

Music Prof To Conduct Orchestra

Theodore K. Karhan, associate professor of music, will be guest conductor for the Central District Orchestra Festival tonight at the new State College High School.

The District Orchestra is made up of 140 students from 19 communities.

The program will open with *Egmont Overture* by Beethoven. Following this, the orchestra will play "Symphony in F Major" by Dittersdorf, "Suite for Strings" by Frackenpohl and "Plink, Plank Plunk" by Anderson.

After the intermission, "Valce Triste" by Sibelius and "Temptation" by Freed-Brown will be played. The program will conclude with "Copa Cabana Samba" by Walters and "Rounaman Rhapsody No. 1" by Enesco.

The orchestra at the State College High School is the only orchestra in Centre County schools. The district festival is the first one to be held in State College.

Other municipalities having representatives in the District Orchestra are Williamsport, Westfield, Mansfield, Kane, Bradford, Clearfield, Elkland, Hollidaysburg, Huntingdon, Jersey Shore, Lock Haven, Lewistown, Morrison Cove, Renovo, Williamsport, Ridgway, Smethport and Wellsboro.

Tickets are on sale for \$1 at the Hetzel Union desk, Keeler's Book Store, the Music Room and the Harmony Shop. Tickets also may be obtained at the door.

Winter Concert To Be Given

The University Symphony Orchestra will present its annual winter concert at 3 p.m. tomorrow in Schwab Auditorium.

Theodore K. Karhan, associate professor of music, will conduct the Orchestra.

The orchestra will open the program with *Overture to "Theodora"* by George Frederick Handel, followed by *Symphony No. 9 in C Major* by Franz Schubert.

Nan Gullo, sophomore in music from State College, will present a harp solo of *Aria in Classic Style for Harp and Strings* by Marcel Grandjany.

The program also will include a *Prelude in E-Flat Minor* by Dimitri Shostakovich and "Fantasia Mexicana" from "El Salon Mexico" by Aaron Copland. The concert is open to the public.

DOC Shift Set By Ag College

The faculty of the College of Agriculture yesterday unanimously approved a motion providing for the acceptance of any student who has completed counseling services and has been recommended by the Division of Counseling.

The student must have carried for at least one semester a program of courses acceptable for his new curriculum.

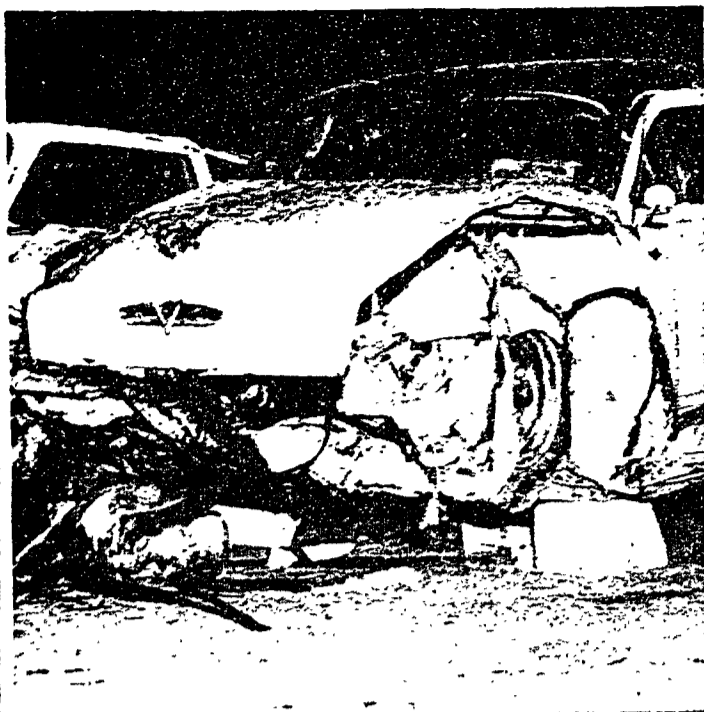
When questioned whether the student accepted would have to have the necessary grades, Dr. David R. McClay, acting associate dean and acting director of resident instruction, said the student would be accepted solely on the recommendation of the division.

He said the faculty would have to trust the division not to recommend a student who did not have the ability for the college.

Noon Classes--

(Continued from page one) what problems, if any, might arise in the future when the noon hour is used extensively.

This will be necessary in the future, said Lawrence E. Dennis, vice president for academic affairs, in order to make fuller use of classroom facilities.



CRUSHED STEEL is all that remains of the front of the automobile in which Jack Welsh, junior in forestry from New Castle, was killed. The driver, James J. Burns, senior in hotel



administration from Altoona was seriously injured. The steering wheel (right) was pushed to only a few inches from the roof of the auto.

Red Aggression in China Affected Chapel Donations

By PAT O'NEILL

Not many students realize that the use of the donations collected at Chapel services on Sunday mornings were affected by the Communists taking over China.

It all started with a "Goff Day" at a chapel service in 1909. G. Weidman Goff was the dean of agriculture at Canton (China) Christian College, which later became Lingnan Uni-

versity. Goff, a graduate of the University, founded the Agricultural College at the Canton, China, university.

On "Goff Day", which was promoted by friends of Goff, the money collected during the chapel service was sent to Lingnan University to help the Agriculture program. Beginning in 1911, all offerings collected in chapel went to support a program officially designated as "Penn State in China." Over the years the contributions totaled more than \$100,000.

The program was carried on without a break through civil disturbances, Japanese bomb attacks and even the conquering of Canton by the Japanese.

Lingnan University moved to Hong Kong, and when that fell, into free China. Finally in the winter of 1953 it became a victim of Communist aggression. The "Penn State in China" program came to a close.

But some remnants of the program still remain on campus. A Penn State in China Room was furnished by students and friends of Goff when Old Main was re-

built in 1930. The room was furnished with gifts from the Chinese students in appreciation of the University program.

The room was disbanded when, due to University expansion, it became an administrative office. Today parts of the tea set are on exhibit in the Penn State Room on the fourth floor of the Pattee Library. The rest of the exhibit is stored in the basement of a women's dormitory.

Today the donations collected during Chapel services are put into the Chapel Building Fund. This fund is for a large all-faith chapel which will be built attached to the Helen Eakin Eisenhower Memorial Chapel as soon as enough money is available.

Coed Hours Extended

All coeds except first-semester freshmen will receive 11 o'clock permissions starting Monday and continuing until the end of finals. First-semester coeds will receive 10 o'clock permissions.

Martin Appoints 4 To UCA Cabinet

Four students have been appointed to the University Christian Association Cabinet by Richard Martin, president.

They are Roderic Zengerl, senior in arts and letters from Bala-Cynwyd, assistant co-chairman of the service commission; Margaret J. Smith, junior in education from Washington, D.C., assistant co-chairman of the residential gatherings commission; Jacob Dentu, sophomore in electrical engineering from Larteh Akwapim, Africa, World University Service representative; and Claris Miller, freshman in education from Sharon, intercollegiate corresponding secretary.

Graduates May Study Linguistics

A 1-year interdisciplinary course for graduate students, Principles of Linguistics, will be offered for the first time during the spring semester.

It consists of Liberal Arts 500, which will be offered during the spring semester, conducted by Dr. Simon Belasco, associate professor of Romance languages, and Dr. Helen Adolf, professor of German; and Liberal Arts 501, scheduled for the fall semester, and taught by Dr. Henry T. Hiz, assistant professor of mathematics, and Dr. Walter Cortu, professor of sociology.

In recent years a much broader consideration of language has evolved due to the expanding interaction of human activity with social and technological problems.

As a result, engineers, sociologists and psychologists alike have concerned themselves with basic research on human speech. This has given rise to definitive techniques for the study of language from several points of view.

Because the interests of the related disciplines seem to be converging, it is becoming traditional in many colleges and universities to offer common courses in linguistics.

The new program was planned with this in mind. It is intended not primarily for language majors, but for students with widely different academic backgrounds.

\$300 Presented to Fund

A grant of \$300 has been received from the Eastern Pennsylvania Pest Control Association to be added to the John Vogel Memorial Fund.

The fund was established by the Pennsylvania Pest Control Operators in memory of John G. Vogel who played an important part in initiation of the Pest Control Short Course.

CLASSIFIEDS

ADS MUST BE IN BY 11:00 a.m. THE PRECEDING DAY
RATES—17 words or less:
\$0.50 One insertion
\$0.75 Two insertions
\$1.00 Three insertions
Additional words 3 for .05 for each day of insertion.

FOR SALE

WEBCOR TAPE recorder, 7 mos. old, 3 speakers, 40 to 12,000 cps. Call AD 7-3727 after 6 p.m.

SMITH-CORONA Portable light-weight typewriter, two years old. Excellent value. Sacrifice—\$20. Phone Jack ext. 3073.

1956 TRAILER, 41-foot, 2-bedroom. Lot 32, Hilltop Trailer Park. Home on weekdays. Cash \$2850 or finance.

CAR FOR Sale—1953 Plymouth Cranbrook 4-door sedan. Good condition, new tires. \$500. Call AD 8-9488.

\$50 FOR Finding buyer for 35-ft. financed house trailer. Six months old. \$2400. No. 15 Franklin Manor Park. AD 7-7483.

1955 34-FOOT 1-bedroom trailer on large lot with beautiful view. Contact Kilpatrick No. 26 Woodsdale Park evenings or call University ext. 2413, 8 a.m. to 5 p.m.

ENCYCLOPEDIA AMERICANA, 70 volume set, latest edition. Sell for half price. Call AD 8-6537 after noon.

1949 CADILLAC sedan. Looks and runs better than many cars several years newer. Must sell to pay tuition. Will accept trade. Call Dennis Crawford ext. 298.

1950 FORD V-8, overdrive, radio, heater. Must sell by 2nd semester. Monroe Snyder AD 7-2826.

1956 35-FOOT 2-bedroom Mobile home, ideal location. Must sacrifice. Phone after 5 p.m. AD 7-7488 or HO 6-6971.

ATTENTION RADIO hams — complete mobile station for sale; sacrifice price. Call H. Levitt, Pollock 5, room 22, ext. 265.

WANTED

WAITERS and dishwashers to work for meals, no breakfast work. Call AD 8-6514.

RIDE TO Norfolk, Virginia or nearby on Jan. 22. Call ext. 735, ask for Joanne.

RIDERS TO Deluth, Minn. via Chicago. Leaving Jan. 19. Call U. ext. 268 ask for Gordie Arnold.

WANTED—Coed working for MRS. degree to study with a senior engineer. Call AD 7-4444, ask for Don.

FOUR WAITERS beginning spring semester. Call or see cook, Lambda Chi Alpha fraternity AD 8-6459.

FOR RENT

3 ROOM cottage six miles East of State College along 322, has current but water available not in the cottage. \$30.00 a month. Call HO 6-6916 or write Bruce W. Sharer, Boalsburg, Pa.

LARGE SINGLE room near campus. Rent reasonable. Call AD 7-6174.

FOR RENT

TWO ROOMS across from Old Main above Campus Restaurant. Reasonable rent. Don. AD 8-9185.

APARTMENT FOR rent, two rooms furnished, private bath, two blocks from campus. Married couple only, no children and no pets. Phone AD 7-2600.

ONE DOUBLE room near campus. Call AD 7-4823 or 515 E. Beaver.

EFFICIENT APARTMENT available. Feb. 1 for married couple, single man or single woman. Furnished—optional. See Al Richards, 228 S. Allen Apt. 3 after 5:30 p.m.

BOY TO share Apt. 1 1/2 blocks from campus. Refrig., bath, private phone and entrance, bath. Reasonable. Also one-half double room, inner-spring mattresses. 230 South Frazier St. Phone AD 7-2965.

RENT THIS two bedroom trailer and apply rent towards buying if desired. No. 16, Franklin Manor Park. AD 7-7483.

TWO DOUBLE rooms for spring semester. Apply 207 East Park Avenue.

DOUBLE ROOM for two — available second semester—3 blocks from campus. \$30 a month. Wash basin in room. Call Jerry at AD 8-6795.

DOUBLE ROOM for two male students near campus. 519 W. College Ave. \$6.00 each. Call AD 7-7212.

DESIRABLE ROOMS near town and campus for second semester. New furnishings. \$7.00 per week. Call AD 7-2788.

PROTECT YOUR car from winter weather. Heated garage space for rent. West Beaver Avenue. \$10.00 per month. Call AD 7-4344.

LOST

LEFT HAND brown leather glove, vicinity of Corner Room or Old Main. Call AD 8-8695.

GOLD WITNAUR wrist watch, in or near White Hall Wednesday afternoon. Finder please contact Han ext. 2750. Reward.

PAIR OF brownish colored glasses, light blue case. Finder call Doreen, ext. 516 or 512.

GERMAN CASTELL sliderule in green case left in HUB Tuesday. Name Alan Renkis on rule. Call ext. 3069.

PAIR BLUE wool gloves trimmed in silver; one in Old Main, one in Sparks. Call ext. 682.

TYPING WANTED

EXPERIENCED TYPIST desires typing of term papers, reports, etc. Fast, reasonable service. Dial AD 8-6943.

MISCELLANEOUS

CONGRATULATIONS to Sue Sherman and Don Zollner on engagement.

EAT YOUR Meals at Ag Hill Dining Hall next semester. Sign up at 207 East Park Avenue.

LOCAL REPAIR Service on all makes of typewriters. We will call for and deliver your typewriter. Nittany Office Equipment AD 8-6125.

HERE'S THE OPPORTUNITY AND THE CHALLENGE OF ASSIGNMENTS IN . . .

GUIDED MISSILE ELECTRONICS

Bendix YORK needs ELECTRONIC ENGINEERS

Mechanical Eng. • Physicists

Here is your chance to prove your ability doing important work on missile fuzing, guidance, packaging and related test equipment. We have the openings that offer you the opportunity to move ahead rapidly in your profession. At Bendix York, you benefit from the advantages of a small company atmosphere in a growing division of one of the nation's largest engineering and manufacturing corporations. Also, you'll enjoy the "good life" in our beautiful suburban community. Good salaries, all employee benefits.

ON-CAMPUS INTERVIEWS
Mon., Tues., Wed.
FEB. 10, 11, 12

Call your Placement Officer for an appointment!

Bendix
AVIATION CORPORATION.
York Division
York, Penna. York 47-2611