

Walls Begun on Men's Dorms; Brethren Fellowship Last Women's Hall Finished To Meet for Dinner

By DENNY MALICK

Foundation work on the new men's residence halls along Park Avenue and Shortlidge Road has been completed and workmen are beginning on the walls and superstructure of the buildings.

The superintendent for John McShain, Inc., general contractor for the project, said the work will continue through the winter barring any unusually cold or stormy weather.

The foundations include concrete caissons, 25 inches in diameter, that are placed in the bedrock. The entire building is anchored to these caissons.

The superintendent said the winter usually is not severe enough to stop construction work. He said the ground would not freeze enough to affect the work.

The superintendent said the final building of the new women's residence halls is finished and is ready to be equipped and occupied.

Workmen at the men's residence halls have been hampered by mud from rain earlier this week. The large equipment has at times been bogged down in the mud and bulldozers were needed to pull them out.

In one excavation where a trench was being dug by a small power shovel, loaded trucks had to be pulled from the mud and up a small grade out of the excavation.

The McShain superintendent said, however, that only minor trouble has been caused by the mud. Most of the large equipment with the exception of trucks remains in one place for several days. The trucks used for dirt hauling and the cement mixing trucks are heavy enough to get traction, the superintendent said.

The new men's dorms architecturally will resemble the women's residence halls. The dorms will be four stories high but will be L-shaped.

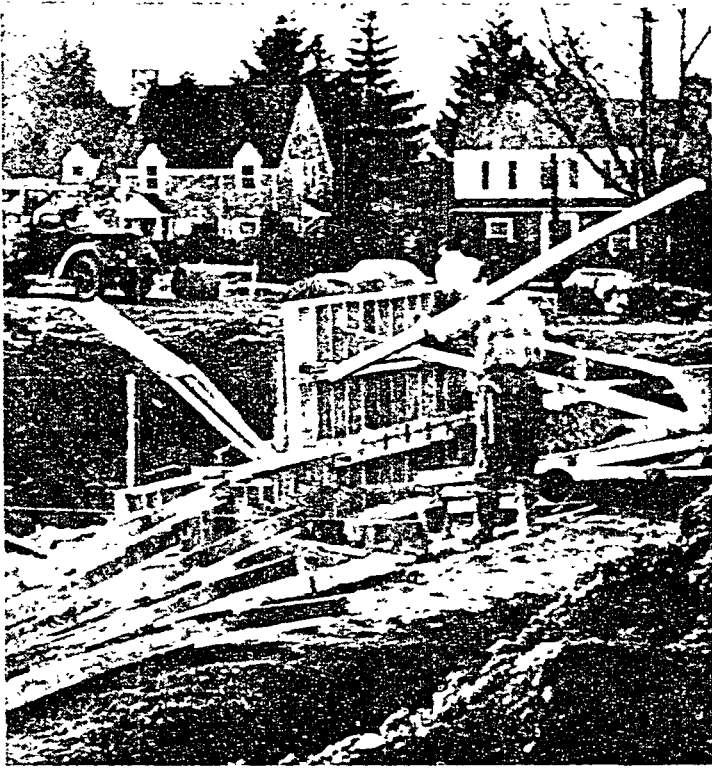
Three of the dorms will be along Park Avenue while the dining hall and the fourth dormitory will be constructed along Shortlidge Road.

A recreation area, 224 feet by 100 feet, will run parallel to Park Avenue next to the dorms. The large area will include four basketball courts, three tennis courts and four handball courts. A special area will be set aside for horseshoe and softball pitching.

Each of the L-shaped buildings will be divided into four living units. Two floors of each of the wings will compose one unit. The University Board of Trustees will assign a separate name to each of the units.

Each of the residence units will include 70 men and will have a residence counselor. The unit will have its own study lounge accessible directly from one floor and by a stairwell from the second floor.

All four units will have access to facilities in the basement of the building. The facilities will include a laundry, trunk storage and game rooms and a kitchenette for parties.



—Daily Collegian Photo by Bob Thompson

FOUNDATION WALLS for the new men's residence halls have been started. Working despite mud from rain earlier this week, work has begun on the walls and super-structure of the L-shaped dorms.



—Daily Collegian Photo by Ron Miller

WORKMEN IN THE NEW WOMEN'S RESIDENCE HALL area are concentrating on the central dining hall. Plastering work is progressing rapidly in the hall, since the last residence hall has been finished.

Group to Study BusAd Courses

In response to student complaints about some accounting courses offered in the College of Business Administration, the college's student council has set up a committee to investigate the accounting curriculum.

Members of the council were told by Chance Gorka, who is also a member of the Accounting Club, that a few of the accounting courses were poorly presented, in the opinion of students. In addition, he charged, these courses require too many work-hours for the credits and tend to overload students.

The committee will include members of the council and the Accounting Club.

The council also voted to offer a limited orientation program to new business administration students coming to campus in the spring semester.

Delta Nu Alpha to Meet

Delta Nu Alpha, professional transportation fraternity, will meet at 7:30 p.m. Monday in 109 Boucke to see movies and discuss sea train operations.

Hu Receives \$3000 In Research Grant

Dr. L. W. Hu, associate professor of engineering mechanics, has received a grant of \$3000 from the DuPont Company.

The grant will be used in extending concepts in plasticity theory to the behavior of high polymers.

Hu has conducted a number of research projects in the fields of plasticity of metals and has published several papers on this subject.

Physics Research Prof Named Institute Member

Dr. Erwin W. Mueller, research professor of physics, has been named scientific member at large of the Fritz-Haber-Institute of the Max-Planck-Gesellschaft, Berlin, Germany.

Before accepting his position at the University, he was a division chief at the Institute.

WDFM Staff to Meet

WDFM staff and candidates will meet at 7:30 p.m. Monday in 316 Sparks.

Prof to Attend Meeting

Ralph H. Wherry, professor of insurance and head of the Department of Commerce, will be the guest of the Pennsylvania Manufacturers' Association at the 62d Congress of American Industry in New York City Dec. 4-6.

The Evangelical United Brethren Student Fellowship will hold a dinner meeting at 5 p.m. tomorrow in the fireside room of the St. John's Evangelical and Reformed Church.

Dr. Arthur H. Reede, professor of economics, will deliver a "Thanksgiving Message."

Richard Martin, president of the University Christian Association, will speak at the fireside forum of Wesley Foundation at 6:15 p.m. tomorrow in St. Paul's Methodist Church student center. He will speak on "Our Church."

Dr. John E. Pixton, assistant professor of history, will discuss "Berlin, City of Conflict" at the Lutheran Student Association meeting at 6:30 p.m. tomorrow in the Grace Lutheran Church center. Refreshments will be served.

The Roger Williams Fellowship will hold a supper at 5:30 p.m. tomorrow in the fellowship room of the University Baptist Church. Following the supper, the group will hear a talk on missions by Isaac Aurelio, graduate student in entomology from Iloilo City in the Philippines.

Aurelio will present the topic from the viewpoint of one who has been helped by the missionaries.

Bill Warren will lead a folk dancing session at 2 p.m. Sunday at the Hillel Foundation. The dance will be open to the public.

Williams To Speak At Chapel

The Rev. Preston N. Williams, assistant University chaplain, will speak on "Our Lord Was a Man" at chapel services at 10:55 a.m. tomorrow in Schwab Auditorium.

The Chapel Choir, directed by Willa C. Taylor, will sing "Lord, Thou Hast Been Our Dwelling Place" by Brahms.

George E. Ceiga, University organist, will play "Laudate Dominum" by Frysinger for the prelude, "Pastorale" by Bach for the offertory and "Now Thank We All Our God" by Karg-Elert for the postlude.

Charles E. Minneman, newly appointed assistant chaplain, will assist in the service.

The Rev. Donald McIlvride, program director of the Westminster Foundation, will speak at Protestant services at 9 a.m. tomorrow in the Helen Eakin Eisenhower Chapel.

His topic will be "A Faith That Doubts." The Meditation Chapel Choir, directed by Willa C. Taylor, will sing the anthem "Rejoice in the Lord Alway" by Purcell. The organist for the service will be Thomas J. Eskew.

The order of worship will be conducted by the new assistant chaplain, Charles E. Minneman.

McIlvride, graduate student in education, received his bachelor of divinity degree from the Union Theological Seminary. He has been a high school teacher. He served previously as an interne at the Westminster Foundation during his seminary training at the University.

Cosmopolitans To See Slides

The Cosmopolitan Club will hold a discussion and show slides on the Middle East at 8 tonight at the Hillel Foundation.

Dr. Frederick R. Matson, director of the social science research center and professor of archaeology, will be the speaker. Dancing and refreshments will follow the illustrated talk.

The club's membership drive opened this week. Dues are \$1. Persons interested in joining or desiring further information may sign at the Hetzel Union desk.

The Cosmopolitan Club is primarily a social club open to all international students, as well as interested American students, faculty and townspeople.

Agronomy Project Awarded Grants

The Department of Agronomy has received grants totaling \$9000 for two research projects involving winter oats and forage grasses.

The larger project, concerning forage grasses, occupies the new Southwestern Field Research Laboratory near Ligonier in Westmoreland county. A group of Pittsburgh citizens interested in agronomy research donated the land for the laboratory.

The second grant, from the State Farm Bureau Cooperative Association, is aimed at obtaining a greater degree of resistance in winter oats to seasonal injuries.

Walker Writes Eng Ed Article

President Eric A. Walker is author of an article, "Research and Engineering Education," published in the November issue of the Journal of Engineering Education.

The article is a copy of an address presented by Walker at a dinner meeting of the Engineering College Administrative Council and the Engineering College Research Council at Cornell University.

The article cites the need to identify persons qualified to profit from professional training, the need to instill into superior students the desire to go to college and the need to make it financially possible for these students to go to college.

Students Asked to Help In Christmas Toy Drive

Students have been asked to collect toys or games during the Thanksgiving vacation for the Kappa Sigma Christmas toy drive.

The fraternity will pick up and repair the toys and deliver them to children's organizations in the area.

DOC Council to Meet

The Division of Counseling Student Council will meet to elect officers at 7:30 p.m. Monday in 214 Hetzel Union.

Electric Companies Present Calculator

The formal presentation of a \$200,000 AC network calculator to the University was made yesterday by the Pennsylvania Electric Association, the Westinghouse Electric Corporation and the Elliot Company.

J. O. Chambers, president of the Pennsylvania Electric Association and vice president for engineering of the West Penn Power Company, presented the \$200,000 check to the University at ceremonies held in the University computer laboratory in the Electrical Engineering Building.

The gift was accepted for the University by Lawrence E. Dennis, vice president for academic affairs, who represented President Eric A. Walker.

The AC network calculator has been in operation since September and is used in undergraduate and graduate electrical engineering courses and by University faculty members engaged in research work. It also serves as a laboratory facility to train undergraduate students in programming problems. The network calculator simulates electric power systems, electrical networks, oil, gas and water pipeline systems and solves many mechanical, engineering and aerodynamics problems.

The calculator accurately and quickly solves complex problems that would be either impossible or extremely laborious to solve by hand. The network calculator is the newest addition to the University's computer facilities, which now represent an investment of about \$600,000. The analog computer was completed in 1954 and the digital computer in 1956.

Dr. Harold I. Tarplay, professor of electrical engineering, is director of the Computer Laboratory. Paul E. Shields, associate professor of electrical engineering is in charge of the facility which was constructed by the Westinghouse Electric Corporation.