



—Daily Collegian Photo by Bob Lloyd  
 'NOW REPEAT AFTER ME'—Ann Bickel, sophomore in advertising from Lebanon, proves the point by wearing a customs violator's sign for joint reverse customs yesterday. Small sign on umbrella reads, "Beware of low-leaping Kangaroos."

### Elections Committee To Hold Interviews

Students who applied for positions on All-University Elections Committee will be interviewed by the Cabinet Personnel Interviewing Committee Tuesday, Wednesday and Thursday in the Hetzel Union Building.

Applicants will be mailed cards telling them the time and place for the interview. Chairman Peter Fishburn said 20 students will be recommended from the interviews. Final approval for committee membership must come from All-University Cabinet.

### HECLA PARK

13 miles east of State College, route 64  
 presents

### TOMMY TUCKER and his orchestra

**SATURDAY, SEPTEMBER 28**

Dancing 9 p.m. to 1 a.m.  
 ADMISSION \$2 (tax included)  
 For Table Reservations  
 Phone Zion 1-2121

## Over 14,000 Readers See These . . . CLASSIFIEDS

<p><b>FOR SALE</b></p> <p>COMPLETE LIBRARY of popular music for combo or small dance band; also 4 music stands. Call EL 5-4234.</p> <p>MATCHED SET Louisville golf clubs: four woods, light irons, wedge, putter, summer bag included. Also size 10½ shoes. Call AD 7-4189.</p> <p>TWO TICKETS on 50-yd. line for Penn-Penn State game. Dan Keiner AD 7-4934.</p> <p>SINGLE DRAWER letter size file cabinet, 16 inches deep. New two volume Funk and Wagnals Unabridged Dictionary. Call AD 5-6858.</p> <p>RCA 45 r.p.m. Phonograph automatic. Reasonable price. Call AD 8-8441 ext. 3153.</p> <p>COMFORTABLE '56 model 35-ft. Trailer set-up, excellent condition. See Bill Eckel, Park Forest Trailer Court.</p> <p>1956 CHEVROLET 210 4-door: R&amp;H, powerglide, 28,000 miles, perfect condition. Inherited excellent 1952 Chevrolet Tudor Styline. Must sacrifice one. Call University ext. 678.</p>	<p><b>WANTED</b></p> <p>WANTED — all kinds of typing. Experienced. Call AD 8-6950 or inquire at 133 S. Gill.</p> <p><b>HELP WANTED</b></p> <p>HELP WANTED: One waiter at Kappa Sigma, 300 E. Beaver. Phone AD 7-2044.</p> <p>DISHWASHERS WANTED at Alpha Epsilon Pi. Please call Marty Freedman at AD 7-2941.</p> <p>WANTED—MAN to work in kitchen at Pi Lambda Phi. Call Bill Adams AD 8-9185.</p> <p>STUDENTS EARN up to \$1.50 per hour working 2 or 3 evenings of your choice on steady part-time basis. Inquire Dux Club, 128 S. Pugh St.</p>
<p><b>ROOMS FOR RENT</b></p> <p>ONE-HALF DOUBLE Room. Private bath, large and quiet. Reasonable. Private phone. 244 S. Barnard St. Phone AD 7-7826.</p>	<p><b>LOST</b></p> <p>BURBERRY RAINCOAT lost Monday 11 a.m. in Boucke 2nd floor. Call Merrill AD 7-4934 if found.</p> <p>LOST—Small Sigma Phi Epsilon fraternity pin, heart surrounded with pearls, between McElwain and South Alberton St. Reward offered. AD 8-0715.</p>
<p><b>FOR RENT</b></p> <p>PARKING SPACE for rent three blocks from campus. 220 E. Foster, AD 7-4232.</p> <p>PARKING SPACE available, 450 W. Beaver Ave. \$4 monthly. Phone AD 7-3126.</p>	<p><b>PASSENGERS WANTED</b></p> <p>PASSENGERS WANTED to New York Oct. 11. Call Dave AD 8-6318.</p> <p>RIDERS to Williamsport, Canton vicinity. Leaving Sat. Sept. 28 noon—return Sun. p.m. Write Box 478, State College. Give phone number.</p>
<p><b>WANTED</b></p> <p>WANTED: 6'3" GOOD Looking Junior in social fraternity for party going Friday and Saturday night, by glamorous blonde. Call S.S. (Sensational Sonja) ext. 1422J.</p>	<p><b>MISCELLANEOUS</b></p> <p>LOCAL REPAIR Service on all makes of typewriters. We will call for and deliver your typewriter. Nittany Office Equipment, AD 8-6126.</p> <p>FRESH PRESSED CIDER. Truck will be at Werner's Freezer Fresh Saturday evenings, Sunday afternoons and evenings. Please bring jars.</p>

## Thespians Name Crew For Show

Crew members and managers for the Thespian revue, to be presented Homecoming Weekend, have been announced by Director Stuart Kahan.

**Construction:** Charles Warren, manager; John Wilson, Michael Schofield, Thomas Fitzpatrick, David George, Bonnie Keys, Judith McFarland, Phyllis Porterfield, Amelia Hopson and Jane Carson.

**Lights:** William Delaney, manager; Kenneth Kuhn, Irving Klein, Dean Eayre, John Behne, Edwin Adelman and Howard Cliff.

**Program:** Maxwell Schultz, manager; Lewis Gold, Diane Morrocco and Barbara Marcus.

**Advertising:** Arthur Cooper, manager; Thomas Buckley, Thomas Kloess, Marianne Moldovan, Rachel Friedman, Sandra Guskay, Janet Sloves, Myra Radel and Michael Maxwell.

**Costumes:** Nancy Kauchack, manager; Hannah Yashan, Susanne Stover, Rosabelle Kitzmiller, Helen Jones, Ann Harleigh, Alice Mahachack, Janet Paluck and Arlene Quinone.

**Properties:** Alice Shapiro and Gloria Litz, managers; Thomas Burns, Rachel Milligan, Joan Schmidt, Leonard Phillips, Myla Johnson, Suzanne Ittel, Gloria Gibson, Mary Ann First, Ann Bowman and Maxine Gratt.

**Stage:** Thomas Fitzpatrick, manager; Richard Watson, John Hayworth, Albert Mowery, George Bergdoll, Brenda Kloforn, William Bastian, James Moore, Thomas Burkas and Raymond Fireman.

**Makeup:** Jo Proudfoot, manager; Marilyn Cohen, Beatrice Greenfield, Gertrude Kill, Florence Moran, Anny Ries, Patricia Pyott, Andrea Katcher, Gladys Eroh and Mary Weber.

**House:** David West, Nancy Adams, Nancy Kress, Jody Miller, Sue Markley, Bonnie Keys, Barbara Martino, Carol Ehaman, Barbara Wagner, Virginia Ottinger, Judith Bowers, Marianne Moldovan, Jayne Berk, Barbara Ryan, Lucy Capella, Pamela Alexander, Bonnie Antrim, Susan Chapman, Susan Sunderland, Sarah Finch, Joyce Levenson, Carmella La Spada, Marilyn Roberts, Claire Van Deusen and Sandra Berrell.

Homecoming Queen: Anthony Potts.

## Pep Rally--

(Continued from page one)  
 and become familiar with the Penn State songs and cheers.

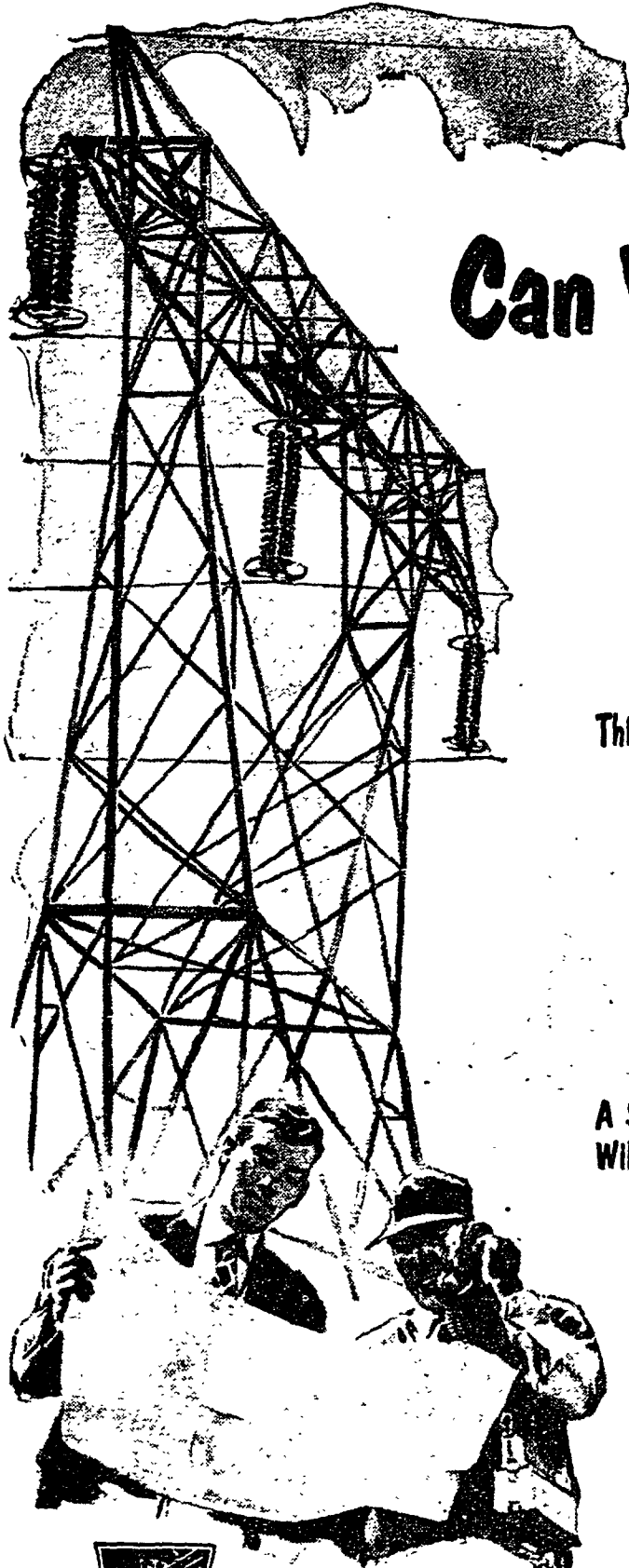
For the rallies held prior to home games, the Blue Band will perform while the Air Force ROTC band will play for the Thursday night rallies.

Post-game rallies for away contests won by the Nittany gridders will also be held. These will be planned by the cheerleaders remaining on campus and will be held when the team arrives home from its trip, Collier said.

The usual pre-game rally will include short talks by players, coaches and physical education personnel, and skits, musical selections, cheers and songs. The antics of the Nittany Lion and Frothy will also be seen during the rallies. This week's Lion will be Jack Behler, a third semester psychology major from Bethlehem.

Due to a lack of parking facilities behind Old Main, students have been asked to make these "walk-to" pep rallies. Pep rallies will begin at 7:30 p.m.

There is only one matinee in Russian theaters—on Sundays. It is the only day of the week that isn't a work day.



## Can You Qualify?

The tremendous growth of our population and of our industries has placed an ever increasing demand on the electric power industry for more power, in more places, for more purposes.

Pennsylvania's Utility Companies are well aware of their responsibility to supply the vast amounts of electric power America needs so desperately. That's why they are constantly looking for graduate engineers with the qualifications to do this tremendous job.

### This Can Be Your Future

If you can qualify as an engineer for a Pennsylvania Electric Utility Company, you'll be a respected, well paid, and an influential member of an organization that *must* double its output in 10 years.

And you'll be a member of an organization representing an advanced field of research science, dealing with such complex problems as atomic forces, electronics and automation in virtually every form.

### A Select Group of Engineers Will Be Chosen . . .

by the Pennsylvania Electric Utilities Companies to play a dominating role in one of the greatest expansion programs the industry has ever seen. If you are interested, and feel you have the qualifications, get the facts on Pennsylvania's Electric Companies from your placement counselor. Have him make an appointment for you to see the representatives of the Electric Companies when they visit your campus.

**Pennsylvania Electric Association**  
 24 INDEPENDENT COMPANIES PROVIDING POWER FOR PENNSYLVANIA'S PROGRESS