



## Flu Hits 3 States; Rumors Denied On Campus Cases

Thousands of cases of what is believed to be Asiatic flu were reported yesterday in New York, Mississippi and Texas, but the disease so far apparently has by-passed the University community, despite rumors to the contrary.

The Associated Press last night quoted board of health reports showing 24,000 cases in Mississippi, with outbreaks reaching epidemic stages in 12 counties.

Five schools have been closed by a flu epidemic in Hastings, N.Y., and 90 pupils in Niagara Falls, N.Y., were reported stricken. Epidemics were reported in parts of Texas.

Dr. Herbert R. Glenn, director of the University Health Service, yesterday said no flu cases have been diagnosed at the University hospital and no patients are suspected of having the flu.

**Rumors Cite 'Case'**  
A number of rumors circulated on campus yesterday claimed the University had reported its first case of Asiatic flu.

Glenn also said there have been no reports of serious reactions to the 636 Asiatic flu vaccinations administered Monday and Tuesday.

Although productions of the flu vaccine has fallen behind the initial goal, according to the Associated Press, the U.S. Public Health Service estimates 85 million doses will be produced by Dec. 31.

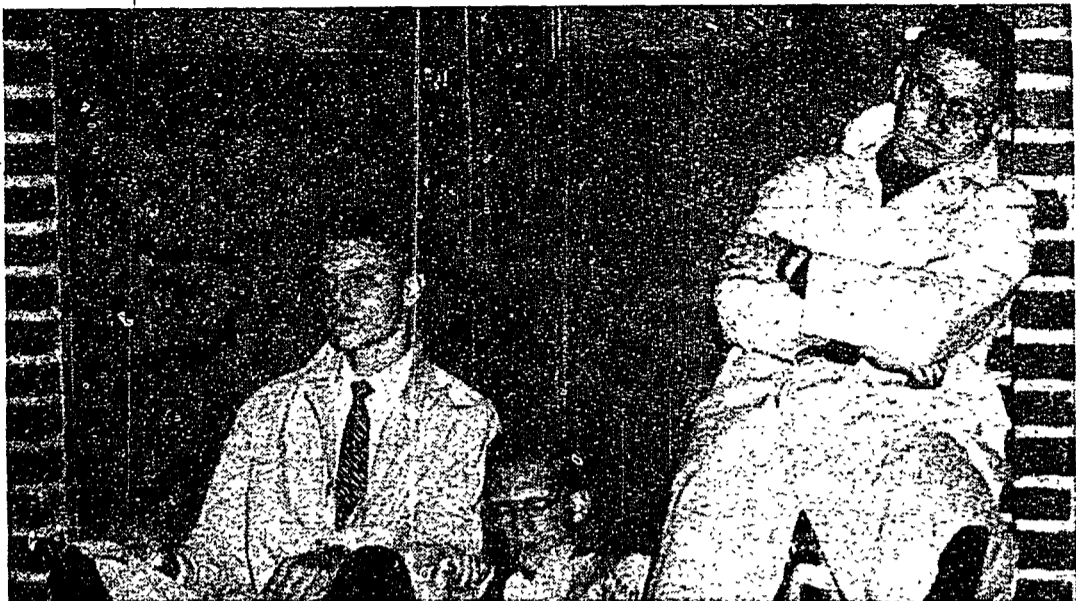
The University has ordered 75,000 doses, most of which are expected to arrive within 10 days. The Health Service was forced to turn away crowds of students seeking the shots after the supply ran out Tuesday morning.

The Public Health Service yesterday estimated there are about 65,000 cases of Asiatic flu across the country. This represented an increase of 15,000 since its previous estimate on Sept. 12.

**Expect New Figures**  
New figures will be made public Friday. A spokesman said these will doubtless be higher in view of reports now being received of flu outbreaks in states from New York to Texas.

School-age children appeared hit hardest by the new outbreaks. Other states reporting significant outbreaks in some communities included Florida, Missouri, Pennsylvania, West Virginia and Oklahoma.

The Public Health Service spokesman said the number of cases so far reported was still in the range of anticipated sporadic outbreaks. He said they did not constitute a nationwide epidemic.



'T'WAS A LONG NIGHT in the ticket line at Rec Hall, but these pledges were first to get their Penn-Penn State football tickets when the office opened at 8 a.m. yesterday. George Felton, sophomore in general agriculture from Darling, and Gilbert Sergeant, sophomore in

psychology from Sodus, N.Y., were in the line at 7:30 p.m. Jack Behler, sophomore in psychology from Bethlehem, arrived a short time later. Other fraternity pledges joined the line as the night progressed. About one-third of the tickets were sold yesterday.

## Sorority Rushing Will Begin With Open House Monday

Informal sorority rushing will begin Monday, instead of Sept. 28, as originally scheduled.

Panhellenic Council has voted the change because an away football game at Pennsylvania University is scheduled for Sept. 28.

Open houses will be held from 6:30 to 8 p.m. Monday and Tuesday. The dress will be informal socks, skirts and sweaters.

Rushes need not have an invitation to visit a sorority.

A meeting for coeds interested in sororities will be held at 8 p.m. Monday in 121 Sparks. Grace Antes, president of Panhel; Barbara Rilling, Panhel rush chairman; Pearl O. Weston, dean of women; and Mrs. R. Mae Schultz, assistant dean of women, will explain sororities to the coeds.

**Average Requirement**  
Second semester freshmen with a 2.3 all-University average and upperclasswomen with a 2.0 all-University average are eligible to rush.

Registration for rushing will be held from 8 a.m. to 5 p.m. each day from Sept. 30 to Oct. 3 at 105 Old Main. There will be a \$1 fee for registration.

Invitations from a sorority to a rushee will be issued from Oct. 7 through Nov. 1. The invitations will be delivered by the sororities.

Rushing will be held from 1:30 to 5 p.m. and 6:30 to 8 p.m. Mondays through Thursdays, and from 1:30 to 5 p.m. on Fridays.

Replies to invitations by rushees will come to 105 Old Main to be distributed to sororities at 1:30 and 4:30 p.m. each day. The rushee must return her invitation by noon following the day she receives it.

**Bids to Be Sent**  
Bids may not be sent out before 8 a.m. Oct. 16. Bids may be given a rushee after she has been to a sorority three times, not including open houses.

A rushee must return her answer to a bid to the dean of women's office, 105 Old Main, within three days of receiving it. Following the issuing of a bid, a strict silence period will be observed.

## Peanuts Makes Debut Tuesday

You can laugh at the antics of Charlie Brown and his friends every morning beginning next week when The Daily Collegian starts carrying the pint-sized Peanuts strip.

The new Collegian feature, designed for intellectual college students and professors living in ivory towers, will join Prof. Snarf and Worthal daily in this newspaper.

## 315 Concert Tickets Remain For Steber Performance

Approximately 315 tickets remain for the Eleanor Steber concert, the first of the newly-established Artists' Series, to be held at 8:30 p.m. Sunday in Schwab Auditorium.

Nine hundred student tickets were issued from noon on Tuesday until noon yesterday, when they were made available to non-students at \$1.75 per ticket. Non-student tickets will be sold at the Hetzel Union desk until 4:45 p.m. today.

Tickets left will be issued to students from 9 a.m. to 4:45 p.m. tomorrow. None of the tickets is transferable and tickets sold to non-students will be different from those issued to students.

Since the series is sponsored by a student fee of \$2 per semester, students have had first chance to obtain tickets for the program. Graduate students who have paid the full fees of \$175 per semester also have priority, and should present fee receipts at the time of picking up the tickets.

Undergraduate students will need the stub with the film number which they were issued at registration or their matriculation card.

## Ewing Hall to Open This Weekend

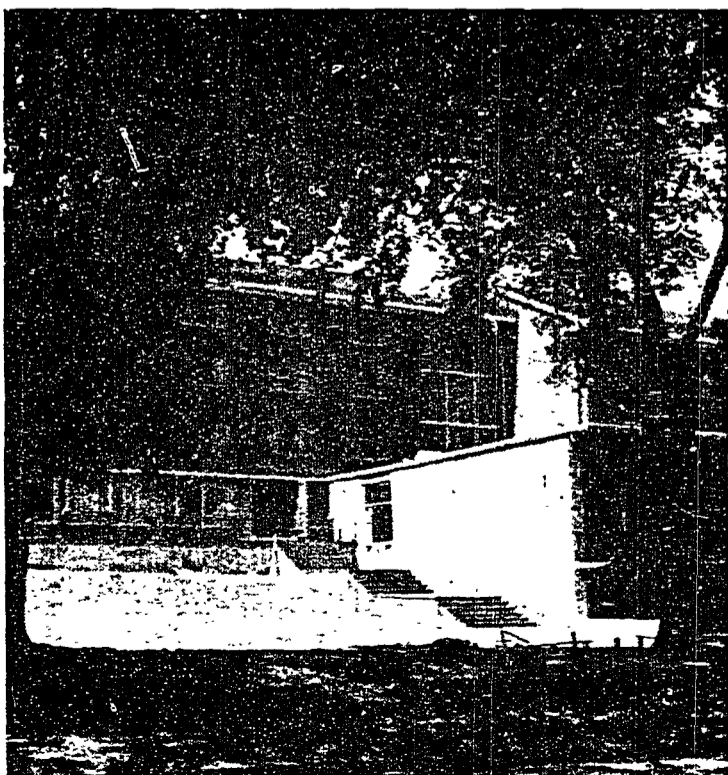
Crowded residence hall conditions will be eased this weekend—at least for women students—with the opening of Ewing Hall, another of the new women's dorms.

Otto E. Mueller, director of housing, said women will begin on Saturday moving into the new hall which is located directly east of Haller-Lyons building.

Mueller said he expects the housing problem to be settled within 10 days. Many of the girls have moved into permanent rooms and others have received notice of the rooms they will occupy.

The accommodations for men also have eased. Mueller said 61 male students do not have permanent housing, while 37 vacancies exist. The vacancies will be filled as soon as students are contacted. Most of the male students are living in study lounges in Hamilton and McKee Halls.

Mueller said the University overloads the dorms because of the large number of students who drop out of school between the beginning of the semester and Christmas. Some students are housed in dorm lounges and in the infirmary.



CROWDED COEDS will find welcomed relief this weekend when this newest residence hall opens.

## Registration Open For 'Ugly Man'

Fraternities and independent groups may register for the Ugly Man Contest until Oct. 7 at the Hetzel Union desk.

The contest, sponsored by Alpha Phi Omega, men's national service fraternity, will be held Oct. 22, 23, 24 and 25.

In the past the contest was held in the spring, but it has been moved to the fall to avoid congestion of the spring semester calendar.

Registration at a fee of \$2.50, is open to male students of a fraternity or independent organization. Only one representative from each group will be accepted.

**Donate Proceeds**  
Previously proceeds of the contests have been donated to the Beaver Dam Recreation Area, the Penn State Scholarship Fund and Campus Chest. APhiO has not determined the recipient of this year's proceeds.

Ugly Man contestants will be photographed in their contest costumes from 1 to 10 p.m. Oct. 9 and 10 at the Storch Plymouth-DeSoto Co., West College Ave.

The Ugly Man parade, to be held Oct. 22, will be judged on five points; presentation of theme, group participation, originality, organization and whether or not the presentation is in good taste.

Parade points, equal to money, will be given for the first five places in both divisions, fraternities and independent groups.

**Campaigns to Continue**  
Individual campaigning may be held on the Mall from noon to 1 p.m. and from 5 to 5:30 p.m. on the days of the contest. Each penny donated for the contestants at the voting booth on the Mall will count as one vote.

The finalists will be the five fraternities and the five independent groups collecting the largest parade and money votes. Skits will be presented by the ten finalists to determine the Ugly Man and the first and second-place winners in both divisions.

An Ugly Man key will be given to the winner and a 32-inch trophy to his sponsoring organization. The first place winners in both divisions will receive 16-inch trophies and the second place winners, engraved plaques.

## Lion Predicts Damp Weather

The Nittany Lion crawled out of his damp den this morning and threw off his khaki raincoat.

"Ah, it feels good to be an individual again," he sighed as he looked up at the fairly clear sky.

However, during the later part of the morning he noticed clouds gathering and once more donned his coat. "Oh well," he mused, "if you don't like the weather at Penn State . . . wait a minute."

There will be increasing cloudiness this morning with a chance of rain sometime in the afternoon. The high will be between 75-78 degrees.

