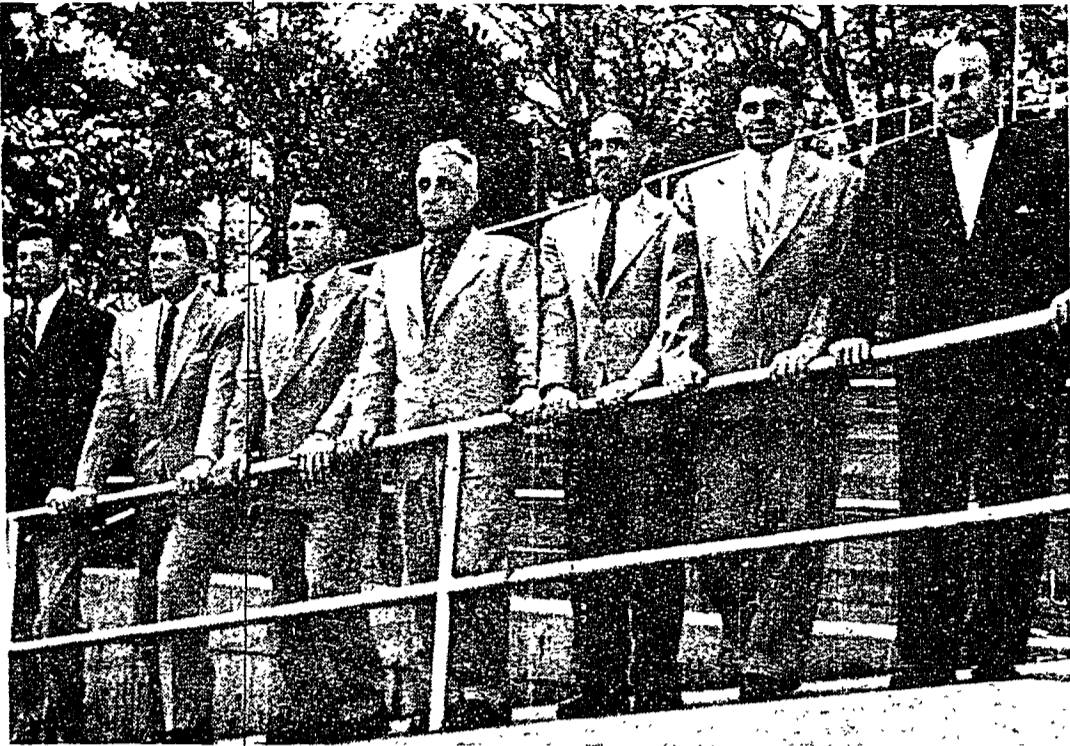


# Meet the Mentors



THE PENN STATE GRID COACHES . . . Pictured above are head coach Rip Engle and his staff of assistants. From left to right they are: end coach J. T. White, guard and center coach

Sever Toretta, backfield coach Frank Patrick, Engle, tackle coach Jim O'Hara, backfield coach Joe Paterno, and freshman coach Earl Bruce.

Although "Rip" Engle serves as head football coach of the Nittany Lions, few people outside the football circle stop to realize that the mentor is backed by a staff of six efficient assistants who are specialists in certain areas of the grid game.

Jim O'Hara, a Penn State alumnus, joined the Lion grid staff in 1946 after serving coaching stints at Roaring Springs and Mahanoy Township high schools. O'Hara concentrates mainly on the tackles, which, incidentally, offer the greatest worry to Engle's outlook for the 1957 season. Handling the freshman teams for the past few years has been a 1929 graduate of Washington & Jefferson University, Earl Bruce. Bruce was the first non-alumnus to join the grid staff in many years.

The second Penn State graduate to return to his alma mater was Sever Toretta in 1949. Toretta

coached at Brockway, Steelton and Williamsport high schools before moving to his present position.

Also joining the Nittany grid staff in 1949 was Frank Patrick, a University of Pittsburgh graduate. Patrick played football under Jock Sutherland and played professional ball with the Chicago Cardinals. He served on the coaching staff of three other college teams and the professional Pittsburgh Steelers before coming to Mt. Nittany.

Engle's number one quarterback at Brown University in 1948 and 1949, Joe Paterno, entered the Lion coaching ranks in 1950 after his graduation from Brown. He helped install the wing-T formation at Penn State.

J. T. White, a Big Ten assistant coach at Michigan for several years, is the latest addition to the Lion coaching staff. White came to Penn State in 1954 and has served as

end coach since.

Engle, a native of Salisbury, Pa., was graduated from Western Maryland College in 1929 where he lettered in football, basketball, baseball and tennis. From college he moved to the coaching job at Waynesboro high school where he posted an 86-17-5 record in 11 seasons.

Engle then joined the staff at Brown University in 1942 as assistant mentor and moved up to the head coaching job in 1944. His six-year record at Brown was 38-20-1. In 1950 Engle succeeded Joe Bedenk as head coach at Penn State.

Coaching post-season games is not a new business for Engle. He served as Blue head coach for the Blue-Gray game for three years and served as a member of the staff in 1954. In 1955 he joined the East staff for the East-West Shrine game, returning again in 1956. He will be head coach for the East squad this year.

# WRA Puts Emphasis Solely on Recreation

Why doesn't Penn State have an intercollegiate sports program for women? The answer to this is that Penn State is a member college of the Pennsylvania Division of the Athletic Federation of College Women and adheres to its constitution which encourages recreation rather than competition.

To take the place of intercollegiate sports, the Women's Recreation Association, better known as the WRA, holds various Play Days with other colleges from central Pennsylvania throughout the year.

The colleges that participate in these Play Days are Bucknell University, Wilson College, Lock Haven State Teachers College, Dickinson College, Juniata College and Penn State. Emphasis in these Play Days is placed on participation rather than on winning.

The officials are members of the WRA Officials Club which meets 7 p.m. every Thursday in White Building. These members are trained by physical education instructors to officiate all women's sports events.

The following sports events will be held this year:

**Oct. 19—Hockey Play Day.** At least four colleges, including Penn State are expected to participate. It will be an all-day affair to take place on the WRA hockey field.

**Oct. 26—All-College Hockey Sports Day.** This tournament will be held at Bucknell University. It will be the same type program as that to be held here the previous week.

**Nov. 9—Central Pennsylvania Field Hockey Tournament.** This tournament will be held at Wilson College. Players from Penn State attending this contest are chosen from the Hockey Club by the physical education instructors on a rating system.

At this tournament an all-star team will be chosen which will represent central Pennsylvania in the Mideast Hockey Tournament.

**Nov. 16—Mideast Hockey Tournament.** The all-star team which wins the hockey tournament at Wilson College will play teams from the East at Batavia, Pa. The winning all-star team will represent the East in the United States Hockey Tournament.

**Dec. 14—National Telegraphic Bowling Tournament.** Students will bowl at their own college. Each college entering this contest will telegraph the scores to the national headquarters. There will be individual and team participation.

**Feb. 10—Individual Badminton Tourney.**

This tournament will be for Penn State women only. Each girl who participates will not represent any dorm or sorority but will enter as an individual.

**March 1—Basketball Play Day.** This day will be very similar

to WRA's Hockey Play Day in which several colleges from central Pennsylvania will participate in basketball games. Penn State will be the hostess.

**April 28—Individual Tennis, Golf, and Bowling Tournaments.** This will be operated the same as the Individual Badminton Tourney.

**May 3—Lock Haven Spring Sports Day.** Held at Lock Haven State Teacher's College, softball games will be played among the colleges of the area.

# Steelers Gain Quarterback In Major Deal

PITTSBURGH, Sept. 16 (AP)—The Pittsburgh Steelers today had a new candidate for the quarterback slot which Coach Buddy Parker says must be reinforced to get the team rolling on victory road.

Parker, in a major deal with the San Francisco 49ers, grabbed Earl Morrall, an NFL sophomore who was a college star at Michigan State.

To get Morrall and guard Mike Sandusky, Parker gave up rugged linebacker Marv Matuszak, a Steeler defensive star, and the Pittsburgh club's first choice in each of the next two NFL draft meetings.

The trade was announced only a few hours after Parker announced a wholesale house-cleaning which released six Pittsburgh players, including quarterback Jack Scarbath, former Maryland University star.

# Mat Manager Candidates

Sophomore students interested in becoming wrestling managers are requested to sign their names immediately in the Athletic Office, second floor, of Recreation Hall.



"I heard about your wonderful service, but . . . ahem . . .!"

For those who know  
Good food, and  
love it  
We serve it right  
And plenty of it.



# Mays Gains in NL Bat Race

NEW YORK, Sept. 16 (AP)—Willie Mays of the New York Giants has moved to within three points of Stan Musial in the exciting National League batting race.

With Ted Williams' return to the Boston line-up indefinite, the NL competition has taken the play away from the American League derby in which Mickey Mantle will have to make up a seven-point deficit with two weeks remaining in the regular season.

Here's the way the contenders stood with none among them scheduled to play Monday:

Musial, Cards—477 ABs, 163

hits, .342 pct.

Mays, Giants—522 ABs, 187 hits, .339 pct.

Williams, Red Sox—402 ABs, 151 hits, .376 pct.

Mantle, Yankees—451 ABs, 170 hits, .369 pct.

Mays, a strong finisher, gained five points in last week's games with nine hits in 19 tries. Musial returned to action Sunday after resting shoulder injury. The St. Louis star had three hits in six trips in the doubleheader against Pittsburgh.

Musial will have to at least hold his ground if he's to win his seventh championship. For, on

past performances, Mays is a tough man to keep down in the final two weeks.

In the last two weeks of 1954, Willie had 18 hits in 44 times at bat for a .409 average. This spurt enabled him to beat out teammate Don Mueller and Brooklyn's Duke Snider to capture the title with a .345 mark.

**WATCH FOR GRAND OPENING of another "Spot"**




**THE TASTY SPOT**  
Soon to open across from Atherton Hall

featuring

Pastries	Dairy Products
Ready-made sandwiches	Soft Drinks


**THE TASTY SPOT**  
Partially open for business now

**GENUINE SHELL CORDOVANS**



Made expressly for us in a variety of quiet, conservative styles correct for all occasions.  
Plain toe classics in black and ebony  
Moccasin versions in slip-ons and lace oxfords

—Bostonian Ltd.—



108 W. COLLEGE AVE., STATE COLLEGE