

# Young Friends to Work With Rockview Inmates

By DICK DRAYNE

The inmates of Rockview Penitentiary will have a taste of collegiate atmosphere on weekends this year.

The college flavor will be provided by the Young Friends, a Quaker organization on campus, who will work with the prisoners for education and recreation.

Beginning today, the Quaker group will conduct a series of weekly music symposiums at the penitentiary. The symposiums will be held from 3:30 to 4:30 p.m. Saturdays.

The symposiums are part of an educational program begun in 1955 at the prison by the Young Friends. A discussion series on comparative religions was held. The series was followed with a music topic during the spring semester of last year. The symposiums were discontinued last semester and the idea recently revived.

### Conducted Informally

The symposiums will be conducted informally and will include both students and prisoners. Discussions, rather than lectures, will be led by individual students.

David Schleicher, member of Young Friends who is handling arrangements for the series, said the sessions will include the playing and discussion of music. All types of music, ranging from classical and opera to jazz, will be treated.

Schleicher pointed out that al-

though the students are technically doing the teaching, they can learn much from the inmates. He said that prisoners frequently know more about music than many of the students.

### Open to Male Students

The symposiums are open to all male students. Schleicher said that although only a small number have signed to participate in the series, the program usually proves so interesting that both student and prisoner attendance increases.

Interested students may contact Schleicher at Ext. 1172. Students need no previous musical training and do not have to take an active part in the symposiums, Schleicher said.

### Cabinet—

(Continued from page one) Leonard Richards, All-University secretary-treasurer, said he was not sure whether Cabinet would lend \$75 to each of the two arriving students.

# Spirits, Fantasy Highlighted In 'The Enchanted'

The spirits of the "other world", and elements of the supernatural present a sense of unreality and fantasy in "The Enchanted," by Jean Giraudoux, which will be presented at 8 tonight at Center Stage.

The play, which began a two-weekend run last night, is the thesis production of Ruth Yeaton, graduate student in theatre arts from State College.

The "Enchanted" is the story of an attractive young school mistress, Isabel, whose belief in the life of the spirits is so real that she keeps a nightly rendezvous with a "ghost" to whom she gives her heart.

Members of the cast are Nancy Wilder, Isabel; Jon Wilder, the Inspector; Bruce Taylor, the Ghost; Charles Antalosky, the Mayor; Ronald Weitz, the Doctor; and David Thompson, the Supervisor.

Others are Patricia Miller, Armande Mangebois; Elizabeth Ives, Leonide Manegbois; James Jimirro, 1st Executioner; Sidney Bowhill, 2nd Executioner; Theodore Pauloski, Monsieur Adrian; Delmar Hendricks, Papa Tellier, and Margie McGarey, Mary Ann Coombs, Sherry Gentry and Ruth Panofsky as the Little Girls.

Tickets for "The Enchanted" are available in the Greenroom of Schwab Auditorium.

# 'Talk-a-thons'--

(Continued from page two) Telephone Co., which services all facilities.

The University operators are mostly students' wives. Most operators have had previous Bell Telephone service or experience on a switchboard similar to the University's.

Miss Shirk is a veteran of 12½ years service in Stroudsburg and Bellefonte with the Bell Co. prior to becoming chief operator in October, 1937. She is a native of State College.

# Elevator--

(Continued from page one) she climbed up, and tried to loosen the bolts.

About 30 minutes later, a patrolman arrived and unlocked the hall door three feet above the elevator. The trim, dark-haired coed twisted away at the trapdoor bolts, and finally was able to push the door open.

Standing on a wooden box handed down from above, Miss Sabatine pulled herself out of the elevator and up to safety.

Her only complaint later was—"It certainly was hot in there."

# Hypnotic Eyes--

(Continued from page one) with the Most Hypnotic Eyes." Each finalist will receive a trophy.

Tickets for the show will be on sale at the door. Reserved seats are \$1.50, and regular admission is \$1.

# Discount Plan--

(Continued from page one) "Many students would favor and support a student boycott if the State College merchants continue to see the students as something created for their profit instead of the true situation—the fact that State College owes its existence to the students."

"I try to spend as little money as possible in State College due to the high prices. I know that I would buy everything in town if the prices were lower."

"I think that the stores in State College could reduce their prices for there are enough students buying necessities that would take up the slack during the summer and the merchants could still live profitably."

"This is a good idea and I certainly hope that it can be worked out. Too many of the stores know that we have to have the items and that we will have to pay to get them."

# CLASSIFIEDS

ADS MUST BE IN BY 11:00 a.m. THE PRECEDING DAY  
 RATES—17 words or less:  
 \$6.50 One insertion  
 \$9.75 Two insertions  
 \$1.00 Three insertions  
 Additional words .3 for .85 for each day of insertion.

### FOR SALE

COMPLETE FISHER Amel dual carburetor kit with instructions for Volkswagen—\$75. Myers Zimmerman, 313 Susquehanna Ave., Lock Haven.

GIRL'S GYM Suit, size 12—\$3. Call AD 8-6126 evenings.

AUSTIN-HEALEY, 1954, 18,500 miles, excellent condition, never raced; radio, heater—\$1600. AD 7-7130 after 5 Friday, all day Saturday.

GIGANTIC SALE: this Thurs., Fri. and Sat. Terrific reductions on every Radio, Phone and TV in the store. Free 12.95 swivel lamp with every clock radio. TV runs ½ price. State College TV, 232 S. Allen St.

COMPLETE DRAWING Set \$24. Two dissecting kits \$4, \$3.50. Phone Gerald Bean AD 8-6814.

### FOR RENT

ONE DOUBLE room for rent near the campus. 515 E. Beaver Ave. Call AD 7-4823.

HALF OF large double room. Male student, private home, parking place. Phone AD 7-2039.

ROOMS WITH board for three students, two blocks from campus. 243 S. Pugh St.

SINGLE AND double room for spring semester. Contact AD 7-2156 or 8-8547 after 6 p.m.

NICE FIRST Floor room adjoining bath, can be occupied as single or double; reasonable rent. AD 8-9609 or AD 7-4566, 409 S. Atherton.

HEATED GARAGE at Beaver Ave. and Atherton St. \$10 a month. Call AD 7-4344.

COMFORTABLE SINGLE room two blocks from campus—\$6 per week. Phone AD 7-2635 after 7 p.m.

GRADUATE STUDENTS, upperclassmen will find comfortable rooms with hot and cold running water or private bath. The Colonial, 123 W. Nittany Ave. Central location, quietly operated for rest and study. Low student rates. Phone AD 7-4850 or AD 7-7792 ask for C.R.

TWO SINGLE rooms \$6 per week. Available immediately. Call Hamilton Rooming House AD 8-9195.

SINGLE ROOM, third floor, two blocks from campus at 217 E. Foster Ave. \$7 per week. Call AD 7-3498.

GRADUATE STUDENTS, Upperclassmen will find comfortable rooms with hot and cold running water or private bath. The Colonial, 123 W. Nittany Ave. Central location, quietly operated for rest and study. Phone AD 7-4850 or AD 7-7792, ask for C.R.

HALF OF attractive pine-paneled room. Private entrance, semi-private bath, twin beds. 242 Nimitz Ave. AD 7-3309.

TIRED OF Hiking? Need quiet? Desirable rooms 1½ blocks from campus. Reasonable. Comfortable. Inquire 519 W. College.

### LOST

BLUE AND Gold Schaeffer pencil in HUB, UBA during registration week. Finder call Ed, AD 7-2084.

METALLURGY 59 book in the vicinity of 200 Home Ec. south, Wednesday Feb. 5. Call AD 8-9095, George Whitmore. Reward.

AEPH SORORITY Pin initiated JS on back. If found call 216 Atherton or 22 Simmons. Reward.

STERLING SILVER Penn State sword pin on Monday Feb. 5; sentimental value. Call Ginny Taylor ext. 1085.

### WANTED

KITCHEN HELP. Call Alpha Tau Omega, AD 7-7683.

### MEALS

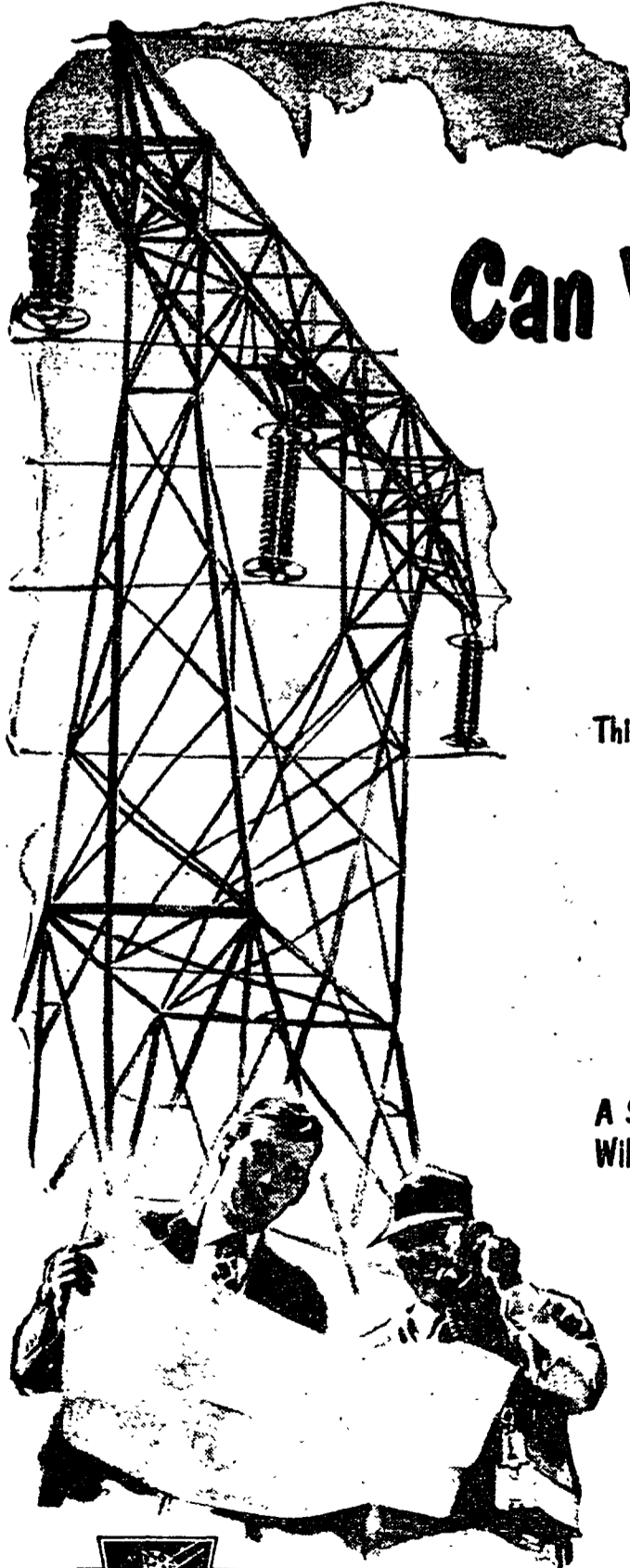
DELICIOUS HOME-COOKED meals at reasonable rates; any meal available. Call AD 8-9590 and ask for Chester.

### MISCELLANEOUS

FOR PROMPT and expert radio and phonograph service stop at State College T.V., 232 South Allen Street.

IS YOUR typewriter giving you trouble? If so, call AD 7-2492 or bring machine to 633 W. College Ave.

FOR GOOD RESULTS USE COLLEGIAN CLASSIFIEDS



# Can You Qualify?

The tremendous growth of our population and of our industries has placed an ever increasing demand on the electric power industry for more power, in more places, for more purposes.

Pennsylvania's Utility Companies are well aware of their responsibility to supply the vast amounts of electric power America needs so desperately. That's why they are constantly looking for graduate engineers with the qualifications to do this tremendous job.

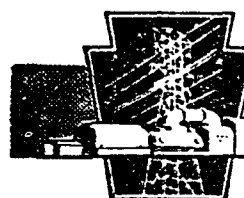
## This Can Be Your Future

If you can qualify as an engineer for a Pennsylvania Electric Utility Company, you'll be a respected, well paid, and an influential member of an organization that *must* double its output in 10 years.

And you'll be a member of an organization representing an advanced field of research science, dealing with such complex problems as atomic forces, electronics and automation in, virtually every form.

## A Select Group of Engineers Will Be Chosen...

by the Pennsylvania Electric Utilities Companies to play a dominating role in one of the greatest expansion programs the industry has ever seen. If you are interested, and feel you have the qualifications, get the facts on Pennsylvania's Electric Companies from your placement counselor. Have him make an appointment for you to see the representatives of the Electric Companies when they visit your campus.



**Pennsylvania Electric Association**

24 INDEPENDENT COMPANIES PROVIDING POWER FOR PENNSYLVANIA'S PROGRESS