

TKPhi, SPE Tie DU in IM Boxing

By ROCKY EPSTEIN

Theta Kappa Phi and Sigma Phi Epsilon moved upward in the fraternity intramural boxing standings last night. SPE, by virtue of wins by All-American guard Sam Valentine and Bob Berberich, and Theta Kappa Phi on the basis of heavyweight Dick Tkatch's victory, emerged from the evening's action with 45 points to land in a three-way tie with Delta Upsilon.

DU gained nothing as two of their last four entries were defeated. Only football players, Jim Lockerman, who fights SAE's Russ Mandeville for the right to meet Tkatch in the finals, Wednesday, for the heavyweight championship, and Paul North remain from DU.

Valentine had one of the shortest successful careers in IM boxing at Penn State. He won his first two fights by forfeits, stopped Don Meyer of Beta Theta Pi in 29 seconds of the first round in a heavyweight battle. Meyer could not even get started as Valentine, who was slipping a bit from the powerful force of his punches, connected with a flurry of rights and lefts to the body to put his opponent away for good. Valentine will be unable to compete in Wednesday's finals because he is leaving Monday for the East-West football game.

Omega Psi Phi's amazing 145-pound Arnie Roane continued on his merry way of knocking anyone who steps into the ring with him from here to eternity. Roane ended the pugilistic career of DU's Jack Stewart after only 20 seconds of the first had elapsed. Stewart, a two-time champion, hardly came out of his corner when Roane put him away for good with a flurry of his famous left and right hooks.

SPE's Bob Berberich also ended his fight prematurely when he stopped Charlie Dodd of Phi Sigma Kappa in a 175-pound struggle. Berberich fought like a wounded tiger until Ref Frank Patrick stepped in to end the contest in 20 seconds of round three.

In a 121-pound class fight, Joe Nudge, Alpha Gamma Rho, took a decision from Theta Kappa Phi's Jim Johnson. Nudge was the aggressor all the way with a furious attack of right crosses to the body and face.

Lambda Chi Alpha's Dick King gave it all he had in pounding out a win from Jack Maher, Delta Upsilon. Maher mixed it up with King to make the bout one of the evening's liveliest.

In a 165-pound independent battle, Tom Wooden put a hard right hand to good use when he outpunched and outboxed John Righi. Wooden had control of the fight right down to the wire in handing Righi the loss.

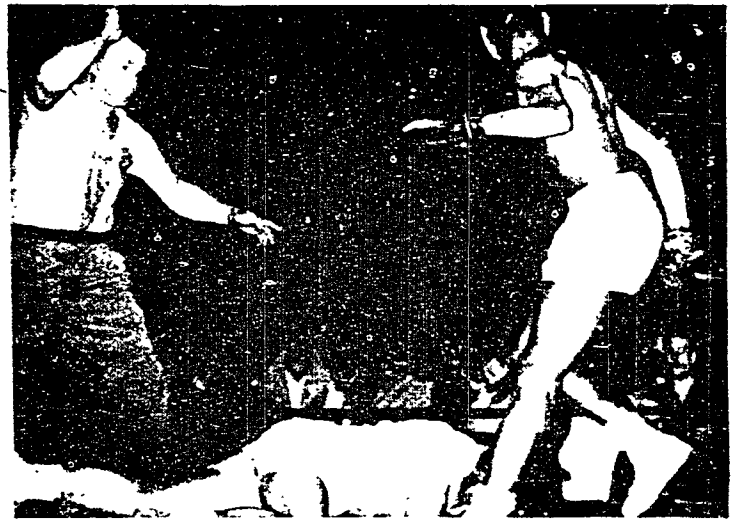
A rousing fight between Dick Tkatch, Theta Kappa Phi, and Frank Urban of Phi Delta Theta dominated heavyweight action. Urban, whose gas gauge read empty at the final bell, swung erratically at Tkatch, who at the fight's end probably had not more than an eighth of a tank left. Tkatch won the scrap by a close

margin and will go to the finals next Wednesday.

Ralph Brower, Alpha Sigma Phi, took advantage of tight range fighting to take a judge's verdict from Delta Sigma Phi's Tom Lozaw. Brower had a good right uppercut to clinch the decision from the Delta Sig bat-

tlar in a 165-pound battle.

Tau Kappa Epsilon's Fred Donahue swung like a madman in punching out a win over Fritz Condon of Theta Delta Chi. The Theta Delt put on a splendid performance of counter punching but it wasn't quite enough to take the
(Continued on page eight)



—Daily Collegian Photo by Joe Patton
ARNIE ROANE, Omicron Psi Phi, drops DU's Jack Stewart to the canvas in the first round of last night's 145-pound IM action. Roane was awarded the win over Stewart. Referee is Frank Patrick.

What's doing... at Pratt & Whitney Aircraft

THE HOUSE THAT JET ENGINES BUILT

Engineers and scientists at Pratt & Whitney Aircraft developed the piston engines that wrote aviation history for three decades. Then came the jet age, and again it was the P & W A team that came up with the mighty J-57, most powerful production aircraft engine in the world today. Behind such accomplishments, of course, stand many development tools...tools like the house that jet engines built: the Andrew Willgoos Laboratory.

Located on the eastern bank of the Connecticut River in East Hartford, this windowless, thick concrete-walled laboratory has been growing almost continuously since its initial "completion" in 1950. As more powerful, far more advanced turbojet engines are conceived, the means for testing them in development stages must itself undergo carefully calculated alteration. Hence, authorship of today's specifications for Willgoos Laboratory properly belongs to the experimental engines it is testing today. Similarly, tomorrow's proportions, capacities and equipment will depend upon the requirements of tomorrow's power plants.

Behind the ponderous walls of this multi-million-dollar structure lies the wherewithal to simulate many of the rigorous flight conditions to be encountered by military and commercial aircraft. The range of these conditions must vary from ambient pressures and temperatures in a static condition at sea level all the way to the pressures, temperatures and high speeds involved in high-altitude flight.

This, then, is the house that jet engines built; at the same time, it is the house that tomorrow's engines will change and re-build.

IM Bowling--

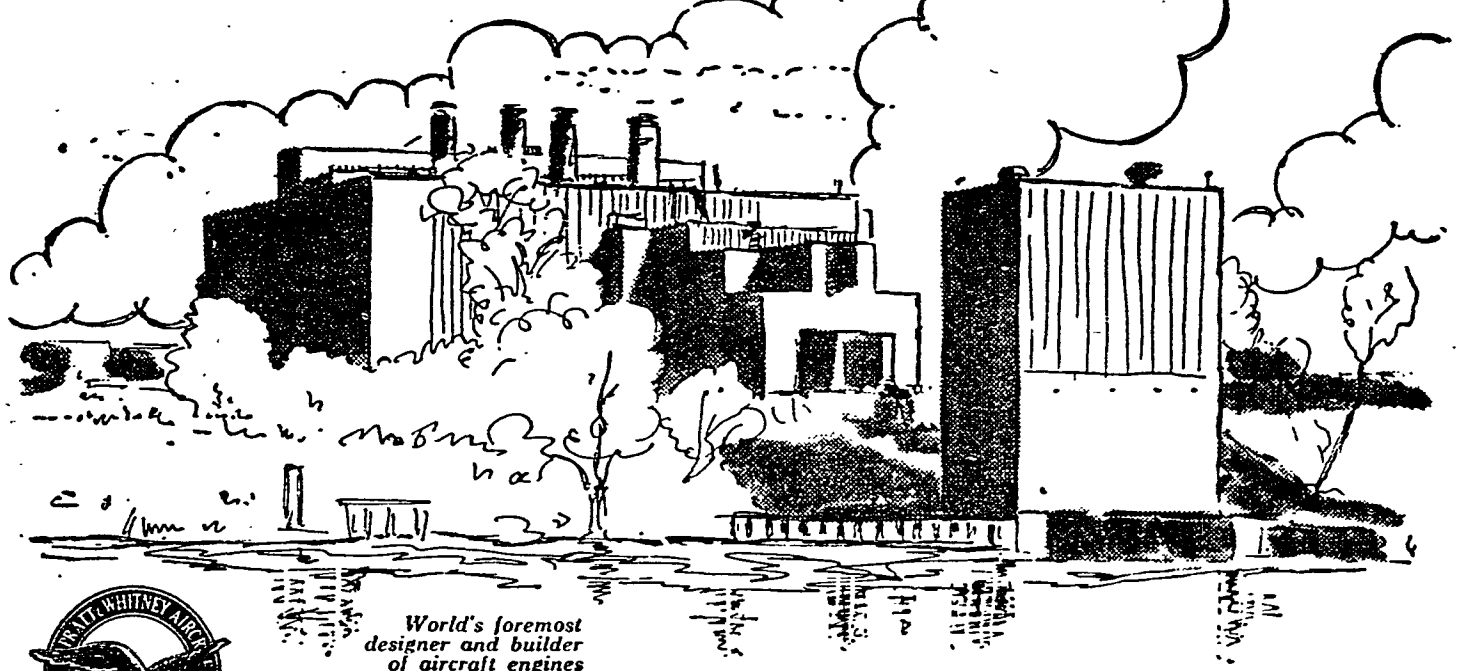
(Continued from page six)

Beta Theta Pi's Ed Lyon continued his ten-pin mastery, as his team took three of four tilts from Chi Phi. Lyon chalked up a 201 game and a 564 three-game total, while George Vince (167-466) was high man for Chi Phi.

Rounding out the "C" schedule, Phi Kappa Sigma topped Acacia, 3-1; Delta Sigma Phi downed Alpha Gamma Rho by a like margin; Pi Kappa Alpha divided four games with Lambda Chi Alpha; Sigma Phi Alpha defeated Theta Kappa Phi, 3-1; and Sigma Alpha Epsilon split with Beta Sigma Rho.

Top scores were turned in by Bob Shaw, Acacia (485), Bill Guhl, Phi Kappa Sigma (501), Don Lederer, AGR (201-469), Bob Stedman, Delta Sigma Phi (462), Bill McDade, PiKA (472), Bob Ferris, LCA (491), Bob Schuman, Sigma Phi Alpha (446), Jim Varshay, SAE (451), and Ray Fireman, Beta Sig (453).

"D" results: Ralph Holm (508) led Pi Kappa Phi to a 3-1 triumph over Phi Sigma Kappa; and Sigma Phi Epsilon copped three of four games from Sigma Tau Gamma.



World's foremost
designer and builder
of aircraft engines

PRATT & WHITNEY AIRCRAFT

DIVISION OF UNITED AIRCRAFT CORPORATION • EAST HARTFORD 8, CONNECTICUT