

Today's Forecast:
Cold and
Cloudy

The Daily Collegian

FOR A BETTER PENN STATE

Hungarian
Drive
See Page 4

VOL. 57, No. 57

STATE COLLEGE, PA., WEDNESDAY MORNING, DECEMBER 5, 1956

FIVE CENTS

Students, Officials Back Community Living Plan

Opinions received from both students and University officials have been highly favorable toward a community living plan, according to a preliminary report of the Association of Independent Men Community Living Committee.

The report shows a favorable reaction by seven faculty

Flash Cards May Face Relocation

John Kersh, Hat Society Council president, suggested at a meeting of the council last night that the flash card system be enlarged and moved to another section of Beaver Field next year.

Because of the construction of Beaver Field, a larger card section is needed in order for the spectators to receive the full value of the cards, Kersh said. He suggested approximately 800 cards instead of the 304 used this fall.

Although two possible new locations for the section were discussed, the council seemed to be in agreement that it should be in the middle of the stadium, across from the press box. The second suggestion was moving the section from the middle to an end of the horseshoe.

If the section is moved across from the press box, the participants of the system would, in all probability, be the seniors, Kersh said.

The council decided it would try to include on the spring elections ballot a question concerning the interest of the seniors in participating in the system.

A committee was set up to look into the feasibility of the card system as an activity.

Merle Brooks, member of Scrolls, who along with Sally Jarvis, member of Cwens, is co-chairwoman of the system, told the group that the system should certainly be given a chance to prove its worth.

Frosh Escapes Crash Injuries

Robert Homan, freshman in civil engineering from Boalsburg, escaped injury Monday when a truck pushed a car into the rear of his car on Route 322, one mile west of Boalsburg.

Police said a truck operated by Glenn Strouse of State College RD 1 struck the rear of a car operated by Robert Stuckenrath of Lewistown and pushed it into the rear of Homan's car.

Homan's and Stuckenrath's cars were stopped on the highway waiting for a car ahead to make a left turn.

Damage to Homan's car was estimated at \$200. Total damage was estimated at \$1100.



members and among 81 per cent of the 500 students of both sexes polled on the plan, which proposes a living program with equal numbers of men and women living in the same areas but in separate residence halls.

Daniel Thalimer, chairman of the committee and president of the West Halls Council, will present the report to the AIM Board of Governors at 7 tonight in 203 Hetzel Union.

Simes To Speak

Dean of Men Frank J. Simes, who favors the plan, will speak to the board on possible ways of arriving at such a program.

Of the 273 men and 227 women contacted in the student opinion poll, 406 (242 men and 164 women) favored the plan. Only 37 (11 men and 26 women)—7 per cent—opposed the program and 57 (19 men and 38 women)—11 per cent—had no feelings on the matter.

On the administration level, the report said, Wilmer E. Kenworthy, director of student affairs, has expressed an interest in the committee's findings and has guaranteed that the final report will be given "the fullest consideration."

Otto E. Mueller, director of housing, said he believes the program could be successfully operated at the University.

Favorable Opinions

Favorable opinions were also expressed by Ross Lehman, secretary of the alumni association; Rev. Luther H. Harshbarger, University chaplain; William B. Crafts, assistant to the dean of men; and Dr. Robert G. Bernreuter, head of the division of counseling.

The board will also discuss moves to investigate the traffic court and to express approval of a proposed extension of hours at the University skating rink from 10 to 11 p.m. Fridays and Saturdays.

Plans Revealed For Graduation

The January graduation exercises this year will be combined with the Baccalaureate services, with the program beginning at 2 p.m. on Sunday, Jan. 27 in Recreation Hall.

The deans of the nine colleges will present the graduates with their diplomas.

Guests of the graduates will not need tickets for the exercises.

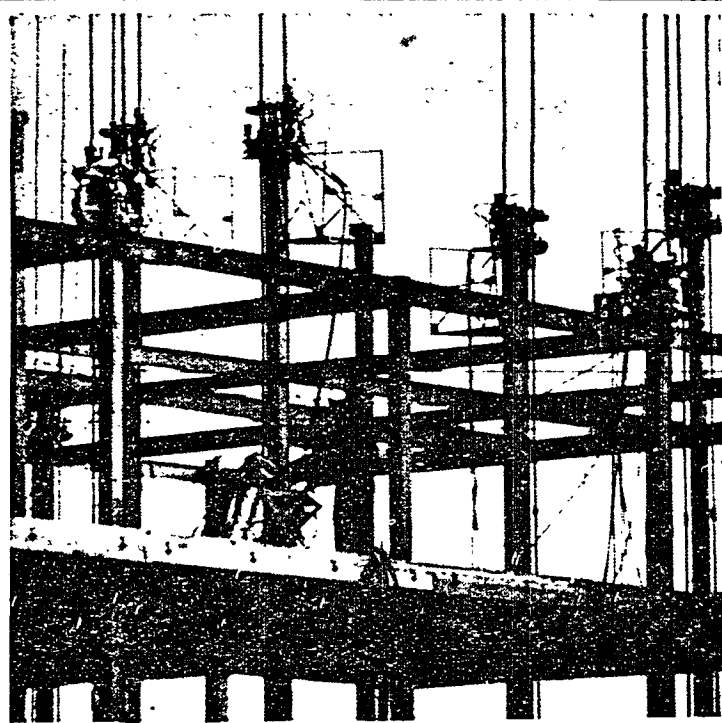
Detailed plans for the exercises have not yet been completed, but instructions to students who are being graduated will be issued by the University Marshal, David H. McKinley, about three weeks before graduation.

World Premiere Scheduled Here

The University will be the scene of a world premiere, complete with famous theatrical personalities, of Eugene Raskin's fantastic comedy, "One's a Crowd."

The play is scheduled to open Feb. 22 at Center Stage, with a Players cast.

Raskin, director of the advisory board of the New Dramatics Committee in New



A WORKMAN standing on the already raised third floor of the new women's dorms along E. College Ave., is shown operating the jack control valves. The hydraulic jacks which raise the floors into position are shown at the top of the photo. The method is known as "lift-slab."

Full-Time Student Enrollment Tops All Universities in State

The University has strengthened its ranking as the largest "full time" university in Pennsylvania.

Although fourth in total enrollment behind Temple,

Pittsburgh, and the University of Pennsylvania, the University's 14,689 full-time students far outnumber those at the other three institutions.

Current fall statistics show 9312 full-time students enrolled at the University of Pennsylvania, 8695 at the University of Pittsburgh and 8034 at Temple University.

The University's figures include 14,208 undergraduates and 481 graduate students on and off campus for its 14,689 full-time total.

Enrollment Increases

In total enrollment increase, the University ranks second among the "big 4" with 693 additional students. Penn showed the greatest increase with 845. Tem-

ple is third with an increase of 592, and Pitt ranks fourth with 207.

For part time enrollment, the breakdown shows Temple, 9808, Pitt, 8890, Penn, 7459, and the University, 1356.

Part Time Students

The University includes 355 undergraduates and 1001 graduate students in its part time total.

The total enrollment figures are, Temple, 17,842, Pitt, 17,585, Penn, 16,771, and the University, 16,045.

The University's on campus total includes 11,186 full-time, and 1271 part-time students.

Ogontz Center, at Abington, has 588 full-time students, the largest number at any center.

York, is also an associate professor of architecture at Columbia University.

The play was chosen by the director, Robert Reifsnider, associate professor of theatre arts, from a selection of plays sent to the University by the New Dramatists Committee.

The production of "One's a Crowd" is expected to draw both local and out-of-state audiences, including prominent New York theatrical personalities.

Pictures to Be Taken

A series of photographs of both the rehearsals and world premiere presentation will be taken for nation circulation in various well-known publications.

The New Dramatists Committee sponsors a plan which helps talented new playwrights who it feels are equipped to contribute in the immediate future to the theatre's need for new plays of high calibre.

Among the former New Dramatists who have already attained fame are Joseph Kramm, author of "The Shrike," Robert Anderson, "Tea and Sympathy," and William Inge, "Picnic" and "Bus Stop."

Directors Listed

Directors of the New Dramatists Committee include such noted people as Roger Stevens, Maxwell Anderson, Robert Anderson, Russell Crouse, Oscar Hammerstein II, Moss Hart, Joseph Kramm, Henry Morgenthau, Elmer Rice, Richard Rodgers, Michaela O'Hara, John Wharton, Howard Lindsey, and George Hamlin.

Tryouts for "One's a Crowd" will be held Dec. 16 and 17. Scripts are now available for reading in the Green Room in Schwab Auditorium.

Raskin will attend both the tryouts and many of the rehearsals to make any changes in the script that he finds necessary.

To Run for 6 Weekends

The play will be presented by Players in arena style at Center Stage and will play for six weekends.

This is the third original production presented by Players in the last three years. The first two, both written by students at the University, were "The First Day of Summer" by Bert States and "Pillars in the Night" by Bill Coleman.

Players' presentation of "One's a Crowd" is another step towards giving the department of theatre arts its rightful recognition, both locally and nationally, according to a departmental spokesman.

Clinton Voters Defeat Segregationists

CLINTON, Tenn., Dec. 4 (AP) — Clinton voters handed segregationists a 4-1 slap at the polls today as federal officials moved to halt a new outbreak of racial strife which closed Clinton High School.

The election returns showing an overwhelming defeat of candidates endorsed by the White Citizens Council were announced in the quietly tense town after a day crammed with these events:

Minister Attacked

1. A Baptist minister was attacked by a group of white men after he escorted six Negroes, who had stayed away from school four days, through a crowd of jeering bystanders to the school

er James C. Meredith 1,241-343. Meredith had been endorsed by the White Citizens Council, but neither candidate had taken a stand on the issue. Two alderman candidates supported by the council also were defeated.

2. The school board ordered the school closed "until further notice."

3. U.S. District Attorney John C. Crawford asked federal Judge Robert L. Taylor of Knoxville to order the "arrest of certain parties" for contempt of the court in Clinton disorders.

Brownell Wires Board

4. U.S. Attorney General Herbert Brownell wired the Anderson County School Board that the Justice Department would take action to protect those who obey Taylor's order desegregating Clinton High, but added that "the responsibility . . . rests upon state and local authorities . . ."

In the city election, Former Mayor T. L. Seeber defeated groc-

Brownell Answers Plea
Brownell's telegram was in answer to the board's resolution of Monday demanding federal help, and asserting local officers could not be expected to enforce a federal court mandate.

The attorney general said the FBI is investigating the situation with the object of bringing before the Knoxville court "on proper process all persons who may have willfully violated the order of the court."

He referred to a permanent injunction issued by Taylor aimed at halting mob disturbances the first week of school.

Weather Turns Cloudy, Cold

The Nittany Lion is solemnly sitting in his den this morning paying the penalty for walking in his shorts too long after yesterday's warm weather grew chilly last night.

Like many students, he grew optimistic concerning the warm weather and threw caution to the wind. Last night's and today's colder weather caught the Lion completely off-guard and he is now in the process of suffering through a common campus cold.

Cloudy skies with a high of 30-35 is forecast today. Some snow may arrive before evening.

This morning's low was forecast as 20-25.

