

# Intramural Grid Action Features Defensive Play

By LES POWELL

Touch football action last night featured defensive play, with none of the teams winning by more than two touchdowns.

In the evening's opener, the Timmites dominated first half play to down the Tigers, 14-0. Triangle recorded a first down in the final minute to beat Alpha Epsilon Pi, 1-0; the Kim Novak Nine defeated the Fortinsky Lions, 13-0; and the Ramblers eked out a comeback 1-0 win over the Lucky 13's.

An intercepted pass following the opening kickoff gave the Timmites possession on the Tigers' 30. On fourth down, Bruce Forbes passed to Don Farabaugh in the end zone for a 6-pointer. Pete Basile converted with a dropkick, the first such achievement in two seasons.

The Timmites added another tally in the first half, after an interception by Forbes. Basile tossed 35 yards to Bob Morrison for the score. Basile again booted the PAT.

### Tigers Threaten

The Tigers threatened in the second half, intercepting a Timmite aerial on their 24-yard line. Passes from Walt Voight to Dave Lake and Gene Leber moved the pigskin to their opponents' 20, but an interception on the 15 halted the drive.

Triangle's win was gained by virtue of Dick Bunn's 26-yard jaunt for a first down in the closing seconds.

### Novak Team Scores

Novak Nine's initial score came on the opening kickoff. Passes from Greg Richter to Buck Welsh to Dave Herpel moved the ball 80 yards across the Fortinsky goal line. Welsh passed to Richter for the point-after. A 66-yard return of an interception from Welsh to Dick Kaufman accounted for the second "Kim Novak" tally.

The Ramblers scored in the last minute of play to tie the Lucky 13's at 7-7, an edge in first downs handing them the victory. Dan Schmidt heaved a 40-yarder to Howard Reed on the Lucky 13's 11-yard line. Then Schmidt tossed to Jack Shober for the crucial score. Al Weakland successfully converted to knot the count.

### 85-Yard Pass Clicks

An 85-yard pass from John Zuber to Bugs Bergman gave the 13's their lone TD. Bergman place-kicked for the conversion.

In the closing contest, Phi Epsilon came from behind to nose out Pi Kappa Alpha, 6-2. PKA's Dave Baumann caught Phi Ep's Howie Felt in the end zone for a 2-0 first half lead. Jeep Epstein pulled the game out of the fire for Phi Ep by picking off a PKA aerial and racing 25 yards for the game-winning tally.

### Booters Visit —

(Continued from page six)

right, and Nute at center forward.

John Lawrence will guard the nets.

Torgeson is nursing a bruised foot but he is expected to be in the starting array.

In reserve roles, Hosterman will be able to call upon halfbacks Herb Hertner, and Paul Bauer, fullback Cal Emery, lineman Bruce Walsh, and goalie Don Dougald. All are sophomores.

### thought of SPUDNUTS

30 DIFFERENT VARIETIES

- Breakfast ●
  - Coffee Break ●
  - Dessert ●
  - Snack ●
  - Any Party ●
- AD 8-6134  
Phone 1 day ahead



### Pigskin Coin Flips ...

## Out On a Limb

There must be some great minds on the sports staff of The Daily Collegian—for they certainly run in the same channel!

The reference, of course, is to the remarkable display of agreement again exhibited in our weekly football poll.

Joe Paterno represents the coaches this week, and, except for his choice of Wisconsin over Southern California, also displays a "great" mind.

	Fanucci .733	Carocci .733	Prato .767	Coaches .700
OSU-Stan.	OSU	OSU	OSU	OSU
Pitt-Cal.	Pitt	Pitt	Pitt	Pitt
SMU-Mo.	SMU	SMU	SMU	SMU
Colg.-HC	Colg.	Colg.	Colg.	Colg.
Fla.-Ky.	Ky.	Ky.	Fla.	Ky.
Tul.-Nthwstn	Tul.	Tul.	Tul.	Tul.
Baylor-Md.	Baylor	Md.	Md.	Md.
Texas-W. Va.	W. Va.	W. Va.	W. Va.	W. Va.
Illini-Wash.	Illini	Illini	Illini	Illini
USC-Wisc.	USC	USC	USC	Wisc.
Minn.-Pur.	Pur.	Minn.	Minn.	Minn.
Tenn.-Duke	Duke	Tenn.	Duke	Tenn.
LSU-Rice	LSU	Rice	LSU	LSU
Mich. St.-Mich.	Mich. St.	Mich. St.	Mich. St.	Mich. St.
Ga.-Miss. St.	Ga.	Ga.	Ga.	Ga.

## Cadets Have Strong Line--

(Continued from page six)  
his attack via the ground route almost all of the game.

One weakness was noted in the Army defense, however. The Cadets' pass defense was below par in the VMI encounter, and undoubtedly Lion quarterback Milt Plum will take to the air if this weakness has not been remedied.

The Lions may have to take to the air without too much choice if the much publicized Army line holds true to form. On the forward wall for Blaik are Art Johnson, Loren Reid, Dick Stephenson, Stan Slater, Flay Goodwin, and captain Ed Szvetez. Joe Bishop and Dick Fadel are battling on even terms for a vacancy left by All-American Ralph Chesnauskas.

But Lion Coach Rip Engle will try to match Army's line with an experienced one of his own. The same line that started against Penn, except for one position, will take the field today. Jack Farls will be a right end in place

of Doug Mechling in today's game.

Les Walters will be at left end, Jack Calderone and Walt Mazur will be at tackles, captain Sam Valentine and Dick DeLuca will man the guard slots, and Dan Radakovich will be at center.

In the backfield the same four will start. Plum, quarterback, Billy (the Kid) Kane and Ray Alberigi at halfbacks, and Emil "Babe" Caprara at fullback.

"Each time," Engle added, "we went into the game hopeful of winning. This year is no exception. We'll know more about ourselves after the game than before."

A Glance at . . .

# SPORTS

By VINCE CAROCCI  
Ass't Sports Editor



### CROSS-COUNTRY???

What is in store for the Nittany Lion cross-country contingent this season? That's the imposing question which faces coach Chick Werner and his assistant Norm Gordon before next week's opener against Cornell at Ithica, N.Y.

Werner has planned a handicap race for today to be run over the first three miles of the harrier course for his runners. This will definitely be the stiffest test he has put before his squad to date.

This should give Werner a fair idea of what he must work on during his last free week. His runners will definitely have to be at their very best in order to make a good showing. Starting later than the first man and running with the intent to win is no fun for anyone—not even the best runner in the country.

As things stack up at the moment, Ed Moran, Fred Kerr, and Clem Schoenebeck are the best the Lions have to offer. However, there is nothing wrong with having three men who finished in a tie for first place in each of the freshman meets last season. The three also led the frosh to a second place finish in the IC+A meet in New York last year.

Even though they are untested in varsity competition, we believe that they definitely have the potential to lead the Lions to a successful season. Werner shares that belief also, although he prefers to look at it a bit apprehensively.

The two big question marks as far as Werner is concerned are captain Don Woodrow and sophomore Bob Thompson. Both seem to have the qualities to be good runners. Woodrow has had two previous years of varsity experience while Thompson was an outstanding frosh along with the "big three."

Both have had some trouble in getting started this season. Werner and Gordon do not know what is the exact source of the trouble. The word has it that they are starting to look a little stronger each day—they may find themselves in time for the opener. If they do, the Lions could be tough this year.

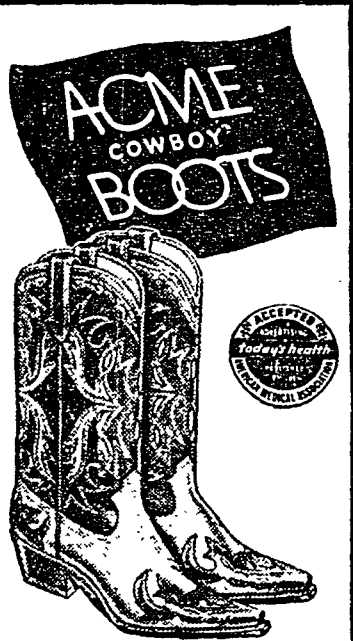
### A LIMB OF OUR OWN:

Today the Lion football team meets West Point on hostile grounds in the first of their battles against some of the nation's top teams. The gridders are the underdogs, although some of the nation's sports reporters have picked them to upset the Cadets.

Don't be surprised if they do—we will not. Taking a hunch on team spirit, team balance, and team hustle, we pick the Lions to win by a touchdown. We will know the answer some time this afternoon.

### WORLD SERIES PREDICTION:

The Yanks are down 2-0 in the classic of baseball. However, knowing the Yankee spirit and competitiveness, they can not be counted out until the fourth game is tucked safely under the Dodger's belt. Look for a complete reversal in the New Yorker's game—Dodger fans hold your breaths, it is not over yet.



STYLE 6000  
MEN'S

WORKMAN and  
WESTERN SUPPLY

310 W. Beaver



USE

# Old Spice

PRE-ELECTRIC  
SHAVE LOTION

to get a better shave!

Quicker . . . closer . . . smoother . . .  
no matter what machine you use. 1.00  
plus tax

SHULTON New York • Toronto

### COLISEUM ROLLER SKATING

Rt. 45, E. College Ave.

TUES., WED.,  
FRI., SUN.