

Hoyas Host Lions; Pitching Woes Erupt

If Penn State's baseball team is going to hit a slump it will probably be this week, unless Coach Joe Bedenk's mound corps can come through in fashionable style. The successful Lions engage Georgetown University this afternoon at Washington, D.C., in a doubleheader and then meet Navy Saturday on Beaver Field.

The Navy game will be the fourth game of the week for the twice-beaten Lions, and this, according to Bedenk, will practically drain his pitching staff.

In today's contest Bedenk will go with either southpaw Stan Szymanski or righthander Ron Smith in the first game, and righthander Maurice Peace in the second. If the Lions drop the opener Bedenk said he may go with his ace Ed Drapcho. Drapcho is the probable starter for the Navy game, but if he goes today Stan Larimer will start Saturday.

Lineup Remains Same
Bedenk's lineup for today will have Don Stickler catching, Gary Miller at first, Lou Schneider at second, Guy Tirabassi at shortstop, Steve Baidy at third, Bob McMullen in left field, Jim Lockerman in center, and either Jack McMullen or Dave Watkins in right.

Bob McMullen has been the most torrid hitter at the plate for the Lions. The senior captain has drilled seven hits in his last eight times at the plate, bringing his batting average to .442, highest on the team. He is leading in base hits, 19, and has the most doubles, six.

Jack McMullen Hitting .346
Other top hitters are Jack McMullen, .346; Gary Miller, .324; and Don Stickler, .318. Miller is one of the leading RBI producers with 11 to his credit.

On the mound staff Drapcho continues to set a record-setting pace with a .79 earned run average. He has five wins as against one loss. Stan Larimer lowered his ERA to a 2.00 from a 2.46 via his outstanding pitching against Bucknell Tuesday.

Drapcho is leading in innings pitched with 57, strikeouts, 47; and base on balls, 29. He has allowed only 26 hits in the 6½ games he has pitched. Larimer, in his four assignments, has allowed 18 hits and 10 runs, seven of which are earned.

IM Track Entry Deadline Tuesday

Entries for this Spring's Intramural track tournament are due by 4:30 p.m. Tuesday in the IM office, according to Dutch Sykes, assistant IM director. The cost is \$1 per team. Independents may register individually for 25 cents.

The three-day tourney, which begins May 22, limits entrants to two of the running events. Six events are listed: 100 and 440 yard dash, 880 yard relay, high jump, broad jump, and 16 pound shot put.



PIZZERIA

BEST IN TOWN

Oven Hot PIZZA
(IDEAL FOR STUDY BREAKS)

You've never tasted better PIZZA. Crisp crust generously covered with savory tomato sauce and tangy cheeses—the PERFECT TASTE TREAT.

Only Home Delivery Pizza delivers directly to you piping hot, or serves you in five minutes at the bakery.

Special Price for Large Parties
Call day, night, and Sundays
AD 7-7697

the home delivered
PIZZA
129 S. Pugh St.

HyFliers Win 'Lost' Game In IM Soccer

The Independent HyFliers won a "lost" IM soccer game from the league-leading Co-op squad Tuesday evening. Co-op defeated the HyFliers, 4-2, but used an ineligible player and forfeited the game to the new League A leaders. The HyFliers now have a 2-0 record.

Delta Tau Delta was the only fraternity team to play its second game of the young season Tuesday. The DTD's defeated Phi Mu Delta, 6-1, on cornerkicks to even their season record at 1-1.

Zeta Beta Tau lost to Sigma Pi, 3-0; Kappa Delta Rho defeated Tau Phi Delta, 2-0; Theta Xi shut-out Delta Chi, 5-0; Sigma Phi Epsilon blanked Phi Gamma Delta, 2-0; and Alpha Sigma Phi stopped Beta Theta Pi, 1-0.

Theta Chi and Phi Sigma Kappa defeated AGR and Acacia on cornerkicks when the regulation games ended in 1-1 ties.

Nick Thiel, Penn State lacrosse coach, represents his sophomore star, Bill Hess, as "outstanding in dodging and shooting."

3 Fraternities Win Quarter-Final Tilts

Alpha Zeta, Theta Xi, and Delta Chi survived quarter-final tests Tuesday night at Recreation Hall in the Intramural volleyball tournament which reaches a climax tonight.

League A titlists Alpha Zeta edged Beta Theta Pi of league D, 8-15, 15-11, 15-9. Alpha Zeta's semi-final opponent is Theta Xi, who nipped Theta Delta Chi, 12-15, 15-5, 15-13.

Defending champs Delta Chi of loop B tripped Tau Phi Delta in the other quarterfinal match, 16-14, 5-15, 15-10. Delta Chi meets Alpha Sigma Phi who drew a first-round bye.

Yankee Streak Snapped; Bosox Win, Gain Ground

NEW YORK, May 9 (AP)—A glaring muff by Mickey Mantle and a bad throw by Tom Morgan presented Cleveland with an unearned, tie-breaking run in the ninth inning for a 6-5 victory over the New Yorkers today.

Sophomore sensation Herb Score was the winner, Morgan the loser.

After Rocky Colavito had flied out, Mantle dropped Chico Carrasquel's routine fly to shallow center for a one-base error. Pinch-hitter Gene Woodling bounced out, Carrasquel moving to second.

At this point, Manager Casey Stengel ordered an intentional pass to pinch-hitter Hal Naragon. The strategy seemed to work as Jim Busby tapped weakly in front of the plate, Morgan's hasty throw however, glanced off Busby's shoulder and bounced out of Bill Skowron's mitt, allowing Carrasquel to score from second with what proved to be the winning run.

BOSTON, May 9 (AP)—Boston defeated Chicago 7-5 today for its sixth victory in the last seven games on rookie Dave Sisler's

brilliant relief pitching and a tie-dissolving, three-run inning.

The Red Sox broke a 4-4 deadlock with four singles and a double good for three runs in the sixth.

With one out, Jim Piersall, Don Buddin, Sammy White and winning pitcher Tommy Hurd singled in succession for two runs. That was all for reliever Mike Fornieles.

Billy Goodman, who got three doubles and a single in five trips, rapped one of his two-baggers off Jerry Dahlke for another tally.

Chicago became menacing in the eighth. Ron Jackson beat out a hit off Buddin's glove and went to third on Lollar's double. Northey's sacrifice fly made it 7-5. When pinch-hitter Cal Abrams and Jim Rivera walked to fill the bases, in came Sisler.

Two-Sport Standouts

Penn State's 1956 baseball team boasts two two-sport athletes. Third baseman Steve Baidy, of Williamsport, also plays basketball. Center fielder Jim Lockerman, of Cheswick, doubles as a fullback on the football squad.

Graduating Electronics & Mechanical Engineers...

How long will you be "Junior" in your job?

READ THIS CHECK LIST BEFORE MAKING A FINAL DECISION. IT MAY INCLUDE FACTORS YOU HAVE NOT CONSIDERED.

WILL MY STARTING SALARY BE

- Equal to industry standards?
- Better than industry standards?

Gilfillan starting salaries are higher than overall industry standards (averaging \$100 a month higher even in this competitive area). This is because, at Gilfillan, the individual's capacity develops more rapidly than under rigid corporation training systems. He is literally worth more from the start.

HOW RAPIDLY WILL I ADVANCE?

- At predetermined intervals, according to a rigid seniority system?
- As rapidly as my abilities warrant?

At Gilfillan, there is no "hierarchy" or seniority system. Individuals advance as rapidly as abilities develop. Salaries are reviewed at least twice a year.

WHAT WILL MY "STANDING" BE?

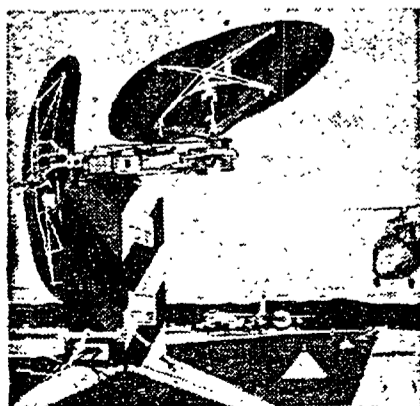
- Will I have to work at a board, punch a time clock, or be docked for time off?
- Will I have professional standing?

At Gilfillan, you do not punch a time clock. You work at a desk, in a professional atmosphere, and are subject to your own conscience when you need personal time off.

CAN I "CARRY THROUGH" ON MY OWN IDEAS?

- Up to a point, then senior engineers take over?
- All the way through to production?

At Gilfillan, a man with a sound idea is "given his head" and complete team project cooperation. An assigned technician reports directly to the engineer, for construction and wiring of circuits. The engineer carries full design responsibility



GILFILLAN GCA QUADRADAR provides Search, Precision Final Approach, Height Finding and Airport Taxi Control in a single, air-transportable equipment. Designed for and highly efficient in handling military and civil jet aircraft, Quadradar has received immediate and universal acceptance.

through production. Creative ability is recognized in overall advancement and specific rewards such as large bonuses for patents.

WILL MY FIRM BE THE RIGHT SIZE?

- Is it so large I could be lost in the shuffle?
- Is it so small that the work may not be pure engineering?
- Is the firm growing, so I can grow with it?

Gilfillan is neither a giant nor a small, limited company. Seven Gilfillan plants are located in Southern California, with Engineering Headquarters at Los Angeles. Gilfillan is large enough to handle all phases of research, design and development, yet not so large a man gets lost. The individual's growth is assured by the continuing Gilfillan expansion program.

WHAT WILL BE MY "FIELD" OF WORK?

- Will I be confined to one field or have opportunities in a diversity of fields?
- Will these include "tomorrow's" newest areas of electronics development?

Gilfillan is best known as the pioneer of GCA radar and all its major improvements. Including the Gilfillan GCA Quadradar—yet GCA is only one facet of Gilfillan activities. The firm has been engaged as a prime supplier of research, development and production of Military Electronics Systems since 1942, including Missile Guidance systems, airborne and ground; Electronic Countermeasures; Navigational Radar (GCA and AGCA); and Electronic Radar Trainers. Gilfillan is now concerned with many of today's newest, classified areas of electronics exploration and development.

CAN I IMPROVE MY PROFESSIONAL KNOWLEDGE AND STATUS?

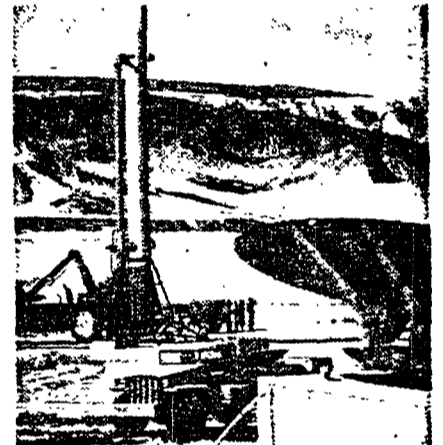
- Will tuition be paid by my firm?
- Will I be given aid in publishing technical articles?
- Will the experience of the entire engineering group be available to me?

Gilfillan pays tuition at universities or technical institutes. All possible aid is given in individual publishing of technical articles. Continuing symposiums make the total knowledge of the Gilfillan engineering staff available to the individual.

WHAT ABOUT THE STABILITY OF MY JOB?

- Does it depend on temporary big contracts?
- Is the firm a "war baby" type that may or may not be permanent?

Gilfillan has appointed new engineers every year since the firm was established in 1912. Current openings are in no sense emergency or temporary big contract jobs, but part of continuing Gilfillan expansion.



THE ARMY'S CORPORAL. Prime Contract for Basic Research and Development—Jet Propulsion Laboratory of California Institute of Technology. Prime Contracts for Development (improvement and simplification of ground and airborne electronics systems; and Production (ground guidance systems and airborne electronics) — Gilfillan. Gilfillan also holds Prime Contracts, many developmental, with the Air Force, Army Ordnance, Army Signal Corps, United States Navy, Royal Canadian Air Force, Royal Australian Air Force, South African Air Force and the French Government.

WHAT ABOUT MY JOB LOCATION?

- Is it in an area with few other electronics firms, so I might find myself in a backwater?
- Is it in the center of the industry, so there are many opportunities if I want to make a change?

Gilfillan Engineering Headquarters is in Los Angeles, now the center of the Electronics Industry, with more than 165 firms in operation. Among these, Gilfillan reputation is tops, broadening opportunity if the Gilfillan engineer should decide to go elsewhere. However, it is fair to say that, once acquainted with the firm's operation, Gilfillan engineers plan to stay permanently, because of superior opportunities for a comprehensive, remunerative, and secure lifetime career.

CAN I GET MORE GILFILLAN FACTS?

- By correspondence?
- Personally?

Both. Address specific inquiries to R. E. Bell, Gilfillan Bros., 1815 Venice Blvd., Los Angeles, Calif. An interview will be arranged. If you are in the Los Angeles area, telephone Mr. Bell at DU 1-3441.

Gilfillan

Los Angeles

PRIME CONTRACTORS FOR COMPLETE SYSTEMS

Electronic Countermeasures
Air Navigation Aids • Guided Missiles
Airborne Radar • Radar Trainers