

# 'An Inspector Calls' Reveals An Unusual, Hidden Mystery

By PAT HUNTER

A hidden crime without the usual arrests, violence, clues and other mystery "whodunits" will be revealed at 8 p.m. tonight when Players present "An Inspector Calls" on the new open stage in Schwab Auditorium.

The show, which is the final Players' production, will also be presented tomorrow and Saturday. Tickets, available at the Hetzel Union desk, are 60 cents for tonight and \$1 for tomorrow and Saturday.

Written by J. B. Priestly, one of England's leading playwrights, "An Inspector Calls" had its debut in Moscow in 1945. It was successfully produced in nine foreign countries before being presented in the English language. It was produced in London in 1946 and the following season had an extended run in New York.

### Detective Appears

The plot hinges on the sudden appearance of a mysterious detective, Inspector Goole, played by Bruce Taylor, who reveals a hidden crime at the engagement party of pretty Sheila Birling, played by Valentina Kopach.

Dominic Landro is cast as Arthur Birling, the wealthy tycoon who confesses to starting a young girl on the road which ended in suicide. Sybil Birling's wife and partner in the so-called crime is played by Grace Bonnett.

Others in the cast are William Warthling as Gerald Croft, Sheila's fiance; Sheldon Odland as Eric Birling, the son of the wealthy family; and David Thompson as Edwards, the butler.

### Open Stage to Be Used

The temporary open stage built for "An Inspector Calls" is a modern concept as well as a return to a classical form of theatre. Built along the lines of the Elizabethan stage at Stratford, Ontario, the open stage juts out from the traditional proscenium of Schwab Auditorium, bringing the play into the same room as the audience.

Some of the greatest plays of both East and West have been written and played on such simple acting platforms.

The new stage, according to Kelly Yeaton, associate professor of dramatics, represents a "direct attack on the sight and sound problems in Schwab Auditorium, which have been hindering Players' designers and technicians since the auditorium was first used for plays."

The open stage is also used to lend dignity, simplicity, and significance to the action in "An Inspector Calls."

## Eng Staff Names Girl of The Year

Sally Rolston, sophomore in arts and letters from Harrisburg, was named The Penn State Engineer Girl of The Year, at the magazine's annual banquet which was held last Tuesday night.

Miss Rolston was chosen by the junior and senior board members of the Engineer staff from the engineer girls of this past school year.

Peter Graybash, co-editor of the magazine, acted as master of ceremonies and passed out certificates to retiring senior boarders.

Robert Hennessy, retiring editor, gave a farewell address.

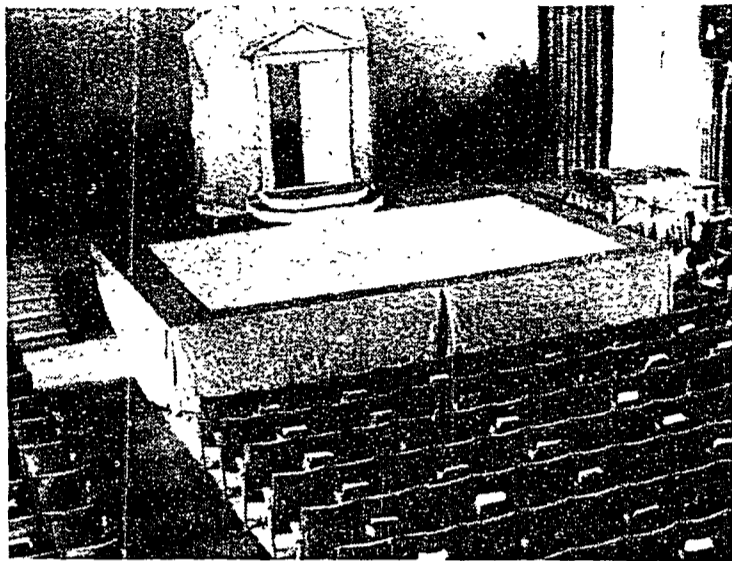
### Chimes Will Elect Officers

The new members of Chimes, junior women's hat society, will elect new officers at 6:30 tonight in Simmons lounge.

Players present in

AN INSPECTOR CALLS  
J. B. PRIESTLEY

**TONIGHT**  
Friday & Saturday  
At Schwab Aud. • 8:00



—Dave Bavar Photo

THE NEW temporary open stage built in Schwab Auditorium for the Player production "An Inspector Calls" which will be presented tonight, tomorrow and Saturday.

## Modern Dancers To Give Concert Tonight, Saturday

Twenty coeds will slip into dancing shoes at 8 tonight when the Women's Recreation Association Modern Dance Concert Group presents the first production of its annual spring concert in the White Hall Rhythm Room.

The second presentation will be held at 8 p.m. Saturday.

Seven numbers, including arrangements from Huxley's "Brave New World," Tchaikowsky's "Nutcracker Suite," Moussorgsky's "Story of Job," and group movements to French, Israeli, and American folk songs, comprise the core of the program.

Members of the dance group participating in the concert are Emily Anderson, Phoebe English, Hope Evans, Lana Gerhardt, Nancy Hibbs, Joan Hickerson, Alberta Hoffman, Rosetta Kearney, Margaret Leuschner, Ethel Littles, Betty Love, Marlene Malizia.

Also Wendy Mayer, Ruth Nissen, Emilie Popp, Charlotte Staroscik, Lorna Sweitzer, Sheila Strain, Mary Lou Thomas, and Constance Paulakos.

### ACE Convention Report To Be Given Thursday

David Faust, sophomore in business administration from Bloomsburg, will report on the Association of Childhood Education's national convention at an ACE meeting at 7 tonight in Atherton lounge.

## Pattee Library Displays Ads

Advertisements, chosen by a distinguished board, in collaboration with The Saturday Review, as the 1955 winners for advertising in the public interest, are now being exhibited in the main lobby of the The Fred Lewis Pattee Library.

The display offers graphic evidence of advertising's advancing role in the United States, and is presented by the local chapter of Alpha Delta Sigma, national advertising fraternity. Its permanent home is at the University of Oregon where a Court of Honor has been established for the award-winners.

Included in the display is the cancer poster by the Metropolitan Insurance company. The "Forest Fire Prevention" campaign poster, prepared by the Advertising Council, is another of the award-winners.

## Dairy Competition Will Open Today

The annual dairy product judging contest will be held at 3:10 p.m. today in 4 Dairy Science.

The contest will include two divisions: professional and amateur. Each contestant will submit eight samples each of ice cream and milk.

Prizes to be awarded to winners include a wrist watch, toaster, electric razor, leather brief case, pen and pencil set, medals, and cash prizes.

## Mike—

(Continued from page four)

HUB for a subject—it's got those sleek, modern lines.)

A study of these people is interesting. Yesterday a young coed was perched atop a bench in the West Dorm courtyard peering intently (in other words, squinting) at that most beautiful and at the same time, most puzzling of all edifices on the campus, Willard Hall.

This young would-be artist, dressed in a very arty costume, unfastened this gaze after about thirty seconds and then began stroking gracefully on a small notebook. After half a dozen strokes she again began staring at Willard. Then six more strokes. Then a gaze; then strokes. A masterpiece in the creation!

I always thought Willard was square.

### MORE OBSERVATIONS

Having to take a Philosophy 1 blue book this morning has forced me to read a certain book by Irving Copi, lately. While perusing this book, I ran across an example of some sort of fallacy. It concerned the young boy who, after brutally slaying his father and mother with an axe, threw himself on the mercy of the court because he was an orphan. Come to think of it, there is something wrong with reasoning.

The well-known grapevine has brought to this corner complaints of the rules which the housing department has placed on men and women dormitory students. These gripes especially concern the objects which are not allowed to be kept in rooms, and the way these illegal objects are removed. This is one time when the dean of women's office won't be able to take the blame.

The Associated Press has

brought us the little gem from Catania, Italy. And we quote, "Giusseppe di Stefano, 70, went on trial today for locking up his wife, Rosa, 65, in a small chicken coop for nine months, after a quarrel.

"Police said he gave her only water and pieces of hard bread every two or three days. Police released the woman after a newspaper story of her imprisonment." Isn't love wonderful?

### Sociology Club to Meet

Marianne Wittrick and Frank Feeny, of the bureau of alcoholic studies, State Department of Health, will speak on "Case Work With Alcoholism," at a meeting of the Sociology club at 7:30 tonight in the Mineral Science Auditorium.

## STUDENTS

Why trudge home with all those winter clothes

Store them fill next semester at "Penn State Dry Cleaning"

Here they will be guarded against moths, fire and theft, in our personal "BOX STORAGE" only costs \$4.95 per box plus cleaning charges

Penn State Dry Cleaning and Laundry Service

320 W. College Ave. Dial AD 7-7629



# HASPEL Prado Cords

TAILORED OF COOL, CRISP-WRINKLE-SHED COTTON and STYLED IN THE POPULAR FLEET MODEL (natural shoulders and tapered trousers) FOR FLATTERING APPEARANCE and CONTINUED COMFORT. AVAILABLE IN HAIR-LINE CORDS—BLUE, GREY OR TAN. SEE THEM TODAY!

The style is right and the fabric is light... in this most famous of Haspel Suits.

27.50

# Kalin's

MEN'S STORE STATE COLLEGE

# The First National Bank of State College

Member of  
Federal Deposit Insurance Corporation  
Federal Reserve System

New Flight

## BUFFALO

Niagara Falls

## ATLANTIC CITY

CLEVELAND • NEW YORK • PHILADELPHIA • PITTSBURGH

Connections to CHICAGO and all points

Phone Philipsburg 25 or Your Travel Agent

Flights Depart from Black Moshannon Airport

# ALLEGHENY

Airline of the Executives