

Perez Elected Eng Council Faculty Adviser

Lawrence Perez, professor of civil engineering, was reelected faculty adviser of the Engineering Student Council last night.

The council presented him with a wrist watch in appreciation of his services to the group. He has been adviser to the council for eight years.

A motion was passed to sponsor fall classes under the direction of Perez for instruction in the operation of calculating machines. The class schedules for students will be announced in the fall.

The council will sponsor jointly with the College of Engineering and Architecture an honors day to be held at 4 p.m., May 22, in 110 Electrical Engineering. Students of the college will receive awards for scholastic achievement.

The council passed a motion to sponsor the General Electric "House of Magic" show in Schwab Auditorium in the fall. A date has not been set for this event, but the show will probably take place in the latter part of September.

A committee was appointed to investigate the feasibility of a council scholarship for engineering students.

Gift Suggestions--

(Continued from page one) the possibility of a softball diamond. Board members added that at present University tennis court facilities are not adequate and with the anticipated increase in enrollment during the next 10 years, the situation would become intensified.

'Farmer' on Sale Today

The May issue of the Penn State Farmer is available on Ag Hill.

Among the features of the Spring issue are articles on the back yard barbecue, tropical parasites, and flower judging.

Remember Mom...



S-T-R-E-T-C-H for your nylon. Gotham Gold Stripe, the essence of fit-perfection in a dress sheer, stretch stocking. KALIN'S DRESS SHOP.

Perfect for under her prettiest summer sheers. Surprise your mother with a cotton batiste slip. THE KATZ SHOP features them with shadow paneling. S.M.L.—\$3.95.



Make Mother's Day complete with a summer blouse from LEITZINGERS. Choose from a fine selection of pure silk, dacron or cotton blouses. Fine for wearing with suits. \$2.95 to \$5.95.



For the largest variety of Mother's Day gifts, shop at ETHEL MESERVES, where you buy the finest.

COLLEGIAN CLASSIFIEDS

RATES
17 words or less:
\$0.50 One insertion
\$0.75 Two insertions
\$1.00 Three insertions
Additional words 3 for .05 for each day of insertion.

FOR SALE
TWO LOUNGE chairs in good condition. \$25; picture window drape, 52-foot wide, \$20; G.E. upright cleaner, \$8. Phone AD 7-4284.

MOTORCYCLE Harley-Davidson "74". Ask for Harry Cavey, 110 S. Barnard St. Phone AD 8-3553. Asking \$150.

LEICA III-F, self-timer, 1:20 Summarit lens, case, all brand new, used twice. Absolutely A-1 condition. Call Ron Walker, AD 8-4191.

MUST SACRIFICE apartment furniture—living room, kitchen, bedroom plus 21-inch TV Hi Fidelity unit. \$550. Call after 8 p.m. AD 8-8820.

ALTO SAXAPHONE, Selmer "Bundy" pre-World War II. Excellent condition. Beautiful finish. Call evenings after 8:00. AD 8-8820.

1948 PACKARD convertible. Fully equipped and overdrive. Needs minor repairs to electrical windows. First \$85 takes it. Phone AD 8-6569.

1948 BUICK Super convertible. Excellent condition. Fully equipped including power top, windows and seat. \$150. Phone AD 8-6569.

1939 FORD 4-door convertible (Pheaton). Excellent condition. Everything original. \$200. Phone AD 8-6569.

1950 FORD 2-Dr., 48,000 miles. Good rubber, new brakes, good engine. \$225. Needs nothing. Call after 8 p.m. AD 8-8820.

GOLF CLUBS—set of four McGregor woods, as seen at caddy house.

FOR SALE
TYPEWRITER—REMINGTON Rand standard office, noiseless. Almost new. 20" carriage. Cost new \$260. Sacrifice \$85. Bill Gibson AD 7-4056.

1946 CUSTOM Deluxe Mercury 4-door sedan. In excellent condition. Like new, good tires, fine motor, with radio and signal lights. \$175 cash. Call Lee Layport AD 7-2016. Leave message.

GRADUATING—MUST sell 35 ft. 1955 Marlette Trailer—ready to occupy. Hilltop Park. Extras, reasonable. Card to P.O. Box 373, Boro.

HUGE SELECTION of portable radios and batteries. Expert radio, phono service. State College TV, 232 S. Allen.

FOR RENT
TWO DOUBLES, one single for summer seasons. Student entrance and bath. Parking available. Phone AD 8-6408.

3-ROOM APARTMENT with private bath. Sublet June through Sept. Price \$40 per month. Call Frank HO 6-6224.

APARTMENT, FURNISHED for summer months. Three large rooms and bath. Reasonable. Call Donald Buckbee, AD 8-8571.

ATTRACTIVE 3-ROOM furnished apartment 1 1/2 blocks from campus available for summer and fall, or summer alone. Call 230 South Frazier street.

SUMMER SESSION students attention! Comfortable rooms for rent at Pi Sigma Upsilon. One-half block from campus \$4 per week. Call AD 8-8151.

ROOM & BOARD
AT ALPHA ZETA fraternity inter-session and main summer session. Board on five day week basis. For information call Mrs. Alice Crandell. Phone AD 7-7621.

ROOMS FOR RENT
DOUBLE ROOM nicely furnished, male students only. 401 Keller Street. Call AD 8-8576.

GRADUATE STUDENTS and upperclassmen! The Colonial, 123 W. Nittany now looking for Fall semester. All rooms with running water or private bath. Quietly conducted for rest or study. Central location. Call AD 7-4850 or AD 7-7792. Ask for C.R.

LOST
GREEN SHAEFFER Pen in area of Pollock 8, Beaver St., or Nittany Ave. Reward. Call Charlotte Parsky 16 Simmons.

WILL THE person who got the wrong tan coat at Rec Hall, Friday night call Barb, 264 Simmons. I have yours.

WILL THE person who mistakenly took a beige colored girl's formal jacket Friday night at Phi Kappa call Frank Konchar at AD 8-9107. I have your jacket. Your cooperation will be appreciated.

A PAIR of brown rimmed glasses in vicinity of Theta Delta Chi. Call Tom Falkie AD 7-4402.

WILL PERSONS who took girl's and boy's tan raincoats with dorm keys No. 202 and 322 in pockets at Phi Sigma Kappa's Jam Session please call Don ext. 1198.

A PAIR of brown rimmed glasses in the vicinity of Alpha Sigma Phi. Reward. Call Ken Todd ext. 1196.

1 PAIR of plastic gold rimmed glasses on night of Carnival. Call Steve AD 7-2337.

1957 PENN STATE Class Ring with red stone and initials M.J.M. on inside. Will finder please call Mike Moyle ext. 1183.

PERSON WHO picked up Alligator raincoat at 213 Willard Friday May 4. Call Hugh AD 7-2411.

FOUND
BLUE CHECK book from Ellwood City Bank. Contact Bill Dunham AD 8-8360 and pay for this ad.

WANTED
WANTED SOMEONE to split moving costs of \$50 to Reading May 28th. Moving done by professional movers. Phone AD 7-7226.

WAITER FOR remainder of semester. Call AD 7-4151.

EXPERIENCED SECRETARY desires typing of theses, etc. Fast, accurate service. Reasonable rates. Phone AD 8-6943.

PASSENGERS WANTED
RIDERS WANTED points west to Nevada. Leave June 9th. Call Joe Haddad AD 8-9038.

MISCELLANEOUS
VACATION JOBS for men who rate high in appearance and aggressiveness. Pleasant daily contact with customers of established A-1 concerns. Public relations and advertising work. Many of these hired now will be invited to remain on part time or permanent work in Fall. Car furnished. \$95 weekly guaranteed for those qualifying. Contact University Placement Service. Interviews will be held from 9-12 Wednesday, May 16.

PIANO INSTRUCTOR: Experienced for beginners and advanced, children and adults. Phone AD 8-8693.

WHEN YOUR typewriter needs service just dial AD 7-2492 or bring machine to 633 W. College Ave.

IT'S HASSINGER for racket stringing the no-aw-way. Guaranteed satisfaction, prompt service. University Tennis Service, White Hall Storage Room. After 5 p.m. 514 E. Beaver Ave. Phone AD 7-2816.

Graduating Electronics & Mechanical Engineers...

How long will you be "Junior" in your job?

READ THIS CHECK LIST BEFORE MAKING A FINAL DECISION. IT MAY INCLUDE FACTORS YOU HAVE NOT CONSIDERED.

WILL MY STARTING SALARY BE

- Equal to industry standards?
- Better than industry standards?

Gilfillan starting salaries are higher than overall industry standards (averaging \$100 a month higher even in this competitive area). This is because, at Gilfillan, the individual's capacity develops more rapidly than under rigid corporation training systems. He is literally worth more from the start.

HOW RAPIDLY WILL I ADVANCE?

- At predetermined intervals, according to a rigid seniority system?
- As rapidly as my abilities warrant?

At Gilfillan, there is no "hierarchy" or seniority system. Individuals advance as rapidly as abilities develop. Salaries are reviewed at least twice a year.

WHAT WILL MY "STANDING" BE?

- Will I have to work at a board, punch a time clock, or be docked for time off?
- Will I have professional standing?

At Gilfillan, you do not punch a time clock. You work at a desk, in a professional atmosphere, and are subject to your own conscience when you need personal time off.

CAN I "CARRY THROUGH" ON MY OWN IDEAS?

- Up to a point, then senior engineers take over?
- All the way through to production?

At Gilfillan, a man with a sound idea is "given his head" and complete team project cooperation. An assigned technician reports directly to the engineer, for construction and wiring of circuits. The engineer carries full design responsibility

through production. Creative ability is recognized in overall advancement and specific rewards such as large bonuses for patents.

WILL MY FIRM BE THE RIGHT SIZE?

- Is it so large I could be lost in the shuffle?
- Is it so small that the work may not be pure engineering?
- Is the firm growing, so I can grow with it?

Gilfillan is neither a giant nor a small, limited company. Seven Gilfillan plants are located in Southern California, with Engineering Headquarters at Los Angeles. Gilfillan is large enough to handle all phases of research, design and development, yet not so large a man gets lost. The individual's growth is assured by the continuing Gilfillan expansion program.

WHAT WILL BE MY "FIELD" OF WORK?

- Will I be confined to one field or have opportunities in a diversity of fields?
- Will these include "tomorrow's" newest areas of electronics development?

Gilfillan is best known as the pioneer of GCA radar and all its major improvements, including the Gilfillan GCA Quadraradar—yet GCA is only one facet of Gilfillan activities. The firm has been engaged as a prime supplier of research, development and production of Military Electronics Systems since 1942, including Missile Guidance systems, airborne and ground; Electronic Countermeasures; Navigational Radar (GCA and AGCA); and Electronic Radar Trainers. Gilfillan is now concerned with many of today's newest, classified areas of electronics exploration and development.

CAN I IMPROVE MY PROFESSIONAL KNOWLEDGE AND STATUS?

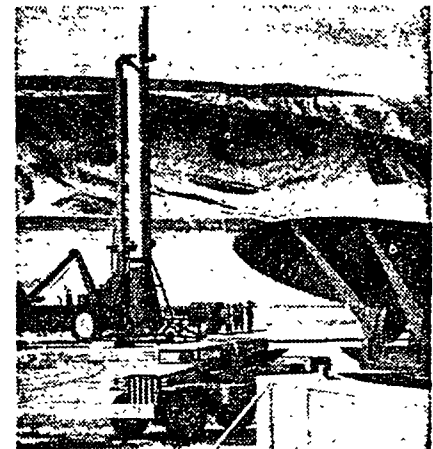
- Will tuition be paid by my firm?
- Will I be given aid in publishing technical articles?
- Will the experience of the entire engineering group be available to me?

Gilfillan pays tuition at universities or technical institutes. All possible aid is given in individual publishing of technical articles. Continuing symposiums make the total knowledge of the Gilfillan engineering staff available to the individual.

WHAT ABOUT THE STABILITY OF MY JOB?

- Does it depend on temporary big contracts?
- Is the firm a "war baby" type that may or may not be permanent?

Gilfillan has appointed new engineers every year since the firm was established in 1912. Current openings are in no sense emergency or temporary big contract jobs, but part of continuing Gilfillan expansion.



THE ARMY'S CORPORAL. Prime Contract for Basic Research and Development—Jet Propulsion Laboratory of California Institute of Technology. Prime Contracts for Development (improvement and simplification of ground and airborne electronics systems; and Production (ground guidance systems and airborne electronics) — Gilfillan. Gilfillan also holds Prime Contracts, many developmental, with the Air Force, Army Ordnance, Army Signal Corps, United States Navy, Royal Canadian Air Force, Royal Australian Air Force, South African Air Force and the French Government.

WHAT ABOUT MY JOB LOCATION?

- Is it in an area with few other electronics firms, so I might find myself in a backwater?
- Is it in the center of the industry, so there are many opportunities if I want to make a change?

Gilfillan Engineering Headquarters is in Los Angeles, now the center of the Electronics Industry, with more than 165 firms in operation. Among these, Gilfillan reputation is tops, broadening opportunity if the Gilfillan engineer should decide to go elsewhere. However, it is fair to say that, once acquainted with the firm's operation, Gilfillan engineers plan to stay permanently, because of superior opportunities for a comprehensive, remunerative, and secure lifetime career.

CAN I GET MORE GILFILLAN FACTS?

- By correspondence?
- Personally?

Both. Address specific inquiries to R. E. Bell, Gilfillan Bros., 1815 Venice Blvd., Los Angeles, Calif. An interview will be arranged. If you are in the Los Angeles area, telephone Mr. Bell at DU 1-3441.

Gilfillan
Los Angeles

PRIME CONTRACTORS FOR COMPLETE SYSTEMS
Electronic Countermeasures
Air Navigation Aids • Guided Missiles
Airborne Radar • Radar Trainers