

Undefeated Maryland Tops Lion Netmen, 7-2

A powerful Maryland tennis team, unbeaten in five contests this year, handed the Lion netmen their second loss of the season Saturday afternoon, 7-2, at Beaver field courts. The Terrapins, playing their fourth consecutive contest of the week, lost one singles and one doubles match.

Heading the singles men was Fred Trust, playing against Maryland's Dave Freishtat.

The first set of the match was a close, hard played contest, with both men making excellent saves and shots. However, Freishtat, the Terrapin ace, proved too experienced as he took the first, 8-6. In the second set, Trust alternated between very good and very bad shots while his opponent played a steady, hard driving game to win, 6-2, and wind up the match in two sets.

Number two man Ed Seiling, also dropped his match in two sets to Maryland's Carl Bucks, 6-4, 6-1.

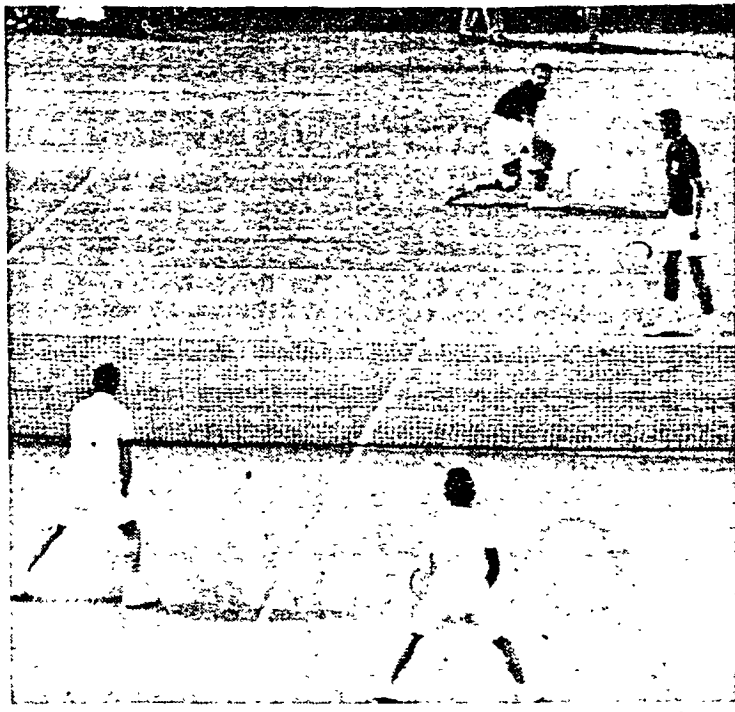
Christiansen Loses
The Nittanies' Captain, Chuck Christiansen, after splitting sets with Don Schweitzer, 6-1, 1-6, found himself crossed up at the net too many times by his smartly backhanding opponent and lost the deciding third set, 6-3.

Dean Mullen, the Lion's number four man, playing an aggressive and hard charging game against Jackson Yang, won his first set 6-2. After letting up in the second set, he couldn't find the right track again and lost the match 3-6, 1-6.

Adler Tops Terrapin
Maryland's Paul Eckles was another victim of a first set storm as he lost the opener to Al Williams, 7-5. Eckles came back to win the match in the next two sets 6-2, 6-2.

Penn State's first point was chalked up by Larry Adler over Carroll Campbell. Adler, playing a steady, long-court game outlasted his opponent to take the match, 8-6, 3-6, 6-3.

Trust and Mullen were a case of two good singles men who didn't click as a team when they



Dave Bavar photo

PENN STATE tennis player uses overhand smash to send the ball sailing back into Maryland territory. The Terrapins pinned the second defeat of the season on the Lions, 7-2.

dropped their doubles match to Terrapinmen Freishtat and Bucks, 6-2, 6-4.

Christiansen and Seiling ran afoul of Maryland's Schweitzer and Yang combination in three sets. After winning the first, the Nittany men found their lob shots

going wild and gradually tired to lose the next two and the match, 7-5 4-6, 3-6.

Joe Eberly and Dave Gruber added a point to the Lion score when they outplayed the Larry Lackley-Campbell combination, 6-1, 6-3.

'Parade of Crucials' Features IM V-Ball

Four deadlocks for league leadership were broken as the fraternity intramural volleyball tournament produced a "parade of crucials" Friday night at Recreation Hall.

Alpha Zeta, Delta Chi, and Theta Xi, of leagues A, B, and C, clinched at least ties for their league titles as the tournament drew toward its conclusion.

Alpha Zeta extended its record of five wins without a loss when it beat previously undefeated Theta Chi, 15-1, 15-2. League A is very unbalanced with only two teams playing better than .500 ball. On a combination of two Theta Chi victories and an Alpha Zeta loss could throw the final outcome into a draw.

Delta Theta Sigma Wins
Delta Theta Sigma evened its record at two and two with a forfeit win over Chi Phi in the other league A contest.

A similar situation exists in league C where Theta Xi can afford to lose its remaining game and still gain a tie for the title. Theta Xi handed Sigma Nu its first loss, 15-6, 15-4. Sigma Nu and Sigma Pi, each with 3-1 records, retain an outside chance to draw even with the leaders. Sigma Pi's third victory was gained by forfeit over Sigma Phi Alpha.

Delta Chi Leads League

Delta Sigma Lambda was awarded a forfeit win over Phi Kappa in a strictly "nothing" league C decision. League B's Delta Chi, defending champs, toppled Alpha Chi Rho from the unbeaten, 10-15, 15-9, 15-10. Delta Chi now rules the roost with Alpha Chi Rho as its only challenger. Zeta Beta Tau won its first game when eBaver House fell, 15-12, 15-8.

Beta Theta Pi pulled a half-game ahead of Delta Sigma Phi in league D when it defeated the latter, 15-3, 5-15, 15-3. The Delta Sigs, Kappa Sigma, and Phi Kappa Tau, all are within range of the D title. Phi Kappa Tau stayed alive with a 15-6, 15-10 win over Pi Kappa Alpha. In the other D

Grad's TV Drama Reported in Life

Burton Rowles Jr., a free lance motion picture writer-director and 1935 graduate of the University, saw his own sudden heart attack enacted on television two weeks ago, according to Life Magazine.

The dramatization was written by Rowles and Robert Wallace and performed on "Robert Montgomery Presents" (NBC-TV, Mondays).

Since graduating from the University, Rowles has worked for Transfilm, an advertising films company; the United Press; the Washington (D.C.) City News Service; the Clearfield Progress, and the Williamsport Grit.

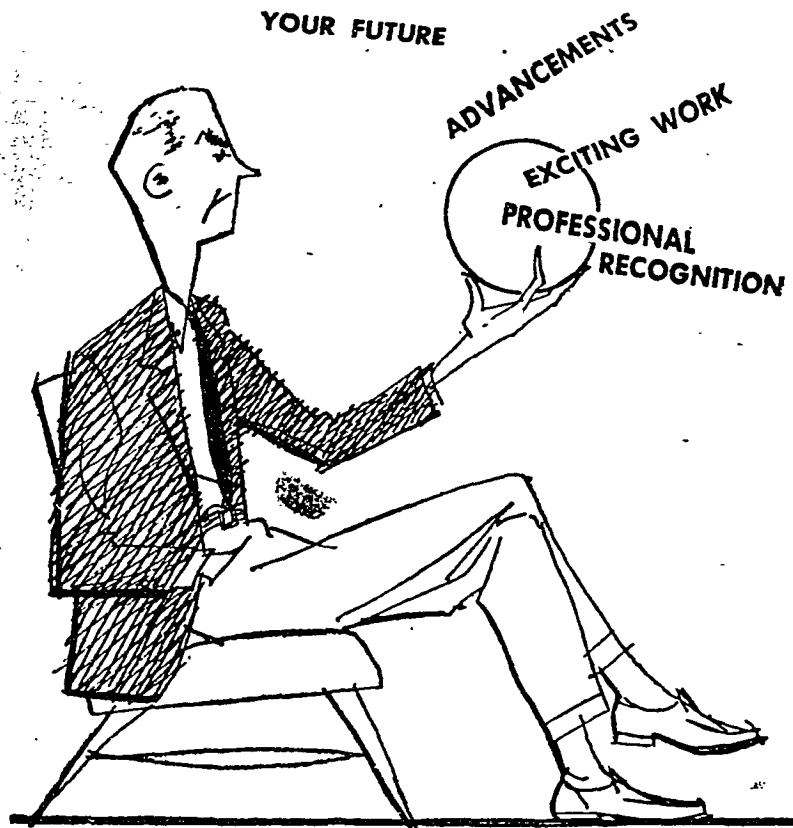
Arnold Air Society

Arnold Air Society will meet at 7:30 tonight at Delta Upsilon fraternity. Class "A" uniform is required.

game, Sigma Phi Epsilon squeezed past Acacia, 15-13, 14-16, 16-14.

Theta Delta Chi continued unbeaten in league E by overpowering Pi Kappa Phi, 15-0, 15-0. Alpha Chi Sigma remained just a half-game back by whipping Phi Epsilon Pi, 15-8, 15-5.

Regular league play will continue until Tuesday, May 1. Playoffs will begin May 2. Fraternities saw no action last night but will dominate play starting tonight. Starting times for volleyball matches are 7, 7:40, 8:20 and 9.



THIS IS ONE WAY TO LOOK FOR A CAREER, *But...*

You can't depend upon a crystal ball with your future at stake. Bell Aircraft has something tangible to offer ... a rewarding career with the engineering team which is recognized for its important contributions in aircraft, guided missiles, electronic systems and other diversified fields. Here are exciting assignments—demanding creative engineering and rewarding individual ability and initiative. Get the facts from our representative.

Your Bachelor Degree can earn career opportunities in these technical areas:—

ELECTRONIC ENGINEERS

ELECTRONICS
Guidance Systems
Instrumentation
Telemetry

SERVOMECHANISMS
Electronic Design
Analogue Simulation

TESTING
Missile Acceptance Testing
Test Equipment Design
• Flight-Test
Instrumentation
Installation
• Service & Training

MECHANICAL ENGINEERS

Rocket Development
Research Laboratories
Servomechanisms Hydraulic and Valve Development
Structural Test

MATHEMATICIANS and PHYSICISTS

Dynamics Analysis
Aerodynamics
Electronic Development
Servomechanisms Development
Rockets Research

To holders of a Master or PhD Degree, Bell offers exceptional opportunities in advanced research on a variety of projects.

Our representative will be on campus: —

April 23-24

P. O. BOX 1 **BELL** BUFFALO 5, N. Y.
Aircraft CORPORATION
or Address Inquiries to: Manager, Engineering Personnel