

# IBM Magic Aids Registration

By ED DUBBS

The tremendous task of registering over 12,000 students is made almost easy by IBM magic.

The "brains" of the International Business Machine Co. were located in a small corridor near the men's locker room in Recreation Hall during registration.

These machines, supervised by Harry A. Sperber, assistant scheduling officer, do everything except print the student directory, and they almost do that.

They count, assort, open new sections, and a hundred and one other things. And they operate at almost unbelievable speed.

### Master Card Is Key

The key to the entire registration process is the master card, the orange one numbered "1," received by students before entering the main floor of Rec Hall.

It contains all the vital information about the student—the matriculation number, sex, curriculum, and major.

As the student makes his rounds to schedule courses, he receives two number six cards for each course.

As he leaves Rec Hall, all the IBM cards are collected and rushed to the IBM's, with the master card on top.

### All Cards Punched

The cards are punched by a machine, placing all the information contained on the master card on every other card. The next step is to separate the cards—all the number three cards in one pile, number four cards in another pile.

After the separation process, another IBM machine takes over. This one checks to see that the machine which punched all the cards from the master card didn't slip up somewhere on its 100-students-a-minute operation.

Within two hours after the student handed in his cards, the pink number six cards are back at the registration tables where the students picked them up.

### Cards Determine Roll

The pink cards are then kept by the departments to determine the roll for the first class. The official roll, a printed sheet from the scheduling office, is not completed until sometime near mid-term.

The other cards go various places: the number one (master), two (official registration), three (statistical data), four (directory), five (selective service), and six (course cards) are kept on record in the scheduling office in the basement of Willard.

The number seven card goes to the files of Public Information, the University's official news bureau, and the number eight card, the office of either the dean of men or the dean of women. The ninth card, religious preference, goes to the University Chaplain.

### Two Extra Cards

Graduating seniors receive two other cards, numbers 10 and 11. The number ten card goes to the registrar, and the number 11 to the Alumni office.

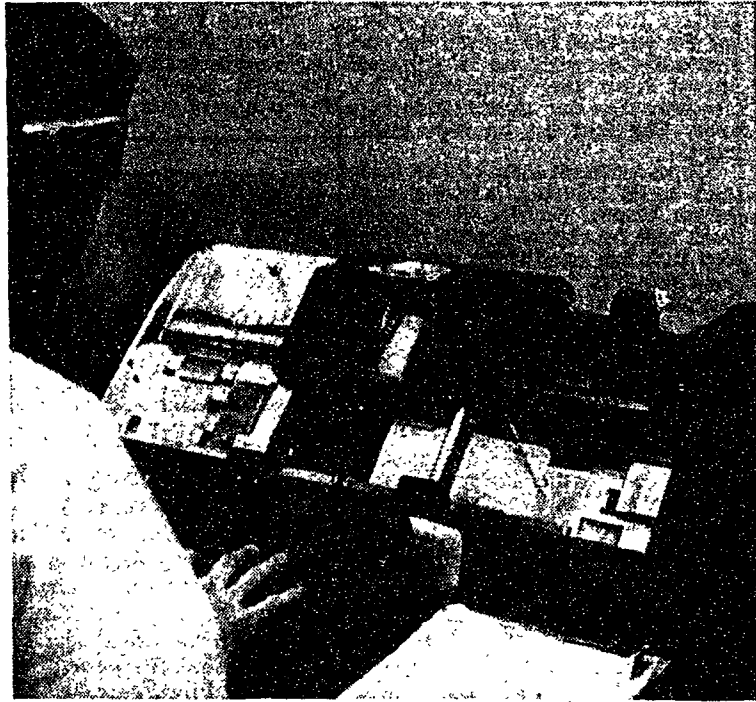
Almost as important as the master card in the IBM registration process is the student matriculation number. This number puts the student in an alphabetical grouping.

The IBM machines are rented from the International Business Machine Co.

### Farm Bureau Agency To Interview Seniors

The Pennsylvania Farm Bureau Cooperative Association will be on campus to interview seniors interested in employment on Wednesday and Thursday.

Those interested will meet at 7 tonight in 105 Forestry.



—Ron Walker photo

AN OPERATOR punches one of the many IBM machines found in Recreation Hall during registration. These rented "brains" make the task of registering over 12,000 students almost easy.

# UBA to Sell Books Until Noon Saturday

The Used Book Agency, student-run book exchange, will continue to sell books until noon Saturday.

Hours for the UBA, located on the basement floor of the Hetzel Union Building, will be 8:30 a.m. to 9 p.m. today and tomorrow and 8:30 a.m. to 5 p.m. Thursday and Friday.

Books for Business Administration and Engineering courses and History and Literature books are selling the fastest, according to John Knaff, UBA manager. Books for these courses will continue to be accepted this week. However, yesterday was the last day other books were accepted.

Starting tomorrow books purchased at the UBA which are no longer in use or in any other way unacceptable for a particular course may be returned and refunded.

The UBA will return money for those books that have been sold and return the unsold books beginning February 20.

A 20-cent handling charge is made for books sold and also for books bought. There is no charge for books selling for 50 cents or less.

Knaf said that books "are moving well and perhaps better than last semester." The total number of books sold by the UBA cannot be printed because of complaints from downtown book sellers, he added.

Last semester the UBA sold 2000 books on the first day, setting a new record of first day's sales. This was double the number of books sold on the first day the semester before.

The Book Exchange, sister or-

# Agriculture Building Name Is Changed To Armsby Hall

The Agriculture Building was recently renamed Armsby Hall in honor of the late Dr. Henry Prentiss Armsby, who served at the University from 1887 to 1921.

The building, which was constructed in 1907, provides facilities for the Office of the Dean, the director of the Agricultural Experiment Station, the department of animal nutrition, and other departments.

Included as a unit of the building is the calorimeter building, constructed in 1902 by Dr. Armsby to house his world-famous respiration calorimeter.

Dr. Armsby served as director of the Agricultural Experiment Station from 1887 to 1907; as dean of the College of Agriculture from 1900 to 1904; and as director of the Institute of Animal Nutrition, now the department of animal nutrition, from 1907 to 1921.

Organization to the UBA, has also been swamped with customers. The BX carries everyday school needs, including notebooks, paper, and pencils.

# 236 Coeds Register For Formal Rushing

Two hundred thirty-six coeds have officially registered for formal sorority rushing, according to Jeanne Lindaman, assistant to the dean of women in charge of Panhellenic affairs.

Miss Lindaman will be available at the Panhellenic post office in Womens' Building to answer rushees' questions.

For the formal rush program last fall, 424 women were registered. At the end of the two-week rush period, 67 per cent were ribboned, the highest percentage of ribbonees during any rushing period.

The drop in registration, Miss Lindaman said, is probably due to the new average required for rushing. Second semester women must have a 2.3 All-University average, while upperclass women must have a 2.0.

This is the first year freshmen have been allowed to rush, she added, and they may feel that they are not yet ready to join a sorority.

Rushees will continue to attend informal coke dates in sorority suites from 1 to 5 p.m. today and from 6:30 to 8 tonight. Invitations were picked up yesterday morning at the Panhel post office, and rushees scheduled coke dates from 2 to 5 p.m. and from 6:30 to 8 p.m. yesterday.

Tomorrow rushees will pick up

invitations for Wednesday and Thursday, and return them to Panhel post office in the afternoon.

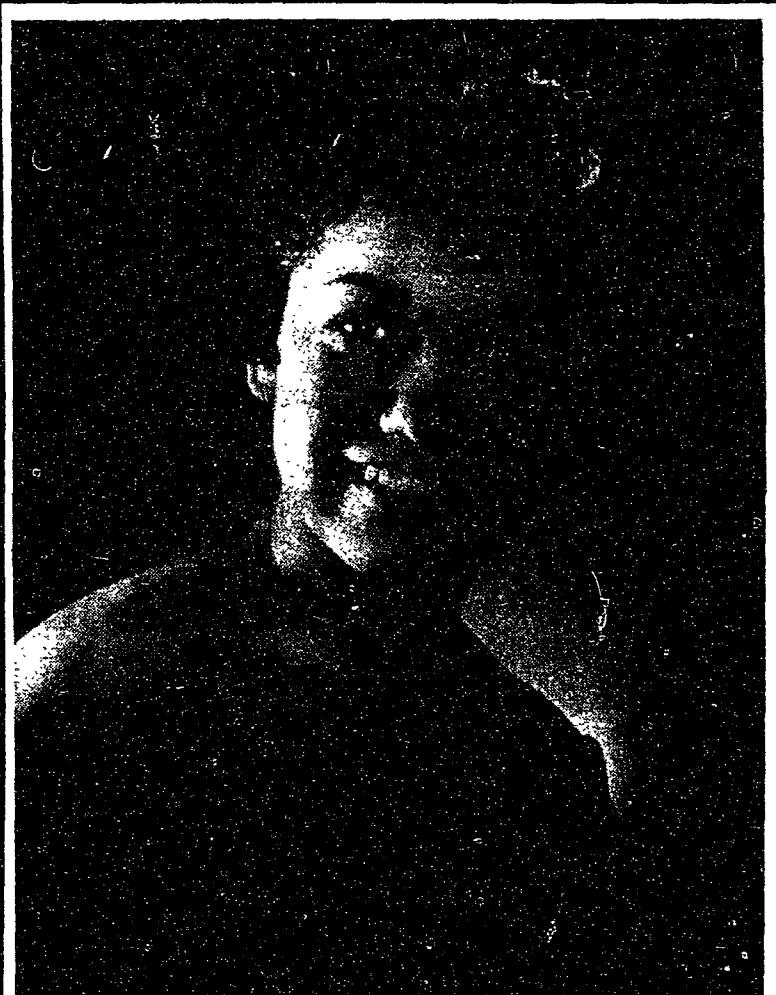
Rushees may spend about an hour in each suite, if they have enough free hours. No refreshments are served at coke dates.

No rushing will be held Friday or Saturday. A Bermuda Party, by invitation only, will be held in all suites from 1:30 to 5:15 p.m. Sunday.

The Panhel rushing booklet emphasizes that each rushee should answer every invitation she receives. If the sorority does not receive an answer, it does not know if the girl has received her invitation.

### \$1000 Grant Given

A grant of \$1000 from the Perfect Circle Corp., of Hagerstown, Ind., has been presented to the University. The money will be used in support of the Motor Fleet Supervision Training program conducted by the Institute of Public Safety.



MISS BUNNY SCHENK

OK Joe?

### Bermuda Bound!!

This June some lucky co-ed will find herself cruising at 360 m.p.h on a luxurious B.O.A.C. sky giant. She'll be headed for an all expense paid vacation in Bermuda, with our compliments.

### Who Will It Be??

A team of judges will make the selection from the girls who were picked to be our OK Joe girls (our weekly ad) and any girl whose name was mentioned in this column. This might be a girl who we may have noticed while photographing a Saturday night party, or some co-ed we photographed at the studio. Judges will interview the girls in person. This will include all ads from this past October to this May.

### Goodbye Ruth!!

Ruth Mendelson, our faithful "Girl Friday" has left us for N.Y.C. She bids a fond adieu to the many student friends she met up here for the past 3 years. Marty Field, a beautiful Pottstownner will replace her.

### Parties??

Due to other commitments, we'll be shooting fewer parties this semester, so best make your reservations a few weeks in advance.

### Too Late??

Yes, it's too late for a Valentine portrait unless we already have your negative in our files. In other words you still have time to have a re-order made.

Sincerely,  
b.c.

bill coleman's lion studio

136 E. College Ave.

# PENN STATE JAZZ CLUB

Presents . . .

J. J. Johnson &  
Kai Winding Quintet

Schwab Auditorium

FRIDAY, FEBRUARY 10

8:30 p.m.

Tickets—\$1.00

On Sale at HUB Wednesday