

Penn State Sports—

# ON the LINE

By ROY WILLIAMS  
Sports Editor



### RUTGER'S POST MORTEMS . . .

According to radio broadcaster Tony Merino, working over WCTC in New Jersey, Rutgers played its best game of the year when it lost to the Lions Saturday, 34-13.

Merino, who has followed the Scarlet through five losses and two wins, told us it was the first time he had seen quarterback Bill Gatyas play the option and pitchout so well, and that it was the first time the Scarlet had had any success whatsoever with the gamble to halfbacks Bob Lusardi and Bob Laverty.

Rutgers, like Penn, is looking to 1956 with hopes of tucking the dismal '55 season into the record books to be forgotten. Fighting a losing cause, Coach Harvey Harman used 16 of his 19 sophomores and 14 of his 15 juniors. Only five men on the roster failed to play. The other was first-string guard Bob Howard, out with a shoulder injury.

### RUTGER'S FIELD . . .

We were impressed with (1) Rutgers' field, (2) the hospitality, and (3) the efficiency of sports PI head Les Unger. Scarlet's field, bathed in a warm, November sun Saturday, holds 23,000, but only 12,000 showed up for the test. It's a horseshoe shaped field, set in a natural ravine, rimmed by pines. Although the field is horseshoe-shaped, the curve of the horseshoe is broken by planting areas that are crammed with hawthorne roses.

Before the game Unger held a press luncheon. If he'd called it a banquet he would have been more correct. Four different kinds of pie, roast beef—rare, medium, and well-done, none—the-least-coffee, potato salad, cheeses, cake, cold cuts, tea, etc., spotted the "menu." The only thing that fished was a log fire that failed to burn.

The press box—it's the best we've been in in five road trips—had two radio booths. Each were carpeted and had drapes hanging from the windows.

Bob Prince, Penn State broadcaster, said he came to Rutgers' eight years ago for a game that was to be played in sub-zero weather. "I came equipped with boots, heavy coats, overshoes, and thermos jug," Prince explained. "It took me fifteen minutes to haul the stuff in from the car, and then I walked into this radio room—with carpets and all. I thought I was in New York's CBS at first."

Coach Rip Engle practically cleared his bench Saturday. It looked as though the gray Eagle was sending in two definite line-ups for his front wall, perhaps experimenting for the all-important, up-coming Pitt test here Saturday.

Engle, however, did not use his quarterbacks Al Jacks, and Jack Scrabis, who have all but faded into obscurity this year in riding the bench for eight games. Both sophomores were considered, at the outset of the season, as possibly figuring in the quarterback work.

No one expected them to be first string signal callers with Milt Plum, Bob Hoffman, and Jim Hochberg vying for the job, but it was expected that they'd be seen in action. Bill Wehmer, 201-pound tackle who stands 6-3, reportedly a football player in his own right, has made the trips but not yet seen action. He's also a sophomore.

## 'Big 3' Stay On Top; Pitt Ranked 15th

By THE ASSOCIATED PRESS

Oklahoma, Maryland, and Michigan State still are running 1-2-3 in the Associated Press' football poll and figure to stay up there after Saturday's play. There could be plenty of changes, however, in the ratings below the top trio.

Oklahoma is a 26-point favorite to beat Nebraska for the Big Seven crown at Lincoln and run its victory streak to 28. Maryland is the 27-point choice over George Washington, and Michigan State, hoping to move into the Rose Bowl, is about the same over Marquette.

Notre Dame, fourth in the rankings, fifth place UCLA, and sixth place Michigan, run into trouble. All could lose without causing any shock to the onlookers.

**Irish Get Nod**  
The Fighting Irish are rated 10 points over Iowa but the Hawkeyes always spell aggravation to the men from South Ben. UCLA is a 10-point choice over Southern California in the big battle on the coast where the Bruins are aiming to seal a berth in the Rose Bowl.

Michigan is given just a six-point edge over Ohio State at Ann Arbor. The Big Ten crown as well as the Rose Bowl spot is at stake in this climactic contest.

**DUS Win Important**  
A victory by Ohio State would send Michigan State to Pasadena since the Buckeyes are ineligible to repeat their 1955 journey to the Rose Bowl.

Texas Christian is ranked seventh followed by Texas A&M, Ohio State and Georgia Tech. The Aggies and Georgia Tech are idle Saturday while TCU, aiming for the Cotton Bowl, is favored by 19 over Rice.

The second 10 in order: Navy, Auburn, West Virginia, Mississippi, Pittsburgh, Miami Ohio, Tennessee, Stanford, Oregon State and Duke.

### Outing Club to Hold 2d Cabin Party Saturday

The Penn State Outing Club will hold its second overnight cabin party this weekend at the ski cabin. Gordon McCartney, president, has announced.

The group will leave from Old Main at 8 p.m. Saturday.

People interested must sign up at the Hetzel Union desk before noon Friday. All women will be permitted overnight permissions, McCartney said.

McCartney asked those who have blankets or sleeping bags to bring them if they attend the party.

## Tatum—Not Team—Fumbles This Time

COLLEGE PARK, Md., Nov. 15 (AP)—Maryland was voted into Miami's Orange Bowl football game today but if Jim Tatum's Terps fumble the ball around like he did the announcement they'll never beat Oklahoma.

Oklahoma is No. 1 in the weekly Associated Press poll to determine the nation's best college football team. Maryland is No. 2. On paper, it promises to be the best of the bowl games on Nov. 2.

## 9 Teams Open Cage Season With Victories

Eighteen fraternity basketball teams inaugurated their cage seasons Monday night at Recreation Hall. In the first game Alpha Chi Rho, behind the 12-point barrage of Paul Christman, walloped Alpha Phi Delta, 27-5.

Phi Kappa Psi stopped Zeta Beta Tau, 16-10, with Bill Bilyak pumping eight through the hoop for the winners. Julian Falk led ZBT, scoring eight.

Tau Kappa Epsilon defeated Lambda Chi Alpha, 24-8, as Joe Eberly equalled the entire Lambda Chi Alpha output to lead the scorers with eight points.

Delta Upsilon and Alpha Phi Alpha battled to the highest score of the evening with Alpha Phi Alpha winning, 32-22. Alpha Phi Alpha's Thomas was high scorer for the winners with 16 points. Sigma Alpha Epsilon beat Phi Sigma Kappa, 26-18. Russ Mandeville led the winners with eight, but Walt Stevenson of Phi Sigma Kappa was the game's top scorer with nine points.

Led by Bill Stoddard, Phi Delta Theta defeated Alpha Zeta, 30-15. Stoddard was the high scorer for the evening with his 17 markers. Alpha Sigma Phi won out over Theta Delta Chi, 25-11. Harry Brown led the winners with six.

In the closest game of the night, Theta Xi eked out a 25-23 overtime win over Sigma Phi Alpha. Jim Machlan and Gordon Kreiger split 16 points for Theta Xi. John Forrest led the losers with seven.

In the final game Sigma Pi edged Alpha Epsilon Pi, 17-16.

Tatum has been itching for another shot at the Sooners and Bud Wilkinson, who was his assistant before he moved from Oklahoma to Maryland in 1947 and since has compiled a better record than his old boss.

The votes were being rounded up in a poll of Atlantic Coast Conference schools on its Orange Bowl designate when Tatum went into his weekly conference with sports writers today.

Maryland, he was happy to say, had been unanimously selected to represent the conference in the bowl. He signalled Joe Blair, his publicity man, to make the formal announcement.

"Maryland has accepted the invitation to the Orange Bowl," Blair announced. "I didn't say that," said Tatum. "I said 'Selected.'"

"We haven't accepted yet." He explained the final decision was up to the university's administration. He said he did not want what he said to mean Maryland would not accept. He said it was apparent Maryland's athletic council was in favor.

At the same time, Jim Weaver, commissioner of the conference, announced from his office at Greensboro, N.C., that Maryland had been selected and had accepted.

Tatum's "We haven't accepted yet," took Weaver aback.

"I talked with Tatum and Dean Geary F. Eppley, Maryland faculty athletic chairman," said Weaver. "and I most definitely got the impression that they had accepted the invitation."

Tatum owned up then. Maryland had accepted. He said he'd done the shadow boxing with words because there was a prior agreement Weaver would announce the acceptance.

## Thompson to Play Atherton for Title

Thompson edged Delta Gamma, Tri-Sigma, and Kappa Kappa Gamma 1-0 in the intramural field hockey playoffs last night. Thompson will play undefeated Atherton for the championship title tomorrow.

The sorority goalie Carolyn Briggs was the defensive stand-out of the night as she came out of the cage three times to block sure-score shots. Wing June Stein knocked in the deciding tally for Thompson.

In the first night of playoffs in the coed IM badminton league, Delta Zeta beat Pi Beta Phi, 2-0; Alpha Gamma Delta blanked Co-ops, 3-0; and Tri-Sigma won over Delta Gamma, 2-1.

## For your THANKSGIVING HOLIDAY



### Head For These HILTON HOTELS and SPECIAL STUDENT RATES

in NEW YORK WASHINGTON—BOSTON BUFFALO—HARTFORD

**HOTEL NEW YORKER**  
NEW YORK  
1 in a room \$5.50  
2 in a room \$4.50  
3 in a room \$3.50  
4 in a room \$3.00

**ROOSEVELT and STATLER**  
NEW YORK  
**MAYFLOWER and STATLER**  
WASHINGTON, D. C.  
**STATLER HOTELS IN**  
BUFFALO, BOSTON, HARTFORD  
1 in a room \$6.50  
2 in a room \$5.50  
3 in a room \$4.50  
4 in a room \$4.00

**WALDORF-ASTORIA and PLAZA, NEW YORK**  
1 in a room \$8.00  
2 in a room \$6.50  
3 in a room \$5.50  
4 in a room \$5.00\*

\*The Waldorf has no 4 in a room accommodations. All hotel rooms with bath.

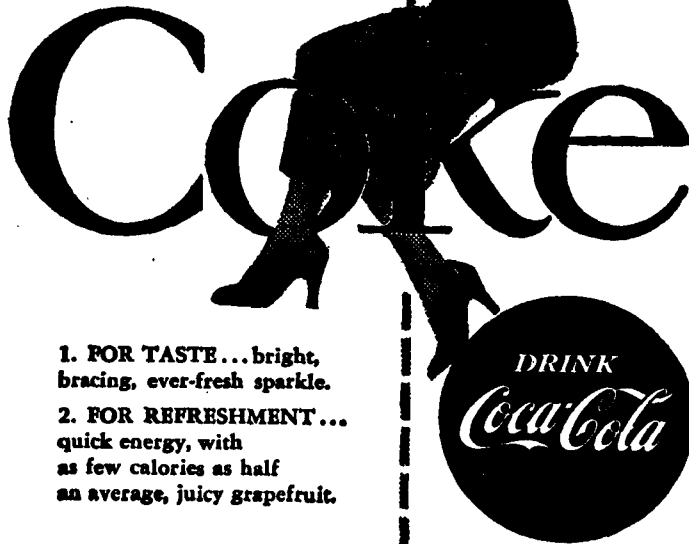
**CAMPUS REPRESENTATIVE**  
John Heinze, Phi Kappa Psi

For reservations, contact Campus Representative or Student Relations Representative at the hotel of your choice.

For information on faculty and group rates, contact campus representative.

*Hilton Hotels*  
Conrad N. Hilton, President

50 million times a day at home, at work or on the way There's nothing like a



- 1. FOR TASTE... bright, bracing, ever-fresh sparkle.
- 2. FOR REFRESHMENT... quick energy, with as few calories as half an average, juicy grapefruit.



BOTTLED UNDER AUTHORITY OF THE COCA-COLA COMPANY BY ALTOONA COCA-COLA BOTTLING COMPANY

"Coke" is a registered trade-mark. © 1955, THE COCA-COLA COMPANY

## NEW COLLEGE DINER

Good Food  
Attractive Prices  
Conveniently Located