

'Mikado'—



—Photo by Bavar

NANKI POO, enacted by John Cox, sings his tale of woe during the first act of 'The Mikado' on stage tonight in Schwab Auditorium.

Drama

'Mikado' Will Open Tonight in Schwab

The opening of "The Mikado" at 8 tonight in Schwab Auditorium will mark the first time that Players has presented a musical.

The three-night run will also be the first time that Players has presented a show with the department of music and the division of dramatics. However, the group has worked with the dramatics division in the past.

5 Coeds Enter 'Prix De Paris' Fashion Contest

Five coeds will represent the University in Vogue magazine's 26th annual "Prix De Paris" fashion contest.

The representatives are Barbara Edwards, senior in home economics from Havertown; Nancy Woodward, senior in education from Pottsville; Janet Magavich, senior in business administration from Hazleton; Ann Lederman, senior in journalism from Glenside; and Ileana Wolfgang, senior in journalism from Scranton.

Sponsored Annually

The "Prix De Paris" is an annual contest open to college senior women interested in fashion, writing, advertising, merchandising, decorating or publishing careers. The first prize in the contest is \$1000 in cash or two weeks in Paris. The second place winner receives \$500 and the ten honorable mention winners receive \$25 each.

Receive Consideration

These top winners also receive top consideration for jobs on Vogue and other Conde Nast Publications. The next 50 top ranking contestants are recommended to stores, advertising agencies and other publications.

The entrants are required to answer two quizzes. Those who pass the quizzes are eligible to submit a 1500 word thesis for the final awards. Contest winners will be notified in May.

Brown Named Recipient Of Home Ec Award

Myrtle L. Brown, graduate student in home economics, is the 1955 recipient of the Mary Swartz-Rose Fellowship.

The award, given for graduate study in nutrition or allied fields, was announced at the banquet which closed the 38th meeting of the American Dietetic Association in St. Louis, Mo.

Leonides To Set Up Aid Fund

Leonides, independent women's organization, voted Monday night to establish a scholarship fund which would be administered on the basis of need to eligible independent women.

No amount was officially designated. The group plans to build up the fund by work weeks or money-raising projects in which independent women could participate.

Rosetta Kearney, Doris Wenger, Judith Berman, and Kay Leitzinger were appointed to a committee to screen applicants for the scholarship.

Judith Pendleton, Leonides president, announced that 63 volunteer independents have been asked to participate in Band Day. One woman and one member of the Blue Band will be assigned to each visiting band to answer questions and assist high school bandmen from 9 a.m. to 11 a.m. Saturday.

The Leonides entry in the Mardi Gras festival will feature a jack-in-the-box booth with a modernistic theme.

Leonides, Panhellenic Council, the Association of Independent Men, and Interfraternity Council will sponsor a Gridiron Ball from 9 p.m. to midnight, Nov. 19, in the Hetzel Union ballroom. Johnny Nicolosi and his orchestra will furnish music for the informal dance.

LA Student Council Will Support NSA At Cabinet Tonight

The Liberal Arts Student Council has voted in favor of continuing membership in the National Student Association.

Louis Adler, council president, will support NSA when it is brought before All-University Cabinet tonight.

Helena Morais, election committee chairman, reported that 36 per cent of the freshmen voted in the elections held last week. The four freshman representatives are Saul Bernstein, arts and letters major from Elkins Park; Lee Cohen, journalism major from Mount Penn; Richard Friedman, arts and letters major from Harrisburg; and Mary Peters, arts and letters major from Fogelsville.

The council decided against having a student-faculty mixer this semester because it was too late in the season, but passed a motion to hold one at the beginning of next semester.

International Relations

The International Relations Club will meet at 7:30 tonight in the Hetzel Union auditorium. A panel discussion on German unification will be held.

WSGA Votes to Give Endorsement to NSA

Women's Student Government Association last night voted to give full support to the controversial National Student Association.

The question of NSA, a confederation of colleges and universities for discussion of common problems and to give students a voice in national and international affairs, will be discussed at Cabinet tonight.

The chief opposition to the organization came from Martha Fleming, junior senator and a delegate to the national NSA convention last summer, who said that although she is definitely in favor of the organization and the benefits it could give Penn State she feels that "Penn State is not ready for it yet."

Miss Fleming suggested that Cabinet table the motion until spring and during that time Penn State could become an active observer in the organization.

"During the period of active observation we would be able to set up our working organization on campus and would receive the benefits of NSA except that we would not have voting power," she said.

A working program Miss Fleming explained would consist of four main committees—campus, regional, national, and international. These committees would then discuss affairs in their category, and correspond with other college committees of the same type.

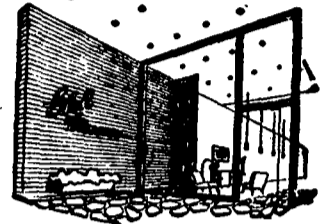
Miss Fleming felt that more education of the student body was needed before the program could succeed and that by an observation period we could "wait and see rather than accepting blindly and then falling by the wayside."

Patricia Douthett, chairman of judicial, said she thought that much of the opposition being raised against NSA was because of the cost to the student body. She felt that this should not be the major consideration and that in her opinion we "should definitely join and stop sitting around doing nothing."

Norma Talarico, representative from Leonides, said that she thought before Penn State joined NSA the organization should be "cleaned up" on a regional basis.

As it now stands with so many small schools in our region and none of our size, we are helping them without aiding ourselves, she said.

WSGA also voted to give freshman women their choice of a one o'clock and 12 o'clock permission this weekend. Upperclass women will receive a two o'clock Friday night, and a one o'clock Saturday night.



thru the Looking Glass

By Gabbi

Shades of Simmons (keep 'em down) it's been another tre's gais week-end and another looming up. Methinks I can make much mad money selling toothpicks for droopy lids—now that's an eye-opener! Speaking of being on the ball (we weren't but who needs continuity) you cannot consider yourself as such until you've been to ETHELS.

We're bugs for beetles

Once you've gotten past that rust couch in the window and tucked those house beautiful dreams away—you'll enjoy the costume jewelry that breathes of good taste. Particularly pretty are the tiny scarab (those are beetles) watch bands in gold and silver that do more for your watch than Lewis does for Martin. You won't even notice your minute hand is missing—puts the timepiece right in the bracelet bracket—all for \$8.50!! And if you've a pet stone in your scarab bracelet, spotlight it and choose matching earrings—buton or drop—these are \$7.70. And if Santa hasn't brought you a scarab bracelet yet, ETHELS has them too—from \$9 to \$40—so go on, look cosmopolitan.

Did you say

bright eyes?

mebbe so, but Eisenberg Ice is a quick runner-up. "Glowing with heady fire"—(no wonder nobody but us advertisers read ads). They make the newest rhinestone pins and earrings. There are other makes too, in bracelets, to sparkle and gleam like that engagement ring (someone else is wearing). Pearl, silver and gold—ETHEL'S has them all to touch off that prom picture you're painting! Priced from \$2 up.

Get rid of that old bag

And we don't mean your date (to each his own) but ETHEL'S has the handiest and handsomest, for toting (you can stop using his pockets). Tiny (they're not that tiny) evening purses with a snap lock in many shades of velvet, satin, white brocade, black faille—So perfect for those few essentials—only \$2.15. In flannel you'll find a smaller version of the miser's purse with a built-in pocket for glasses (eye, that is!) Stop in today, cause Gabbi says they're great!

Ethel's

112 E. COLLEGE AVE.
STATE COLLEGE, PA.

Make Your Big Weekend Complete

THE RAINMAKER

Friday and Saturday
Nov. 4 and 5
Center Stage at 8

Top off your Junior Prom date with dinner or supper in the Early American candlelight atmosphere of

LA GALERIA

SPECIAL HOURS FOR JUNIOR PROM

FRIDAY: Dinner 5:00-9:00 Supper 9:00-1:45

SATURDAY: Luncheon 11:00-1:00
Dinner 5:00-9:00 Supper 9:00-12:45

SUNDAY: Breakfast 9:00-12:00
Dinner 12:00-8:00

LA GALERIA

Try our charcoal broiled steaks, chops, seafood, or Italian Cuisine

233 E. Beaver Ave. State College

B.A. is on the way...
Watch Page 3