

# Four Teams Win in IM Grid Games

By DAVE BRONSTEIN

Alpha Chi Sigma's Fred Miller broke loose on a 48-yard scamper mid-way in the last half and scored the winning touchdown as the Sigma football team topped stubborn Kappa Delta Rho, 7 to 0.

Miller's dash to victory highlighted a four-game slate of intramural action last night under the Beaver Field practice area lights.

Scores in the three remaining games were:

- Faris 16, McKee 0
- Alpha Epsilon Pi 1, Sigma Alpha Epsilon 0
- Phi Gamma Delta 7, Acacia 0

KDR threatened late in the game when Pat Riley bullet-passed to Dan Markley for 25 yards and a first down. Two running plays gained 15 yards. A pass intended for the tying score went wild and Joe Nock picked it off for Alpha Chi Sigma.

Gary Crothers, who caught two passes, was the standout for KDR. For the Sigmas, Lynn Boyer made two key runs and Gus Gerhart booted the extra point.

The Faris completely dominated their game against the undermanned McKee representatives, 16-0.

Tony Conde scored the game's first TD on a 25-yard pass from Jay Berkurt. Tom Fridy skipped over for the second Faris' score. Sandwiched between the two touchdowns was a safety.

Gerry Cornell displayed what punch McKee had with his long looping passes.

Alpha Epsilon Pi raced up and down the field against Sigma Alpha Epsilon but were thwarted when it counted most. The final decision went to AEPi on first downs, two to one.

Jack Shoenberger passed to Steve Meisel for the first AEPi first down. With three minutes remaining in the contest, Shoenberger caught a pass from Herb Aboff for the second first down.

Dick James, on the game's final play, caught a pass, good for a first down, on the AEPi six-yard line.

Phi Gamma Delta topped Acacia, 7-0, on a first period scoring play. Chuck Christiansen dropped a one-yard pass to Don Ferguson for the TD. The play was set-up on passes to Frank McFaden and John Lessig.

# Out On a Limb

	Williams (.720)	Gatehouse (.840)	Fanucci (.888)	Coaches (.888)
Miami-Pitt	Pitt	Pitt	Pitt	Pitt
Purdue-Illinois	Ill.	Purdue	Ill.	Purdue
Syracuse-H. Cross	Syracuse	Syracuse	Syracuse	Syracuse
Notre Dame-Navy	Navy	ND	ND	Navy
Mich. St.-Wis.	Wis.	Mich. St.	Mich. St.	Wis.
Ga. Tech-Duke	Duke	Ga. Tech	Duke	Ga. Tech
TCU-Baylor	TCU	TCU	TCU	TCU
SMU-Texas	SMU	SMU	SMU	SMU
Kentucky-Rice	Rice	Kentucky	Rice	Kentucky
Mich.-Iowa	Mich.	Mich.	Mich.	Mich.
Clemson-W. Forest	Clemson	Clemson	Clemson	Clemson
Ga.-Ala.	Ga.	Ga.	Ga.	Ga.
Texas A&M-Ark.	Texas A&M	Texas A&M	Texas A&M	Texas A&M
So. Cal.-Minn.	So. Cal.	So. Cal.	So. Cal.	So. Cal.
Army-Colgate	Army	Army	Army	Army

## Intramural Conference

Eugene Bischoff, professor of physical education and Dr. Mildred Lucey, associate professor of physical education, will be among the 90 delegates attending the First National Conference on Intramural Sports, to be held in Washington, D.C.

The conference will begin Sunday and continue through Wednesday.

## Band Day Nov. 5

Band Day, now in its sixth year, will attract 63 high school bands to Beaver Field for the Penn State-Syracuse football game Saturday, Nov. 5. Weather intervened only once, in 1953, when a 12-inch snowstorm ruled out the half-time show. There'll be 4,514 bandmen in this year's routine.

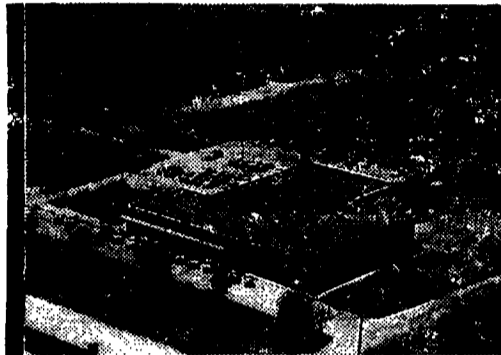
# NEW COLLEGE DINER

For Your Favorite SEAFOOD  
DELICIOUS BURGERS  
EXCELLENT COFFEE

*Between the Momes*

# What's doing

at Pratt & Whitney Aircraft



Working engineers of P & W A meeting for classes in 1955. The P & W A graduate center houses: Aeronautical Engineering, Physics, Mathematics, Nuclear Technology, Management Training.

There's something unique in education.

Near the Pratt & Whitney Aircraft plant in East Hartford, Conn., a full-fledged graduate center was established this fall by Rensselaer Polytechnic Institute. Located 115 miles from R.P.I.'s home campus in upper New York State, the new graduate facilities will enable working engineers from Pratt & Whitney Aircraft and other companies in the Hartford area to continue their studies. Without interrupting normal employment, it will be possible for students to obtain advanced degrees in specialized fields from the nation's oldest engineering college.

Designed to raise the level of knowledge and to broaden the base from which advanced research can be approached, this entire program will simultaneously lead enrolled engineers to greater achievement in their careers.

### BULLETIN

Clark Griffith, president of the Washington baseball team, died at 8:40 p.m. last night.

## Smith's barber shop



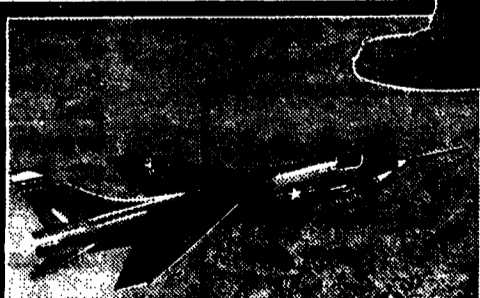
VOILA!

Stop in and tell us how you like my new costume

210 S. Allen



First 702 Computer in East. Just installed, this advanced I.B.M. computer joins earlier electronic marvels that played a vital role in the development of Pratt & Whitney Aircraft's famed J-57 jet engine.



Newest Supersonic Fighter. The Chance Vought F8U, latest in a growing group of military aircraft to fly faster than sound. Like most other record-breakers, it is powered by a P & W A J-57 turbojet.



Last Wasp Major, most powerful piston engine ever developed, is shipped by P & W A. This marks the end of an era as turbojets take over as the source of power for heavy bombers, transports and tankers.

## PRATT & WHITNEY AIRCRAFT

DIVISION OF UNITED AIRCRAFT CORPORATION • EAST HARTFORD 2, CONNECTICUT

World's foremost designer and builder of aircraft engines