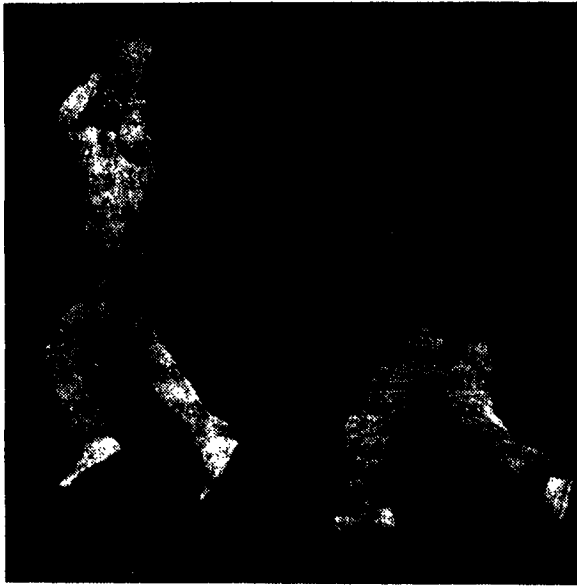


Indie, Fraternity Action



—Photo by Bavar
BUD SEIFERT, Dorm 22, catches a pass in the first half of the game with Dorm 11, but the play was called back because of a penalty. Chasing him is George Goldstein.



—Photo by Bretts.
DAVE MURPHY, Alpha Sigma Phi, runs out of bounds on his opponents' 15-yard line. Bob Williams, Theta Delta Chi, speeds downfield after him.

Four Score Shutout Wins in IM Football

By DAVE BRONSTEIN

Four shutouts and the first successful extra point attempt from placement in 'modern' intramural history highlighted IM football action last night on the Beaver Field practice grounds.

The four teams moving into the second round of tournament play are Alpha Sigma Phi, Dorm 11, Dorm 22, and Alpha Gamma Rho.

Alpha Sigma Phi scored only one touchdown in the 30 minutes of fast-moving play, but that lone score held until the final horn as the Alpha Sig's topped Theta Delta Chi, 6 to 0.

The one tally came after a dazzling display of passing and ball-handling on the part of a tricky Alpha Sigma Phi backfield.

Winners Use Pass

The winners advanced the ball deep into Theta Delta Chi territory on a three-way pass, starting with Don Ferguson and going to Dave Murphy to Tom Armstrong. Two plays later the ball was moved to the three-yard line by an end skirt and a head-on charge.

With four minutes remaining in the first half, and the ball on the three, Dave Murphy stepped back and lobbed an easy pass to Harry Brown who had just enough room to step over for the touchdown.

First Half Threat

The main threat in the first half by Theta Delta Chi ended after a first down pass from John Wagner to Dick Kuhn brought the ball to the 45-yard-line of the Alpha Sigs.

A touchdown by Theta Delta Chi was called back in the second half when a linesman was called off-sides. Jerry Olexa had been on the receiving end of the TD pass from John Wagner.

Stan Ziarkowski had the honor of scoring the first extra point from placement after touchdown in modern IM history as Dorm 11 eeked out a 7 to 0 victory over Dorm 42.

After four minutes had passed in the second

half, Dorm 11 struck quickly by way of a bullet pass from Vic Rusich to Lou D'Orsaneo. The play had been set up on an interception by Ziarkowski on his own 45.

Jim Short did most of the throwing for the losing Dorm 42 nine; while Bud Seiffert was credited with recovering two of the opponent's fumbles. Van Sickle also stood out on the line for Dorm 42.

Dorm 22 Wins, 1-0

Dorm 22 and Dorm 14 had a passer's battle, with end runs added occasionally, but when the final tally was in, neither team had scored.

The win was awarded to Dorm 22 after IM officials had checked the tally sheet and found that Dorm 14 had failed to score a first down. Dorm 22 was credited with two first downs.

The line play of both teams was the high point of the match. Ron Engle and Hank Rudio were supercharged as they continued to hamper Dorm 14's running game. For Dorm 14, it was Dick Bell and Roger Brooks that stood out on the forward wall.

Field Goal is Failure

Dorm 22 had four chances to score from the five-yard line but were held back by a fired-up Dorm 14 line. Reb Hoover placed his team on the five on a 30-yard pass play to Engle. Hoover lost six on an end run; a penalty put his team back five more yards; a third down pass failed, and an attempt for a field goal from the 11 failed.

Alpha Gamma Rho scored the night's fourth shutout victory by topping stubborn Lambda Chi Alpha team, 6 to 0.

The scoring play resulted on an interception by speedy Griffin. Griffin picked off a pass on the Lambda Chi Alpha 40 and raced to the goal.

The attempt for the extra point failed.

Tonight's schedule shows Chi Phi meeting Sigma Alpha Mu at 7; Blue Devils against Stalag 24 at 7:45; Section 8 and the Twenty-Niners at 8:30; and Delta Upsilon and Phi Sigma Delta at 9:45.

Loes-Byrne Set for 2nd Game

(Continued from page one)

foot wallop into the bleachers in right center with Yogi Berra on base in the sixth provided the late inning insurance the Yanks needed.

Once again Collins had risen to the occasion as he did so many times during the regular season despite his .234 average. Both Cleveland and Chicago were beaten a most single-handedly by Collins who hit two homers against each in vital games.

Rain threatened the game early in the day but a warm sun broke through a heavy overcast during the early innings. In the final stages of the game, there were black clouds hanging low, forcing the lights to be turned on in the last of the eighth.

Brooklyn rocked Ford, the lefty who dared to face the heavy right-handed sluggers of the Dodgers, and scored two runs in the second inning on Furillo's homer off the top of the four-foot wall in right field, Robinson's triple and Don Zimmer's single.

The Yanks came right back with a pair in their half of the second on a walk to Collins and Howard's line drive homer into the lower stands in left.

Snider gave Brooklyn the lead again in the third when he smashed a 1-2 pitch by Ford deep into the upper deck in rightfield, breaking his own National League record with a sixth World Series home run.

Once again the Yanks lost no time in tying it up in their half of the third on a walk to Ford, Hank Bauer's single and two successive infield outs. Ford scampered in from third while the Dodger infield played back and Zimmer threw out Irv Noren for the second out.

Slams First Homer

With the game all knotted up at 3-3, Collins lined his first home run, four or five rows into the lower rightfield seats, to lead off the fourth inning.

Berra singled to right with one gone in the sixth, his first hit in three trips, and the final blast that knocked loose Newcombe was under way. Collins looked at one ball and hammered the next pitch over the head of Snider into the bleacher seats in right center. It must have traveled at least 400 feet, sailing out of sight over the auxiliary scoreboard.

Newcombe Relieved

Newcombe steadied to get Howard on a grounder to Reese but was sent to the showers after Bill Martin lofted a long fly over the head of Junior Gilliam in left center for a triple.

Don Bessent replaced Newcombe and Stengel sent up Eddie Robinson, a lefthanded batter, to hit for Phil Rizzuto. On the second pitch, Martin unexpectedly lit out for home but was nipped at the plate by Bessent's throw.

Even with a 6-3 bulge, the

Yanks were hard pressed to hold their advantage in the eighth due to a damaging error by Gil McDougald at third base.

Furillo Hits No. 3

Furillo's third hit, a single, started the Dodgers' dying swan spurt. Hodges flied out deep to Howard but Robinson's grounder bounced off McDougald's leg and squirted down the leftfield line. By the time the ball was retrieved, Furillo was on third and Robinson on second.

Zimmer's sacrifice fly to Noren was deep enough to let Furillo score and also long enough to get Robinson to third after the catch.

When Walter Alston, Brooklyn manager, called for Frank Kellert to bat for Bessent, Robinson pulled his sparkling steal. On the first pitch to Kellert, a righthanded batter, Jackie streaked for home and slid in under Ford's throw. Berra, Ford and Stengel bitterly protested the "safe" call by Plate Umpire Bill Summers, but they might as well have been yelling into a rain barrel.

Robinson's run made it 6-5, with Kellert representing the tying run at the plate. After Kellert singled into center, Stengel came out for a few tidbits of conversation with Ford. The crafty "Old Perfeesser" let Ford stay in the game, long enough to get Gilliam to pop up for the third out.

Old Case didn't stay with Ford (Continued on page seven)

Army-Lion Grid Tilt To Count Heavily In Eastern Ratings

By ROY WILLIAMS

Penn State's and Army's season-long football aspirations of being strong contenders in the race for Eastern honors this year will go on the line this Saturday at Michie Stadium, West Point, N.Y.

Although both teams had their early season headaches, each put on an impressive opening-day start by demonstrating solid offensive machines both on the ground and in the air. The Lions walloped BU, 35-0, and Army smothered Furman, 81-0.

Army and Penn State both popped up repeatedly in the predictor's crystal balls two months ago as being Eastern grid powerhouses in 1955, mainly on the basis of their identical 7-2 records last year.

This game Saturday will decide who stands where in the Eastern picture. Defensive strategy by both coaches will play a paramount part in the contest.

Last Spring and more recently this fall, Army Coach Earl Blaik made radical changes in his front line in the apparent effort to give Army a defensive net as strong as the offensive team that was No. 1 in rushing in '54.

Blaik's line changes revolved around guards Ralph Chesnauskas and Flay Goodwin, tackle and ex-



Ralph Chesnauskas
Army Tackle



Flay Goodwin
Junior Guard

center Dick Stephenson, and center Ed Szvetez.

With the apparent gestures of flipping a coin as to decide who should go where, Blaik indicated that he had the material for each position on his front wall, but the problem revolved around the angle of who would be the best man in each line position.

Blaik first hinted of moving Chesnauskas and Goodwin from their guard positions to tackles, and Stephenson from tackle to guard with sophomore Stan Slater working at the other guard.

In his opening-day lineup against Furman, however, Blaik came up with this tackle to tackle

lineup: Chesnauskas, left tackle; Slater, left guard; Szvetez, center; Goodwin, right guard; and Stephenson, right tackle.

At the ends Blaik also has let-termen starting—two of the 15 returning to the team—with Art Johnson, a junior, and senior Don Satterfield.

Blaik's radical movement of line personnel can be attributed to Don Holleder's step from end to quarterback plus the loss of Army's first three tackles and center.

With Chesnauskas, Stephenson, and Goodwin returning with considerable experience, Blaik will have to go along with Szvetez and Slater in his front wall although neither has as much experience as the first three.

In addition to Slater, just up from the plebe team, and junior Szvetez, Blaik will depend on soph Bill Saunders at right end to back up Satterfield.

Despite the fact that six of Blaik's first-team linemen are let-termen, he still will lack depth to substitute by units. In his second team he has only former Junior Varsity and Yearling material, with only a few having considerable experience.

With a front wall that weighs in at an average weight of 195 pounds, Blaik is again expected to have his notoriously fast defensive line.

STATE NOW

in Cinescope-Color
"THE BAR SIMISTER"

Jeff Richard Edmund Gwenn Dean Jagger

Starts Tomorrow



with MARSHALL THOMPSON
A UNIVERSAL-INTERNATIONAL PICTURE

Judy Warner

Continues

Anne Baxter - Rock Hudson

"ONE DESIRE"

Plus
Marciano-Moore
Fight Pictures

Nitty

Doors Open 8 p.m.

Victor Mature

"VIOLENT SATURDAY"

CinemaScope

Nitty

MIDNITE SHOW

FRIDAY DOORS OPEN 11:30

TWO DEADLY WEAPONS - BURNING LIPS!... HOT LEAD!...

THE GOOD DIE YOUNG

Gloria Graham
Richard Basehart