

KDR, Chug-A-Lugs Win Cage Titles

By IRV BRODSKY

Led by sharp-shooting Billy Kane, Kappa Delta Rho topped Sigma Nu, 54-38 last night, to capture the 1955 Intramural Fraternity Basketball Championship. In the independent finals Jack Farls paced the Chug-A-Lugs to a 48-36 victory over the Geeche Birds in the first half of the championship doubleheader at Recreation Hall.

Kane netted 26 points for KDR, 15 in the first half. His deadly accuracy and fine feeding sped the winners to a 26-16 lead at halftime. Although Sigma Nu threatened to catch up twice in the second half, they were no match for KDR last night.

Haky Injured

With the game less than a minute old, Steve Haky of Sigma Nu bruised his ankle and had to leave the game temporarily. This seemingly was a forewarning to the losers that trouble was coming. It was! The KDR's scored ten straight points before Jim Ustynowski sunk a foul shot for Sigma Nu's first marker.

At the quarter, Kane had eight points and KDR led, 12-4. At the half, Kane had 15 points and KDR led, 26-16. Sigma Nu got off to a fast start in the second half, but it was short-lived. Dick Meek, the loser's big center, tapped in a rebound a few seconds after teammate, Gary Lyons, hit with a long setshot. That cut the lead to six points. Then Lyons popped in a left-hander from the foul circle and the lead was cut to four. But that was the closest the Sigma Nu's ever got.

Lead 37-29

Kane and mates took charge again and built up their lead to 37-29 at the end of the third quarter. Kane, however, wasn't the only KDR that played a whale of a ball game. Bruce McPherson cut the cords for ten points, and Bob Dankanyin played a magnificent defensive game. Dankanyin held Ed Ritter, Sigma Nu's usual top scorer, to eight points—and only two in the second half. Dick Meek was Sigma Nu's high scorer and best rebounder. Meek hooped 12 points, four on rebound taps.

The Chug-A-Lugs had to come from behind to capture the independent crown. The Geeche Birds, led by Fred Wallitsch and Jim Erb, led 11-7 at the quarter, and 18-16 at halftime. At this point, Jack Farls, of the winners had netted eight points, on a combination of tap-ins and one-handers.

IM Correction

In Wednesday night's intramural wrestling action, Sigma Pi's Jim McHenry captured a 4-1 decision over Jay Tolson, Phi Sigma Delta. The action took place in a 145 pound bout.

The University of Michigan's new athletic administration building is part of a seven million dollar athletic plant expansion program.

Bedenk Faces Pitching, Catching Woes

By RON GATEHOUSE

Nittany baseball coach Joe Bedenk, with a sceptical glance at what the future holds in store for his 1955 Penn State diamond squad, is putting his mound and catching staffs slowly through the paces.

Preparing for a season that will offer as rugged a schedule as the 1954 campaign (9-7), the Lion nine will open against Western Maryland, April 13, with a skele-

ton battery that leaves Bedenk without a single veteran hurler or backstop.

Two top-flight pitchers, Keith Vesling and Garland Gingerich, will be absent when the Nittanies take to the field against their initial foe, and a host of outfielders won't be around to offer their services.

But three-year first baseman, Pat Kennedy, and infielder-outfielder Ron Weidenhammer, along with second baseman Chuck Russo, and outfielder Rex Bradley, will form a strong nucleus around

which Bedenk will be able to form the starting nine.

Bedenk will be forced to wait to see what the incoming unit of infielders has to offer before he can decide whether to place Weidenhammer at shortstop or center field.

But whichever way he decides, Russo at second and Kennedy at first should provide one half of a strong infield combination.

Arnelle on All-Foe Teams

Penn State basketball center Jesse Arnelle has been selected by two 1955 Lion foes on their all-opponent team. Bucknell and West Virginia both voted the 6'5" cager to their all-opponent first team's.

Baseball Managers

Sophomores interested in becoming second assistant baseball managers should report to the Athletic Association office in 248 Recreation Hall, according to head manager Tom Wise.

VETS

Have discharge papers and other records for the V.A. photostatted in less than a day at

Centre County Film Lab

122 W. Beaver Ave.

When March Winds Blow
It's Smart to Go to
THE
CHUCK WAGON

There's even more to Chevrolet styling than meets the eye!

This is beauty with a bonus . . . for Chevrolet styling is designed to add safety and comfort while you drive, and to return greater value when you trade.

Truly modern lines are shaped by usefulness. You can see what we mean in the deep crystal curve of Chevrolet's Sweep-Sight windshield . . . a dramatic style note, certainly, but one that stems from the need for wider, safer vision. Or take high-set taillights—they add to the impressive length of line . . . but they are up where they can be seen for safety's sake.

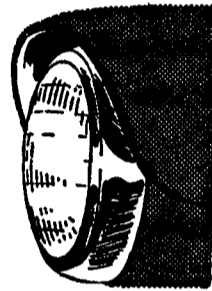
The smart louvers across the hood aren't just decoration . . . they mark the intake for the High-Level ventilation system for cleaner, fresher air. And the whole shape of the body—its lowness, the dipped belt line—is merely a reflection of a lowered center of gravity, the added stability.

This is truly functional styling that serves you better every mile, and preserves its value against the distant day when you trade. This is Body by Fisher—another Chevrolet exclusive in the low-price field. Come in and let us demonstrate that this new Chevrolet is just as exciting to drive as to look at!

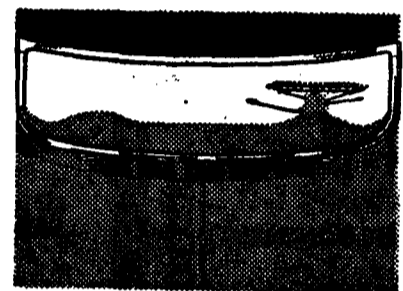
motoramic CHEVROLET



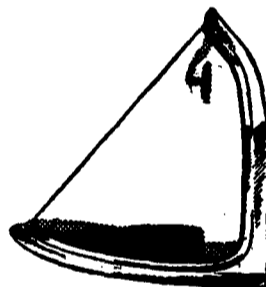
STEALING THE THUNDER FROM THE HIGH-PRICED CARS!



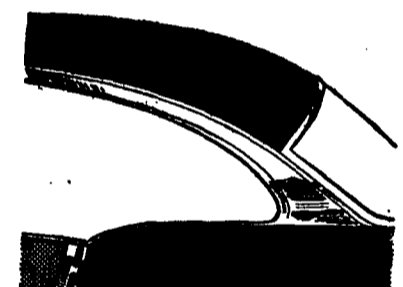
1 Flooded headlights



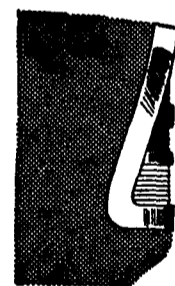
2 Lowered High-Level air intake



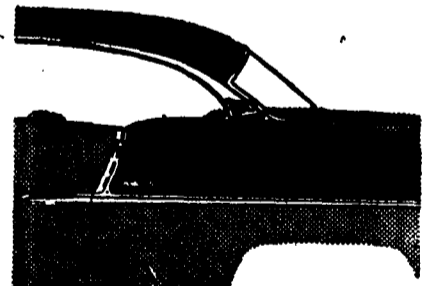
3 Sweep-Sight windshield



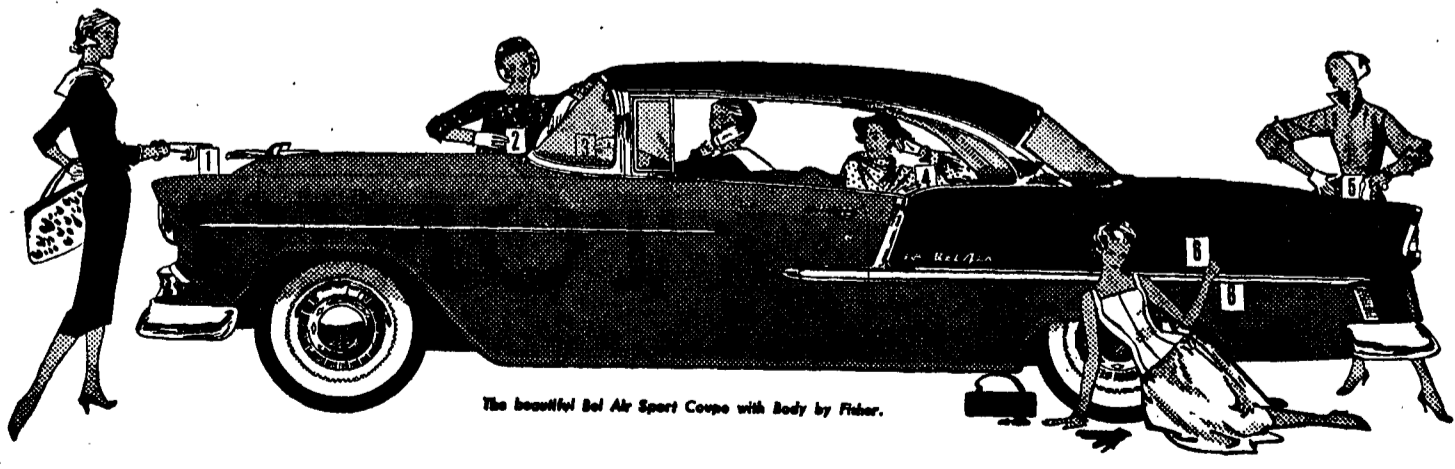
4 Distinctive dip in belt line



5 Fender-high taillights



6 Tasteful two-tone color styling



The beautiful Bel Air Sport Coupe with Body by Fisher.

SEE YOUR CHEVROLET DEALER

STATE NOW

Feature: 1:30, 3:31, 5:32, 7:38, 9:37

HIT THE DECK
CINEMASCOPE
JANE POWELL - JUDY MARTIN
REYNOLDS - WALTER PIDGEON - VIC DAMONE
THE RAYMOND - ANN MILLER - RUSS TAMBLIN

WARNER

Doors Open 1:15 p.m.
William Holden - Grace Kelly
"Bridges at Toko-Ri"
in Technicolor
Featuretime—
1:30, 3:29, 5:28, 7:27, 9:30

Marilyn Monroe

Doors Open 5:30 p.m.
—IN—
"The Asphalt Jungle"
Louis Calhern
Featuretime—
5:45 - 7:39 - 9:40