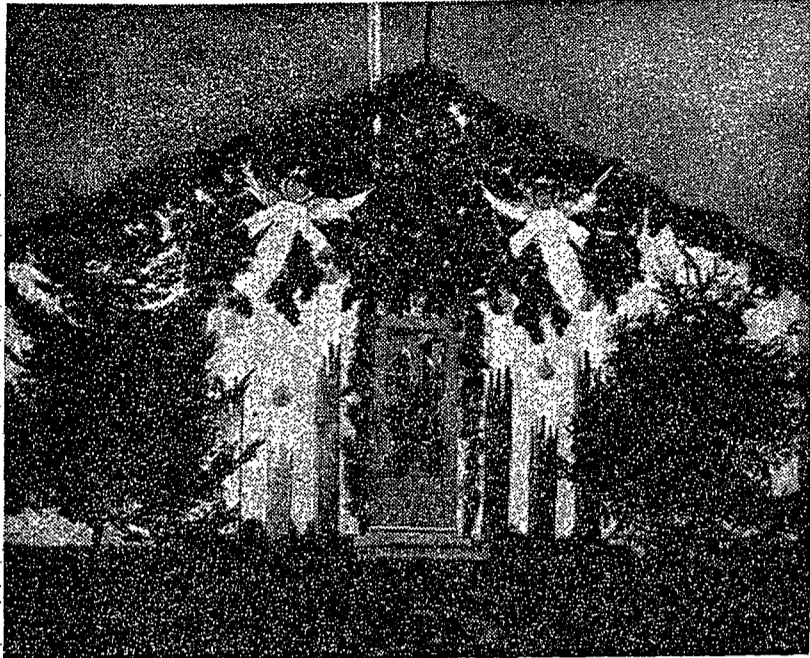


Christmas Cheer



—Photo by Rohrbaugh
LIGHTED TREES, candles, and angels set the Christmas scene at Nittany dorm 34. The dormitory won first prize of \$10 in the Association of Independent Men's Nittany area dormitory Christmas display contest. Nittany dorm 44 was awarded the second prize of \$5 for showing the Nativity scene.

Foundations Mark Yule

Three Christmas parties will be held at student church groups tonight.

Westminster Foundation of the Presbyterian church will hold a Christmas party at 7:30 tonight, with corn popping, carol singing, and dancing.

Wesley Foundation of the Methodist Church will hold a pizza party at 7:30 tonight at the foundation.

A pre-vacation party will be held by the **Newman Club** at 8 tonight at the student center.

The **Lutheran Student Association** will pack "kiddie kits" for refugee children in Germany at 7:30 tonight at the student center.

The **Inter-Varsity Christian Fellowship** will go Christmas caroling tonight. The group will meet at 7:30 p.m. in back of Old Main.

Rabbi Benjamin M. Kahn will lead a welcome-to-the-Sabbath minyan at 5:30 tonight at Hillel Foundation.

Society Created In Applied Arts

Alpha Rho Tau, a new applied arts honorary society for freshmen, held an organizational meeting Dec. 2. It is the first organization created for applied arts students since the establishment of the College of Engineering art department.

Formulation of plans for social events, sketching outings and cultural discussions on art have been begun by the group.

Officers of **Alpha Rho Tau** are Elaine Rindin, president and Patricia Lehr, vice president. Faculty adviser is Andrew W. Case, professor of fine arts.

The second meeting of the group will be held Jan. 4 in the TUB.

Social Gazette

Center Stage, "The Corn is Green," 8 tonight, Temporary Union Building.

Basketball, Penn State vs. Gettysburg College, 8 tonight, Recreation Hall. Penn State vs. Rutgers University, 8 p.m. tomorrow, Rec Hall.

Approved Fraternities

Forty-eight fraternities have been approved for the entertainment of women guests tonight, the dean of men's office announced yesterday.

They are: **Acacia, Alpha Chi Rho, Alpha Chi Sigma, Alpha Epsilon Pi, Alpha Gamma Rho, Alpha Phi Delta, Alpha Sigma Phi, Alpha Tau Omega, Alpha Zeta, Beaver House, Beta Sigma Rho, Beta Theta Pi, Chi Phi, Delta Chi, Delta Sigma Phi, Delta Tau Delta.**

Delta Theta Sigma, Delta Upsilon, Kappa Delta Rho, Kappa Sigma, Lambda Chi Alpha, Phi Delta Theta, Phi Epsilon Pi, Phi Gamma Delta, Phi Kappa, Phi Kappa Psi, Phi Kappa Sigma, Phi Kappa Tau, Phi Mu Delta, Phi Sigma Delta.

Phi Sigma Kappa, Pi Kappa Alpha, Pi Kappa Phi, Sigma Alpha Epsilon, Sigma Alpha Mu, Sigma Chi, Sigma Nu, Sigma Phi Alpha, Sigma Phi Epsilon, Sigma Pi, Tau Kappa Epsilon, Tau Phi Delta, Theta Chi, Theta Delta Chi, Theta Kappa Phi, Theta Xi, Triangle, and Zeta Beta Tau.

Kindergarten Alumni Hold Yule Reunion

Forty-five alumni of the College of Home Economics nursery school returned for a Christmas reunion with their old classmates Saturday morning.

Two classes, the five-year-olds and the eight-year-olds, were represented at two parties planned and directed by students in child development.

The guests noted many changes in the nursery school that have taken place since the days of their matriculation. Several mentioned that the chairs are a great deal smaller now than they were then.

Although many of the former nursery school students had gone on to advanced study at the same higher schools together, several had attended different institutions. The children seemed to enjoy comparing notes on their different experiences, according to Judith Koenig, a student hostess.

Decorations for the reunion in the nursery school were provided by the present students of the school. Two Christmas trees were decorated with original, hand-crafted designs.

Marriages

Palley-Holtzman

Mr. and Mrs. Samuel Holtzman of Pittsburgh announce the marriage of their daughter Tamara to Marshall Palley of Pittsburgh.

Mrs. Palley attended the University and is a member of Sigma Delta Tau.

Mr. Palley graduated from the Pennsylvania State College of Optometry and is a member of Omega Epsilon Phi.

Valentine Is Elected Jazz Club President

John Valentine was elected president of the newly formed jazz club Wednesday night by 175 of the 250 charter members.

Other officers elected were Walter Hoopes, vice president; Dorothy Drabble, secretary; Ronald Ross, treasurer, and Richard Rubenstein, historian.

A concert of Dave Brubeck tape recordings was played.

Co-Edits

Recently elected officers of **Phi Kappa Sigma** are William Rother, president; William Hume, vice president; Charles Stone, scholastic chairman; Charles Hayes, rushing chairman; Richard Tussey, recording secretary; John Albrecht, treasurer; Robert Sargent, corresponding secretary; George Crouse, social chairman; Howard Cook, pledgemaster; Robert Murphy, house manager; Louis Schneider, caterer; and John Cleland, kitchen helper.

Newly elected officers of **Phi Sigma Delta** are Lynn Meyers, president; Samuel Powell, vice president; Gordon Pogal, treasurer; Sidney Blecker, recording secretary; Robert Lapensohn, corresponding secretary; and Harry Yaverbaum, historian.

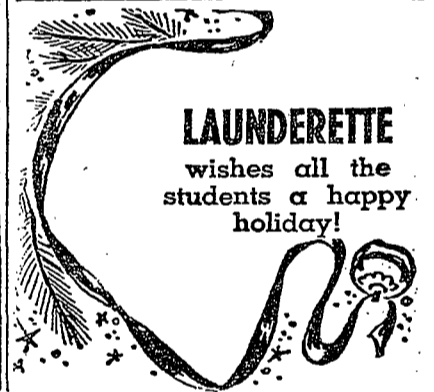
Officers recently elected by **Alpha Chi Sigma** are Charles Larson, master alchemist; Lyle Barnard, vice master alchemist; Gerald Gerhart, recorder; James Knapp, treasurer; Norman Sumner, reporter; Fred Beers, alumni secretary; John Lyon, social chairman; Robert Neiman, professional chairman; William Lennarz, caterer; and David Grove, historian.

Recently elected officers of **Alpha Epsilon Phi** are Estelle Caplan, dean; Lois Bacharach, sub-dean; Sandra Levin, treasurer; Estelle Orodener, assistant treasurer; Clare Stein, scribe; Joan Gluskin, recorder; Anne Sherman, rushing chairman and Norma Weiner, social chairman.

Officers of **Alpha Epsilon Pi** are Sidney Cohen, master; David Greenberg, lieutenant master; Arnold Cantor, exchequer; David Friendenberg, scribe; Nathan Supnick, member at large; Samuel Lear, house manager; James Schonberger, assistant exchequer; Jonathan Plaut, corresponding secretary and Frederic Cohen and Lawrence Cohen, sentinels.

New officers of **Beta Sigma Rho** are Lawrence Cooper, chancellor; Harold Astrich, vice chancellor; Irwin Weiner, warden; Donald Hoffman, vice warden and Louis Fryman, secretary-treasurer.

LAUNDERETTE
 wishes all the students a happy holiday!



NOW Offset Printing in State College
Commercial Printing
 352 E. College Ave.

Party Line

Gamma Phi Beta and **Alpha Sigma Phi** recently held a Christmas party for 20 Boalsburg children. Movies were shown and refreshments served. Santa Claus distributed the presents.

Sigma Alpha Mu recently entertained **Alpha Epsilon Phi** at the chapter house. The pledges of **Alpha Epsilon Phi** presented a skit.

Alpha Gamma Rho entertained **Alpha Gamma Delta** at the chapter house Dec. 9. A skit was presented by the pledges after which dancing took place and refreshments were served.

Gifts, carols, Christmas stories and refreshments were featured at a Christmas party given by the alumnae chapter for the undergraduate members of **Alpha Gamma Delta**.

Delta Zeta recently held its annual pledge dance at **Delta Chi**. Terry Flynn was chosen as Ideal Pledge and Louise Moreman as Dream Girl of **Delta Zeta**.

Alpha Omicron Pi recently observed its Founder's Day in Maple Cottage, its former chapter house. Alumnae, sisters, and pledges sang. Refreshments were served.

Pi Kappa Phi recently held its annual pledge dinner-dance in honor of the fall pledge class. At the dinner the pledges pre-

sented their paddles to the graduating seniors. After the dinner a closed formal dance was held with the "Four Clubmen" playing.

Members of **Beta Sigma Omicron** and **Vitruvius** colony of **Alpha Rho Chi** caroled Monday night at the President's home, University Hospital, and the women's dormitories.

Zeta Tau Alpha held a tea recently in the suite to honor its national second vice president, Mrs. Harold Kerr.

Phi Sigma Sigma and **Acacia** held a Christmas party for underprivileged children at the chapter house. Entertainment, gifts, and refreshments were included.

WISHING
 the
 COLLEGIAN
 STAFF
 a
 MERRY
 CHRISTMAS
 Fred Harry
 Peg Bill
 Walt



Merry
 Christmas
 to all
 Our Friends!

And don't leave this campus without getting that last minute snack — one for the road! Stop in today for one of our ...

- Hamburger 20c
- Ham 'n Cheese .. 45c
- Tuna Fish 25c
- Hot Dog 15c
- Chipped Beef ... 35c

NITTANY DELL

Across from Ath Hall

Christmas
 Greetings

May your Yuletide glow brightly with that good old fashioned Christmas cheer that makes every heart lighter, every friendship warmer, every hour richer in happiness and contentment.

Balford
 INC

Dry Cleaners

Tailors

307 W. Beaver

AD 7-7661



THE SMART SHOP

Wishes each and everyone of you a very
MERRY CHRISTMAS
 and a
HAPPY NEW YEAR!