

University Expansion Suggested by Hays

By DON SHOEMAKER

Jo Hays, of State College, Democratic candidate for the State Senate, pledged his support of the labor platform and University expansion at a meeting sponsored by the University service employees Wednesday night.

Hays spoke at a political meeting during which candidates for state legislative offices from both major parties expressed their views on local and state issues.

Student Report Changes Asked By Tribunal

One change and two additions to the section of the Student Encampment report on academic honesty and judicial concerning membership and organization of Tribunal were voted by Tribunal Tuesday night.

The recommendations must be submitted to All-University Cabinet for approval.

The report, which was submitted at Student Encampment, stated that membership would be composed of five juniors and five seniors who would be appointed at the end of their sophomore year and serve for two years.

Tribunal recommended that the board be composed of four juniors and four seniors, with a junior alternate being appointed specifically as an alternate. He would fill the post of any junior member who could not attend. He would continue as an alternate member his senior year, and a junior alternate would be appointed.

The group also specified that members serve for four consecutive semesters, being appointed during their third or fourth semester.

Appointments will be made by the All-University president, after recommendations are made by the screening board, during the first week of April. This will be done to avoid confusion of appointments with candidates for All-University or class offices.

There are now more than 13,000,000 working couples in the nation.

He urged that the University be "not too modest in its claims for expansion" because there will be twice as many eligible for college in ten years as there are now.

He asked closer cooperation between the union and the University. "We would like to see the University labor relations become the model for the state," he said.

Open Trustee Meetings
He also called for the University Board of Trustees to work in the open. "The University should bring this about," he said, "so that it doesn't become a political matter."

Charles Emerick, Democratic candidate for State Assembly, called on the University to "assume some responsibility for labor at the University."

"Men should be able to meet with their employer and come to a conclusion," he added.

Hits Sales Tax
He attacked the sales tax, saying it is a "pitiful and petty tax, pulling pennies from poor people and reducing the dignity of the Commonwealth to that of a beggar with a tin cup."

When asked in the question period what he would propose in its stead, Emerick said the state financial system needed revision, with an adjustment in the tax program to make up the deficit.

Four Candidates Speak
Those who participated in the meeting were Sen. A. H. Letzler, Republican incumbent; Hays, his opponent; Republican Assemblyman P. A. Frost, of State College; and Emerick.

Approximately 100 people, most of them union members, attended the meeting.

Hays and Emerick were the only candidates who took a definite stand on the local labor issue. The others confined their remarks

mostly to state issues.

Letzler reviewed his record in the Senate legislature. He said he was proud to have supported 17 of 27 bills backed by the Pennsylvania Federation of Labor. The ten he opposed, he said, did no injury to labor.

He supported the sales tax, he said, so state real estate taxes would not have to be levied, and because there are no other adequate proposals to raise the required funds.

Frost spoke of the limitation of law with respect to human relations. "You can legislate, but law can't make men change their thinking," he said.

In the question period, Letzler was asked why an audited report of University expenditures wasn't made public.

Letzler said he didn't know. He said the only way to accomplish it would be to introduce a bill, and pledged his support to such a bill.

Student Hostess Injured Dancing

The housemother joined the party.

And later the infirmary list. Faith Gallagher, Pine Cottage housemother, is relaxing in the University Hospital with a broken foot as a result of strenuous activity in the line of duty.

Miss Gallagher, seventh semester arts and letters major, joined her coed charges in a jitterbug session during a party at the cottage Monday night. She suffered a fracture of the fifth metatarsal as a result.

The housemother will be wearing a cast and using crutches for six weeks.

Junior Prom Chairman Appointed by Thalimer

Committee heads for the Junior Prom have been announced by John Thalimer, Junior class president.

Chairman for the prom is Earl Seely, class vice-president.

Others are Judith Burns, decorations and program; Robert McMillan, intermission, refreshments and requisition; Janet McKee, coronation and queen; Carl Saperstein and Vanessa Johnson, publicity.

Students wishing to sign up for the publicity committee may leave names in care of Thalimer at the Student Union desk in Old Main.

Klimcke, Fegley Are Chosen 'Lion,' 'Frothy'

Alfred Klimcke, third semester journalism major, and Charles Fegley, third semester mechanical engineering major, have been named the Nittany Lion and Frothy for the football season.

They will entertain at the Penn State-Virginia game Saturday, at remaining home games, and possibly at Penn and Pitt.

Klimcke was named Nittany Lion by Harold R. Gilbert, assistant director of athletics. He was chosen through interviews and by his letter of application.

Klimcke, who, along with Fegley, will be part of the Penn State Blue Band's half-time entertainment, reports that the ten pounds of fur are not too encumbering, but after walking into some of the band members he decided to prop some paper in the Lion's mouth to provide better visibility. He is probably the only student at Penn State who gets a view of a lion's mouth from the inside looking out and lives to tell of it.

Thespian Tickets

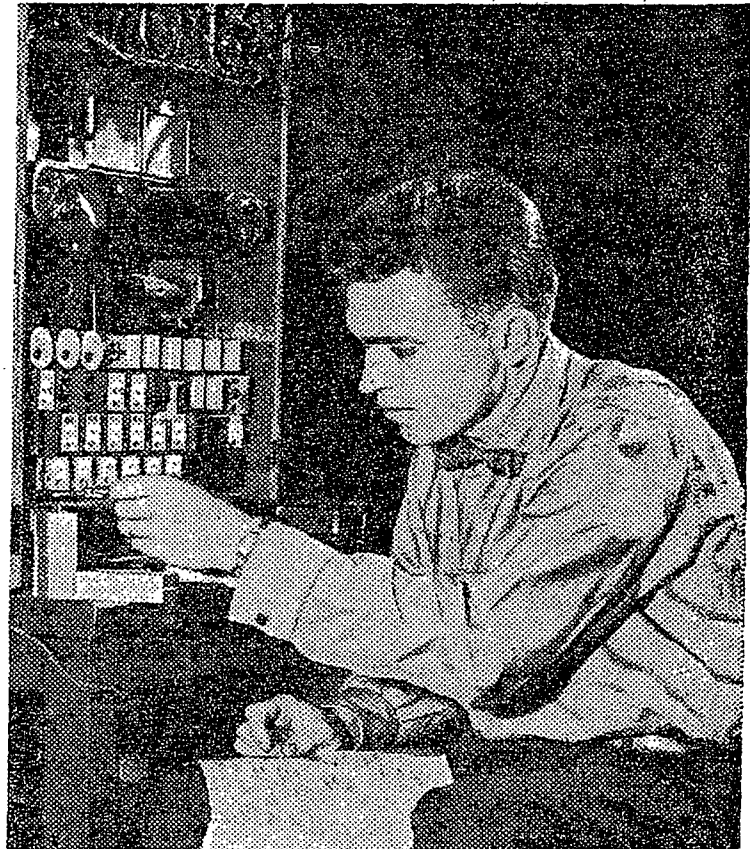
Complimentary tickets for Thespians and members of the cast and crews of "Funny Side Up" may be obtained at the Student Union desk in Old Main today.

A CAMPUS-TO-CAREER CASE HISTORY

"All the answers aren't in the book"

W. D. Garland, E.E. '52, Univ. of California, is working for the Pacific Telephone Company. We thought you'd be interested in what Don told us about his first assignment.

(Reading time: 45 seconds)



Here Don Garland makes noise distribution measurements with a Level Distribution Recorder

"My job is to help solve problems of noise and other interference on telephone lines due to power interference. Inductive co-ordination is the technical term for the work.

"First thing the Chief Engineer explained to me was that 'all the answers aren't in the book.' He was right. Most of the problems have required a combination of electrical engineering, a knowledge of costs and generous amount of ingenuity. I like it that way. It's given me an immediate opportunity to put into practice the theory I learned at school.

"In addition to this on-the-job experience, I have attended several special training courses conducted by the company. Now I'm breaking in a new man, just like when I started."

Don Garland's work is typical of many engineering assignments in the Bell Telephone Companies. There are similar opportunities for college graduates with Bell Telephone Laboratories, Western Electric and Sandia Corporation. If you'd like to get more details, see your Placement Officer. He will be glad to help you.

Today WARNER theatres

Cathaum

"SEVEN BRIDES FOR SEVEN BROTHERS"

in CinemaScope

Jane Powell - Howard Keel

Nittany

"Excellent!" - Post

"LITTLE FUGITIVE"

Richie Andrusco

CATHAUM

Midnite Show Tonite

"I hoped you'd come back—but to love—not to kill!"

COLUMBIA PICTURES presents

DANA ANDREWS

DONNA REED

THREE HOURS TO KILL

COLOR BY TECHNICOLOR CO-STARRING DIANNE FOSTER

For all your rushing and weekend parties we have a complete stock of . . .

PARTY COOKIES and PASTRIES

Oven-Fresh! Also Donuts and Cider

COFFEE SPOT

221 F. Beaver Ave. AD 8-6831



BELL TELEPHONE SYSTEM