

19 Senior Women Chosen for 'Arch'

Nineteen senior women have been selected for the May Day Honor Arch. One more will be chosen today. Those selected are Jane Bishop, Ethel Brown, Patricia Colgan, Francis Crawford, Peggy Crooks, Nancy Gemmill, Hilda Hogeland, Ruth Israel, Linda Jacobs, Jane Larpenteur, Nancy Lusk, Jane Mason, Nancy Meyers, Shirley Musgrave, Mary Petitgout, Betsy Siegler, Ellen Wandel, Barbara

WSGA Names 4 to Senate, Customs Posts

Helen Sidman, fourth semester arts and letters major, was appointed parliamentarian of Women's Student Government Association Senate last night.

Three freshmen were appointed by Senate joint Freshman Customs and Regulations Board. They were Margaret Boyd, second semester education major; Helena Moraio, second semester arts and letters major; and Margaret Pearce, second semester journalism major.

WSGA also decided to ask Freshman Council to set up a committee to further investigate the situation of giving two special 11 o'clocks to second semester women who have made high scholastic averages.

Freshman Council defeated this proposal in a straw vote Tuesday night. Definite action was postponed because a quorum was not present. A vote will not be taken on the question at the council's next meeting May 18.

Arlene Boregson, WSGA secretary, said minutes of the May 19 meeting will probably be mimeographed and distributed to women's dormitories.

A form letter, prepared by a WSGA committee to investigate the black-mark system, is ready to be mimeographed. This letter will be sent to 25 colleges and universities using an honor system.

The committee's work will be continued in the fall semester, when replies to the letters will be analyzed and suggestions made.

Leonides Volunteers

Members of Leonides, independent women's organization, who wish to work on their Spring Week float or the booth may contact Joyce Millett, 251 McElwain. Leonides is working with Penn Haven for Spring Week.

Werts, and Juliana Fees. Carolyn Pelzga and Eliza Newell were selected for the honor arch but will be unable to participate.

The women were selected on the basis of campus activities and contributions to the University.

To Hold Arches
They will stand in pairs holding ten arches under which the May Queen procession will pass. Rehearsal for May Day ceremonies will be held at 4 p.m. today in front of Old Main.

Groups to rehearse include heralds, jesters, hemlock chain, honor arch, class attendants, maid-of-honor, May Queen, Women's Student Government Association and Women's Recreation Association presidents, Penn State Christian Association representative, Panhellenic singing group, and maypole dancers.

Chairmen Listed
Maud Strawn is general chairman of May Day. Other committee chairmen include Marie Wagner, Patricia Colgan, and Ida Wylie, ceremonies; Carol Stevenson, costumes; Janet Feaster and Barbara Connitt, decorations; Aurelia Arre, elections; Elizabeth Engel, invitations and programs, Margaret Trolier, music and entertainment; Constance Weitknecht, properties; Patricia Dickinson and Carolyn Cunningham, publicity; Barbara Kilmer, open house and tea; and Norma Reck, tea for former May Queens.

Narrator will be Miss Wylie and ushers will be members of the Blue Key and Androcles, junior men's hat societies, and Cwens, sophomore women's hat society. May Day music will be furnished by the Prep Band.

Pi Beta Phi

Scholarship and leadership awards were presented to Joyce Gardner, Phyllis Hubner, Jane Albrecht, and Gail Fromer at the annual Pi Beta Phi Founders' Day banquet recently at the Autoport.

Band Tickets Available

Members of the Prep Band playing during the May Day program Saturday may pick up reserved seat tickets in the Dean of Women's office this week.

Concerts To Begin At Hillel

Elio Gianturco, associate professor of romance languages, will begin a series of five historical piano concerts at 8 tonight at Hillel Foundation.

Gianturco, a pianist, musicologist, and music critic, will trace the development of the Italian repertoire of compositions for keyboard instruments from the Renaissance to today.

Gianturco has become well-known locally for his work as commentator on radio station WMAJ, where he has been explaining in successive broadcasts the meanings of classical Italian musicians, such as Giovanni Gabrieli, Claudio Monteverdi, Corelli, and others.

Tomorrow's concert will include pieces by the major organists and lutenists of the Renaissance: Padovano, Merulo, Cavazzoni, Terzi, Molinaro and others in piano transcriptions.

Later concerts will present the works of artists of the Baroque, Neapolitan, and Modern Italian period. A concert will be given each Thursday evening.

Tickets may be purchased for the entire series for \$5, or \$2 for a single concert. Checks may be made out to E. Gianturco and sent to Post Office Box 452, State College.

It's About Time—

(Continued from page four)
mix, and there simply isn't enough TIME.

I guess I've been in a newspaper office too long. Except for pointing to the Neanderthal man who didn't own a radio-clock, who didn't rush to psych experiments, who never even heard of ulcers, I can't offer any concrete solution.

Perhaps somebody could push a National Let's Forget What Time It Is Week through Congress. That is, if our Senators didn't have so many bills to cover in such a short period of . . .

More people are killed in the bath tub each year than in airplanes or on buses.

11 O'Clocks Granted For Folk Festival

Women will receive 11 o'clock permissions from the Dean of Women's office to attend the Folk Festival tonight at Recreation Hall. The folk festival is held in connection with the seventh annual Pennsylvania Recreation Conference. Admission is free.

Demonstration teams in costumes will present varied types of folk and square dances at 8 p.m. Demonstration dances will be taught to members of the audience. After the dance team has completed its routine, it will form other sets with those in the audience who wish to learn the dance.

Caller for the square dance will be Irvin Lytle, sixth semester recreation major. Assisting Lytle and his orchestra will be callers William M. Smith, professor of family relations, and Patricia Olkkonen, fifth semester recreation major. Miss Olkkonen will use a variety of calls she has learned in Michigan which are novel to this area.

The 50-50 Club, University Club, and several senior extension clubs from other parts of the state will participate in the program. The colorful Bavarian Schuhplattlers will present old German dances.

The recreation conference which began Wednesday will end at noon tomorrow. More than 300 delegates are attending the conference.

2d Dance Concert Slated for Tonight

The second performance of the annual Spring Modern Dance Concert, sponsored by the College of Physical Education and Athletics, will be given at 8 tonight in the rhythm room in White Hall.

Free tickets for tonight's and Saturday night's performances may be obtained in White Hall.

Chi Phi

Newly elected officers of Chi Phi are William Roberts, president; Robert Lewis, vice president; Robert Pierce, secretary; James Magee, treasurer; Robert Davis, house manager and pledge master; and Donald Lowry, historian.

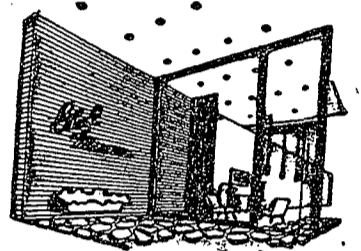
WSGA House to Meet

Woman's Student Government Association house of representatives will meet at 6:30 tonight in White Hall. Last minute plans for May Day will be discussed.

Chimes Taps 18 Sophomores

Eighteen sophomore women were tapped by Chimes, junior women's hat society, at 6 a.m. today.

They are Constance Anderson, Mary Buchanan, Sandra Dahlinger, Patricia Dickinson, Carol Durbin, Barbara Lee Edwards, Patricia Farber, Janet Feaster, Sylvia Fish, Martha Heim, Christine Kauffman, Elizabeth Kraabel, Ann Leh, Suzanne Leib, Nancy Rees, Rhoda Resneck, Constance Weitknecht, Judith Walter.



Thru the Looking Glass

with Gabbi

Here we are decked out in a slicker and umbrella just in case of another crazy mixed up monsoon, heading down to ETHEL'S in quest of something great for mom. (Watch out for the puddle, what puddle . . . ddddle, we are now speaking to you from 50 feet below sea level.) Before we get carried away any further, Sunday is the day the lady of the house holds the reigns and breakfasts in bed (until something goes wrong in the kitchen). At ETHEL'S you need not worry about the shekel situation; after all, it's the thought that counts. (Down, boy).

Milk glass without bossy's help but that's an udder story, since ETHEL'S has this exquisitely fine glass in many forms—Punch bowls and pitchers (for adoring and pouring), candy and nut dishes (for entertaining and draining), candlesticks and cake platters (now it's your turn to play Keats). A gift of milk glass shows fine taste.

More pleasure for picnics and parties instead of toting pails of ice to you outdoor blasts—Scotch Coolers and Kaddies are as neat and convenient as a book condensation for lit class. They're gay, perky and plaid, coming in 3 sizes, small, medium and it's easier-to-take-the-refrigerator. Just think of all the icecold be . . . I mean pop you can carry to keep the party spirit with you.

Make Mom's junk drawer portable and give her a lovely purse, perhaps in smooth tanned skin, patent leather or faille. The new spring fashion is the keynote in ETHEL'S selection with accent on style and distinction. Choose a light gay straw in many colors to add to summer cotton charm. Whatever it may be, chosen by you, with a little coaching from the guy at third base (namely the very helpful consultants "thru the looking glass") will please your mother and make her forget all about the red line under your checking account. Make it a must this week to stop in ETHEL'S . . . Adieu all

Ethel Meadows

112 E. COLLEGE AVE. STATE COLLEGE, PA.



Are you puzzled about what you should send mother on her day?

The Blair Shop

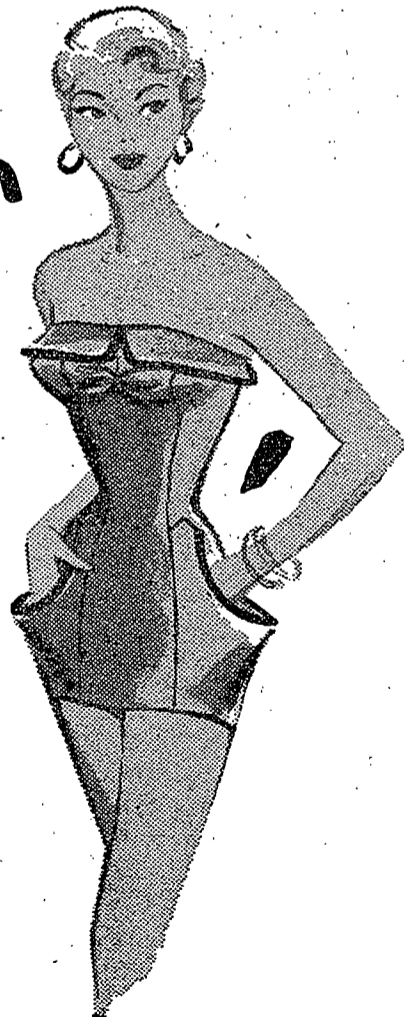
is filled with lovely suggestions and all gifts are nicely wrapped and mailed for you

The Blair Shop

sea nymph

Do you have beach jitters? Does your swim suit ride up? Slip down? In this glamour suit from SMART SHOP your worries are over! SEA NYMPH'S exclusive "tapered torso" keeps your suit up at the top, down at the bottom. Does wonders for your figure!

Full Selection of Colors, Styles, Fabrics & Sizes



\$8.98 - \$12.98

— SMART SHOP —

BRING MOM IN WITH YOU THIS WEEKEND!