

Administration Acts On Traffic Offenses

The Council of the Administration has adopted recommendations concerning faculty and staff traffic violations, Wilmer E. Kenworthy, director of student affairs, said yesterday.

However, a statement describing the recommendations will not be available until they have been approved by the University Board of Trustees, Kenworthy said. The next meeting of the board is May 14.

Chapel Sketch Held Pending Board Approval

Louis H. Bell, director of Public Information, said today the architectural sketch for the All-Faith Chapel will not be made public until approved by the Board of Trustees. The board is scheduled to meet May 14.

Eugene Gladys, president of Vitruvius Society, one of five campus groups seeking a contemporary design for the chapel, said Tuesday that 3000 signatures had been collected on petitions for the architecture change, and added that only 60 per cent of the petitions had been returned.

Gladys said a delay in obtaining the names of architecture alumni had delayed sending letters to the alumni, asking for sponsorship of the contemporary design.

Architects visited the campus recently to obtain information on the location of the chapel, and modification of the plans.

Speech Class Plans Telecasts

Penn State, past and present, will be featured on three 15-minute television programs over Station WPTA in Harrisburg, May 6, 13, and 20, Harold E. Nelson, associate professor of speech, has announced.

Nelson said the telecasts will be prepared by the 25 students in Speech 437, a course in speech and television.

The class is now preparing motion pictures of demonstrations to gain experience in the visual presentation of programs, Nelson said. Since no television equipment is available at the University at present, work with films is the best way to provide this experience, he explained.

McKalip Elected Head Of ROTC Honorary

New officers of Pi Tau Pi Sigma, national Signal Corp ROTC honorary are Diehl McKalip, president; Curtis Hare, vice president; Robert Moyer, adjutant; Bernard Kleinstub, treasurer; Walter Hoopes, social chairman; and Phillips Scott, public relation chairman.

Scholarship Established For Business Honorary

An annual scholarship award for a junior class member of Delta Sigma Pi, national business honorary fraternity, has been established by Ray S. Tannehill, vice president in charge of revenue and finance, Bell Telephone Company of Pennsylvania.

Bast, the name of the strong fibers obtained from certain plants, is used for making ropes, cords, and various kinds of cloth.

ADVENTURE *1st Year*
EUROPE, 60 Days, \$490 (all expense incl. steamer)
Bicycle, Fallboat, Ski, Motor, Rail. Also Latin America, West, Orient.

TRAVEL
Around the World, \$995 all expense Low cost trips to every corner of the globe. Congenial groups for those who wish to get off the beaten track even trips for explorers.

STUDY *Special Groups*
LANGUAGES, ART, DANCE, MUSIC. College Credit. Some scholarships available.

Your Travel Agent or Students International Travel Association
SITA
545 FIFTH AVE., NEW YORK 17 • MU 2-6544

The recommendations adopted by the council were submitted by a three-man committee set up to investigate and recommend measures that can be taken to enforce traffic regulations for staff and faculty violators.

The committee, headed by Walter H. Wiegand, director of physical plant, was formed after students complained of the inequities in campus traffic regulations. Other members of the committee are Ossian R. MacKenzie, dean of the College of Business Administration, and Ernest B. McCoy, dean of the college of Physical Education and Athletics.

Because of the inequities in the system, All-University Cabinet on April 1 agreed to recommend to the University that steps be taken to establish a suitable and workable method of curbing staff and faculty traffic violations.

Students have complained that while they are fined for violations, faculty, staff, and graduate students are not disciplined for the same violations.

At the present time deans of the colleges are told when faculty and staff members in their college violate regulations. Enforcement or disciplinary measures are solely in their hands. Graduate students are warned by the Dean of Men's office or the dean of the College in which they are doing graduate work.

Workmen Install Cables In Campus Circuits

Workmen are now installing electrical cables in the main trunk circuits on campus.

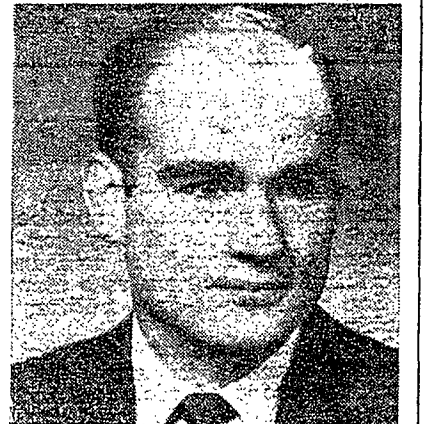
Walter H. Weigand, director of the physical plant, said the project is part of the General State Authority program to install new cable and replace some of the existing cable at the University.

Prof's Book Published

"Your Child and His Art," a book by Viktor Lowenfeld, professor of art education, has been published by the Macmillan Co.

JERRY MILLER QUARTET
at the
TOWN HOUSE
THIS WEEKEND
Don't Miss T.G.I.F. and Saturday Afternoon Jazz Clinic at 3 p.m.

Old Gold Cheers Cheerleader



For boosting Penn State spirit, as captain of the cheerleading squad, Samuel Wagner wins congratulations and a carton of Old Golds.

More and more folks are cheering Old Golds, too. Old Golds fine and friendly tobaccos always give you a Treat instead of a Treatment, for real smoking relaxation and pleasure. Try them either King Size or Regular.

Lost-Hour's Sleep, Daylight Saving Starts Sunday

Daylight Saving Time starts Sunday. This means that everyone should turn his clock ahead one hour. This means you lose an hour. Deciding when to lose this hour creates a problem.

If you turned your clock ahead at 12:01 when it should be done all coeds would immediately be a minute late getting to the dormitory. If you wait until just before getting in bed then you have lost an hour sleep, but if you wait until morning you are likely to be late for chapel.

If you decide it is all too confusing and forget it completely, you'll really be messed up because all classes, events, etc. will be on Daylight Saving Time.

Miller Elected Newman Head

Newman Club has elected Matthew Miller, third semester industrial engineering major, president for the forthcoming year.

Other officers are vice president, Walter Edelen; recording secretary, Nancy Snyder; corresponding secretary, Mimi Hoover, and treasurer, Paul Kennedy.

Miller, and Donald Loutzenhiser, fourth semester horticulture major, will attend the Middle Atlantic Province Convention April 30 through May 2 as voting delegates.

Ag Students Get Year-Long Training

By MARNIE SCHENCK

Many people, especially adults, seem to think the only things learned in college come from books. The animal husbandry majors on Ag Hill can testify differently, however. Two men particularly, William Kelly and William Sipple, seventh semester animal husbandry majors, can tell of the practical experience that they are getting. They are two of the three men who live over the sheep barns.

The lambing season (when the lambs are usually born) runs from January to May. This year it started in October. During the lambing season Sipple and Kelly and members of the sheep management class check the sheep every hour of the night and assist at all births. So far this year 250 lambs have been born. About 150 of them have been born at night.

Every member of the sheep management class must spend at least one night during the season on duty. The men who live over the barns are on call at all times. They also are in charge of feeding the sheep and cleaning the barns.

Pneumonia Fatalities

This year there has been a very good percentage of live births. Most deaths that occur after birth have been from pneumonia.

Sheep, like humans, sometimes take a long time to give birth. One night two boys started a delivery at 3 a.m. About 5 a.m. they had to call Carroll S. Shaffner, assistant in animal husbandry and superintendent of sheep to help. Shaffner finally called a veterinarian who performed a Caesarean.

The lamb was born at 7 a.m. There have been a great many multiple births, a total of 62 sets of twins and two sets of triplets so far.

600-Head Sheep Herd

The college sheep herd at present numbers about 600 head. Many times during the year sheep are shown at fairs and livestock shows all over the country. Rams have been sold for as high as \$750 each.

The college raises six kinds of sheep and is especially known for the Hampshire brand. Five of the six brands are lambing now. The Merinos, a hardier brand which produces a fine grade of wool, will lamb when the sheep are put out to pasture in a few weeks.

The sheep management class gets more practical experience besides delivery. They are also taught to shear sheep and prepare them for shows. Some members have been working for about three weeks on sheep to be shown tomorrow in the Little International Show.

Eng Lecture Canceled

Engineering 3 lecture has been canceled for Monday.

CLASSIFIEDS

FOR SALE
DEPARTING BASSMAN will sell good bass fiddle; has history of jazz in its soul. Phone 3933 now.
1942 FORD 4-door, radio and heater, A-1 condition. W. E. Ripka, 1206 W. Beaver Ave., State College. Phone 4632.

FOR RENT
APARTMENT TO share permanently. Available beginning June 1st. Prefer graduate students. Call 8-8925 between 6 and 8 p.m.
SINGLE ROOM for rent. 434 West College Avenue. Phone 7701.
ROOMS FOR all summer sessions at Marilyn Hall, 317 E. Beaver. Convenient to town and campus. Make reservations now. Reservations for board and room for fall semester also being taken. Ask for Mrs. Elward.
FURNISHED APARTMENT during June, July and August. Three rooms, private bath and entrance, cooking facilities. Reasonable. Call 7958 after 5 p.m.

LOST
ONE 1954 class ring, aquamarine stone. Initials J.J.L. Vicinity Foster between Pugh and Frazier. Call Jack 8-9021. Reward.
WOMAN'S GOLD Bulova watch with black suede band April 13th at Whipple's Dam. Call ext. 1090. Ask for Anne. Reward.
K&E SLIDERULE before vacation. Name on case and sliderule. Call Al Gavenas 8-6025.
ELGIN WRIST watch, leather case. Liberal reward. Call State College 2417.

LOST
SWISS WRISTWATCH, tan leather strap, left in Carnegie about a week ago. Reward. Ann Hosfeld, 408 Simmons.
GOLD BULOVA men's wrist watch on first fairway of golf course Sat. afternoon. Devorris 4409.
BLACK EVENING Purse containing Parker pencil, earrings and compact. Reward. Call 45 McElwain.
WOMAN'S WHITE topper at ATO Saturday night, IFC Weekend. Please contact Bob Yode 7683. Reward.
PARKER 51 pen, maroon body. Finder please call ext. 297.
Pi K. A. Sweetheart pin Saturday night between Locust Lane and Pi Kappa Alpha. Return to S.U.
IN REC Hall locker room: Bulova watch and Spiedel I.D. bracelet engraved with Stanley. Reward. Phone ext. 1196.

FOUND
GOLD BRACELET with opal sets at IFC Ball. Call 45 McElwain.
FOUND March 28—medium-sized brown and white collie pup with good disposition. Phone 419 McElwain or State College.

WANTED
DOUBLE ROOM with kitchen for fall semester. Call Dan Watanabe, Nittany ext. 292.
PASSENGERS TO Europe this summer! Contact Tony Cline or Dick Packer, Phi Gamma Delta 4326. Cheap rates.

HELP WANTED
PART-TIME outside salesman to sell paint to maintenance accounts, fraternities, etc. State College TV.
STUDENTS EARN up to \$1.50 per hour on a steady part-time job. See "Perry" at Dux Club, 128 S. Pugh.

WORK WANTED
WASHING AND ironing to do at home. Pick-up and deliver. Phone 4534.
IS YOUR typewriter giving you trouble? If so you can have it repaired. Just dial 2492 for pick-up or bring to 633 W. College Ave.

TYPING WANTED
TYPING THESIS term paper reports. Experienced, neat, accurate. Standard rates. Call 3341.
TYPING WANTED including theses and term papers. Don't leave yours until the last minute. Call 3068.

MISCELLANEOUS
TENNIS FANS—Its Hassinger for racket stringing the No-Awl way. Prompt service, guaranteed work. Longer life to string and racket. R. T. Hassinger, White Hall or 514 Beaver Ave. after 5 p.m.
FOR YOUR next social affair, would you like your party sandwiches or fancy cookies to have the professional look and homemade flavor? Call Mrs. Garner and order.
RADIO AND TV guaranteed service, prompt and efficient. State College TV, 122 N. Atherton. Phone 8-6021.

Back for Spring!

RAINBOW

Available at your Breyer Dealer's in cones, freshly-dipped pints, quarts and economical half-gallons.

Red Raspberry Ice Cream
Vanilla Ice Cream
and Lime Sherbet