

# Leonides Elections to Be Held Today; Buchanan, Packard Candidates

Betty Buchanan, sixth semester education major, and Loa Joan Packard, sixth semester arts and letters major, will run for president of Leonides, independent women's organization, in elections today. Pictures and qualifications of the Leonides candidates will be placed at the polls, according to Ruth Hammell, elections chairman.

## H Ec Weekend Will Feature Art Professor

Edward L. Mattil, assistant professor of art education, will discuss "Developing Creative Ability in Children" during the Home Economics Spring Weekend April 9 and 10.

In presenting ways in which children can be encouraged in healthy creative growth, Mattil will discuss the selection of creative materials which are most effective at different age levels.

He will also speak on obstacles which frequently stand in the way of proper creative development, common phenomena which occur in drawings and paintings of children, and their implications in respect to other areas of growth.

He will illustrate his talk with typical examples of children's art work.

Mattil, who received his B.S. and M.A. degrees at the University, has taught in Maryland and Philadelphia, and was head of the Art department in the State College area schools.

He is president of the Pennsylvania Art Education Association and advisory editor of "School Arts Magazine." In addition he is the author of a number of articles on art education. This summer he will teach at the University of Southern California.

## Students Eligible For \$100 Ag Grant

Junior and senior students in agriculture may apply for the KDKA \$100 agricultural scholarship at the office of the Dean of the College of Agriculture, 111 Agriculture.

The scholarship will provide students with an opportunity to compete with similarly recognized students from Ohio State University and West Virginia University for a 3-month summer job with the radio station's Agricultural department.

The scholarship, to be completed by April 15, will be awarded on the basis of character, leadership, scholarship, and need.

## Co-Edits

### Sigma Sigma Sigma

Wilmer E. Kenworthy, director of student affairs, was speaker at the formal installation banquet of Sigma Sigma Sigma Saturday.

Sunday morning, following an initiation breakfast, the local chapter, national officers, and the installing team attended Chapel en masse.

The installation reception was held Sunday afternoon.

### Kappa Delta Rho

New officers of Kappa Delta Rho are Ellsworth Smith, president; John Hershey, vice president; George Biemesderfer, pledgemaster; William Shook, secretary; Carl Snyder, treasurer; Garry Crothers, house manager; Charles Groff, caterer; Harry Blansett, Tribunal board; Bernard Carson and William Kern, chairmen.

### Delta Sigma Phi

Delta Sigma Phi recently initiated, Gerald Malatino, Donald McKittrick, James Murphy, Joseph Palo, Earl Shumaker, and John Sieber.

Polls will be open from 9 a.m. to 5:30 p.m. today in Atherton, Simmons, McElwain, Thompson, and McAllister Halls. Independent women living in Grange, Woman's Building, and in town may cast ballots in McAllister Hall.

Candidates for vice president of Leonides are Ruth Oram and Helen Spagnola. Sara Jane Henry, Joanne Eddy, and Loretta Hunter will run for recording secretary, and Constance Taylor and Peggy Trevor for corresponding secretary.

**AIM-Leonides Banquet**  
New officers will be installed by outgoing president, Hilda Hogeland, at 6:30 p.m. Monday in the first floor study lounge of McElwain Hall. Leonides will join the Association of Independent Men in honoring the new officers of both organizations at a banquet in May.

The elections committee will meet at 6:30 p.m. tomorrow in the second floor lounge of McElwain Hall to count votes. Members of the elections committee are Doris Deets, Annaliese Blerker, Deborah Dean, Joyce Shusman, Lois Nissley, and Joyce Mulet.

**NISA Convention**  
Five members of Leonides will attend the National Independent Students Association convention April 12 to 15 at Cornell University. Joyce Shusman, newly appointed chairman of Judicial, Ethel Wilson, eighth semester home economics major, and Miss Buchanan will serve as discussion leaders for schools with over 5000 enrollment. Approximately 40 schools will attend the three-day convention.

Miss Spagnola and Julie Maybury, second semester business major, will also attend the convention. Miss Maybury will represent Penn State as a candidate in the annual NISA sweetheart contest.

## Prexy Appoints Hipple To New Research Post

President Milton S. Eisenhower has appointed John A. Hipple, director of Mineral Industries Experiment Station, to the recently established position of assistant dean for research in the College of Mineral Industries.

Hipple will continue as director of the experiment station, a position he has held since March 1, 1953.

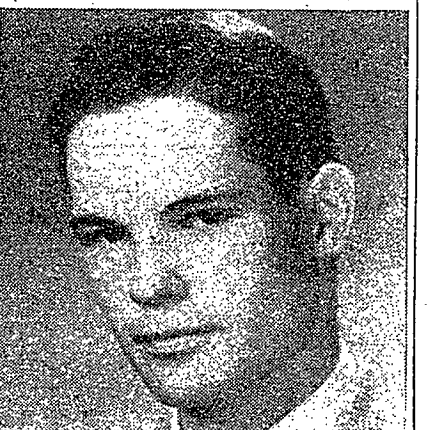
## Philotes Initiation Planned for Monday

Initiation for Philotes will be held at 6:30 p.m. Monday in the second floor lounge of Simmons Hall.

Pledge duties were assigned last Monday. Plans for participation in the Spring Carnival will be discussed.

Calculations indicate there are about 70 million pounds of nitrogen in the air around the earth.

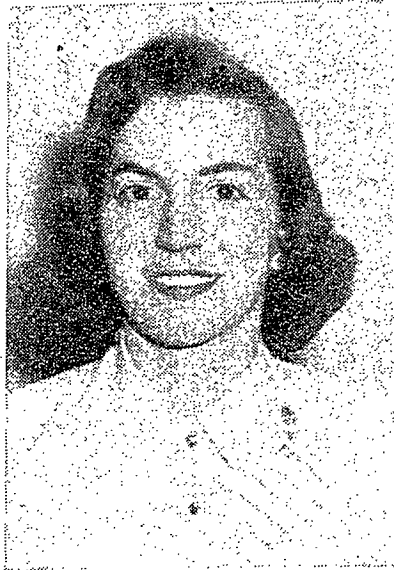
## Farm Editor Cited In Old Gold Award



Nice going, Donald White! A carton of Old Golds for very competent editing of Penn State Farmer and Penn State Dairyman.

Old Gold "blue pencils" all the double talk and simply offers a Treat instead of a Treatment. King Size or Regular, Old Golds are a real smoking pleasure, so why not try them, today!

Advertisement



Betty Buchanan



Loa Joan Packard

# Coeds Get Permission On Bermuda Shorts

Women students will be allowed to wear Bermuda shorts on campus when going to and from recreational activities, according to a resolution passed by the Senate of Women's Student Government Association last night.

The resolution was an amended version of a motion passed yesterday by the Senate committee on student affairs.

According to the new regulations, coeds will be permitted to wear Bermuda shorts on campus when going to and from recreational activities, without wearing a long coat over them, as was formerly required.

### Must Use Side Entrances

However, coeds will be required to use side entrances to dormitories when wearing Bermuda shorts and will not be permitted to wear them in dormitory lounges.

Bermuda shorts will also be prohibited in classes, in town, and in dormitory dining halls. Nancy White, retiring WSGA president, explained the dining hall prohibition. She said the Senate committee felt, that since new and more strict dress rules are being enforced in men's dining halls, action allowing women to wear Bermuda shorts in the dining halls "would be a step backwards."

### Does Not Include Golf Course

Recreational activities to which coeds may wear Bermuda shorts were defined as tennis, picnics, and so forth. Bermuda shorts will not be permitted on the golf course.

Miss White said that restrictions against Bermuda shorts are included in present golf course regulations. She explained that Ernest B. McCoy, dean of the College of Physical Education and Athletics, said that since the course is used by many professors and townspeople and because of its location along route

## 'Matrix' Deadline Set for Saturday

Noon Saturday is the deadline for women students invited to the Matrix Table to make reservations at the Student Union desk in Old Main. Cost of reservations is \$2.75.

The card enclosed with each invitation will be stamped at the Student Union desk to certify that the holder has made a reservation. Returning student teachers may make reservations for the dinner until 5 p.m. Monday.

The Matrix Table is sponsored annually by Theta Sigma Phi, women's national professional journalism fraternity.

## Belgian Prof to Speak On Philosopher Today

E. P. Van Breda, visiting professor of philosophy at Duquesne University from the University of Louvain, Belgium, will speak on the philosopher Hasslerl at 2 p.m. today in 129 Sparks.

322, Bermuda shorts could not be allowed.

She added that while the new regulations were not all that coeds had requested, they are "a far cry from what we had before." She stressed that members of Senate should do their best to see that the rules are enforced.

The new regulations will be presented before Freshman Council and the House of Representatives. They will then be explained to coeds through house meetings and bulletin board notices.

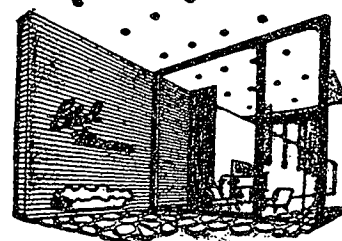
## New England Club Offers Scholarship

A scholarship fund to benefit New England students at the University has been established by the Boston Penn State Alumni Club.

Interest from the fund will be used to provide the first \$25 scholarship to be awarded next year, and when the interest grows to an amount equal to one-half the fees for the freshman year, a second scholarship will be started. This will continue until a scholarship has been established for each of the states of Maine, New Hampshire, Vermont, Massachusetts, Rhode Island, and Connecticut.

## Poly Sci Club to Hear Finch Speak on Weber

Henry A. Finch, associate professor of philosophy, will speak on "Ethics and Politics: Max Weber" at a meeting of the Political Science Club at 7:30 tonight in the Home Economics Living Center.



## Thru the Looking Glass

with Gabbi

Well, here we are again, Oscar and I, Oscar being my panda-bear (not an Academy award) wondering whether my rain slicker will match my gown or this week-end. Let's hope the rain keeps up, so it won't come down. I think our weather is ordered special for big week-ends, probably in cahoots with the cleaners. But some consolation lies in the fact that we are also privileged to have such a store as ETHEL'S—where originality is the keyword.

From the Turkish marketplace comes miniature tin treasure chests, orientally colored and designed in baked enamel (Ali-baba used to keep his most precious women in them for safe-keeping). You'll find scads of uses for one; if not, there are some shaped to hold cookies, candy, cigarettes—and large size waste baskets if you want a den ensemble. For a tiny price of 2.25 you may even find Eartha Kitt singing Constantinople if you open it with care.

### Delights to tickle the epicurian's fancy

is the vast array of sauces, herbs, oils, and other concoctions that look good enough to eat at ETHEL'S. She has, we believe, cornered the market on tasty tid-bits for the gourmet. We noticed some luscious cans of butter cookies and petit-fours that would be ideal to take home to offset the below grade awaiting your arrival. If this won't do it, try strychnine in coffee, your own!

Catch the wooden-covered Old Southern Cook-book there with over 300 old Dixie recipes. At last the secret to making hominy grits. Bet all those rebels in "Bloomer Girl" have bought their copies!

### Well tan my hide

or else my purse and sling it over my shoulder so I can show off an Italian cow-hide purse that's mellowed to perfection. Smooth, roomy, luxurious—and so much more attractive than a plastic bag or bulging pockets.

Just 'nuff space to say see you at ETHEL'S, have a gay weekend and if you're driving, make sure you're in the car. Bye now.

*Ethel Meserov*

112 E. COLLEGE AVE. STATE COLLEGE, PA.

For All Special Occasions . . .  
BANQUETS  
PARTIES  
Call  
**THE Allencrest TEA ROOM**

The Perfect "Air" for J.F.C.  
**JEAN NATÉ**  
cologne  
We Also Carry  
**JEAN NATÉ** Powder  
and Bubble Bath.  
\$1.50 and \$2.75  
plus tax  
**REA & DERICK**