

Coeds Vote Today In WSGA Primaries

May Day attendants and finalists for May Queen and freshman Maid of Honor will be chosen today in the primary election sponsored by Women's Student Government Association.

Voting polls will be located in McElwain, Simmons, Atherton, Thompson, and McAllister Halls. Students from Woman's Building, Grange, and town will vote in McAllister Hall.

Women students will vote only for their class attendant in the primary election. In the finals on Thursday, all women will vote for May Queen and freshman Maid of Honor.

Marriage Guide To Be Speaker At Convocation

Mrs. Charles Henderson, a member of the staff of the Marriage Council of Philadelphia, will speak at the Women's Student Government Association convocation at 7 p.m. tomorrow in Simmons lounge.

Her topic will be "College Graduate: Wife and Working Woman."

New officers and senators of WSGA will be installed at the convocation. They are Patricia Ellis, president; Kay Kingsley, vice president; Arlene Borgeson, secretary; Susan Hill, treasurer; Gail Smith, senior senator; Patricia Dickinson, junior senator; Martha Michener, sophomore senator; and Nancy Van Tries, town senator.

In addition to her work on the marriage council, Mrs. Henderson teaches a course in preparation for marriage at the College for Women of the University of Pennsylvania. She received her B.S. degree in education and her M.A. degree in psychology at the same university. She has served as personnel officer and assistant to the dean of the College for Women for 12 years.

Mrs. Henderson is the mother of three children, a daughter, 14, and twin sons, 7.

The WSGA convocation is held annually each spring. It is open to the public. A coffee hour will follow Mrs. Henderson's speech.

Memorial Fund Provides Awards

Between 12 and 20 high school seniors who will be enrolled as freshmen next year will receive scholarships through the alumni memorial scholarship fund, President Milton S. Eisenhower announced today.

The fund was established last October in memory of Penn State alumni who were killed in World War II.

The District Alumni Clubs of the University, which will be the nominating bodies, will consider only those seniors who rank in the top fifth of their class. The final selections will be made by a special scholarship committee.

The scholarships will provide University fees for one year, although the out-of-state tuition will not be included if an out-of-state student is selected.

It is expected that contributions to the 1954 fund will increase the number of scholarships.

LeSage Receives Award From French Government

Laurent LeSage, professor of Romance Languages, has been made "officier de l'Academic," an award given by the French government to professors who have obtained distinction in their field.

LeSage will go to Philadelphia in the near future for the official ceremony of decoration.

Something Special For Your Hair!!
Try Our OWN New Concentrated Shampoo with the Lanolin Base... One supply easily lasts for 20 applications.
DABBS' BEAUTY SALON



The polls will be open from 10 a.m. to 5:30 p.m. They will be closed during the dinner hour with the exception of the one in Thompson Hall. They will re-open at 6:30 p.m., remaining open until 7 p.m.

Senior women who wish to be in the hemlock chain may sign up at the polls during the primaries or at the final election on Thursday.

Ten candidates are competing for the honor of being crowned May Queen on May 8. Three candidates will be chosen to run in the finals Thursday. The two runners-up will represent the senior class as attendants to the queen.

May Queen Candidates
The candidates are Anna Mae Webb, music education; Ruth Israel, psychology; Nancy Hagy, education; Barbara Alrich, home economics; Barbara Klein, arts and letters; Jean Wyrrough, arts and letters; Kathleen Sullivan, education; Ona Kay Lee, journalism; Marilyn Buzby, pre-medical; and Jane Montgomery, journalism.

According to Penn State tradition, a freshman woman will crown the queen. Three women will be chosen to compete for freshman Maid of Honor. The candidate receiving the highest number of votes will be Maid of Honor. The two runners-up will represent their class as attendants.

Maid of Honor Candidates
The candidates for freshman Maid of Honor are Diedra Bray, education; Joan Gaddy, education; Anne Elder, arts and letters; Mary Elizabeth Anderson, home economics; JoAnn Cummings, business administration; Sally Lewis, home economics; Janice Brenner, education; Mary Lou Dubow, home economics; and Kathleen Stroup, business administration.

Two junior women will be chosen at the primaries to precede the queen through the hemlock chain formed by the senior women.

Candidates for Junior Attendants
The candidates are Faith Gallagher, arts and letters; JoAnne Bygate, animal husbandry; Mary Lou Schultz, business administration; Nancy Schminky, music education; Dorothea Bourne, education; Polly Moore, home economics; Connie Sawyer, political science; Rosemary Short, arts and letters; Phoebe Powell, home economics; and Virginia Chesley, arts and letters.

Two sophomore women will attend the queen. Sophomore candidates are Joyce Gardner, arts and letters; Eileen Marcelina, education; Patricia Brown, home economics; Lillian Melko, education; Myrtle Harris, education; Ruth Kaplan, arts and letters; Jane Lamont, bacteriology; Joan Gray, education; Shirley Mix, physical education; Fay Hilberg, business administration; Marilyn Myers, arts and letters; and Joanne Montgomery, arts and letters.

Theta Sigma Phi
Theta Sigma Phi, national women's professional journalism fraternity, will pledge six women at 7 tonight in 213 Simmons.

Panhel Will Install Moreman President At Banquet Tonight

Louise Moreman, Delta Zeta, will be installed as president of Panhellenic Council at a banquet at 6:30 tonight in the Eutaw House.

Other new officers are Joanne Caruso of Delta Delta Delta, vice president; Polly Moore of Delta Gamma, corresponding secretary; Barbara Woodward of Kappa Delta, recording secretary; and Nina Finkle of Alpha Epsilon Phi, treasurer.

Retiring officers are Ellen Wandel, president; Joan Levinsohn, corresponding secretary; Nancy Barth, recording secretary; and Janice Ray, treasurer. Miss Moreman, as retiring vice president, automatically becomes president.

New officers will not assume duties until the first meeting in April.

Buses will leave at 5:30 p.m. from McElwain Hall for the banquet.

Co-Edits

Kappa Sigma

Kappa Sigma recently initiated George Luse, Durwood Rorie, Stephen Wyman, Harry Link, John Flynn, and Geoffrey Clouser.

George Harshaw was recently appointed IFC representative, and Joseph Adams was appointed publicity chairman.

Alpha Sigma Phi

Alpha Sigma Phi recently entertained Delta Gamma at the chapter house. The fraternity pledges provided a skit and dancing and refreshments followed.

New pledges of Alpha Sigma Phi are Thomas Desch, Charles Daniels, and George Kitts.

Beta Theta Pi

Phi Mu was recently entertained by Beta Theta Pi at the chapter house. Entertainment was followed by dancing and refreshments.

Glee Club Tour Includes 5 Cities

Charles W. Rohrbeck, general manager of the Penn State Glee Club, has announced that five cities will be included in the club's annual tour late next month.

The schedule includes Greensburg, April 26; Pittsburgh, April 27; Greenville, April 28; Buffalo, N.Y., April 29; and Elmira, N.Y., April 30. Penn State Alumni groups in each community will sponsor the concerts.

The Club, directed by Frank Gullo, is composed of 55 voices. The Varsity Quartet and the Hy-Los, a part of the club specializing in light, comedy numbers, will appear on each program.

Shelton Will Speak At H Ec Weekend

Mary Shelton, associate professor of clothing and textiles and director of the Ellen H. Richards Institute, will discuss "What You Can Expect of the 'Miracle' Fibers," during the Home Economics Spring Weekend, April 9 and 10.

"While the new synthetic fibers do have many advantages, they are not miracles," Dr. Shelton believes. Many of the claims presented by the manufacturers are for advertising purposes only, and are not based on accurate facts.

The wearing qualities of the synthetic fibers depend upon the use given to them by the consumer. If properly selected and cared for, they will give satisfaction to their owner. In order for the consumer to buy and use wisely, he must have an accurate understanding of the fibers. He must know what they can do and what they can't do. Education for the consumer by the manufacturer, therefore is an important factor which must be developed further in the future.

Dr. Shelton received her B.S. degree, M.S. degree, and doctor of education degree at Teachers College, Columbia University. Before coming to the University, she had been associate professor of textile and clothing in the College of Home Economics at the University of Tennessee, where she also headed the program of research in textile chemistry. From 1941 to 1944, Dr. Shelton was employed by the Ciba Co., Inc., doing research in the development of finishes, detergents, and dyes in relation to new fabrics and fabric construction.

Before going to the University of Tennessee, she was a research associate with the American Association of Textile Chemists and Colorists. She is a senior member of the American Chemical Society and one of the American Standards Association on the standardization of hotel textiles, and is on a committee of the Department of Commerce on the revision of testing methods for consumer goods.

Magazine Holds Writing Contest

Penn State coeds who have a literary flair are eligible to compete in the annual "Mademoiselle" college fiction contest and in the Mademoiselle Dylan Thomas poetry contest.

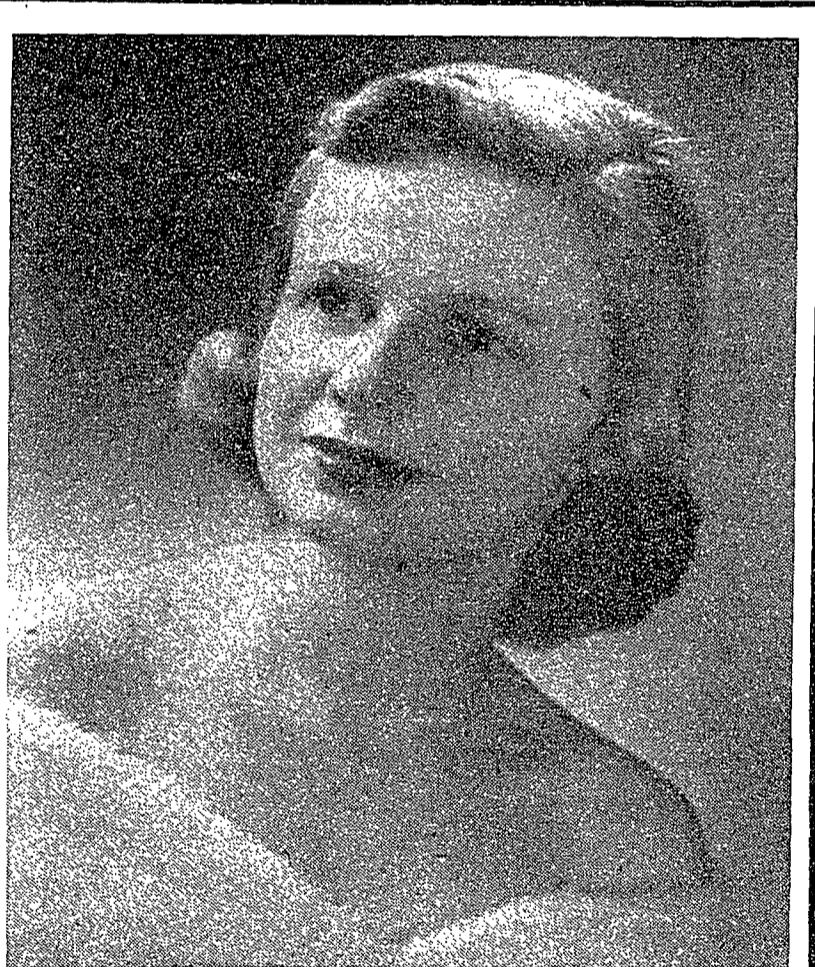
Undergraduate writers of the two best stories will be awarded \$500 each. Awards of \$100 will be presented to the two women who have submitted the best poems in the eyes of the editors of Mademoiselle. The stories and poems must be submitted by midnight April 15.

Women undergraduates under 26 years of age may compete in the fiction contest. Stories may be submitted that have appeared in college publications, but are not acceptable if they have been published elsewhere. They must be at least 300 words in length, but may not exceed 5000 words.

Entries must be typed, double-spaced, and on one side of the paper only. The contestant's name, home address, college address and college year should be clearly marked. Mademoiselle will return the manuscripts only if a stamped, self-addressed legal-size envelope is included.

Not more than three poems may be entered in the poetry contest by one writer. The entry rules are the same as those for the college fiction contest.

Entries are to be submitted to The College Fiction Contest, or to the Dolan Thomas Award, Mademoiselle, 575 Madison Avenue, New York 22, N.Y.



MISS BARBARA WERTZ, Gamma Phi Beta *Okay Joe?*

If any of you remember, it was almost 2 years ago that Bobbie was previously an OK Joe girl. This hardly changed in all that time, so we thought it only fitting to have Bobbie become the first girl to be an OK Joe twice.

No, it's not that we're lazy; we just haven't had time to change the display in the Western Union window.

Sometime this week there will be a selection of prints in color which should be an eye-popper.

By the way, after being booked up solid on composites for the past 6 months, there will be an opening for one in about 10 days.

After 2 years of experimenting with its potentialities on portraits, we can now offer the incomparable Belgian Suede as an optional paper surface for something truly different.

Party of the week—Gamma Phi Beta.

Sincerely,
bc

THE LION STUDIO



Tailored and Trim . . .

and flattering to you— are our latest styles in blouses for spring. Take your choice of long, short, or sleeveless styles, in gay prints or solid colors. Look fresher than a daisy in your new blouse for spring.

Cotton, Orlon, Nylon, Dacron and Orlon & Cotton



Clearfield's