

Final WSGA, WRA Elections Scheduled for Today

Girls Will Vote On Quill Girl, Election Issue

Editorial on page 4

Final elections for the Women's Student Government Association and the Women's Recreation Association will be held today from 10 a.m. to 7 p.m.

In addition to voting for candidates for WSGA and WRA offices, women will vote on releasing the final election figures and for Quill Girl, who will be honored at the Matrix Table sponsored annually by Theta Sigma Phi, women's national professional journalism fraternity.

Women will vote in their dormitories, except for those living in Grange Dormitory, Woman's Building, the cottages, and town. These women will vote in McAllister Hall.

All May Vote

All women may vote for WSGA president, vice president, and treasurer and for all WRA offices except sophomore representative. Only freshmen may vote for sophomore representative.

Juniors may vote for WSGA senior senator, sophomores may for junior senator, and freshmen for sophomore senator. Town women may vote for town senator.

Women will vote whether they wish WSGA to release its final election figures. According to the motion passed unanimously by WSGA Senate, if the vote shows women wish the final election figures released, WSGA will release them tonight.

WRA Opposes Release

Barbara Wallace, WRA president, said Tuesday WRA did not favor releasing its figures but would probably do so if the women's vote indicates they wish them released.

Because of the result of a vote taken in 1951 in which women said they did not wish the figures released and because women may see the figures in the Dean of Women's office, 105 Old Main, the figures have not been released.

Arlene Borgeson, sixth semester home economics major, and Patricia Ellis, sixth semester arts and letters major, are candidates for the WSGA presidency.

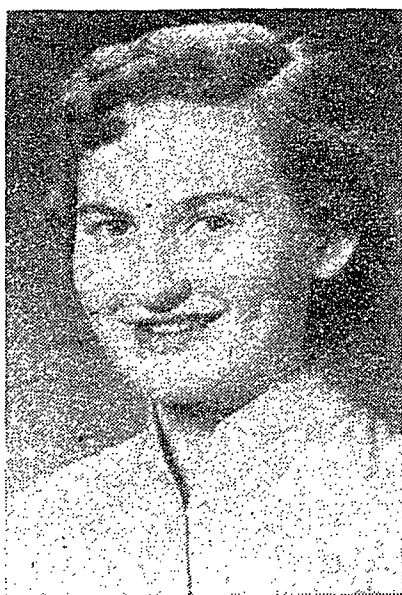
Candidates for WRA president are Eleanor Gwynn and Mildred McCowan, sixth semester physical education majors.

Veep Candidates

Carolyn Cunningham and Kay Kingsley are candidates for WSGA vice president and Mary Buchanan and Peggy Davis are candidates for WRA vice president.

Candidates for WSGA treasurer are Dorothy Glading and Susan Hill. Senior senator candidates are Carol Jenks and Gail Smith.

Candidates for junior senator are Patricia Dickinson and Roberta Sankey and for sophomore senator, Martha Michener and Suzanne Scholl. Nancy Bunnell and



Arlene Borgeson



Patricia Ellis



Eleanor Gwynn



Mildred McCowan

WSGA Presidential Candidates

WRA Presidential Candidates

WSGA Senate Appoints Shusman Judicial Head

Joyce Shusman, co-chairman of the Joint Freshman Customs Board, was named next year's chairman of Judicial by the Senate of Women's Student Government Association last night.

Miss Shusman, a sixth semester education major, will succeed Mary Pettigout, eighth semester home economics major, as Judicial head.

Miss Shusman served this year as a junior representative on Judicial. To be eligible for the chairmanship, one year's experience

on Judicial is required. Miss Shusman was the only one of the four junior representatives on Judicial able to fill the post.

Women's Student Government Association survey sheets were distributed to coeds in the dormitories last night, Jane Reber, town senator, reported.

The survey forms cover all fields of WSGA activity on campus. Coeds are asked to state interest preference in WSGA activities, including the marriage conference, all-University sing, Junior-Senior faculty reception, Big-Little Sister tea, and convocation.

In addition, they are asked to state their opinion on the proposed activity point system, whereby coeds would receive points for campus offices. Each coed would be limited in the number of points she could accumulate.

Nancy Van Tries are candidates for town senator. The runnersup for WSGA president and vice president will be secretary and a junior senator, respectively.

Candidates for WRA secretary-treasurer are Miriam Jones and Sheila Nearing. Intramural chairman candidates are Marilyn Fisher and Shirley Fry.

Virginia McDonald and Martha Patterson are candidates for assistant intramural chairman and Barbara Nicholls and Alwilda Van Atta are candidates for WRA sophomore representative.

Women eligible for Quill Girl are Nancy White, WSGA president; Miss Wallace; and Betsy Seigler, Mortar Board president.

Panhel Presents Final 'Fireside'

The fifth and final discussion in the fireside series sponsored by Panhellenic Council to acquaint freshman women with the sorority program was held Tuesday for women in Atherton Hall.

About 30 of the freshman women in Atherton attended the discussion, Jane Bishop, chairman of the series, said.

Miss Bishop said she believed the discussions were "a success from the freshman viewpoint as the information they received will aid them in rushing next fall."

The talks covered scholastic av-

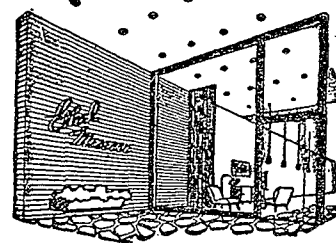
(Continued on page eight)

Centre County's biggest weekend treat!

ON APPROVAL Center Stage

Don't wait!

Get tickets now for this Friday night at Student Union



Thru the Looking Glass

with Gabbi

Hail to the Lions! Roar you crazy cats—we're a victorious people—so far! Strange things are happening—like coeds getting 1:30's on Sunday nights and me getting a 3 in a soc. quiz. March 14 will be a day in history to remember just like March 17—but this won't occur yearly we're sure! But let's get down to facts—and give some notes for your memoranda that you really shouldn't forget.

Not the lights of Broadway... But enough for studying or playing bridge because they shed direct light depending on the way you twist the neck—it's not ostriches we're speaking of, but study lamps with an accent on modern design and plenty of seaability. The colors are restful—coral, blue, cream, and prices are reasonable—\$3.95. That's cheap enough to get lit, isn't it? They're compact jobs that will add charm to your room besides focusing attention on your cluttered desk.

Swing low sweet chariot... Or high, as the case may be. But if you've got a favorite little someone (we don't mean short boy friends) like a nephew, niece or cousin you dote on—ETHEL'S has what are known as Swing-Dings in the form of a circus or rocket mobile. They're fun (for the feeble-minded) to put together and fascinating even for adults (if the shoe fits—wear it, right Jackson?) A modern toy that's a sure conversation piece.

Money from home... And all your other gear can be kept in a lovely new faille purse from ETHEL'S. Not oversized, but demure and tailored in several styles—the favorite of the moment being clutch style. We think they're one of spring's keynotes—moreover we'd like you to see them. Silas Marner checked them and put his OK on them. Must rush now—am helping Phi Ep repair their house so they won't be caught with their roof down when the Froth photographer gets loose again. Meanwhile, reserve Meserve's for your special shopping.

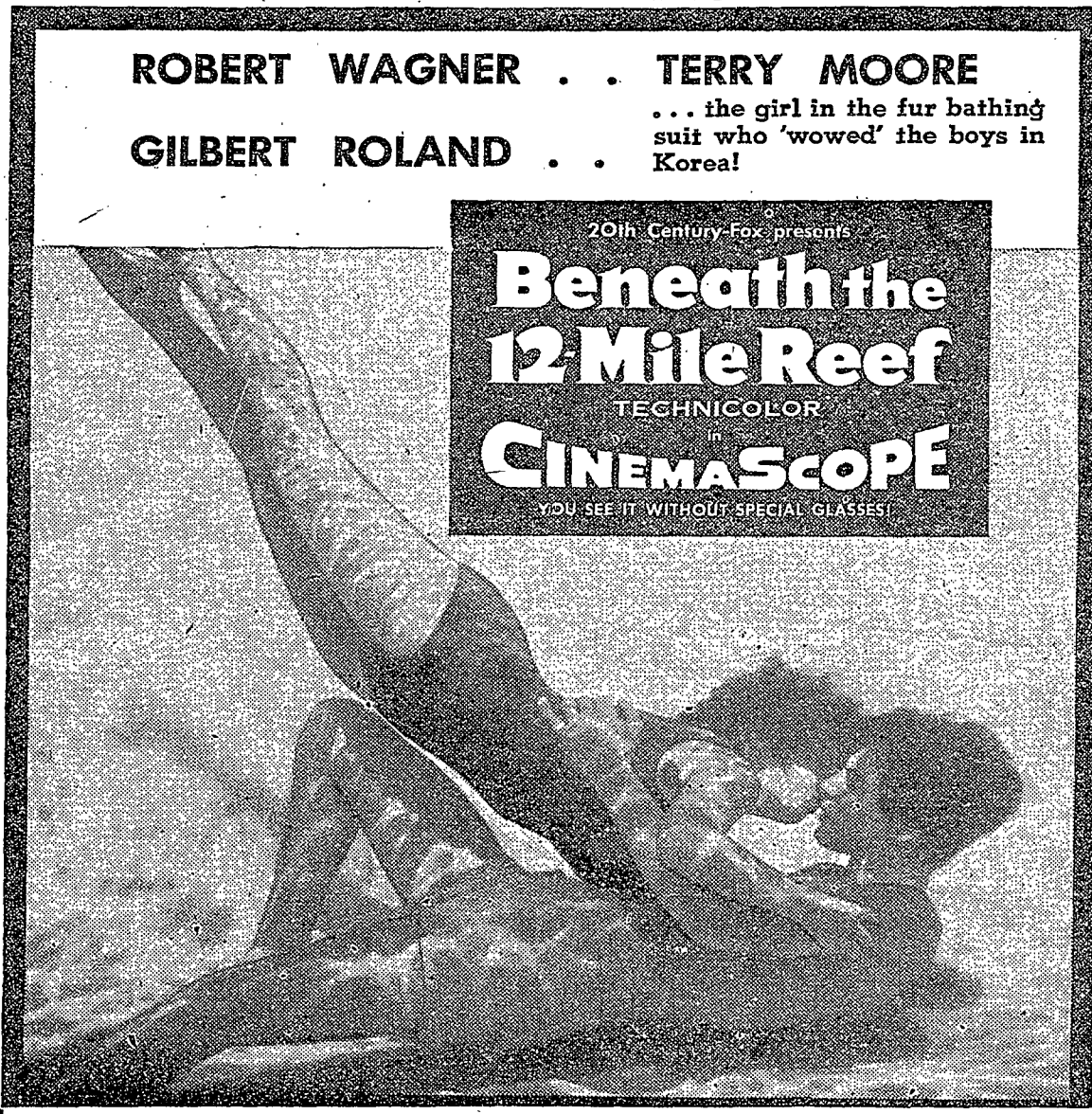
Ethel Meserve

112 E. COLLEGE AVE. STATE COLLEGE, PA.

ROBERT WAGNER . . . TERRY MOORE

GILBERT ROLAND . . .

... the girl in the fur bathing suit who 'wowed' the boys in Korea!



20th Century-Fox presents
Beneath the 12-Mile Reef
TECHNICOLOR
CINEMASCOPE
YOU SEE IT WITHOUT SPECIAL GLASSES!

Stanley-Warner
• NOW SHOWING • CATHAUM
—PRICES INCL. TAX—
Adults: Eve. & Sat. Mat 76c
Mat, except Sat. . . 65c
Children: All times . . . 25c

Today WARNER theatres
Cathaum
"BENEATH THE 12-MILE REEF"
CinemaScope
Robert Wagner, Terry Moore

State
Continuing Friday!
"THE GLENN MILLER STORY"
James Stewart, June Allyson

Nittany
Supreme Adventure!
"THE CONQUEST OF EVEREST"