

53 Named To Home Ec Dean's List

Fifty-three have been named to the dean's list of the College of Home Economics for the fall semester by Grace M. Henderson, dean. One student, Janice Holm, sixth semester, attained a 3 average.

Seniors on the dean's list are Rose Kaltenborn, 2.66; Audrey Hohman, 2.81; Audrey Nash, 2.62; Marian Cooper, 2.81; Mary Keane, 2.81; Harriet Freeze, 2.94; Dorothy Farrand, 2.5; Nancy Gemmill, 2.61; Shirley Johnson, 2.57; John Trippe, 2.64; Joan Learn, 2.56; Lorna Chapman, 2.62; Sondra Feinberg, 2.66; Aldino Pierotti, 2.55; Eleanor Griffith, 2.62; Susan Thomas, 2.71; Lucy Bamberger, 2.62; Jane Ifft, 2.6; Lorraine Mondrick, 2.53; Ethel Sandson, 2.66; and Irene Buck, 2.56.

Juniors are Miriam Olander, 2.5; Polly Moore, 2.64; Marian Romberger, 2.66; Joan Freyler, 2.5; Jane LaCoe, 2.55; Marianne Herold, 2.52; Anne Saylor, 2.82; Martha MacDonald, 2.5; and Arlene Borgeson, 2.68.

Sophomores are Roberta Sankey, 2.64; Judith Walter, 2.61; Patricia Pifer, 2.58; Shirley Fry, 2.7; Faith Watson, 2.5; Alice Kinch, 2.5; Elaine Giltman, 2.82; Doris Wenger, 2.7; Ellen Judd, 2.5; Marie Jordan, 2.58; Francis Hanley, 2.52; Marian Ludwig, 2.5; and Joyce Barger, 2.75.

Freshmen are Valerie Fife, 2.62; Mary Anderson, 2.81; Betty Seider, 2.93; Marie Ayers, 2.81; Dorothy O'Conner, 2.5; Gail Rosenbloom, 2.55; Audrey Neff, 2.56; Miriam Jones, 2.75; and Cassandra Cobb, 2.82.

University, Altoona Groups Back Institute

The University has joined with the Altoona school district and the Altoona Chamber of Commerce in sponsoring the Consumer-Retailer Education Institute to be held Tuesday in the Altoona High School.

Miss Lydia Tarrant, in charge of Home Economics extension, will act as moderator of the consumer-retailer panel to be held in the afternoon. Miss Bernice Tharp, extension clothing specialist, will participate as one of the consumers. Joseph F. Krawieck, instructor of clothing textile research, will be on the retailer panel and answer questions on the care of fabrics. Miss Gertrude Griffin, Penn State's extension representative for Blair County, is a member of the committee on arrangements.

Nationally known fabrics experts will speak at the evening session. A display of fabrics, new types and old, which will be offered for sale during the year, will be shown.

The institute will conclude with a fashion show.

Checker Match To Begin Friday

The Checker Club will sponsor an open checker tournament beginning Friday at the Temporary Union Building, Robert Rush, president, has announced.

The tournament will consist of three divisions—a major and a minor division for men and a women's division. Players eliminated in the first two rounds of the tournament will be placed in the minor division.

Prizes will be awarded to the first and second winners of each division.

Foods Stores Building To Hold Open House

An open house tour of the Foods Stores Building will be held from 1:30 to 3:30 p.m. Saturday.

The tour will be sponsored by the All-University foods committee and the University Food Service.

Anthony Tornetta, president of the committee, said visitors will be taken through the bakeries, butcher shop, accounting department, storage facilities, and experimental food kitchen.

Weather Job Interviews Set

Students interested in summer employment with the U.S. Weather Bureau in the Arctic will be interviewed tomorrow by Earnest A. Wood, bureau representative. Arrangements for an interview may be made by seeing the division of meteorology in 322 Mineral Industries.

Since 1949 the University has participated in recruiting students for resupply and general construction work with the bureau.

Ricker to Speak To IFC Tonight

The Interfraternity Council will meet at 7:30 tonight in 219 Electrical Engineering.

President Thomas Schott said Ralph R. Ricker, assistant to the dean of the College of Physical Education and Athletics, will discuss the subsidies paid to fraternities housing athletes. The question of raising the amount was voiced at the last IFC meeting.

ACEI to Meet Tonight

The Association of Childhood Education International will meet at 7 tonight in the Home Economics nursery school. Edward L. Matill of the Art department and Elizabeth Yeager of the Home Economics department will talk to the group.

Centennial--

(Continued from page one)

on campus during 1955, Mueller said. He said he expects the number to exceed 28,000 when the schedule is complete. The largest group to visit campus will be the American Society for Engineering Education conference which will draw 2500 delegates from June 19 to 24, 1955, he said. Attendance of other groups will range from 15 to 1500, he said.

Mueller said the Office of Conference Coordinator under Fishburn has been set up to assist groups in making use of University facilities. He will assist groups planning to hold conventions on campus to register the occasions and to secure necessary facilities.

Mueller said 13,248 conference delegates are expected to stay in the University residence halls, and 9220 of these will be served in University dining halls.

About 3500 visitors will stay at the Nittany Lion Inn and others in hotels, motels and private homes, he said.

Senate Will Discuss Student Union Name

A name for the Student Union building will be discussed by Senate of the Women's Student Government Association at 7 tonight in the WSGA room in White Hall.

Committee chairmen will report on the marriage conference to be March 9 to 11 and the WSGA elections.

CLASSIFIEDS

FOR SALE

1951 SHULTZ TRAILER, 26 ft. completely furnished. Call A. Zaborny, 8-9094 after 5 p.m. Penn State Trailer Camp.

1937 CHEVROLET 2-door Radio and heater, clean, good condition. Call ext. 263 after 6 p.m. Ask for Les.

1947 CHEVROLET Fleetmaster 4-door sedan, R&H, new tires, exceptionally clean, 20 miles per gallon. \$445. State College 4712.

1939 BUICK—R&H, good condition, good tires, perfect family or road car. \$195. Joe Hill, Ph. 8-5051 ext. 790.

DOUBLE BREASTED Tuxedo. Size 39-40. \$25.00. Excellent condition. Call State College 3-8714 after 5 p.m.

1946 DODGE 2-door sedan priced reasonably to sell. Contact Lew Ripley, Nittany 24-7 ext. 284.

HAVE WALLET-SIZED photos made from your portrait. 20 for \$1.25. Also copy special from any old or new negative and 5x7 print—\$1.00. Extra prints, .35 ea. at Centre Co. Film Lab., 122 W. Beaver Ave.

FOR RENT

SINGLE VACANCY in double room for boy. Contact Mrs. Fraser, 234 S. Pugh Street. Centrally located. Phone 7901.

STUDENT TO share large double room with another fellow in new home newly furnished. 1114 W. Beaver Avenue. Phone 2186.

NEW QUIET room in faculty home—immediate occupancy. Private entrance. Male. 201 W. Prospect.

ONE-HALF a room for rent at 138 McAllister street. Call 7137 after 4 p.m.

ATTRACTIVE TWO-ROOM apartment. Completely furnished bedroom and kitchen. Excellent parking facilities. 326 E. College Ave.

NEWLY OPENED furnished rooms for students; baths, showers—back of Weis Market, 224 S. Pugh Street. Phone 8-9147.

ROOM & BOARD

BOARD OR board and room available at Marilyn Hall, 317 East Beaver Ave. Ask for Mrs. Elleard.

WORK WANTED

THESIS, MANUSCRIPTS, etc. typed. Call Sandra Wheeler at ext. 508 before 5:00 evening 8-9180.

IS YOUR typewriter giving you trouble? If so you can have it repaired. Just dial 2492 for pick-up or bring to 633 W. College Ave.

HELP WANTED

LIGHT WORK for room. No firing. Call 7792.

LOST

DARK GREEN cardigan sweater missing Friday from Home Economics building, second floor rack. Mary Showers, 247 Atherton.

RUST SUEDÉ McGregor jacket switched with Monarch of same color last week. Call 2161 ask for Jack.

WILL PERSON who found my ring and wrist watch at the TUB Saturday night please call Gino Mori at 2548.

ONE PHI Sigma Delta fraternity pin; on golf course; near holes 1, 2, 17, 18. Reward. Call Stu Allen, 4409.

MISCELLANEOUS

CHECKER CLUB members sign up at Student Union desk. Old Main or at TUB Friday. Meeting—Friday night 8:00.

RADIO AND TV guaranteed service, prompt and efficient. State College TV. 122 N. Atherton. Phone 8-6021.

WANTED

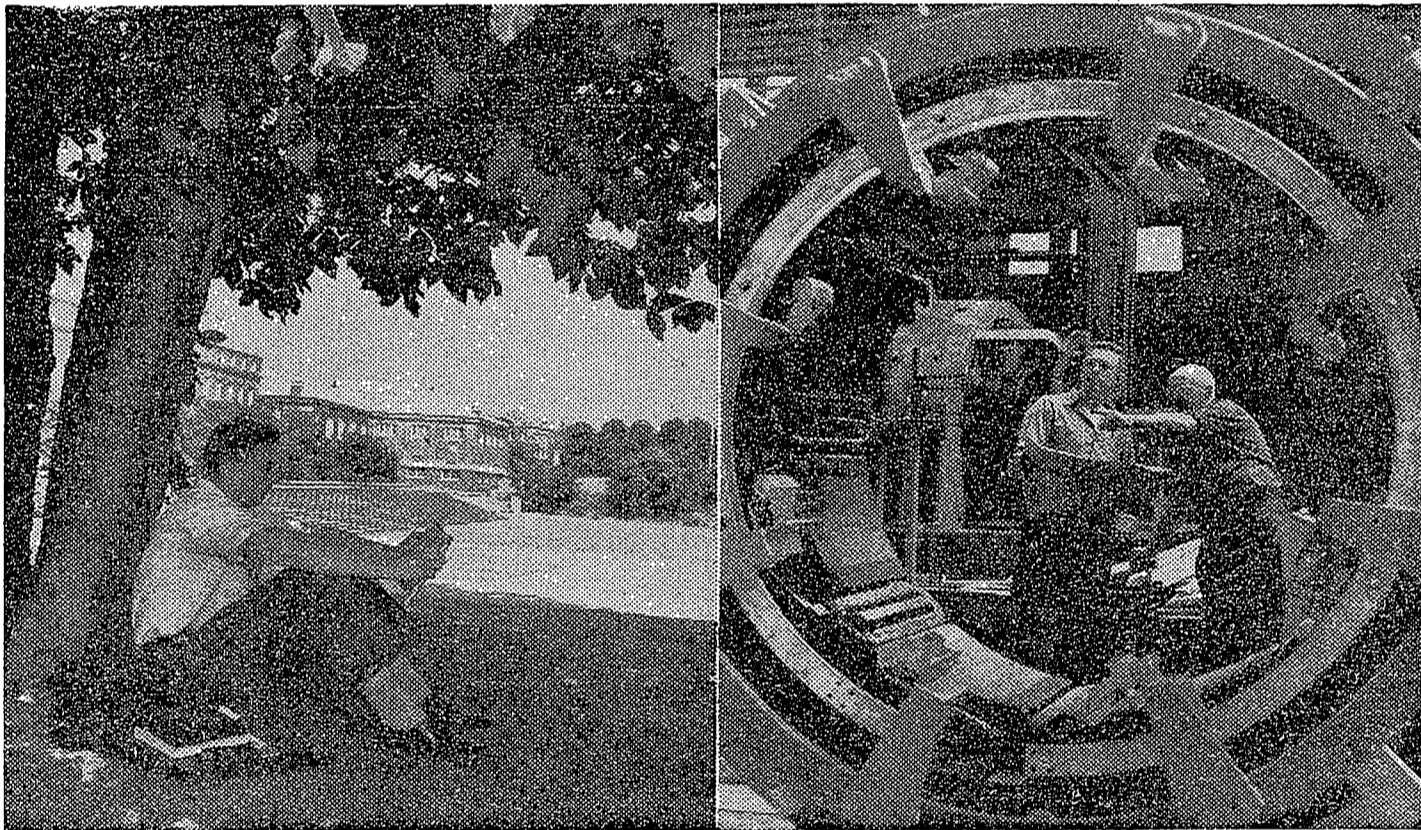
TIRED OF IT ALL? Was last semester's average too much to take? Williamsporter leading west in '49 Ford convertible wants companions to ride shotgun, share driving. Contact George Crouse, 4969 for details.

PASSENGERS WANTED

RICHMOND, VA. or Washington, D.C. Leave noon March 5 return Sunday. Bob Johnson, 126 E. Foster. Phone 4177.

RIDE WANTED

RIDE TO Pittsburgh this weekend for Jerry and 6-week old Collie pup. Call after 7 p.m. Ask for Jerry, 8-6026.



FROM CAMPUS — TO CAREER IS A BIG STEP

When the graduate leaves the college campus to begin his career he is taking an extremely important step. For he is leaving the area of directed-development in college and entering the area of self-development in industry.

Closing the gap between his campus experiences and the realities of earning a living is not easy. The complicated maze of modern industrial society has made this transition a tough task. While the craftsmen of former years grew up with the business, the college graduate of today steps into a strange organization at a relatively high level. He has had no opportunity to understand, through a long period, the methods and operations of the concern.

During his first few years, he is finding his place in the organization—learning its policies and objectives, and at the same time shaping his professional career. He needs all the assistance and guidance he can get.

Here at General Electric, hundreds of young men have found that intensive efforts are made to "bridge the gap"

between college and industry—and to help young professional people realize their goals. Through extensive training programs, classroom study programs, leadership programs, and guidance in professional development, carefully selected young men are prepared for positions of responsibility and leadership in their individual fields.

Providing college graduates with the opportunity to know the Company and find the right job in it . . . giving them high-level, flexible orientation and training . . . offering continued opportunity for professional growth are most important tasks at General Electric. Nothing is more important—for our young professional people are our biggest asset.

If you are interested in building a career with General Electric, see your college placement director for the date of the next visit of the G-E representative on your campus. Meanwhile, for further information on opportunities with General Electric write to College Editor, Dept. 2-123, General Electric Company, Schenectady 5, New York.

GENERAL  ELECTRIC