

# 40 Student Groups Play Santa Claus

Forty student groups are making Christmas a little more exciting this year by sponsoring 22 parties for approximately 500 children in State College.

The University organizations are giving the parties not only to

## Whispering Gallery

(Continued from page four)

branches out to an underwater wildlife study as fresh as summer hike through the Adirondacks, completely lacking the stifling didactics of a classroom film. This is the story of the sea and the life within its bowels from the microscopic snowflake patterns of the diatom to the massive hulks of sperm whale.

For 75 exasperating minutes we travel the watery Oz-like technicolor world 6000 feet under the sea. We gather sponges with divers equipped with short pronged rakes off the coast of Tarpon Springs, Fla., haul in devil crabs aboard a boat in the Pacific, harpoon whales with a modern gun in the Arctic, and descend in a \$15,000 diving bell to a depth of 3 1/2 times the height of the Empire State Building to witness phosphorescent fish and weird habitues of the depths.

With the snorkel and frogman's rubber flappers sportsmen have found new hunting fields. We dive under the surface to explore the marine jungles off the coast of Mexico, spear a barracuda, narrowly escape the wrath of the deadly Devil fish and Portuguese-Man-of-War.

The camera catches a vicious struggle to the death between an octopus and a shark. The octopus strikes with eight menacing tentacles fighting for survival, but the ripping jaws of the shark carry it to death at the bottom of the sea.

Wildlife in and out of water is shown in its natural habitat. In various sequences a Gannet chick is hatched in a nest on the shore; an Arctic seal is given a bath at the Pribilof Island breeding grounds near Alaska; a female turtle drops her eggs into a carefully dug nest in the sand and crawls away to let the sun and

play Santa Claus, but also to create better University and town relations.

Donald Reidenbaugh, student co-chairman, termed this year's project a success. Fourteen more parties are being given this year than last.

Organizations giving parties this week are the Women's Recreation Association, tomorrow; Sigma Alpha Epsilon with Pi Beta Phi and Phi Gamma Delta with Chi Omega, Saturday.

Parties will be given Sunday by Beta Theta Pi and Kappa Alpha Theta; Alpha Zeta and Phi Upsilon Omicron, home economics honorary; Alpha Tau Omega and Kappa Kappa Gamma; and Sigma Nu.

Tuesday's groups include Acacia and Zeta Tau Alpha; Sigma Pi; Delta Zeta and Phi Kappa.

Parties on Wednesday by Phi Delta Theta and Alpha Chi Omega; Phi Sigma Kappa and Kappa Delta; Kappa Delta Rho and Alpha Omicron Pi; Delta Sigma Phi; Alpha Gamma Rho and Gamma Phi Beta; Beta Sigma Rho and Alpha Epsilon Phi; Chi Phi and Phi Mu; Sigma Chi and Tri Vi will conclude the project.

Delta Tau Delta and Delta Delta; Pi Kappa Phi and Delta Gamma; Alpha Xi Delta and Delta Upsilon; Theta Kappa Phi and Theta Phi Alpha gave parties last week.

Groups will be notified when and where to pick up children for the parties.

and finish her job; salmon leap up deep waterfalls in their journey upstream to spawn.

The film ends with the crumbling of icebergs crashing into the icy waters of the North. Since 1940, the narrator informs us, high temperatures have been causing the icebergs to melt gradually. And we are left with the cheerful thought that if all the ice and snow on earth melted, man's steel cities would be hopelessly inundated. This, combined with upheavals within the earth, could spell finis to this tired old planet!

# Nine to Receive At Junior-Senior Tea Tonight

Four students and five members of the administration will be in the receiving line at the annual junior-senior, faculty tea from 7:30 to 9:30 tonight in Simmons lounge.

Faculty members from the Colleges of Education, Home Economics, the Liberal Arts, and Physical Education and Athletics have been invited. Junior and senior women may attend.

**Receiving Line**  
Members of the receiving line will be Marilyn Buzby, chairman; Barbara Werts, vice president of the Women's Student Government Association; Barbara Wallace, president of the Women's Recreation Association; Patricia Pritchard, acting chairman of Judicial.

Wilmer E. Kenworthy, director of student affairs, and his wife; Dean of Women Pearl O. Weston; Mrs. Cordelia Hibbs, assistant to the dean of women in charge of housing; and Miss Mary E. Brewer and Miss Patricia J. Thompson, assistants to the dean of women.

**Floater**  
Members of Alpha Lambda Delta, freshman women's honor society, will act as floaters.

Committee chairmen include Elizabeth George, decorations; Betsy Siegler and Carole Avery, refreshments; Dorothy Osterhout, publicity; Joyce Shusman, receiving line and floaters; Louise Morgan, music; and Maud Strawn, invitations.

The tea is held to acquaint students and faculty members. It is sponsored by the coed coordinating committee of WSGA, made up of vice presidents of the women's groups.

## 'Who's in the News'

Approximately 120 questionnaires have been returned by candidates for "Who's in the News at Penn State," Richard Rau, editor, has announced. The deadline for returning the questionnaires is Saturday.

# Ed Student Council Holds Mixer Tonight

Education Student Council will sponsor the Mistletoe Mixer, Christmas party, at 7:30 tonight in the Temporary Union Building. The mixer is open to students and professors in the College of Education.

The council completed arrangements for the mixer at its Tuesday night meeting. Tags were given out to council members for distribution throughout the College.

## Marsteller to Emcee

Patricia Marsteller, seventh semester education major, will be emcee and Lynn Christy's orchestra will play.

The council voted to report to Dr. Florence Taylor, professor of elementary education, that the poll conducted to see how many students would use the Education library if late hours were invoked revealed a negative attitude among the students. The students believed there was no need for the late hours.

Further progress was made towards the establishment of a College of Education newspaper. Committees were set-up to inquire into business costs and editorial policy of other College papers. President Harry Shank reported that the council will back the new paper, but other students in the College of Education are desired for its publication.

## Paper in February

It is hoped to have the first issue published in the latter part of February. The paper will be distributed to education students free of charge and will consist of four pages. A name will be chosen at a later date.

Secretary Mary Glading announced that students interested in writing for the paper may attend the council's next meeting at 7:30 p.m. Jan. 5 in the second floor of Burrowes Building.

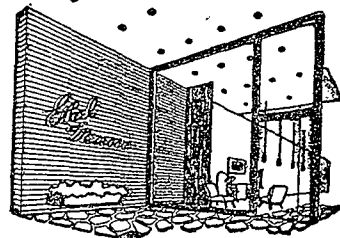
A special committee will meet tomorrow to discuss further arrangements for the proposed coffee hour. It is hoped to conduct the first hour from 3 to 4 p.m. on a day before finals.

# Three to Discuss 'Freedom' Sunday

Three faculty members will discuss "Our American Freedoms: Are They Being Endangered in the Fight Against Un-Americanism?" at the final session of a series of Hillel Town Meetings at 8 p.m. Sunday at the Hillel Auditorium.

The faculty members are Arthur O. Lewis Jr., assistant professor of English literature; David H. McKinley, assistant dean of the College of Business Administration; and Neal Riemer, associate professor of political science.

Rabbi Benjamin Kahn will moderate the program.



# Thru the Looking Glass

with Gabbi

And what do you want for

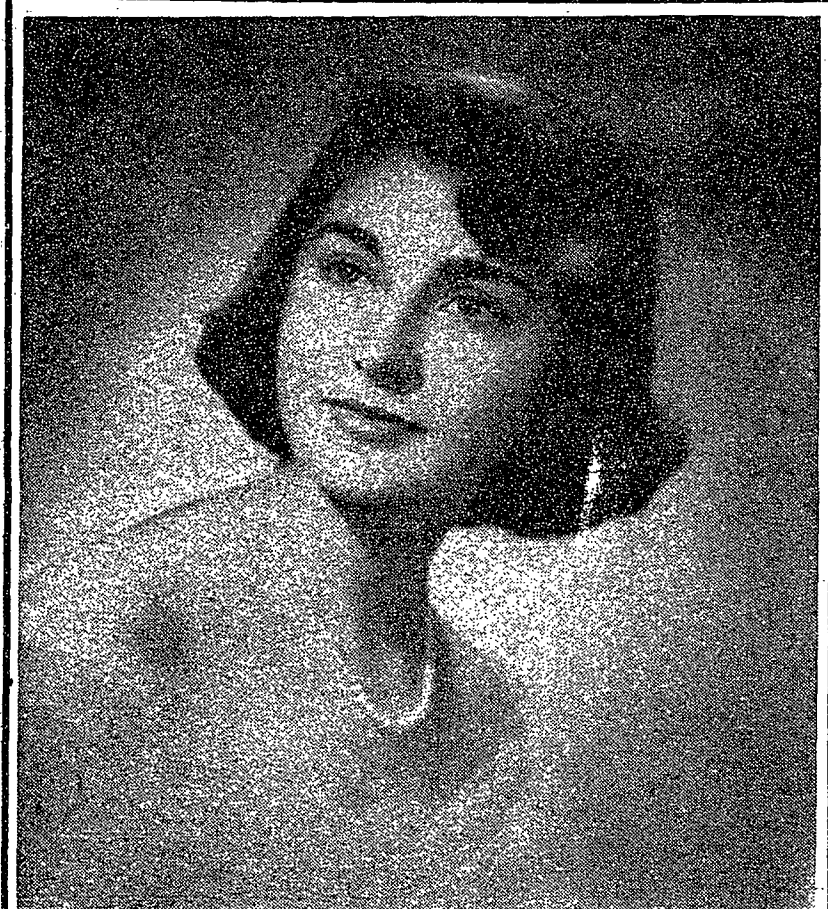
Christmas little girl... and you little boy? If it's something unusual and interesting, tell Santa to stop in at ETHEL'S on his way to your chimney. (By the way, better put red flags on those TV antennae; let's not stick St. Nick). ETHEL and Santa have put their heads together and come up with some whopping ideas to fill those stockings (I knew those knee-socks would be good for something besides boys' disapproval).

Holiday hits for the home...

are lovely sets of copper coasters monogrammed with the family initial, aluminum or glass cocktail shakers and glasses to stir up some holiday spirits. How about a salad bowl, serving platter or coffee keep-warm to make more work for the dishwasher? May we suggest Kem cards, always an attractive addition for any table (or fraternity house). Wash 'em, wipe 'em and they're ready—oops, we mean ready for use.

Gifts the lady of the house will enjoy.

You may think they're dust collectors but mothers will appreciate the forethought you've used in choosing dainty feather-like demitasse cups and saucers to add to her collection. ETHEL'S has discriminating salt and pepper shakers in sterling silver, pretty porcelain or delicate crystal. And for a touch of gayety, paper napkins and matches chuckful of yuletide cheer. Why don't you make ETHEL'S your first stop when you shop-browse, as long as you wish, and if you need help in choosing, Gabbi will be there all this week to help you determine your decisions. Why don't you drop in and say hi; sure would like to meet you...



Miss Sandra Booth, Theta Phi Alpha *Okay Joe?*

Surely, one of the prettiest girls we've seen in Theta Phi Alpha for quite some time. Check Marilyn Schadt at Alpha Gamma Delta party held at Delta Chi.

Best punch was sampled at Alpha Phi Delta. Did you see the girl John Landis had at Sigma Pi party?

Merry Christmas and deep thanks to all you students for keeping our little studio a busy place! Too bad the spirit of Christmas is so commercialized.

Sincerely, bc

THE LION STUDIO

FOR CHRISTMAS GIVE THE SPORTSMAN'S CHOICE!



Ω OMEGA SEAMASTER

Smiles at the roughest treatment! Water and shock-resistant, anti-magnetic... fitted with the world famous Omega automatic movement that winds itself. Your first choice for good looks, accuracy and dependability!

The Omega Seamaster, in lapped stainless steel, 18K white gold applied figure dial, \$85.00, Fed. tax incl. Other Omega watches from \$60. Fed. tax incl.

MUR Jewelry Co.

Open 'Till 9:00 Starting Dec. 10

Not One Cent Extra for Credit



# 'The Perfect Setting for a Candlelight Dinner'

Real pleasure awaits you at our candlelight Dinner Saturday, Dec. 12th. The finest dinners from \$1.00-\$2.00 including:

- Lobster Tails
- Roast Turkey
- Baked Ham

... tastefully prepared and served in a pleasant, relaxing atmosphere.

Why not dine at The Allencrest tonight?

Dinner served from 5-8

THE Allencrest TEA ROOM

105 W. Beaver Ave.

ETHEL Meserve

112 E. COLLEGE AVE. STATE COLLEGE, PA.