

Buckhout Addition Called 90% Complete

The four-story addition to Buckhout Laboratory is between 80 and 90 per cent completed, but officials of the Department of Botany doubt if the new unit will be ready for use by next semester.

Excavation on the addition started in spring, 1951, and the General State Authority awarded building contracts in July, 1951. The tentative promised date for the addition was September, 1952. Steel strikes accounted for much of the holdup, Henry W. Popp, head of the Department of Botany, has explained.

General State Authority is a state agency created for the purpose of borrowing money from the national government for public works construction over the state constitutional debt limit. The money is generally paid by rentals collected from the projects.

The addition is being constructed entirely for the use of the Department of Botany. When completed, the addition will serve a two-fold purpose, according to Popp. It will double the capacity of present laboratory facilities, he said, and will provide badly-needed facilities for the study of biological sciences. The department handles over 1500 students each semester, Popp said.

The addition has a ground floor and three upper floors. In the

ground floor will be located two general laboratories, a culture room, constant temperature rooms, and a store room.

The first floor will contain a lecture room with a 197-student seating capacity, a mushroom laboratory and a forest pathology laboratory.

Department offices now located in Buckhout Laboratory will be moved to the second floor of the new unit. A general laboratory, a fungus herbarium room, and one classroom will be located on the second floor.

The third floor will contain a genetics and anatomy laboratory, a graduate student room, a photographic room, one classroom, and a general botany reading room.

Air Cadet Team

Olmstead Air Force aviation cadet team 57 will visit the University today through Thursday to interview students interested in pilot training or aircraft observer programs of the Air Force.

37 Cadets Join Military Society

The Harry R. Armstrong Squadron of the Arnold Air Society initiated 37 advanced senior and junior air cadets recently at Delta Tau Delta. Lt. Colonel Jack W. Dieterle, professor of air science and tactics, spoke at the initiation.

Initiates are Paul Asplundh, George Black, Paul Boyd, Robert Broomfield, James Butterbaugh, Bernard Carson, Richard Carson, Jack Conner, Thomas Dolan, Dwight Edwards, Charles Emig, Robert Galloway, Lorin Gardner, Sidney Gass, Herbert Gedmack, John Hand, Dave Hiestand, Jerry Kintigh, Charles Larson, William Matthews.

Joseph Mellish, Carl Meixell, Frederick Metzger, Donald Miller, John Mingos, James Moyer, Aurelio Nepa, Nicholas Obzut, William Orben, Norman Paul,

5 Tons of Clothing Shipped to New York

After a month-long wait five tons of clothing collected by students in the State College area was shipped to New York last Tuesday. Benny Kofman, head of a Bellefonte trucking firm, heard of the student's difficulty in finding transportation and donated a tractor-trailer for the trip.

Students Desiring Work Can Now Be Contacted

The Student Employment Service has names of students desiring work from faculty members. These students have experience in a wide variety of occupations and may be employed by calling Extension 2049.

William Reid, Thomas Richards, Ronald Ruth, Charles Schuh, Charles Telfer, John Wolfinger, and Henry Zeybel.

Prizes Announced For Yule Displays

Richard Rigling, chairman of the AIM social committee, explained to Pollock Council Thursday night the awards to be presented for the best University Christmas window displays. Rigling reported that prizes of \$7.50 and \$2.50 will be awarded to first and second place winners in Pollock Circle. A \$10 prize will be presented for the best all-University independent display.

Lab Head Will Speak

Ralph J. Garber, director of the U.S. Regional Pasture Laboratory and member of the United Nations Food and Agriculture Organization, will speak at a joint meeting of the Future Farmers of America, Clover Clubs, and Alpha Tau Alpha, agricultural education honorary, at 7 tonight in 109 Agriculture.

CLASSIFIEDS

FOR SALE

TUXEDO AND tails and white coat. Like new. Size 39. Some accessories. Reasonably priced. Call University ext. 2248.

SWISS PRECISION made electric razors. Ideal Christmas gift for the male animal. \$7.50. Order from Freddy. Phone 3877.

1949 FORD Custom V-8 2-dr. sedan, R&H, seat covers, new tires, \$795. Will accept trade-in or will finance, 30-day guarantee. Call 4712.

1940 FORD 4-dr. sedan, rebuilt V-8 engine, R&H, new tires, \$195. Call Ron Drop 5051 ext. 790, Rm. 111.

1948 PLYMOUTH 4-door sedan, \$525, R&H, good tires. Call Joe Racik, 5051 ext. 790, Rm. 111. Will accept trade-in or will finance.

'40 CHEVROLET. Good transportation. Hurry! Hurry! Hurry! Call Kal 4106, 455 E. Beaver.

BUY MIL BALL corsages from Student Floral Agency. Agents in West Dorm and Nittany Dining Hall, 7th to 10th, 5 p.m. - 7 p.m.

WANTED

WILL PAY for use of size 38 Tux Wed., Dec. 16, 7:00-8:00 p.m. Urgently needed. Call ext. 786, Rm. 104 12:00-1:00 p.m.

HELP WANTED

MAID WANTED for house work after vacation. Fraternity maid if possible. Contact Mrs. Benner 9-2392 Pleasant Gap.

STUDENTS EARN up to \$1.50 per hour on steady part-time job. See Perry at Dux Club, 128 S. Pugh.

MAID WANTED for part time work. Fraternity maid if possible. Call Bellefonte 59067 after 5:30.

WORK WANTED

SECRETARIAL POSITION. Starting between Jan. 3 and mid-semester. Experienced in typing and shorthand. Call State College 4801.

WHEN YOUR typewriter needs attention just dial 2492 or bring machine to 653 W. College Avenue.

RIDE WANTED

RIDE TO Miami about Dec. 26; return if possible; share expenses; help drive. Bill Caryl 2546.

FROM PITTSBURGH to State College Friday afternoon Dec. 11. Call Larry Adler 4933.

PASSENGERS WANTED

PASSENGER WANTED from Washington, D.C., to State College Dec. 11 and return Dec. 13. Call town 8-6833.

RIDERS TO Smith College, Northampton, Mass., Dec. 12, to help drive and share expenses. Phone James Quisley, 7756.

LEAVING FOR Florida, Dec. 19. Help plan and spend an enjoyable Christmas vacation by joining us on a disorganized excursion. The only goal is New Year's in Miami. Points of interest will dictate our traveling rate and expenses. We bar no sex, race or religion. Phon: Tuban, 7945.

LOST

CAR KEYS and key case with license number CN480 attached. Lost between Ag building and parking lot behind Dairy building. Phone 7906.

1954 KITTANNING High School ring with inscription M.E.B. Call Dave Heiron ext. 272.

SINGLE STRAND of white pearls between Thompson and Temporary Buildings. Please call Thompson ext. 1099.

LOG LOG decitrig slide rule with black case in New College Diner or vicinity. If found call Jim, 2215. Large reward.

RONSON CIGARETTE lighter with W.R.E. engraved on it. Call Eah, ext. 1166. Reward.

PERSON HAVING grey suede jacket taken from Rathskellar on Nov. 24 call Jim Laughlin ext. 263 for their own.

SUEDE JACKET copper color—lost in The Corner Room. Please get in touch with Lee Kline. Reward. Phone 7683.

MISCELLANEOUS

WILL BILL EDGEWORTH, Jim Garrett, Ed Grove, Dave Hubert, Bill Kutz, Chip Engle, Ed Robinson, Jim Bowers, Pete Ogle, Jack Schofield, Dick Seng, Pete White, Ron Stone, Frank Schwab, and Ed Selling please call 4957 concerning the chartered bus trip to Croydon over the Christmas vacation.

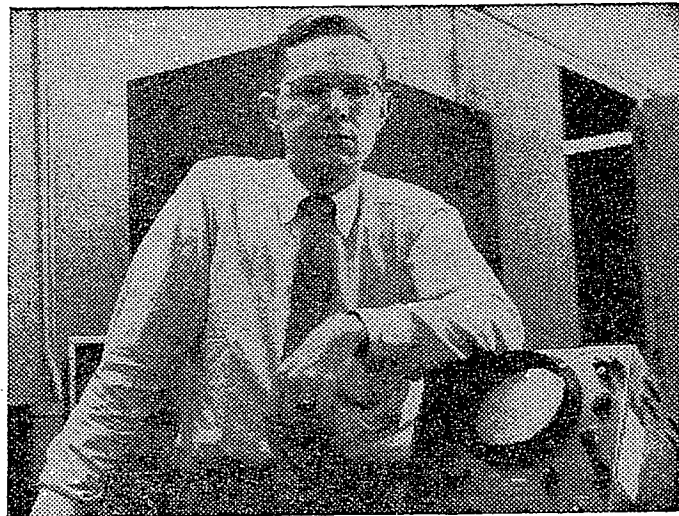
WE ASKED THESE RECENT COLLEGE GRADUATES:

"WHY DID YOU JOIN GENERAL ELECTRIC?"

"When I graduated from college I didn't have a definite idea of what field of engineering I wanted to go into. I joined General Electric because I felt that G.E.'s engineering training program offered the best opportunity to move about freely in an organization whose activities include almost every branch of engineering. In this way I found the particular specialty for which I was best suited and most interested.

"This has proved to be the case. In one year I have had assignments encompassing many fields of engineering activities, and I have been given every opportunity to meet and work with experienced engineers in numerous engineering fields.

"On the basis of the experience thus acquired, I have been able to make an intelligent choice of the particular field of engineering for which my talents, interests, and abilities are best suited."



GERALD R. PETERSON, U. of Calif., BS, electrical engineering.



DAVID J. DILLON, U. of Ill., BS, management.

"I joined General Electric because of the many opportunities I found available for building a successful career. In my chosen field, manufacturing, a development program gives each individual the opportunity to advance his own abilities and talents under experienced guidance. Work assignments, classroom instruction, and discussion periods give every opportunity for career development. Also, an opportunity for specialization is offered through working assignments in all major divisions of manufacturing.

"Through assignments in these areas a logical decision can be made on final job placement. To me this seems extremely valuable in putting the right man and the right job together, and thereby greatly enhancing the possibility for success."

These are but two of the many reasons why hundreds of college graduates come with General Electric each year. These men are part of the large group of young people who are getting ahead fast—in an industry where there is broader scope for your ability . . . where your future is not chained . . . where you work in an atmosphere of vigorous, progressive thinking.

If you are interested in building a career with General Electric see your college placement director for the next visit of the G-E representative on your campus. Meanwhile, for further information on opportunities with G.E. write to College Editor, Dept. 2-123, General Electric Co., Schenectady 5, N. Y.

You can put your confidence in—
GENERAL ELECTRIC