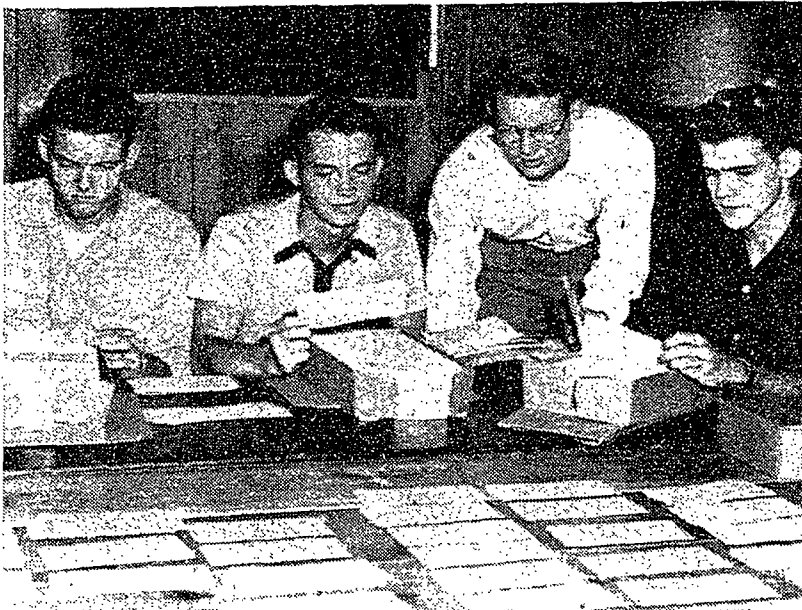


## Getting Ready . . .



ALPHA PHI OMEGA members sort through International Business Machine cards of all independent men, setting aside cards of men living in downtown areas. Alpha Phi Omega, national service fraternity, will solicit funds for Campus Chest from these men. Participation during the drive, set to run from Monday through Oct. 28, is 100 percent. Sorting cards from left to right are Gordon Smith, Richard Schuler, Samuel Webb, and Richard Gibbs, Campus Chest chairman.

## Eng Council Nominations Open Today

Nominations for freshman members of the Engineering Student Council and sophomore representatives from the new curriculum of engineering science will be held today through Friday.

A student may nominate himself or another person by registering his name in the office of his respective department head.

Election of members will take place Monday and Tuesday. A voting booth will be set up from 8 a.m. to 5 p.m. on these days at the intersection of the Mall and Pollock road. A booth will also be set up from 4 to 5 p.m. Monday in the lobby of Schwab Auditorium, during the Engineering I lecture.

At its regular meeting last night, Engineering Council expressed disapproval of the Spring Week holiday proposed by All-College Cabinet, by a vote of 16 to eight.

A committee was also named to plan a program for the Engineering-Faculty mixer, to be held at 8 p.m. Thursday, Nov. 12, in the Temporary Union Building.

## 'Old Mania' Items Due

Fraternities, sororities, and independents who wish announcements of pinnings, engagements, or marriages to be in Froth's "Old Mania" should hand such information in by 5 p.m. tomorrow at the Student Union desk in Old Main.

## WSGA Names Secretary

Carol Stevenson, seventh semester health education major, was elected secretary of Women's Student Government Association House of Representatives last week. It was reported in the Oct. 17 issue of the Daily Collegian that Janet Stevenson, fifth semester education major, was elected.

## CLASSIFIEDS

### FOR SALE

1947 CHRYSLER convertible, W.W. tires, R&H, new top. Best offer takes it. Call Bob Schoenhof at 8-9172.

STEVENSON 30-30 rifle, very good condition. Call Dave 8-9021 after 7 p.m.

1948 BUICK Roadmaster Convertible, beautiful condition. Web True, State College 2178 or 2441-ext. 2368.

SEATS AT the Powder Bowl reasonable. Everyone is going—why don't you!

CIDER FOR Sale. Five gallons or more. 70c gallon. Deliver Wed., Thurs. evenings on campus and fraternities. Call Atherton 386.

1946 PIPER J-3 Continental 75 h.p. engine. Licensed until May 1954. \$550. Contact T. F. Kenly, Hooyer Trailer Park.

### LOST

MECHANICAL PENCIL—gold and black lost near West Dorm postoffice. Call ext. 987, ask for Garry.

COLLEGE ALGEBRA book on Friday, Oct. 16. Finder please call Don, 4937. Needed for Blue Book.

LOST VICINITY Cody Manor—Gruen Veri-Thin Wristwatch. Brown leather strap. Reward. Call Gerald Franc, Pollock 5.

GREEN SWEATER with sorority pledge pin Friday night, Oct. 16 in Cathaum. Reward. Betty Barnhart, 146 Atherton.

TAKEN FROM PIKA Saturday night. One West Point blanket. Sentimental value—please return, no questions asked. Call Frank Locotos 2220.

### LOST

K&E SLIDE RULE, black case. Name inside case flap, initials (WNS) inscribed on metal band of rule. Call Bill Selvig 4967.

### FOR RENT

SELECT ROOMS with running water for graduate student or upperclassman, central location. Call 4850 or 7792. Ask for C.R.

### WANTED

GIRL WANTED to share four-room apartment with two other girls. \$20 per month and kitchen facilities. Call 2312 after 5 p.m.

RECORDER, wire or tape preferred. Call ext. 289, ask for John Boyd in Rm. 7.

### WORK WANTED

WHEN YOUR typewriter needs attention just dial 2492 or bring machine to 633 W. College Avenue.

### MISCELLANEOUS

DON'T FORGET to submit entries for Junior Prom queen before Oct. 26 at Student Union desk.

PLEASE CONTACT me if you know anyone who drives from N.Y.C. to State College on Fridays and back on Sundays. Call Mal McNiven 7232.

SOCIAL CHAIRMEN planning a square dance? Call Duane S. Beals 7851, Band and caller.

## Trustees Add 3 to Faculty

Appointments of three faculty members were approved, one professor was granted a leave of absence, and another leave of absence was extended at a recent meeting of the Board of Trustees, President Milton S. Eisenhower announced yesterday.

Dr. R. W. Grimshaw, of the University of Leeds, England, was named visiting professor of ceramics; Mary E. Fuqua, of the University of Illinois, was named associate professor of foods and nutrition; and Amanda Ebersole, of Drexel Institute of Technology, was named visiting professor of home economics education.

Dr. Edward C. Henry, professor and chief of the Division of Ceramics, was granted a leave of absence from Oct. 1 to Sept. 30, 1954. A leave of absence for Dr. Cyrus E. French, professor of animal nutrition, was extended from Jan. 1 to June 30, 1954.

## Chapel Gift--

(Continued from page one) will be chosen on their high school record and evidence of need.

According to the approved plan, individual awards may not exceed approximately \$225, or the amount of in-state fees for one year. The scholarships will be issued on an annual basis, and priority will be given to those re-applying, provided a designated average has been maintained.

The foundation, in formally turning over its funds to the College for disbursement, reported contributions of \$1457 for the Council of Research, \$12,834 for school equipment, \$2120 for loan funds, \$2756 for the Penn State Christian Association, and \$12,435 for a variety of miscellaneous projects.

## Althouse to Speak

Dr. Paul M. Althouse, professor of agriculture and biological chemistry, will discuss "Chemistry in Agriculture" at the General Agriculture Club meeting 7 tonight in 210 Agriculture.

## Reede to Speak Tonight

Dr. Arthur H. Reede, professor of economics, will discuss "Proposed Changes to the Taft-Hartley Law" at the Industrial Relations Research Association meeting at 7:30 tonight in 208 Willard.

## Gemmell Will Speak

Dr. James Gemmell, associate professor of economics and business education, will discuss "Trends in Business Education" tomorrow in Wilmington at the annual meeting of the business teachers of Delaware.

## Freshman Basketball

John Egli, freshman basketball coach, has announced a call for frosh court candidates. Interested students may report at 7:30 p.m. tomorrow in the upper bleachers at Rec Hall.

## Ed LaVie Pictures

Education seniors may have pictures taken for LaVie between 9 a.m. and 4 p.m. today through Tuesday at the Penn State Photo Shop.

## Home Ec Coffee Hour

A coffee hour for alumni of the School of Home Economics will be held from 10 a.m. to noon Saturday in the Home Ec Living Center.

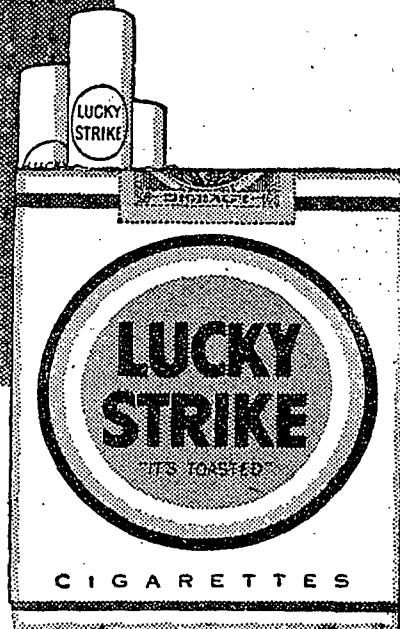
# LATEST BULLETIN

## Brand-new national survey

## shows college students prefer Luckies

Last year a survey was made in leading colleges throughout the country which showed that smokers in those colleges preferred Luckies to any other cigarette. This year another nation-wide survey was made—a representative survey of *all* students in regular colleges coast to coast. Based on thousands of actual student interviews—this survey shows that, as last year, Luckies lead again—lead over all other brands, regular or king-size—and by a wide margin! The reason: Luckies taste better.

**P. S.** Once again we're buying student jingles! \$25.00 goes to every student whose Lucky Strike jingle is accepted for our advertising. So hurry! Send yours in right away to: Happy-Go-Lucky, P. O. Box 67, New York 46, N. Y.



## LUCKIES TASTE BETTER

## So Be Happy-Go LUCKY!

PRODUCT OF The American Tobacco Company AMERICA'S LEADING MANUFACTURER OF CIGARETTES