

# Campus Organizations Represent Religious Groups

Religious groups and denominations at the College are represented by various student organizations on campus. The groups plan a wide field of activities from social programs to worship services and are open to freshmen.

**Inter-Church Student Fellowship** is made up of two appointed representatives from each denominational student religious organization. Representatives from each church attend a fellowship meeting the first Sunday of every month, and take back for approval plans outlined at the joint meeting.

Through these delegates, organizations sponsor union worship services and occasional radio addresses. Groups are active in Religion-In-Life Week activities. As part of their recreation program, an Inter-denominational Basketball League is organized during basketball season.

**Young Friends** provides an opportunity for Quaker students and other interested persons to meet and discuss principles of their religion and possible solutions to community and world problems. Informal discussion groups are held at 9:30 a.m. Sunday; morning worship is at 10:45 a.m.; a regular meeting is held at 7 p.m. Sunday in the Meeting House, 318 S. Atherton street. Suppers, square dances, open houses, or hikes are held on Friday nights.

**Orthodox Church Student Group** endeavors to fulfill the religious needs of nationalities belonging to the Orthodox Rite Church. Nationalities include members of the Greek, Russian, Ukrainian, Syrian, Armenian, Romanian, Albanian, Bulgarian and Serbian Orthodox Church.

Services at **St. Andrew's Episcopal Church**, Foster avenue and Frazier street, include talks by visiting priests from cities near the College. Notices concerning meetings will appear in the Daily Collegian and Centre Daily Times.

**Evangelical United Brethren Fellowship** will hold a mixer at 7:30 p.m. Sept. 26 in the Student Fellowship room of St. John's Evangelical United Brethren Church, Burrows road and Beaver avenue. Games and refreshments have been planned, and new members will be taken on a tour of the church and introduced to officers.

The fellowship meets at 6:15 p.m. Sunday, with a supper held once a month before meetings. Monthly socials are planned for members and interested students.

**Unitarian Student Fellowship** will hold a meeting for new freshmen at 6:20 p.m. Sept. 20 at the Christian Association.

Meetings are held with other campus religious groups. Members meet at 6:20 p.m. at the Student Union desk in Old Main and proceed to their meeting place. Students interested in membership may call Dr. Gerald Haac, extension 2422 or town 2861, or John Tomlinson, at the University Club, 2251. A newsletter is sent to members.

**Newman Club**, named for the late English literary figure, Cardinal Newman, looks after spiritual interests of Roman Catholic students. The group holds executive meetings twice a month and a monthly business meeting. A get-acquainted mixer is tentatively planned for 8 p.m. Sept. 20 in Atherton lounge.

Meetings will be held on Tuesday, Wednesday or Thursday nights in available classrooms for

discussion of religious and educational problems. At least one social gathering is held each month. Plans for this semester include a communion breakfast once a month following the 9 or 10 a.m. Sunday services. The Nittany Newmanite newsletter is published monthly. A weekly broadcast will be sponsored by the group at 7:45 p.m. Monday.

**Lutheran Student Association** emphasizes worship, Bible study, evangelism, service and recreation. Open house will be held every night during Orientation Week in the Lutheran Student Center, 412 W. College avenue. An IScream 4-A Party will be held at 7:30 p.m. Friday. The center is open for recreation from 9 a.m. to 11 p.m. weekdays and until midnight on weekends. A social is held at 7:30 p.m. every Friday night.

Bible study classes meet at 7 p.m. Tuesday and 9:30 a.m. Sunday. Church services are 8:30 and 10:45 a.m. Sunday, and vesper services at 6:30 p.m. The Student Council meets the second and fourth nights of every month. Penn State Lutheran is the monthly publication.

**Roger Williams Fellowship** is the University Baptist Student organization. A Sunday supper at 5 p.m. Sept. 20 at the Baptist Student Center, Nittany avenue and Burrows road, will be followed by worship and a fellowship program. A social gathering will be held at 7:30 p.m. Sept. 26. A fun night is held at 7 p.m. every Friday at the center.

**The Baby Sitters' League** started last year is still functioning. Deputations, or teams to conduct worship services, are occasionally sent to churches within a 100-mile radius of the College. Link is the fellowship publication, and the group sponsors unscheduled broadcasts over WMAJ.

**United Student Fellowship** provides for the spiritual needs of the Evangelical, Reformed, and Congregational Christian Church students. A tentative schedule includes a meeting at 6:30 p.m. Sept. 20 in the Faith Evangelical and Reformed Church, College avenue and Miles street. Dr. Werie, Chapel speaker, will be guest speaker. A picnic will be held at 2 p.m. Sept. 26 at Whipple Dam. A meeting at 6:30 p.m. Sept. 27 will introduce the new student pastor.

Meetings are held at 6:30 p.m. Sunday, with a 5:30 p.m. supper program every other week. Family relations, world religious problems, and seasonal religious topics are discussed at meetings. Social events are held at 7:30 p.m. every other Friday. Tatler, the fellowship newsletter, is published twice a semester.

**Westminster Foundation** is a

continuation of the Presbyterian Westminster Fellowship youth program on college level. Open house will be held 7 p.m. Monday through Wednesday at the Presbyterian Student Center, 132 W. Beaver avenue. "From Whence Cometh the Dink" will be the theme of the meeting for freshmen at 6:30 p.m. Sept. 20. A social, the Presbyterian "Welcome Wagon," will be held at 7:30 p.m. Sept. 26.

Morning worship service is at 9:30 a.m. Sunday and young people's meeting at 6:30 p.m. Devotions and Bible study meetings will be held at 7 p.m. Thursday and choir practice at 8:15 p.m. The Student Council meets Tuesday, and all social activities are scheduled for Friday night. They include square dances, skating parties, and a weekend cabin party at the PSCA cabin. A dramatic group is planned.

**The Christian Outreach Commission** sends deputations to address student church groups at other colleges and the county home. A spring yearbook and Christmas and Easter booklets are published.

**Wesley Foundation** provides for the religious needs of Methodist students. During Orientation Week open house will be held at 7:30 p.m. every night in the Foundation House. A party for new students will be held at 7:30 p.m. Friday in the gym. Games and refreshments are planned.

The group holds weekly breakfasts at 7 a.m. Thursday and an open house Friday night. Supper is served at 5:15 p.m. Sunday. A meeting is held at 6:30 p.m., and fellowship meeting at 9:30 p.m. An annual banquet, picnics and cabin parties at the PSCA cabin are among the social events. Choir and drama groups are other activities. The weekly Nittany Wesleyan and the Wesleyan Way, a yearbook, are the publications.

**Kappa Phi, Methodist Women's** organization, trains members for future church leadership. It meets at 7 p.m. the first and third Wednesday of every month in the Wesley Foundation. Candidates for membership are tapped.

Activities include social and service projects held in cooperation with the women's societies of the Methodist churches. The Kappa Phi Carnival and annual senior recognition banquet are held in the spring.

**Hillel Foundation**, national organization devoted to cultural, religious, and counseling service for Jewish students, will hold open house from 9 a.m. to 5 p.m. Orientation Week at the foundation house, 240 S. Miles street. A mixer will be held at 7:30 p.m. Thursday. Yom Kippur services will

begin at 8 p.m. Friday and continue from 9 a.m. to 7 p.m. Saturday. Following the services there will be refreshments and dancing. A meeting for freshmen will be held at 2 p.m. Sept. 20; a film will follow at 3 p.m.

The governing board of Hillel meets once every two weeks. Activities are continuous throughout the school year. They include observance of holy days, religious or cultural discussion groups, committee activities and social events.

**Hillel Hilites**, weekly newspaper, is sent to members. Kibitzer, social publication, appears once a month. A weekly radio program, the Hillel Hour, will be broadcast over WMAJ at 7:30 p.m. Thursday.

**Canterbury Club** works toward a closer spiritual union of Episcopalian students. A reception for students will be held at 7:45 p.m. Sept. 26 at St. Andrew's parish house, Foster avenue and Frazier street.

The group meets at 6:30 p.m. every Sunday in the parish house. The first Sunday of each month a supper precedes the meeting at 5:30 p.m. A speaker is usually invited. Open house is held at 7:30 p.m. every Thursday in the rectory. Cabin parties are held at the PSCA cabin. Each semester the group attends a conference held with a church organization on another campus. The Parish Messenger is mailed out monthly to students.

Holy communion services are held at 7 a.m. Wednesday and 7:45 a.m. Sunday, with breakfast following the services. Church services are held at 10:45 a.m. Sunday.

The group operates a concession stand near Beaver Field during football season.

**Christian Science Organization** meetings consist of Bible lessons and faith testimonials by group members. Social activities, handled by the Christian Science Monitor Youth Forum, include parties at the PSCA cabin, skating, skiing and tobogganing.

**Inter-Varsity Christian Fellow-**

## Seek Statistics? Pattee Library Houses Them

Want to know what gnus do, or the population of Tibet? Need a book on the habits of Chinese hummingbirds? If you do, then the Pattee Library located at the end of the Mall is the best place to go.

The library has two floors of reading and reference rooms and four stories of stacks filled with books. A new addition provides room for three more floors of stacks and work tables.

The reserve book room on the first floor is the place where students may find books professors put on reserve for courses. Also on the first floor is the open shelf and newspaper room.

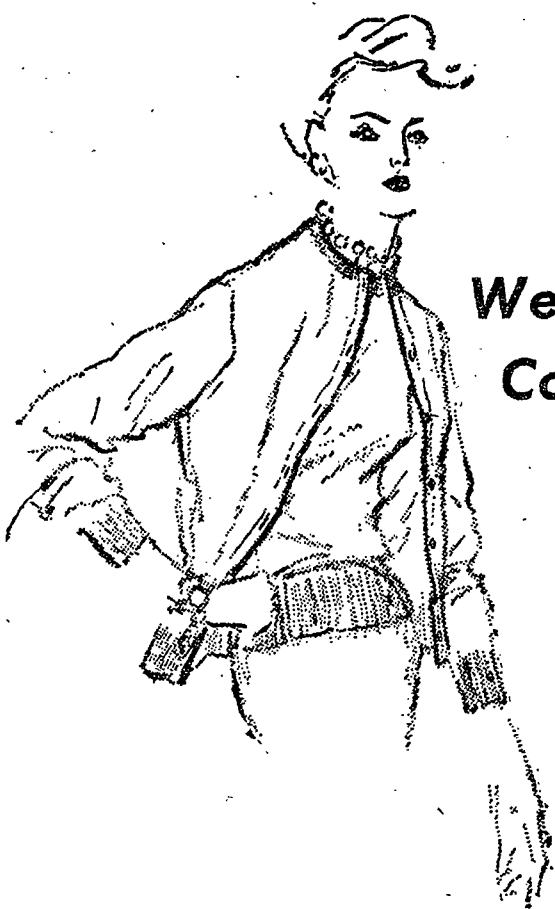
Second floor houses the card catalogue where cross-reference files indicate the title, subjects, or author of any book you may be looking for. The reference room keeps on file periodicals and reports for student use.

Two microfilm projectors are located in the reference room. The Penn State room offers historical facts and fiction about the College.

The library sponsors exhibits in the first and second floor lobbies. Last year stamp collections, dolls, book bindings and souvenirs were displayed.

ship, non-denominational religious group, meets 7:30 p.m. Friday in 405 Old Main.

Discussions, social activity, and refreshments follow the meetings. A speaker is invited each week to talk with the group. The fellowship conducts services at Rockview Penitentiary on the second Sunday of every month.



Welcome Coeds!

Be sure to meet your friends at Schlow's. The home of fashionable campus-wear.

Featuring . . .  
Judy Bond Blouses  
Hadley Cashmere Sweaters  
Campus Jackets

Schlow's  
110 E. COLLEGE AVE.

Dear Miss . . . . .

Welcome to Penn State. We know you'll have a wonderful time here . . . from the time you put on your freshman dink until the time you take off the graduate's cap and gown.

We hope you'll drop in at Simon's this week and see our wonderful selection of shoes. Here is our list of brands, we know your favorite is among them:

- ★ FLORSHEIM
- ★ CORONET
- ★ TOWN & COUNTRY
- ★ LARKWOOD
- ★ MADEMOISELLE
- ★ AVONETTE
- ★ SANDLER
- ★ DEB

**Simon's**

109 S. ALLEN ST.

**CANDY**

**A**

**N**

**E**

**DELICIOUS FUDGE**

**ROASTED NUTS**

**ENGLISH TOFFEE**

"Between the Movies"