

Women's Rules Set by WSGA

Women's Student Government Association formulates and enforces rules and regulations pertaining to women at the College. WSGA, formed in 1915 and reorganized in 1916, is affiliated with the Intercollegiate Association of Women Students. It is one of two college women's government organizations in Pennsylvania.

The dormitory living unit is the basic group upon which women's government is organized. A dormitory hostess is in charge of each unit and acts as adviser at regular house meetings.

Senate Highest Body

Each unit elects president, vice president, and secretary-treasurer. The president is the unit's representative in the WSGA House of Representatives.

Senate is the highest governing body of WSGA. It is composed of four officers and seven senators elected by women of the College, and representatives of Leonides, Panhellenic Council and Women's Recreation Association.

A nominating committee selects eligible candidates from women who apply at the Dean of Women's office. Selection is based upon scholarship, extra-curricular activities and leadership. Applicants must not have a major judicial record. All women are eligible to vote in the primary and final elections.

Strawn Is Vice President

WSGA President Nancy D. White calls and presides over meetings of the association and Senate. She can take any matter before Senate or the House of Representatives. The president is an ex-officio member of WSGA committees and is WSGA representative on All-College Cabinet.

Vice President Maude Strawn presides over the House of Representatives and assumes duties of the president in her absence. Barbara Werts, secretary, handles WSGA correspondence, posts notices of meetings, and takes minutes.

Treasurer Frances Riley handles WSGA finances. Marilyn Buzby, senior senator, is chairman of the coed coordinating committee and junior-senior faculty reception.

Freshman Council Chairman
Patricia Ellis and Arlene Borgeson are junior senators. Miss Ellis organizes WSGA convocation and is WSGA historian. Miss Borgeson is publicity and advertising chairman.

Barbara Stock, sophomore senator, is chairman of freshman council. She and the freshman senator organize the big-little sister tea in the spring. Jane Reber, town senator, is in charge of the WSGA Orientation Week counseling program.

Other members of the Senate are Ruth Israel, representing Leonides, Louise Mereman, vice president of Panhellenic Council, and Elizabeth George, representing WRA.

House of Representatives

Senate meets at 6:30 p.m. Wednesday in the WSGA room in White Hall. Meetings are open to women students.

The WSGA House of Representatives, composed of living unit presidents, discusses questions brought up at unit meetings and makes recommendations for presidents to take back to their units.

Town women elect a senator and a member of the House of Representatives. A special study room in Woman's Building is provided for two women.

Plan May Day Celebration

Freshman council is the coordinator between freshman women and WSGA Senate. Its members include presidents, vice presidents and secretary-treasurers of freshman living units and one town freshman. Two freshman senators, elected in the fall are ex-officio members of freshman council. The council discusses problems pertaining to freshmen and, if necessary, refers them to Senate.

WSGA activities include planning the annual May Day celebration, Mothers Day weekend, organizing living units, filing activities cards in the Dean of Women's office, aiding with the freshman Orientation Week program and sponsoring clothing and Christmas drives, educational lectures, an informal dance, and junior-senior faculty reception.

Free Cattle Booklet

A free 95-page pocket-sized book on cattle husbandry may be obtained by writing to Room 1005, Lederle Laboratories Division, American Cyanamid Co., 30 Rockefeller Plaza, New York 20, N. Y.

Independent Coeds Aided By Leonides

Leonides, independent women's association, was reorganized from the Independent Women's Organization in the 1948-49 school year. Independent women attending the College automatically become members of Leonides.

Associated with Leonides is Philotes, women's social organization, which chooses its members from Leonides.

A council composed of elected representatives from the 33 independent women's living units governs Leonides. Council meetings are open but only official representatives may vote.

The primary purposes of Leonides are to foster a closer relationship between independent women, to ensure equal representation in student government, and to provide better social and athletic opportunities for members.

Philotes was organized in 1937 to unify non-sorority coeds, to broaden their role in academic and social life, to stimulate their interest in scholarship and activities, to help them acquire self-confidence, and to promote friendly cooperation with other campus organizations.

A coed must receive a bid to become a member of Philotes and an All-College average of 1.0 is required before a coed may be pledged.

Although there is no limit on membership, active members usually number 45 or 50.

Officers of Leonides elected last spring are Hilda Hogeland, president; Ruth Israel, vice president; Susanne Crumley, treasurer; Jeanne Maxwell, corresponding secretary; and Shirley Pritchard, recording secretary.

Collegian Seeks Society Information

Information concerning marriages and engagements is requested for use on the society page of the Daily Collegian.

Students engaged or married, or who know friends who are, may bring the data to the Collegian office, located in the basement of Carnegie Hall, or phone it into the society editor.

Facts needed to write the story are full names of both parents, home towns of both persons, semester standing and curriculums, and a list of extra-curricular activities and awards of both.

PSCA Offers Varied Agenda For Students

The Penn State Christian Association offers a varied program of social, educational, and religious activities for students and faculty of all faiths.

Among activities planned by the inter-denominational organization are weekend parties at the CA cabin, Ralph Watts Lodge, seminars, hikes, and trips to Washington, D.C. and the United Nations in New York.

Weekly programs at the 7 p.m. meetings on Wednesdays in 304 Old Main feature speakers on topics varying from sports to international affairs. Movies and regional conferences are a part of the CA program.

A Circle and Square Club for students who enjoy folk dancing is held every Tuesday night. Besides the activities open to all students, PSCA sponsors an International Graduate Club.

Serving the College for more than 75 years, the Christian Association is supported by students, faculty, and contributions made through Campus Chest.

Students may drop in at the PSCA headquarters, 304 Old Main, at any time for relaxation, discussion, and fellowship.

PSCA is governed by a student cabinet composed of John Garber, president; LaVerne Applegate, vice president; Shirley Pritchard, secretary; and Douglas Finemore, treasurer.

The Rev. Luther H. Harshbarger, College chaplain, is general secretary of the association. He is assisted by Mary Jane Wyland and Margery Yougel.

Engineers Visit College

Two Japanese engineers visited the Automotive Research Laboratory at the College to inspect facilities and exchange information on combustion, gasoline injection, and engine instrumentation research problems.

TOWN HOUSE

DINNERS 5 to 8 DAILY (EXCEPT SUN.)

Rear of 129 S. Allen

The Coziest Place in Town!

It has the modern colonial atmosphere of a hunt club with the gay, informal air of a private party.

It Specializes in the Best of
STEAKS, SPAGHETTI and SHRIMP

.....

Supper Hours are 5 to 8 p.m.

.....

Entrance at Rear of 129 S. Allen Street

Sororities' Activities Governed by Panhel

Panhellenic Council was organized to integrate the sorority system and to promote better relations among the 20 national sororities and two colonies on campus.

Two representatives from each sorority and colony serve on the council, which is affiliated with National Panhellenic Council. Panhel formulates the sorority rushing code. Its judicial committee prescribes penalties for violations.

Ellen Wandel, Beta Sigma Omicron, is president of the council. Louise Mereman, Delta Zeta, is vice president. Offices are rotated among sororities according to the order in which the groups joined Panhel. Miss Mereman will serve as president next year.

Other officers are Joan Levinson, Alpha Epsilon Phi, corresponding secretary; Roseann Monack, Gamma Phi Beta, secretary; Janice Carstenson, Delta Delta Delta, treasurer; and Janet Melzer, Delta Delta Delta, rush chairman.

Formal sorority rushing for upperclasswomen will begin Saturday with registration and a talk for prospective rushees. Open houses will be held Saturday afternoon and Sunday. Coke dates are scheduled Sept. 22 to 25. At homes will be held Sept. 27 and parties Sept. 28 and 29. Coffee hours will be held Sept. 30. Ribboning will take place Oct. 1.

Panhellenic and Interfraternity

Councils co-sponsor the annual IFC-Panel Ball, IFC-Panel Sing, and other Greek Week projects.

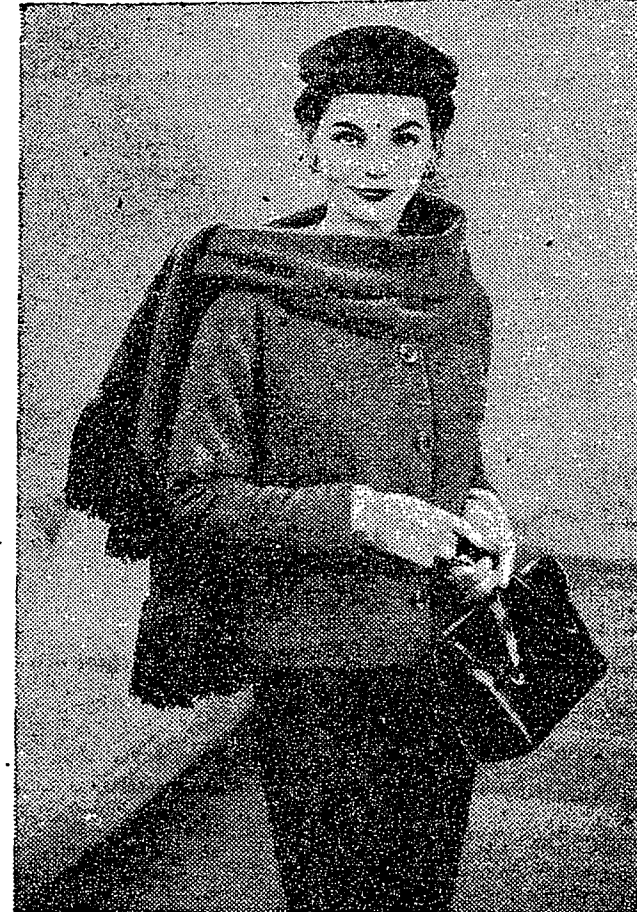
Panel awards three \$50 scholarships to deserving women on campus. It presents a scholarship cup at the end of each semester to the sorority having the highest scholastic average. The council publishes a booklet each year for new students on campus.

The Panhel president represents sorority women on All-College Cabinet.

Nittany Co-op Features Group Working, Eating

College Co-op, located downtown, is a coed eating cooperative in which men and women students share the cost of food and the burdens of running a house. Coeds sleep in the house while men students room out.

The club, established in 1939, employs a paid cook who supervises work done by students. At present the organization has about 60 members.



Simplicity Printed Pattern 4387

**wonderful wool
to keep you warm**

*In exciting textures and colors
by the yard from our fabrics center*

Including...

All Wool

Wool and Nylon

Wool and Orlon

54 to 60 inches wide

\$2.98 -- \$4.50

Danks & Co

148 SOUTH ALLEN