

Banquet Honors 73 Top Pledges

John R. Hunter Jr., member of the class of '22, last night told 73 outstanding sorority and fraternity pledges their Greek affiliations are the most important part of their environment, and consequently, of their college life.

He spoke at the Interfraternity-Panhellenic Council Outstanding Pledge Banquet at the Allencrest Tea Room.

SU Division To Be Set Next Year

Plans for student use of space in the Student Union Building will be determined sometime during the next school year, Wilmer E. Kenworthy, director of student affairs, has said.

The new SU will have a floor of office space for student use. Organizations will, according to their need, be granted an office or a desk in a large general workroom designed for groups not needing an individual office, Kenworthy said.

Since the SU will not be ready for use next year, distribution of office space will not be made this year. Completion of the SU is set for September 1954.

Organizations on Board

Next year's SU board will probably work with the College administration in assigning office space. There will be eight or ten private offices.

George L. Donovan is graduate manager of the SU board. Organizations represented on the board are All-College Cabinet, the Association of Independent Men, the Interfraternity Council, Women's Student Government Association, Panhellenic Council, Men's Athletic Association, Women's Recreation Association, the Interclass Finance committee, the Penn State Christian Association, and the Board of Publications.

Furnishings Not Decided

In the general office room, desks will be provided for campus organizations. Groups using this room will also have the use of a file room in which to keep their records and other materials. Decision as to which student groups are to be assigned office space will be based on need, Kenworthy said.

Plans have not yet been made for the office furniture and other furnishings of the new building.

The SU will provide from four to eight meeting rooms. Four large rooms can be subdivided with folding partitions to produce eight smaller rooms. These partitions can be closed or opened to provide various sized meeting rooms.

No decision has been made on what use will be made of the Temporary Union Building after the SU is placed in service, Kenworthy said.

U.S. Consultant To Talk Sunday

Col. Francis P. Miller, United States Department of State consultant, will speak on "Christian Faith and Social Policy" at Chapel services in Schwab Auditorium Sunday morning.

Colonel Miller will also deliver the second in a series of faculty lectures sponsored by the faculty committee of the Penn State Christian Association at 8 p.m. Sunday in 10 Sparks.

Colonel Miller has served as a secretary of the World Student Christian Federation and as a member of the Commission of 25 on the World Council of Churches.

Educated at Washington and Lee University, Colonel Miller was a Rhodes Scholar and attended Oxford University. He is author of two books, "The Giant of the Western World" and "The Blessings of Liberty."

English Prof to Speak

Dr. H. K. Henish of the University of Reading, England, will deliver an open lecture on semi-conductors and transistors at 4:10 p.m. Monday. The lecture, scheduled for 117 Osmond, will be open to the public.

Poster Winners

A permanent fund for the Page twin infants, who have malformed feet, is under the consideration of IFC and Panhellenic Council, Richard Gibbs, co-chairman of Greek Week, announced. Proceeds of a Greek-community show, held Tuesday night, will pay specialists' fees. Contributions to the Page Twin Fund can be made at the Student Union desk in Old Main, Gibbs announced.

Beta Sigma Omicron sorority and Phi Epsilon Pi fraternity, winners of the Greek Week poster contest, will receive cups, Gibbs also announced. The posters portrayed the Greek Week theme, "The Greeks and the Community."

Arthur Rosfeld, outgoing IFC president, urged the pledges at the banquet to promote unity among Greek organizations on campus. "I am a fraternity man," said Rosfeld, "but I am a Penn Stater first."

Fraternal Life

Hunter, who played varsity football, basketball, and baseball while at the College, and is past national president of Alpha Chi Rho, told the pledges, "The friendships you make here will be lasting ones."

"Your fraternity and sorority life will appear much greater to you in later years," Hunter declared. He pointed out how fraternity affiliations had been beneficial in the past.

Moral and religious influences are on the upswing on campuses throughout the nation, Hunter observed.

The banquet, first of its kind held at the College, was attended by the outstanding pledge from each fraternity and sorority.

Glee Club to Present Comedy Act, Solos

A vocal quartet, a 19-man comedy group, and tenor and piano soloists will be featured at the annual spring concert presented by the Penn State Glee Club at 3 p.m. Sunday in Schwab Auditorium.

The program will include ever-popular Broadway show tunes, German and American folk songs, and other favorite and familiar compositions. Admission is free.

Under the direction of Frank Gullo, associate professor of music, the 50-man Glee Club will sing 12 numbers, six at the beginning and six at the conclusion of the program. The Glee Club version of "Hail to Pennsylvania State" (Ray Fortunato) will open the program.

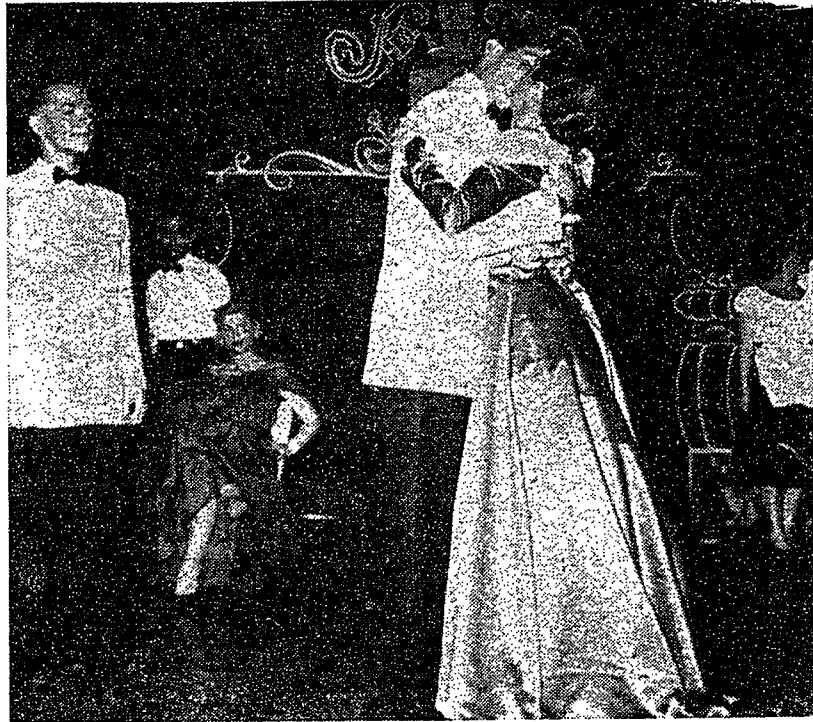
Other selections by the entire group will include "Laudamus" (Daniel Protheroe), "I Passed by Your Window" (May Brake) with a solo part by Luther Sunderland, "The Spacious Firmament on High" (Laurence Powell), "The Gandy Dancer's Ball" (Weston-Howard) arranged by Harry Simeone, and "Battle Hymn of the Republic" (Howe-Steffe) arranged by Roy Ringwald.

Also "Rise 'n Shine" (Vincent Youmans); "Carry Me Home to the Lone Prairie" (David Guion); "I Won't Kiss Katy," a Yugoslav folksong; "Wanderin'" arranged by Stuart Churchill; "Kathryn's Wedding Day," a German tune arranged by Luvaas; and "Give Me Your Tired, Your Poor" (Irving Berlin).

Eudell Korman, pianist, will accompany the Glee Club and provide the background for all concert numbers. In addition he will perform the solo "Toccata" (Aram Khachaturian).

Five selections will be sung by the Hy-Los, a 19-man comedy vocal group from the Glee Club. The specialty group will present "Roving," a sea chanty; "The Way You Look Tonight" (Jerome Kern); "Sweet Georgia Brown" arranged by Walter Scotson; "Winter Song" (Frederick Bulard) with Barry W. Smith direct-

... Happily Ever After



EXPRESSING THEIR LOVE are Joe Goldstein and Nancy Thomas in "Roberta." Thespian show which opened last night at Schwab Auditorium. Looking on are Al Beliasov, Suzanne Kiel, and members of the chorus. The musical comedy by Jerome Kern and Otto Harbach will run tonight, tomorrow afternoon, and tomorrow night.

'Roberta' Scores Hit, Lacks Total Unity

By EDMUND REISS

The fashion show with a plot, otherwise called "Roberta," opened last night in Schwab with a rather large bang. However, excellent acting and some good singing and dancing weren't enough to make a completely unified play out of this Kern and Harbach musical comedy.

The play opens at Alpha Beta Pi fraternity at Haverhill College

Camera Available

A Contoura camera for copying is available at the Pattee Library and may be borrowed for short term use by any College staff member. Applications must be made to Margaret K. Spangler, assistant librarian.

where Johnny Kent, inadequately played by Joe Goldstein, is a football hero. Goldstein was good when he became loud or excited, but aside from these few times, he fidgeted, made half-hearted gestures and had a puzzled cow-like look that never seemed to change.

After his fiancée, Sophie, leaves him, he goes to Paris with a band headed by his best friend, Huck, played by Al Beliasov who does a very good job with this comic part. Johnny inherits a dress-making firm from his aunt, Madame Roberta, and goes into business with Stephanie, a princess and Roberta's dress designer. After much trouble with his old fiancée and a luscious, seductive dancer, Madame Scharwenka, Johnny finally asks Stephanie to marry him.

Nancy Thomas as Stephanie played her part like a professional. She kept the audience on her side the whole time and succeeded in getting more than seemed possible: out of her straight part.

Suzanne Kiel, playing the part of Madame Scharwenka, carried the whole show. Each time she came on stage, an added lift appeared. The actors seemed to act better, the singers sang better, and the dancers danced better. Everything pepped up, and there was a sparkle not present when she was off-stage.

Other fine pieces of acting were turned in by Ann Wylie as Sophie, Johnny's fiancée; Pat Marsteller as her mother, the small town snob; Richard Brugger, the stuffy but human Lord Henry; Doris Cook as Madame Roberta; and

(Continued on page eight)

Harvard U. Chem Prof Will Speak

Dr. James J. Lingane, professor of chemistry at Harvard University, will present the 27th annual Priestley lecture series on "Innovations in Electrochemical Analysis" in 119 Osmond beginning Monday.

Dr. Lingane will speak at 7:30 p.m. Monday, Tuesday, Wednesday and next Friday, and at 5:15 p.m. Thursday.

Dr. Lingane received his bachelor of chemistry degree in 1935 and his Ph.D. in 1938 from the University of Minnesota. He received an honorary M.A. degree from Harvard University in 1946.

He has served on the faculties of the Universities of Minnesota, California, and Harvard. He also was employed as a civilian in the Office of Scientific Research and Development.

Dr. Lingane is a member of the American Chemical Society and the American Academy of Science. He is interested in the field of analytical chemistry with emphasis in electrochemistry, polarographic analysis, electroanalysis, instrumental methods of analysis, and physico-chemical methods of chemical analysis.

He is the co-author of a two-volume standard reference on polarography.

The lecture series, founded by Dr. Wheeler P. Davey, professor emeritus of physics and chemistry, is presented by Phi Lambda Upsilon, national honorary chemical society, in collaboration with departments in the Schools of Agriculture, Chemistry and Mineral Industries.

Practice Raid To Be Tuesday

A civil defense air raid will be observed in all parts of the state Tuesday. The first signal of approaching planes, the red alert, will be sounded at 2:35 p.m. There will be a three-minute series of short blasts by the fire whistle at the College Power Plant.

Three minutes later, 2:38 p.m., the attack period will begin. The all clear, a long blast from the fire whistle, will be sounded at 2:41 p.m.

When the red alert sounds, personnel in campus buildings should remain there, explained Charles A. Lamm, in charge of civil defense activities. Classes will not be interrupted.

Pedestrians on campus should seek cover in a nearby building and remain there until the all-clear is sounded. Those in vehicles should pull to the curb and park.

Phys Ed Council

The Physical Education Student Council will meet at 6:30 tonight in 105 White Hall.

Today WARNER theatres
Cathay
 ANNE BAXTER
 RICHARD CONTE
"THE BLUE GARDENIA"

State
 JANE POWELL
 FARLEY GRANGER
"SMALLTOWN GIRL"

Nitty
 Gregory Peck
 as
"THE GUNFIGHTER"

WE HAVE IT!
POSTERBOARD
 22 by 28 15c sheet
POSTERPAINT
 all colors 30c bottle
 \$5 in sales, you get \$1 in merchandise FREE!
BX in the TUB