

Colbert Fills In Council Position

Alice Colbert, Junior phys ed council representative, was unanimously chosen by council last night to fill in the position of vice-president. Carole Kowallis was named by council to take the place of Colbert as junior class representative.

Assignments have been made for Discobolus, School of Physical Education publication, according to Robert Kriedler, acting president. He said the paper will be distributed March 31.

The open-house committee reported that plans are underway for open-house publicity. Letters will be sent to prospective students, and one issue of Discobolus will be devoted entirely to open house.

The committee also reported that many athletic events scheduled for open-house week-end will supplement the planned program. There will be a football clinic in Rec Hall, a lacrosse game, golf match, and tennis match. The intersquad Blue-White football game will be held in the afternoon of May 2.

The next council meeting will be Monday evening at 9 in 105 White Hall.

Forms for Grad Exams Available in Buckhout

Bulletins of information and application blanks for the next Graduate Record Examinations are available in 106 and 207 Buckhout, according to Dr. Leon R. Kneebone, supervisor.

The tests will be held on campus April 17-18. Applications must arrive at Educational Testing Service, P.O. Box 592, Princeton, N.J., no later than April 3.

Shaler to Speak

Dr. Amos J. Shaler, professor and chief of the division of metallurgy, will address the Penn State chapter of the American Society of Metals at 8 tonight in 219 Electrical Engineering.

Decorating Committee

The decorating committee for the sophomore class dance "Shantytown Shuffle" will meet at 6:30 tonight in 204 Old Main.

UJA Reports Due At Hillel Today

First reports of solicitors for the United Jewish Appeal drive are due today at the Hillel Foundation, 224 S. Miles street.

Solicitations in town and on campus will end Sunday. Any person, who has not been contacted by a solicitor, may leave his contribution at the Hillel Foundation.

Proceeds from the booths and voting for the king and queen at the annual Purim carnival to be held Saturday will go towards the \$4200 local goal. Joseph Banks and Nedra Levine are co-chairmen for the Hillel drive this year.

Aaron Druckman, assistant professor of philosophy, discussed the drive last night in Simmons Hall. Other speakers explained the drive at Jewish fraternity houses.

Penn State Club To Hold Initiation

Independent men interested in joining the Penn State Club will be initiated into the club at 7 tonight in 411 Old Main.

Those interested will undergo a short pledge period before being accepted into the organization.

Ag Committee to Meet

The Ag Hill Achievement Day committee will meet at 7:30 tonight in 103 Agriculture, William Griffith, chairman, has announced.

Malenkov Speaks—

(Continued from page one)

The great square was filled with troops in long grey overcoats, bands and thousands of civilians until no one else could be crowded in. At least 10,000 personages were in the stands. At the tribune on the tomb were Malenkov and his associates of party and government. In the tier above them the representatives of foreign governments were arrayed.

An exceptional place was given Chou En-lai, Premier and foreign minister of Communist China, for he marched in the procession at the left of Malenkov and was the third to ascend to the tribune, behind Malenkov and Beria.

No prayers or religious services were pronounced, though prayers were said in Moscow churches during Stalin's illness and the Russian Orthodox hierarchy, led by Patriarch Alexei, visited the

Hall of Columns where he lay in state from the day after his death on Thursday.

In loud and vibrant tones, Malenkov called Stalin an "ensign of peace" and said he had directed the "supreme force of his genius" to that end.

Stalin, he said, had created a "mighty camp of peace, democracy and socialism," and he said the Soviet people must now consolidate in every way the "eternal" bonds with Communist China, and the peoples of Czechoslovakia, Poland, Bulgaria, Romania, Hungary, Albania, East Germany and Mongolia.

"We are the true servants of the people, and the people want peace and hate war," he continued. "In the sphere of foreign policy, our main care consists in not permitting a new war and in living in peace with all countries. The Communist party of the

Soviet Union and the Soviet government consider the most correct, essential, and just foreign policy is the policy of peace among all peoples, based on a mutual trust, operative and supported by facts and confirmed by facts. The governments must serve their peoples faithfully, and the peoples thirst for peace and curse war."

LUTE SONGS

Players' Musical
Schwab
March 12, 13, 14

LESS THAN 1% of humanity have caused most of the world's troubles.

IF ANOTHER 1% go as CHRISTOPHERS, a trend for the better can be started.

CHRISTOPHERS, Inc.

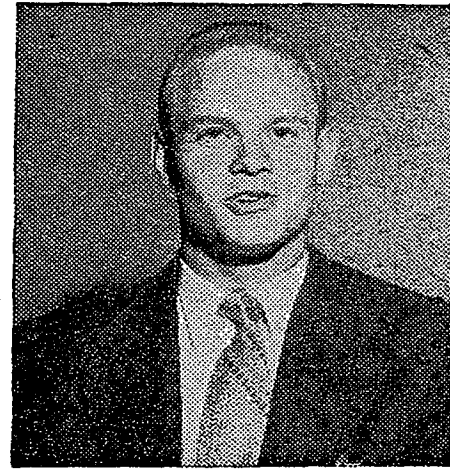
Write to: Box 1635—McKee Campus

MY QUESTION TO THE G-E STUDENT INFORMATION PANEL:

"What qualities do I need for a successful career with a company like General Electric?"

... HARRY K. LEADER, Lafayette College, 1954

Two answers to this question, given at a student information meeting held in July, 1952, between G-E personnel and representative college students, are printed below. If you have a question you would like answered, or seek further information about General Electric, mail your request to College Editor, Dept. 221-6, General Electric Co., Schenectady, N. Y.



CLASSIFIEDS

WANTED

RIDE TO North Carolina Wed., April 1. Call Ann Jesnak 6189.

EXPERIENCED MEN and women counselor for children's summer camp. Apply Summit Lake Camp, 6047 Washington Ave., Phila. 43, Pa.

MALE ROOMMATE by March 14 to share room equipped with cooking facilities. Conveniently located. Inquire at 226 W. Beaver.

LAUNDRIES TO do. Men's preferred. Phone 3543.

WANTED JOB playing guitar with dance band. Call 7712 in the evening.

FOR RENT

HALF—quiet room in ranch house. Private entrance, bath, lounge, phone sundeck. Close to campus. Phone 2584. Male.

FURNISHED Apt: 2 room combination living room-bedroom and kitchen; semi-bath. Married couple or secretary preferred. Call 2335.

HALF OF select first floor corner room—running water, for male student. Colonial, 123 W. Nittany Ave. Phone 4850 ask for C.R.

ONE VERY large double room with single beds. Quiet place one block from campus. Men only. Phone 7686.

LOST

PLEASE RETURN A.F.R.O.T.C. coat, black gloves in pocket, taken from 110 E.E. 3/3/53. I have yours. R. Humphreys ext. 1191.

GRAY TRENCH Coat Saturday night at Pi Kappa Alpha. A gray top coat with gray kid gloves in pocket was left. Please call Jim McGott at 2220 between 5 and 10 o'clock.

SWISS WATCH white gold, black band. Town on Friday night. Personal value. Reward. Rev. 373 Simmons.

NAVY BLUE Umbrella with colored border, cane handle—Osmond or Sparks on Friday. Contact 445 Simmons.

FOR SALE

THIS WEEKEND ONLY! Tickets to "Lute Song," Players' musical, at SU.

MISCELLANEOUS

IF YOUR typewriter needs repairing just dial 2492 or bring machine to 633 W. College Ave. But call first.

DEAR JOHN I will go to the L.F.C.—Panhel Ball with you, but for goodness sake don't split your ticket. I want to dance all night to Johnny Long's orchestra.



G. C. HOUSTON, Manufacturing Services Division . . . While this is a rather broad question, I am sure it is one of real importance to any young man starting out in industry and looking forward to a position of responsibility in any of our successful industrial enterprises.

The mere asking of this question indicates that the individual has a definite goal or objective. This is important since progress can be made only if we attempt to reach a well-defined objective—even though it may be modified to some extent in the light of later experience. In G.E. we are looking for young men who have not only determined their objective but who are ready to work for it—who accept responsibility and have ability to get things done—who work well with others—to be a part of the team.

This calls for other qualities essential to long range success. We look for the enthusiastic individual, one not easily discouraged, and who can inspire the confidence of his co-workers. We desire individuals who show imagination and good judgment—particularly the ability to look ahead and maintain perspective beyond the immediate situation. Finally, we cannot overlook the qualities of loyalty and dependability since these are important in steering the individual through periods of discouragement which occur in every career.

When you decide on your business affiliation, make sure you associate yourself with a company that is soundly managed, that has a good business future, and that is the kind of company you would like to be a part of for the long pull.

E. S. WILLIS, Employee and Plant Community Relations Services Division . . . A successful career with a company like General Electric is built on the same qualities that contribute to success in any endeavor. However, in G.E., there is additional opportunity to develop these qualities because of the wide variety of training sources and openings which are available.

Basic qualities needed for any successful career include an open mind, willingness to accept responsibility, persistence, adaptability, co-operativeness, and common sense intelligence. Others such as physical well-being, ability of expression, and sound inquisitiveness also go to make up a truly qualified individual.

Most important is the fact that General Electric offers a wealth of opportunity to develop special capabilities and talents. The broad selection of training courses, in any chosen field, gives you a chance to sharpen your basic training and abilities. By decentralizing operations into about 70 different businesses, there is opportunity to see—in comprehensible dimensions—the full operation of the business. It means, too, that senior managers and young employees are more closely associated—a real advantage for the young man on his way up.

Also, our business requires specialists as well as managers. Thus, there are equal chances for success for those who concentrate in particular fields such as research, design, accounting, and planning.

So set your cap for a goal. And capitalize on your native qualities, which fortunately are different with each of us.



You can put your confidence in—

GENERAL ELECTRIC