

Sale of Exams Being Studied

Investigation of final examination sales is being continued, and progress has been made, Ben Euwema, dean of the School of Liberal Arts, commented yesterday.

The investigation has been passed to the Liberal Arts school because most of the reported examinations sold were in that school, Wilmer E. Kenworthy, director of student affairs, has said.

The school does not have sufficient information to bring any student before a disciplinary committee, Euwema said.

Block and Bridle Club

Dr. Leonard F. Miller, professor of farm management, will speak to the Block and Bridle Club on "The Mutual Security Administration in European Agriculture" at 7 p.m. Tuesday in 206 Agriculture.

Former English Prof To Give Readings

Theodore Roethke, nationally known poet and former Penn State English professor and tennis coach, will present a reading of his poems 8 p.m. Wednesday in 121 Sparks. He is the first speaker in the current Simmons lecture series.

Job Applicants Asked To File Schedules

Students wishing jobs for the spring semester should file their schedules at the Student Employment Office as soon as possible. John Huber, supervisor of student employment, has announced. Failure to do so will place their names on the inactive list.

Fifty per cent of the students on last semester's active list have not filed their schedules. It is impossible to refer students to jobs unless their schedule is known.

Music Faculty To Give Recital

A program of bass solos and piano selections will be presented at the third faculty recital, 4 p.m. Sunday in Schwab Auditorium. Herbert W. Beattie, assistant professor of music, will sing, and Edwin W. Gamble, instructor of music, will be heard at the piano. On the program will be "To che ne'otio (Monteverdi), songs composed by Charles Ives and Beattie, and arias from Bach, Mozart, and Verdi. Gamble will offer piano selections by Debussy and Bartok.

SDT to Honor Initiates At Valentine Party

Sigma Delta Tau will hold a Valentine's Day dance in honor of its new initiates from 8:30 to midnight tonight at Phi Epsilon Pi. Eli Arenberg will furnish the music for the dance, and there will be special entertainment in honor of the initiates at 10:30.

RILW--

(Continued from page one)
Kappa Phi; the Rev. Paul W. Lingle at Delta Upsilon; Dr. E. H. Freund at Delta Sigma Phi; the Rev. Fred Knieriem at Thompson Hall; and Professor Robert Mickey at Simmons Hall.

Any group of 25 or more persons wishing a guest speaker to lead in religious and philosophical discussion may contract one by calling the Penn State Christian Association, 304 Old Main, and stating the topic desired for discussion, Griffith said.

Special features of the week will include observance of the Forty Hours of Devotion at Our Lady of Victory Church Monday and Tuesday. Ash Wednesday services at Our Lady of Victory Church and St. Andrew's Episcopal Church, communion service at the Lutheran Church Wednesday morning, and Sabbath eve services at Hillel Friday night.

The Chapel Choir and a choir from Hillel, under the direction of Mrs. Willa C. Taylor, will offer a special musical program Thurs-

day night in Schwab Auditorium. Religion-in-Life Week activities for today, tomorrow and Monday: Today: 6 p.m. Kick-off dinner for student leaders, local clergy and guests; Westminster Foundation. Tomorrow: 10:55 a.m. College Chapel—Schwab Auditorium. 3 p.m. Dean's Tea—Simmons Hall lounge; Speaker: Dr. E. A. deBordenave. 6:30 p.m. Youth Fellowship meetings—Local Churches. 8 p.m. Panel Discussion—10 Sparks; Speaker: Dr. E. A. deBordenave. Monday: Forty hours of Devotion—Our Lady of Victory Church. 8 a.m.-5 p.m. Classroom discussions. 8:30 a.m. Morning devotions—WMAJ. Noon Faculty Luncheon Club; Speaker: Dr. E. A. deBordenave. 4-5 p.m. Discussion "The Student and the University"—Hamilton Hall lounge. 5-7:30 p.m. Fireside discussions at dormitories and fraternities. 8 p.m. Group discussion "The World Struggle"—10 Sparks.

COME TO CHURCH

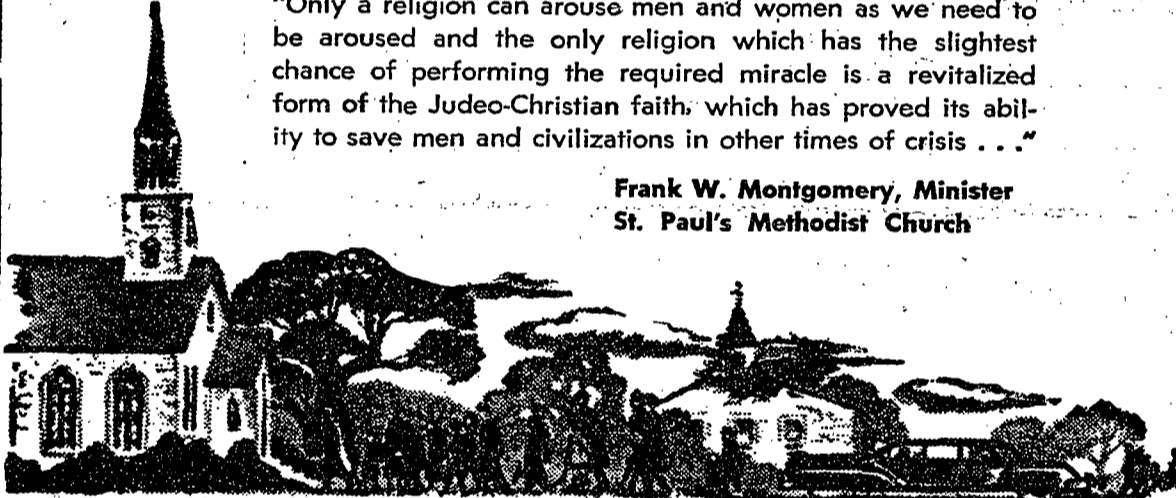


THE WAY THEY SEE IT

World events and personal responsibilities have led the President of the United States to affirm his personal identification with the spiritual resources of organized religion. Here is evidence that underscores in a dramatic way a statement made by Elton Trueblood in his discussion of a remedy in the present world crisis:

"Only a religion can arouse men and women as we need to be aroused and the only religion which has the slightest chance of performing the required miracle is a revitalized form of the Judeo-Christian faith, which has proved its ability to save men and civilizations in other times of crisis . . ."

Frank W. Montgomery, Minister
St. Paul's Methodist Church



College Chapel
Schwab Auditorium
February 15, 1953
Speaker:
Rev. E. A. deBordenave
Rector of Christ Church
Philadelphia
Topic: "The Evil of Being Good"
Anthem:
"O Be Joyful" (Fretchanioff)

St. Andrew's Episcopal Church
Foster Ave. and Frazier St.
The Rev. Jones B. Shannon
Rector
Holy Communion every Sunday
7:45 a.m.
First Sunday 7:45, 10:45 a.m.
Sunday Church School 10:45 a.m.
Morning Prayer and Sermon
10:45 a.m.
Choral - Evensong—5:00 P.M.
Canterbury Club — 6:30 P. M.

University Baptist Church
Nittany Ave. and Burrows St.
The Rev. Robert H. Eads, Pastor
Church School College Class
9:40 a.m.
Morning Worship . . . 10:45 a.m.
Roger Williams Fellowship
5-7:30 p.m.
Supper at cost
Friday Fun Night . . . 7:30 p.m.

Free Methodist Church
Sparks Street
W. College and West Beaver Ave.
Sunday School . . . 9:45 a.m.
Sunday Service . . . 10:45 a.m.
Young People's Service 7:00 p.m.
Sunday Evening Service 7:30 p.m.
Prayer Meeting, Wed. 7:30 p.m.

- ALPHA CHI OMEGA
- ALPHA CHI RHO
- ALPHA EPSILON PHI
- ALPHA OMICRON PI
- BEAVER HOUSE
- CHI OMEGA
- COLLEGIAN
- DELTA THETA SIGMA
- DELTA Upsilon
- DELTA ZETA
- KAPPA ALPHA THETA
- KAPPA DELTA RHO
- LIBERAL ARTS
- STUDENT COUNCIL

St. John's Evangelical United Brethren Church
Beaver Ave. and Burrows St.
The Rev. Melvin W. Whitmire,
Pastor
Morning Worship and
Sunday School . . . 9:30 a.m.
Student Fellowship Meeting
6:00 p.m.
Vespers 7:30 p.m.

Grace Lutheran Church
College Ave. and Atherton St.
The Rev. John F. Harkins, D.D.,
Pastor
and
The Rev. Arthur Ruths
Campus Pastor
Matins Service 8:30 a.m.
Church School 9:30 a.m.
The Service 10:45 a.m.
Lutheran Student Meeting
6:30 p. m.
Vespers 7:30 p.m.

B'nai B'rith Hillel Foundation
224 S. Miles St.
Rabbi Benjamin M. Kahn,
Director
Friday Evening Services 8:00 p.m.
Sunday 6:30 p.m.

St. Paul's Methodist Church and Wesley Foundation
College Ave. and McAllister
The Rev. Frank W. Montgomery,
Pastor
Miss Dorothy Blanchard
Program Director
Student classes 9:30 a.m.
Morning Worship 10:45 a.m.
Fellowship Supper and Program
5:15 - 7:30 p.m.

- LAMBDA CHI ALPHA
- MINERAL INDUSTRIES
- STUDENT COUNCIL
- PENN STATE
- BOOK EXCHANGE
- PHI EPSILON PI
- PHI MU
- SIGMA ALPHA EPSILON
- SIGMA DELTA TAU
- SIGMA PHI ALPHA
- SIGMA PI
- TAU PHI DELTA
- THETA CHI
- THETA PHI ALPHA

Roman Catholic Church
Fairmount Ave. and Frazier St.
The Rev. John C. O'Leary
Rector
and
The Rev. Richard Walsh
Sunday during regular College
Session 8:00, 9:00, 10:00, 11:00
and 12:00 a.m.
9:00 a.m. Mass at Schwab Aud.
Holy Days — 6:30, 7:00, 8:00 a.m.

First Church of Christ Scientist
133 West Beaver Ave.
Sunday School 9:30 a.m.
Sunday Service 11:00 a.m.
Testimonial meeting
Wednesday 7:30 p.m.

The Presbyterian Church and Westminster Foundation
Beaver and Frazier St.
Rev. Andrew E. Newcomer, Jr.
Pastor
Student Breakfast . . . 9:00 a.m.
Church Sunday School 9:30 a.m.
Sunday Church Service . . 10:45
Westminster Fellowship 6:30 p.m.
Evening Church Service 7:30 p.m.

Faith Evangelical and Reformed Church
College Ave. & Miles St.
The Rev. Albert Asendorf
Sunday School 9:30 a.m.
Morning Worship . . 10:45 a.m.
Student Fellowship . . 6:30 p.m.

Friends Meeting
318 Atherton St.
School for Youth and Adults
and Student Discussion
9:30 a.m.
Meeting for Worship. 10:45 a.m.
Student Meeting 7:00 p.m.

Church of Christ
Woodman Hall
Albert A. Gonce
Minister
Bible Class 10:00 a.m.
Worship 11:00 a.m.

This Message is Brought to You Through the Courtesy of College Organizations