

Players --

(Continued from page one)
guise of her husband Amphitryon to insure his conquest. The demigod Hercules is conceived at their tete-a-tete.

Complications arise when Jupiter realizes the sincere regard Alkmena maintains for her husband. When Jupiter is to visit Alkmena again publicly she contrives to substitute the queen of Sparta in her bed. Unknown to her the real Amphitryon returns and is unwittingly unfaithful. Alkmena appeals to Jupiter to reign oblivion upon their sins. In the spectacular climax of the play Jupiter gives his blessing and retreats to Olympus, leaving the couple in a burst of amber light as a symbol of their fidelity.

Sharp interest is added by Players' multileveled set of Amphitryon's palace at Thebes, above which Jupiter and Mercury perch on clouds as "Peeping Toms" spying on the activities of Alkmena. At times the set is too confining to the action, as in the prologue, and the dialogue appears sluggish and wordy. Mercury seems to evade the spotlight and he, as well as the audience, is lost in dark-

ness. Last night an osculating fiber glass cloud also proved a minor distraction.

Oswalt Scores Again
Under the direction of Dennis Sherk, graduate assistant in dramatics, the cast tries hard to be convincing, but for all their ranting and cavorting about they act as though they just don't believe one word of it.

As the faithful Alkmena, Players' favorite Jolly Oswalt scores another fine performance. Her enunciation and expression are flawless, but she could limit the use of so many gestures.

Gordon Greer does admirably in the roguish role of the libertine Jupiter. His intellectual sincerity contributes much to the satire of the play. In the role of Amphitryon, John Aniston is rather uninspired, but acceptable.

Sid Archer has the time of his life romping about the clouds and stage as Mercury. Last night's audience found a strange fascination in the glittering gold dust sparkling on his eyes.

Moribund 2d Act
Looking perfectly ridiculous in a short blue tunic, Richard Newweller, as the droll trumpeter who could play only one note, livened the first and third acts with his subtle comments.

Alyce Mears did much to re-

vive interest in a moribund second act with her brassy interpretation of Leda, the queen of Sparta and one of Jupiter's former confidants. Others in the cast are Al Sarkos, Sosie; Bill Musser, Warrior; Carol Strong, Nenetza; Beverly Masters, Kleantha, and Velma Kaiser, Echo.

One of the greatest assets of the play was the effective lighting, especially during the second act sunrise and the tribute to Amphitryon and Alkmena at the end.

Brilliant wigs and costumes, although still familiar under their dye as wardrobe from another season's "Antigone" also contributed colorful appeal to the play.

Cabinet --

(Continued from page one)
ious groups and present the 20-cent fee approval for consideration there. At the Feb. 5 meeting of cabinet, the 20-cent fee will come up for second vote. Both the first and second votes must receive a two-thirds approval. Last night's approval was unopposed, but received three abstentions.

Emery Richardson, in presenting the radio committee report, stated the three purposes of the station as the training of students in speech, journalism, and other schools; the use of the station

as a means of student expression; and the use of the media for research in radio education and training methods.

Cabinet also heard a report of William Hay, chairman of the Penn State Student Scholarship Fund. Hay told cabinet that the fund has been raised to \$3137.01 since October of last year and added that more donations were expected. The working fund of the stipend money is now \$88.94, Hay said.

Money collected for the fund between now and the end of the semester will be applied to the working fund, from which scholarship money is taken.

CLASSIFIEDS

FOR RENT

TWO TRIPLE Rooms. Call 4953 and ask for Sylvan Taub.

ONE DOUBLE and one single room. Call 2610 or contact 611 South Pugh street.

CONVENIENTLY LOCATED one room apartment—\$50 monthly. Elevator in building. Must sell modern furniture at great sacrifice for \$125. Available immediately. Suitable for faculty member or one or two students. Call 7149 after 5 p.m.

APARTMENT—quiet section, four rooms and bath. Automatic washing and drying facilities, storage space, back porch, TV antennae, parking space. Married couples only. Available Jan. 23. Call 4434.

ATTRACTIVE PRIVATE living quarters and meals for couple with no children in return for baby sitting and help with housework. Call 3103.

DOUBLE AND triple room with hot and cold running water. Call 4850 or 7792. Ask for G.R.

ROOM FOR male graduate student. Colonial Hotel, 123 West Nittany Avenue.

ONE-HALF OF two double rooms, also one single room. Available Jan. 29. Call 4232 after 2 p.m.

COMFORTABLE SINGLE room available for girl or woman. Near campus. Call 7013 after 5 p.m.

DON'T LET finals get you down. Rent a seat at Schwab this weekend for Amphitryon 38. Tickets \$.60—Thurs., \$1.00—Fri. and Sat.

BOARD and ROOM for men at Marilyn Hall, 317 E. Beaver Ave. Reservations being taken for spring semester. Ask for Mrs. Elleard.

TRUCKS. Various sizes and body types. Do that moving job at lowest cost. Local or out of state. Hertz Drive-It-Yourself System, L.I.C., 1020 Green Ave., Altoona, Penna. Phone 2-3200.

FOR SALE

1935 PONTIAC, good condition, very good rubber, radio, heater. First reasonable offer. 112 Hamilton, ext. 1186.

DARK BLUE, pin stripe, double breasted suit, 39 long. \$15.00. Call Tom 4827.

TAKE A break from studying. See Amphitryon 38, at Schwab this weekend. Get your tickets at Student Union now!

WANTED

LAUNDRY TO do. Men's preferred. Call State College 3543.

APARTMENT FOR 2-3 girls near campus. Cooking facilities. Call Lu, 7 Simmons.

SINGLE ROOM with private family in quiet section. Graduating senior. Call 3838.

SHARE ROOM with private bath in exchange for light janitor work in apartment house (no firing). Call Bill, State College 6254 — 7 to 7:30 p.m.

GIRL TO share four room apartment. \$80 per month including room and board. Call 7724.

MALE STUDENT desiring attractive single room in private home in return for certain services. Phone 2133.

RIDES AND PASSENGERS WANTED

RIDE TO Ithaca, N.Y., Feb. 5 or 6 and/or return Sunday, Feb. 8. Call 257 Atherton Hall.

SUNDAY, RIDE to Pittsburgh for 2. Any time in the afternoon. Call Chuck Oberance 4444.

RIDE WANTED to N.Y.C. or vicinity. Leaving Wednesday, Jan. 21 at 3 p.m. or later. Call 412 McElwain.

MISCELLANEOUS

IF YOUR typewriter needs repairing just dial 2492 or bring machine to 633 W. College Avenue.

BY JUPITER, it's divine. Amphitryon 38, at Schwab this weekend. Tickets at S.U. 60c — Thurs; \$1 — Friday and Saturday nite.

LOST

CLASS RING on key chain, probably on Ag Hill. Call Richard, State College 2919.

KNITTING BOX, green imitation alligator, contained half-knit cable-stitch sock. Call Lynn, 129 Simmons or 8441-543.

GREY GABARDINE Topcoat in Corner Room on Dec. 17. D.R.A. on inside pocket. Call Dave Aten 4979.

ONE MASONIC Ring with black onyx stone. Lost in West Dorm area. Call Eileen Johnson, ext. 1097. Reward.

FOUND

TOOK GRAY Jacket by mistake Monday from 101 Eng. C. Would like to exchange for my own. Call Frank 2994.

BLUE JACKET outside 14 Sparks Monday. I have yours. Call Forrest Fryer, 202 McKee. Please! Graduating senior.

Now—see the cars that all the excitement's about!

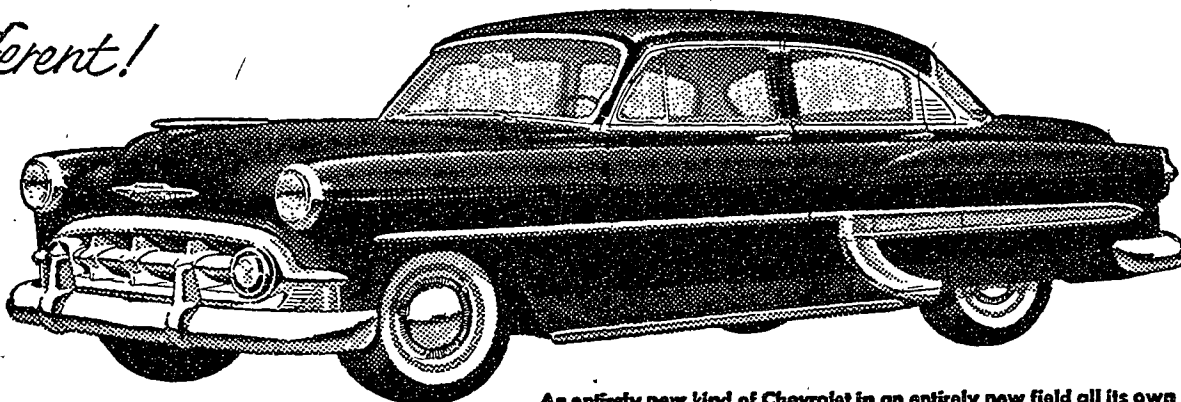
CHEVROLET'S 3 GREAT NEW SERIES FOR 1953

Wonderfully different!

THE BEL AIR SERIES

to be compared only with higher-priced cars!

The glamorous Bel Air Series for 1953 is truly a new kind of Chevrolet. Four new Bel Air models—4-Door Sedan, 2-Door Sedan, Convertible, Sport Coupe—create a wonderful new class of cars.



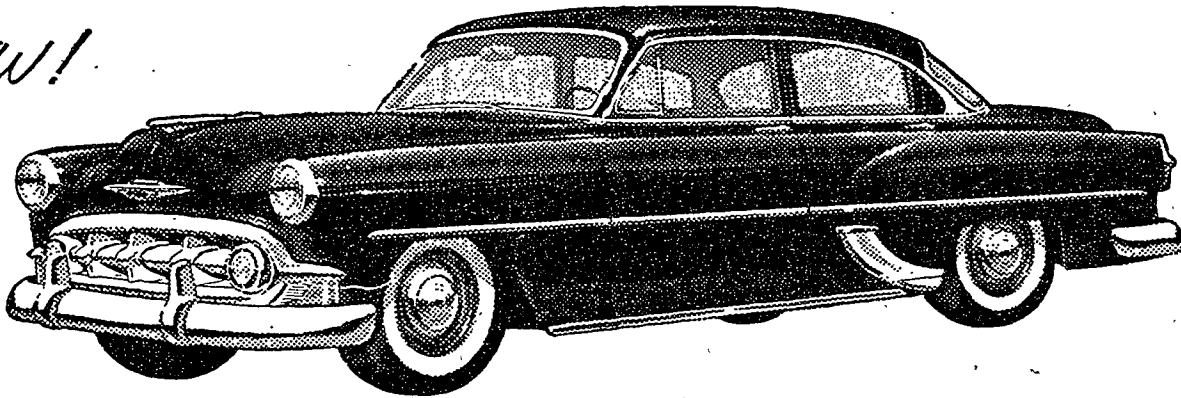
An entirely new kind of Chevrolet in an entirely new field all its own

Startlingly NEW!

THE "TWO-TEN" SERIES

sensational advances from bumper to bumper!

The "Two-Ten" Series offers: two new station wagons—the Townsman and "Two-Ten" Handyman—the 4-Door, 2-Door, Convertible, Club Coupe and Sport Coupe.

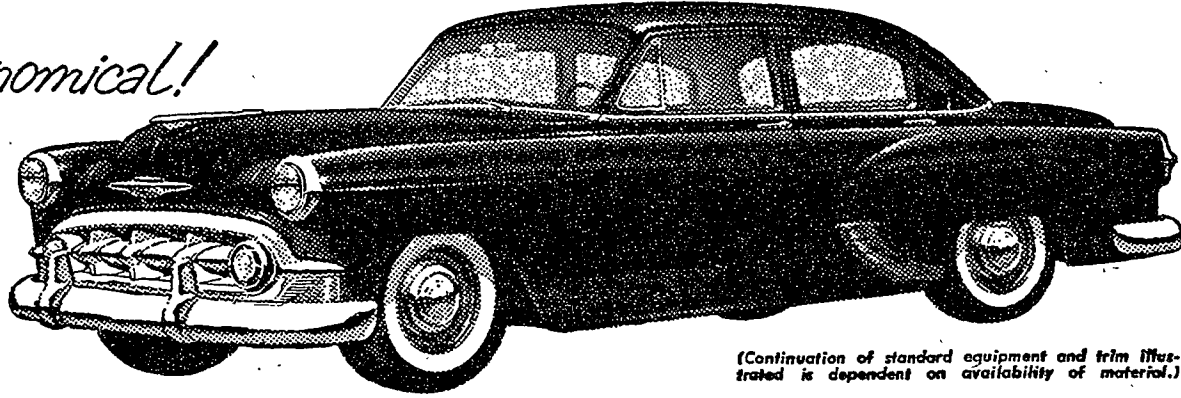


Amazingly economical!

THE "ONE-FIFTY" SERIES

lowest priced of all quality cars!

Smart new Chevrolet styling and advanced features! Five models include the 4-Door and 2-Door Sedans, Club Coupe, Business Coupe, "One-Fifty" Handyman.



(Continuation of standard equipment and trim illustrated is dependent on availability of material.)

The great new Chevrolet line for 1953 brings you a car for any purpose. Choose high-compression power with the new 115-h.p. "Blue-Flame" engine teamed with new Powerglide* for the finest automatic driving. Or choose the high-compression 108-h.p. "Thrift-

King" engine for finest standard driving. Choose the improved standard steering, or new Power Steering, optional at extra cost.

Come in and see the most wonderful selection in the low-price field—and it's yours at lowest cost!

*Combination of Powerglide automatic transmission and 115-h.p. "Blue-Flame" engine optional on "Two-Ten" and Bel Air models at extra cost.



MORE PEOPLE BUY CHEVROLETS THAN ANY OTHER CAR!

Entirely NEW through and through!

SEE IT AT YOUR CHEVROLET DEALER'S!