

The New First Family



DWIGHT D. EISENHOWER, President-elect of the United States, takes a brief moment to relax with his wife Mamie (right), his daughter-in-law Mrs. John Eisenhower, and his three grandchildren.

Ike Plans Visit—

(Continued from page one)

paration of the new budget which goes to Congress in January. For the visit to Korea, in fulfillment of a campaign pledge which was one of the factors in his landslide victory, Eisenhower preferred a military plane. He told Truman he would let Secretary of Defense Lovett know when he wants to leave.

Gov. Stevenson of Illinois faded into the silence of defeat. As his hopes of carrying on a 20-year Democratic dynasty collapsed around him, Stevenson also had summoned his fellow Americans to unite behind his conqueror and advance together "in freedom and dignity and peace."

But already weighty problems at home and abroad are pressing in on Eisenhower.

Associated Press returns at 8:45 p.m. (EST) from 134,454 of the country's 146,361 voting units showed the popular vote: Eisenhower 31,691,542 Stevenson 25,501,568 Total 57,193,110 Eisenhower's percentage: 55.4

The Congress which will handle his legislative proposals will have no more than a razor edge Republican majority in either Senate or House.

In the past, a coalition of Republicans and Southern Democrats has been able pretty much to have its own way on domestic affairs, often balking the will of the White House. How well Eisenhower can work with such a line-up is a matter of uncertainty. But he did make many political friends in Dixie in a campaign that split up the once Solid South.

Early last night, the congressional scoreboard stood like this, with a number of races still undecided:

House: 435 seats; 218 required for control. Republicans had elected 218; Democrats 205; Independents 1. Senate: 96 seats; 48 represent control since the Vice President votes in case of a tie, and the "Veep" will be Republican Richard M. Nixon after Jan. 20.

Republicans had 49 including holdovers and Wayne Morse of Oregon, who now calls himself an Independent; Democrats had 47 including holdovers.

Thus Eisenhower's vast margin of victory was very much a personal thing. He outran his party in state after state and failed to take along with him enough Senate and House candidates to establish a firm GOP hold on Congress.

And in some respects, the decision of the electorate seemed to be very much a mandate, a vote of confidence that Eisenhower will labor hard for peace, to fulfill his promise to try for a speedy and honorable end to the Korean War, to wipe out communism and corruption in government.

Free World Views Ike

GIs in Korea—

SEOUL, Nov. 5 (AP)—American troops in Korea greeted the election of Dwight Eisenhower as president with a mixture of cheers and boos today and some voiced a hope he would be able to bring them home.

Brazil—

RIO DE JANEIRO, Brazil, Nov. 5 (AP)—Former President Gen. Eurico Gaspar Dutra said today Brazil will have a friend in the White House in President-elect Eisenhower. He predicted Eisenhower would further strengthen U. S. relations with Latin America.

Republic of Korea—

UNITED NATIONS, N.Y., Nov. 5 (AP)—Y. T. Pyun, foreign minister of the UN sponsored Republic of Korea, today offered his congratulations to the American people on their choice of Dwight D. Eisenhower as president.

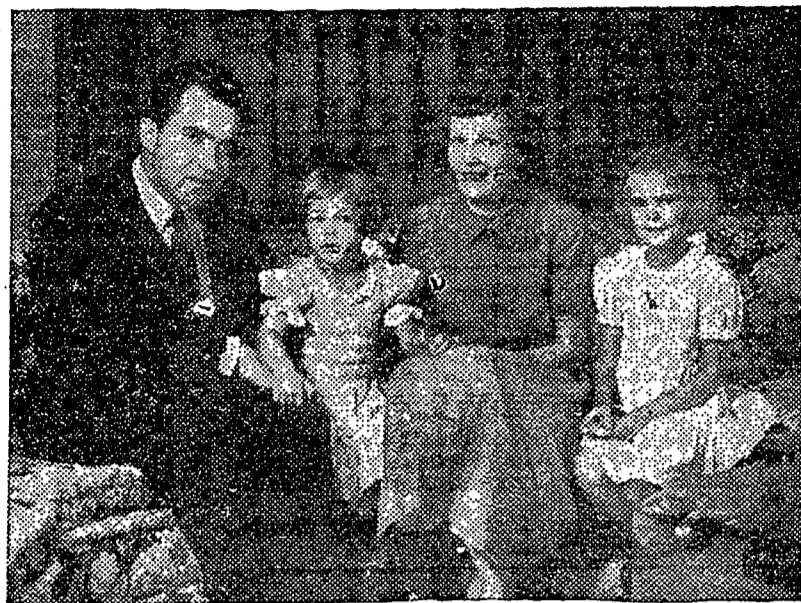
Iran—

TEHRAN, Iran, Nov. 5 (AP)—Foreign Minister Hossein Fatemi said today U. S. policy toward Iran has attempted to block Iran's national aspirations, and he expressed hope that under Gen. Eisenhower this policy will be reversed.

Belgium—

BRUSSELS, Belgium, Nov. 5 (AP)—Prime Minister Jean Van Houtte said today, "We are convinced that Eisenhower, who won the war, will also win the peace. He knows European problems."

Nixon and Family



SENATOR RICHARD M. NIXON, newly-elected vice president of the United States, sits in his California home with his attractive wife, Pat, and blonde daughters Julie and Patricia. The only missing member of the Nixon clan is Checkers, the Senator's Texan cocker spaniel.

Ike Captures State By Large Margin

PHILADELPHIA, Nov. 5 (AP)—Dwight D. Eisenhower—piling up a majority which stunned Democrats in Pennsylvania—cut deeply into every Democratic stronghold but Philadelphia to capture the Keystone State's 32 electoral votes with a crushing bulge of more than 251,000 votes.

While all but the general's staunchest supporters seemed startled

at his strength, the greatest outpouring of voters in Pennsylvania history — approximately 82 per cent of the 5,340,936 registered — carried in with the Republican President elect every state wide GOP candidate, including U.S. Senator Edward Martin.

The GOP took a shellacking in the Quaker City, the worst since 1940. Democrat Adlai E. Stevenson won Philadelphia, in the city's biggest voter turnout ever, won by 160,247—a majority that paralleled the days of Franklin D. Roosevelt. In 1948 Mr. Truman had a very slim margin.

Republicans will have one more vote in the Senate but ten less in the House when the 1953 General Assembly tackles Pennsylvania's tax problems next January.

The Democratic gain in the House, half of which came in the Philadelphia delegation, left the Republicans with only five seats more than they needed to control the 208-member chamber.

The GOP will hold a probable 110-98 margin in the House. During the 1951 marathon session, it was 120 Republicans, 87 Democrats, and one vacancy.

In the Senate, the lineup for next year will be 31 Republicans and 19 Democrats. That margin is enough to pass a bill, but is insufficient to confirm gubernatorial appointments where a two-thirds majority of 34 is required.

Election Results at a Glance

By the Associated Press

The latest election returns gave President-elect Dwight D. Eisenhower an overwhelming majority of electoral votes—442 to 89.

The General also lead in popular voting by 23 and one-half million to 19 and a third million for Gov. Stevenson. The Governor officially conceded the election at 1:45 a.m. yesterday after it was certain that he could not pull enough votes from the large cities to swing the election.

Here is a rundown of the states and how they voted.

State	Voting Units	Units In	Popular Vote		Electoral		Nev.	353	315	22,602	43,706	3R
			Adlai	Ike	D	R						
Ala.	2,505	2,229	253,394	139,067	11D	N.H.	297	297	106,569	165,888	4R	
Ariz.	505	425	72,809	104,177	4R	N.J.	3,840	3,840	1,009,195	1,365,243	16R	
Ark.	2,382	1,726	167,758	133,146	8D	N.M.	894	621	74,267	94,227	4R	
Calif.	20,746	15,532	1,458,504	1,891,693	32R	N.Y.	10,348	10,348	3,070,622	3,934,069	45R	
Colo.	1,650	1,160	165,337	256,368	6R	N.C.	2,036	1,841	604,723	505,477	14D	
Conn.	169	169	481,482	610,989	8R	N.D.	2,294	1,439	54,203	129,852	4R	
Del.	278	240	62,228	65,770	3R	Ohio	10,877	10,661	1,554,082	2,040,903	25R	
Fla.	1,684	1,599	415,538	503,594	10R	Okla.	3,859	3,792	432,003	504,458	8R	
Ga.	1,814	1,309	348,392	160,613	12D	Ore.	2,269	1,491	141,660	238,007	6R	
Id.	865	827	93,559	177,841	4R	Penna.	8,472	8,471	2,129,896	2,390,763	32R	
Ill.	9,680	9,602	1,995,098	2,463,564	27R	R.I.	284	284	200,209	206,351	4R	
Ind.	4,202	4,155	794,040	1,115,644	13R	S.C.	1,563	1,426	165,172	154,404	8D	
Iowa	2,481	2,367	423,720	761,147	10R	S.D.	1,950	1,819	84,165	187,757	4R	
Kan.	2,851	2,614	239,374	538,400	8R	Tenn.	2,495	2,377	390,628	396,682	11R	
Ky.	4,135	3,601	443,516	434,326	10D	Texas	254	250	827,696	955,962	24R	
La.	2,118	1,676	286,508	261,092	10D	Utah	969	940	133,759	191,972	4R	
Me.	625	617	118,545	232,275	5R	Vt.	246	246	43,220	109,239	3R	
Md.	1,428	1,428	391,744	493,947	9R	Va.	1,795	1,783	270,158	347,247	12R	
Mass.	1,967	1,967	1,085,821	1,293,800	16R	Wash.	4,381	3,254	332,031	398,719	9R	
Mich.	4,480	4,305	1,178,532	1,491,839	20R	W.Va.	2,841	2,662	429,560	394,704	8D	
Minn.	3,793	2,800	444,882	583,631	11R	Wis.	3,225	3,182	609,637	958,173	12R	
Miss.	1,790	1,448	147,265	100,468	8D	Wyo.	677	598	37,307	64,455	3R	
Mo.	4,771	4,668	873,575	892,909	13R	Total	146,347	131,498	24,948,441	31,024,749		
Mont.	1,137	726	66,960	93,750	4R						D—89	
Nebr.	2,067	1,918	166,476	363,620	6R						R—442	

January Draft Can Set at 6027 in Pa.

HARRISBURG, Nov. 5 (AP)—The Pennsylvania draft call for January of 1953 was set at 6027 today by State Selective Service Headquarters.

Lt. Col. Henry M. Gross, state draft director, said all men inducted under the call must have celebrated their 20th anniversary before the date of induction.

The new quota is 671 higher than that set for December and is in line with the national draft quota. This month's figure was almost 200 higher than the January call at 6204.

Stevenson Sends Concession Wire

NEW YORK (AP)—Following is the text of the concession telegram which Gov. Adlai E. Stevenson sent early today to Gen. Dwight D. Eisenhower:

"The people have made their choice and I congratulate you. That you may be the servant and guardian of peace and make the day of victory a door of hope is my earnest prayer. Best wishes."

TREAT of the WEEK

- CHOCOLATE BROWNIES
- STICKY CINNAMON BUNS

Glenn's Pastries
239 S. ALLEN, ST.

Russia Repudiates U.S. Naval Zone

MOSCOW, Nov. 5 (AP)—Russia tonight gave notice that it refuses to recognize as legal a U.S. naval defensive zone in Korean waters. She said the U.S. naval order of Sept. 27 was an extension of a 1950 blockade which violated freedom of the seas.

The
TAVERN

ITALIAN SPAGHETTI
with Meat Sauce

BEEF MARZETTI
EN CASSEROLE

CHICKEN PIE

MIXED SEAFOOD PLATE

PRIME SIRLOIN STEAKS

Today WARNER theatres

Catharam

DANA ANDREWS
MARTA TOREN
"ASSIGNMENT
PARIS"

State

RICHARD CONTE
IN
"THE FIGHTER"

Nittany

OPEN 6:00
CHARLES MCGRAW
"NARROW MARGIN"

TONIGHT -- 7-9 p.m.

LUTHERANS

Have your contributions ready.

Help Us Go Over the Top

\$\$\$ \$

GIVE GENEROUSLY