

Eng Council Approves Revision

Proposed changes in the Engineering Student Council constitution have been approved for the first time by the council. Changes must be approved twice before final adoption.

The changes, including procedures in the election of council members and officers, and voting, were introduced to the council by Thomas Kidd, constitutional committee chairman.

The council approved an amendment to a proposed change whereby the president is not restricted to a single term. The original proposal called for the president to be either a sixth or eighth semester student with two semesters of undergraduate work remaining.

The change would permit an architecture student who studies five years as an undergraduate to become council president either as a senior or as a ninth-semester student.

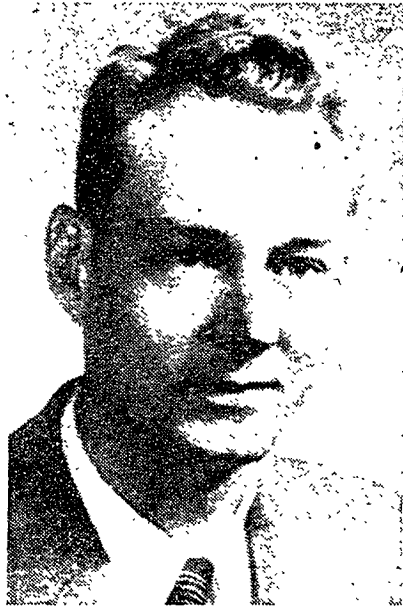
The change also provides for the president to be elected by the outgoing council. Under the present constitution the president is elected by both the outgoing and new councils.

One change in the membership code will permit the nomination of a candidate by write-in ballot, according to Kidd. Previously all nominations were to close one week before elections. Supervision of elections by the elections committee is another constitutional change. The elections will be held school-wide, instead of each department holding a separate election. Another section of the code was changed to provide for elections being held at the same time elections are held in other schools.

Other changes in the constitution include the voting by certified alternates in the place of council members, and the requiring of candidates for council to have a 1.2 All-College average, Kidd said.

BEAT SYRACUSE

New Metallurgy Head



Dr. Amos J. Shaler

Shaler Named New Head Of Metallurgy

Dr. Amos J. Shaler, associate professor of metallurgy at Massachusetts Institute of Technology, has been named professor and chief of the division of metallurgy at the College.

Dr. Milton S. Eisenhower said Dr. Shaler will assume the position in January. He succeeds Dr. Jay W. Fredrickson, who resigned to accept a position with Dow Chemical Co.

A graduate of MIT in physics, Dr. Shaler served with the metallurgical industry in South Africa and in 1943 became director of the Industrial Railways Equipment Co. He constructed and operated its cemented-tungsten-carbide plant for 2 1/2 years.

Dr. Shaler returned to MIT in 1945, received his doctor of science degree in metallurgy, and was appointed to the faculty there. On leave of absence in 1950-51, he was scientific liaison officer with the Office of Naval Research, European branch. At present he is a consultant to the Atomic Energy Commission and to various industrial firms.

IFC Joint Buyers To Meet Tonight

Members of the Interfraternity Council large-scale buying committee for fraternities will discuss the program with house presidents at 7:30 tonight in 219 Electrical Engineering, William Hafley, committee chairman, has announced.

The committee has been incorrectly called the Fraternity Marketing Association. Until incorporation papers listing this name are complete, it must be referred to as the joint buying program for fraternities. The incorporation papers are expected to be completed soon, Hafley said.

4 Groups --

(Continued from page one)

tions from alumni and friends of the College, and by the College itself.

Money is allocated from this fund according to recommendations of the committee on administration and the faculty committee on scholarships.

Money is given to qualified athletes for expenses such as room, board, tuition, and books if they are in need of financial aid, are maintaining a 1.0 All-College average, and are continuing normal progress with their class.

The State College Area Joint Community Fund, receiving one per cent of Campus Chest receipts, is the joint fund of the area. Money from this fund goes to 12 organizations including several teen-age clubs, Boy and Girl Scout troops, the Centre County Hospital, and the Crippled Children's Society.

The WSGA Christmas Fund receives six per cent of the Campus Chest. The WSGA distributes the money in thirds to the Mifflin County Child Welfare Services, the American Women's Hospital Association, and the Ralph Dorn Hetzel Loan Fund.

Money sent to the Mifflin County group is used to buy Christmas gifts for orphaned children. The Women's Hospital Association, which functions both in the United States and foreign countries, spends its contributions to pay for the services of patients. The Hetzel Loan Fund lends amounts up to \$50. This money may be borrowed at any time and is open to all students.

Four Students On Probation Till Graduation

Four students have been placed on disciplinary probation by the College disciplinary committee because they were involved in a theft of furniture from bars, the Dean of Men's office announced. The probationary period began yesterday and will continue until their graduation.

After a hearing before a justice of the peace, the case was referred to the Senate disciplinary committee for action. Because of College policy, the students' names were not announced.

Two are seventh semester dairy husbandry majors, one a seventh semester labor management re-

Poll Gagsters Promise Armistice Day Holiday

Gagsters at the polls today were promising to declare a holiday a week from today if their candidate wins.

Some unsuspecting voters were enthusiastic about the prospective day off until they realized next Tuesday, Nov. 11, is Armistice Day, already a holiday.

lations major, and the fourth, a sixth semester education major.

Students on disciplinary probation may not participate in any extracurricular activity except as ordinary members. They may not hold any office or committee membership or take part in the group's activities. This probation also forbids any participation in athletics.

CLASSIFIEDS

FOR RENT

DOUBLE ROOM: 1/2 double room. Call Mrs. Patton, 6643.

SINGLE ROOM in quiet new home. 318 W. Prospect Ave.

DOUBLE ROOM: new house at Klingner Heights. Privacy and conveniences. Only \$1.00 a night including breakfast. Phone 8612.

FOR SALE

PRACTICALLY NEW Ping Pong table and set. \$25.00. Call 7032.

NEW TUX for sale. Worn once. Size 36. Phone 2337 after 6:30. Ask for Jim.

EASY RINSE - spin dry washer. Two years old; excellent condition! Contact Reed, after 6 p.m. Phone Boalsburg 9-6301.

CAR FOR the next game. Chev. 1936 sedan. Inspected, heater. \$110.00. Call 4457 State College.

2 1/2 x 3 1/2 FACEMAKER Crown Graphic 4.5 lens 1/800 shutter accessories, excellent condition, reasonable price. Call Al, Room 112 Ext. 952.

FOR OVERSEAS - special cookies. Frida Stern, 122 E. Irvin Ave. Phone 4818.

1942 PONTIAC 4-door, 6-cylinder, good condition; radio, heater, defroster; must sell; \$400. Dick, Pollock 11-85.

WANTED

RIDE TO Syracuse or vicinity after 4:00 p.m. Thursday, Nov. 7 or anytime Friday, Nov. 8. Call Todd, 7212.

STUDENTS INTERESTED in information concerning job opportunities. Armstrong Cork representative speaks to IRRS 7:30 Thursday, 317 Willard.

TICKET for the Community Concert series. Contact Leonard Goodman, 133 McAllister St. Phone 7868.

RIDE WANTED to Allentown, Bethlehem, or vicinity for two persons at 3 p.m. Friday. Call Dave Jones, TKE.

WANTED

ALL THESE last 50 years for the AOPi Mardi Gras Fashion Show "As Time Goes By."

RIDE TO Philadelphia or vicinity, Friday Nov. 7 after 4 o'clock. Call Margaret, ext. 1095.

THREE GIRLS desire fourth girl to share an apartment. Call 2791.

LOST

FIFTY YEARS of Time at the AOPi Mardi Gras booth. Come see it fly.

LEATHER GLOVES lined with bunny fur in 209 Home Economics. Friday morning. Finder call Mary Wasson 4242.

RED WALLET Friday. Please return cards needed. Call Shirley Fry Ext. 74.

GRAY TOPCOAT, wallet in pocket containing valuable papers; at 10 a.m. in E.E. Oct. 31. Contact Earl Dittorener. Nittany 24-13. Phone 5051-234. I have your coat.

BLUE PENN STATE jacket in Schwab Auditorium Wednesday, Oct. 29. Call McCollough 4957.

GREY JACKET with fur collar and blue lining - vicinity of Main Engineering. If found call Don 2590.

BROWN WALLET containing important papers on Monday night between Pollock Circle and Cathaum Theater. Contact Fred 268.

PARKER 51 Pen, blue and grey, between Sparks and Library. Reward. Phone 7069.

BLUE DOUBLE BREASTED suit coat. Size 38. In Osmond, Sparks, or Engineering buildings. Call Don at 3872.

PERSON WHO took Penn State jacket in Penn State diner on Oct. 27, I have yours. My name is inscribed inside jacket. Call Sherman Francisco, ext. 1198.

FOUND

TUX RENTALS for Junior Prom. Get your size in early. Hur's Men's Shop.

...But only Time will Tell



ONLY TIME WILL TELL HOW GOOD A "MOUSER" IS. AND ONLY TIME WILL TELL ABOUT A CIGARETTE! TAKE YOUR TIME... MAKE THE SENSIBLE 30-DAY CAMEL MILDNESS TEST. SEE HOW CAMEL'S SUIT YOU AS YOUR STEADY SMOKE!

CAMEL leads all other brands by billions of cigarettes per year!

Test CAMELS for 30 days for Mildness and Flavor

CAMELS are America's most popular cigarette. To find out why, test them as your steady smoke. Smoke only Camels for thirty days. See how rich and flavorful they are - pack after pack! See how mild CAMELS are - week after week!

