

Booters Host Maryland Today

Lions Seek 2d Victory; Kline Out

Penn State's soccer team expects a hard battle when it faces the strong Terrapins of Maryland fame at Beaver Field this afternoon.

Missing on the Lion Squad is outside left Hubie Kline, who collided with one of his teammates in scrimmage earlier this week.

The Terps are opening their season with this game, while the Lions are working for a second win after defeating Bucknell, 10-1, last Saturday.

Thomann Starts

Southern Conference champions last year, Maryland is missing six of her first-string men. Last year in the mud and rain Maryland lost 1-0 to State.

Replacing Kline will be Lynn Thomann, another one of Coach Bill Jeffrey's untested reserves. Playing beside Thomann will be blonde-haired Don Shirk, one of State's scoring potentials.

Five-goal Jack Pinezich will open at center forward with inside right Ellis Kocher and outside right Bill Norcik flanking him. Pinezich rammed home five against Bucknell last Saturday and the visitors will probably have their eye on him.

Praise for Klaus, Follmer

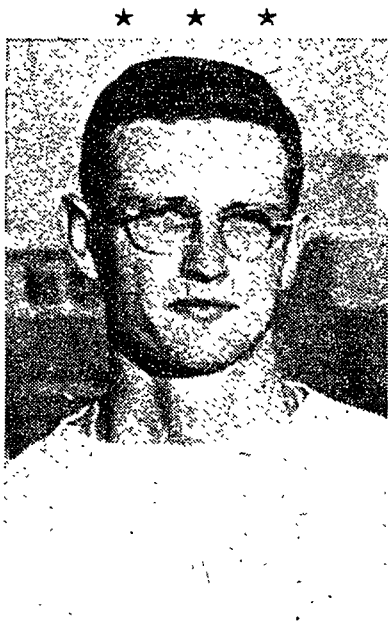
In the halfback positions, Jeffrey will stick to his usual threesome of right halfback Frank Follmer, National Soccer Coaches Association All-American last year, Captain Kurt Klaus, and Ralph Hofmann.

Jeffrey was exceptionally high in praise of Klaus and Follmer last week against Bucknell, but Klaus (besides Kline) was one of two soccermen to come down with an injury, in his case a puffed lip.

Fullback-wise for the Nittany Lions right fullback Paul Dierks and converted lineman Hap Irvin (left) will handle the spots. Bob Harris will start at goalie with Jack Krumrine in reverse.



Ralph Hofmann



Dewey Krumrine

SPhiS, SN, Fireballs Cop IM Grid Contests

By ROY WILLIAMS

In the first game of last night's IM football play the Fireballs romped over Nittany Co-op, 27-0. Laskd was the passing star for the Fireballs as he passed for three TDs and scored one on a 30 yard pass completion.

Three of the Fireball's four touchdowns came in the first half.

Laskd passed 15 yards to Miller for the first one and then caught a 30-yard aerial from Starzyski. Both extra point plays were completed. A TD run of 25 yards by Laskd gave the Fireballs a commanding lead of 20-0 at the half.

Nittany Co-op's defense became more effective in the second half when they held the Fireballs to only one TD. O'Brien hauled in a 15 yard pass from Laskd for the final six pointer. Bilyak completed the scoring of the evening when he tallied the extra point on a pass from Laskd's accurate passing arm.

Sigma Nu Triumphs

Sigma Nu held Sigma Alpha Mu scoreless as they moved their offensive game into high gear. Although SAM intercepted several opposing passes, they went

down to a 26-0 defeat. Sigma Nu set up their first TD on two pass plays. Engle passed to Kirchner who in turn lateraled to Camp for a 20 yard gain. Kirchner then passed to Lemon to set the scene for Sigma Nu's first score. Engle passed to Melmeck after four minutes of play had elapsed for the six pointer.

In the second half Engle passed for a 25-yard TD to Bruce in the end zone. He also passed to Johnston for the extra point to make the score read 13-0. SN's third tally was a brilliant pass play from Whitey Miller to Lemon. Miller threw the 25-yard aerial, while running to his right, to Lemon who was deep in his own left end zone. Kirchner turned in a nice running stunt as he ran 20 yards up the middle and then passed to Melmeck in the last minute of the game.

Sigma Phi Sigma Wins

Dorm 43 and the Crusaders did not appear for their scheduled encounter and have consequently forfeited their right to compete in further IM football this season.

During the first half Sigma Phi Sigma—winner 13-0—and Phi Kappa Psi both showed a good defensive game. Phi Psi's rushing kept Sigma Phi pinned down. Sigma Phi's defensive pass system, however, equalized their poor offensive showing. Both teams seasawed back and forth with no score resulting in the first half.

With four minutes left to play Crest passed to Egans for the first score of the game. Crest then passed to Millard in the end zone to make the score read 7-0.

Egan intercepted Taba's pass in the closing seconds of the game and romped 20 yards for Sigma Phi's second quick score. The extra point attempt was no good giving Sigma Phi a 13-0 win over Phi Psi.

Sports Thru The Lion's Eye

By JAKE HIGHTON
Collegian Sports Editor



With Penn State's prominence-gaining football team engaged on important business in Morgantown, West Virginia, Beaver Field will not echo with the shouts of 20,000 throats for the first time in three straight Saturdays. The only sound likely to be heard in the Nittany Coliseum today is that of a soccer ball booming off the talented feet and heads of Penn State soccermen.

The Lion booters have the athletic premises all to themselves—without the distraction of a football game—as they hook up with a strong Maryland team. On the assumption that "you can't tell the players without a scorecard," let's take a look at some of Penn State's biggest kickers:

HUBIE KLEIN, outside left, Jr., 20, 5-10, 165, Benton—Big stick wielder for the Nittany baseballers last spring, Hubie has come along well in his first year on the soccer varsity . . . Biggest asset is furious drive, forceful play and power . . . A torn knee cartilage will keep him sidelined today.

DON SHIRK, inside left, Jr., 20, 5-9, 142, Thompsontown—Filling in fine for State's All-American Ron Coleman . . . Faster than Ron . . . Good passer and setter-up of plays . . . Improving all the time.

JACK PINEZICH, center forward, Soph., 19, 6-0, 180, New York City—All around ability . . . Poise, challenging player . . . Club's top scorer . . . Good judgment . . . Sprained back last year, but should be great this season . . . Made a flying start last week. His first of five goals against Bucknell was a beauty. With the ball between himself and the goalie, Jack deftly tapped it into the net rather than attempt a slam.

ELLIS KOCHER, inside right, Sr., 21, 5-9, 160, Espy—One of best passers on the team, quick with pass-offs . . . Knows what's coming up next . . . Booted important goal in 1-1 tie with Temple last year . . . Coach Bill Jeffrey says that although Ellis is a conservative player, he is extremely dependable.

BILL NORCIK, outside right, Jr., 19, 5-8, 135, Heidelberg—Speed main factor . . . Has developed into a good wingman . . . Gaining confidence, he kicked two into the net last week against Bucknell . . . Jeff thinks he still lacks overall field vision, the judgment of a football quarterback.

RALPH HOFMANN, left halfback, Jr., 20, 5-6, 140, Rockledge—Currently playing ahead of the more gifted veteran, Jack Charltan . . . Much potential which should come out with more experience . . . Jeff likes his energy and staying power.

CAPTAIN KURT KLAUS, center halfback, Sr., 21, 5-11, 165, Philadelphia—Most consistent player on the team . . . Ball hawk and tough man to get around passing or otherwise . . . Largely responsible for making the first line of defense the fullbacks, a dangerous offensive threat.

FRANK FOLLMER, right halfback, Sr., 21, 5-9, 160, Philadelphia—Falls in Coach Jeffrey's same category as Klaus, "hard to find two better performers than Kurt and Frank" . . . A hustler, always moving fast . . . National Soccer Coaches' All-American last year . . . Good ball handler along with speed, fight and endurance.

HAP IRVIN, left fullback, Jr., 22, 6-1, 170, Kennett Square—Ball control from forward wall days, helps him to visualize plays and set up well from his new position . . . Jeff says the switch finds Hap doing better job for the club and himself . . . Jeff much impressed with Hap's play at the new position . . . Hap went on the Iran trip two years ago as a frosh . . . Scored the goal that beat Maryland last year, 1-0.

PAUL DIERKS, right fullback, Soph., 19, 6-2, 185, Brooklyn—Cagey and smart, knows what to do with ball . . . Good kicker, this Brooklyn boy is no Bum when it comes to soccer savvy.

BOB HARRIS, goalie, Jr., 20, 5-11, 170, Bridgeville—The jovial Redhead is the team clown along with Hap . . . 2nd year varsity goalie doing a good job at this vital post . . . Good diagnoser of plays . . . Helpful to backfield calling out plays . . . Quick starter on feet . . . Usually in right spot at right time.

In ready reserve are: **JACK CHARLTAN**, right halfback, Sr., 24, 5-9, 165, Philadelphia . . . A three-year veteran from same Northeast H.S. as Kurt and Frank . . . Bothered by shin splints—all fall. **LYNN THOMANN**, left wing, Soph., 20, 5-7, 160, Centre Hall—Starting today in place of Klein . . . Good left foot, necessary at the left wing . . . **EMIL BORRA**, fullback, Jr., 19, 5-10, 145, Beadling—Jeff figures him to develop into a "good boy." **DEWEY KRUMRINE**, Goalie, Sr., 21, 6-4, 170, State College—Varsity baseball pitcher kept in reserve by Red Harris.

Pigskin Coin Flips . . .

Out on a Limb

After zooming to a first-place tie with Daily Collegian Sports Editor Jake Highton in last week's football predictions, the "red-warm guessing" Lion grid coaches will dispatch their ace representative, Joe Paterno, to try to overtake sportswriter Bob Schoellkopf's leading .727 percentage this week.

This will mark the second week of the coaches' sending one representative at a time to make the selections, instead of a vote of the entire staff.

In the game of the week, the Penn-Princeton contest, the selections are split with Paterno and Highton picking the Red and Blue and Schoellkopf and Assistant Sports Editor Ted Soens, taking the Tigers. Predictions are also split for the LSU-Kentucky tilt, Highton and Schoellkopf taking LSU and Paterno and Soens favoring the Wildcats. The predictions:

Games	Highton (.705)	Soens (.635)	Schoellkopf (.727)	Coaches (.705)
Penn-Princeton	Penn	Princeton	Princeton	Penn
Cornell-Syracuse	Syracuse	Syracuse	Syracuse	Syracuse
W. Forest-Villanova	Villanova	Villanova	Villanova	Villanova
Tulane-Ga. Tech	Ga. Tech	Ga. Tech	Ga. Tech	Ga. Tech
Maryland-Ga.	Maryland	Maryland	Georgia	Maryland
LSU-Kentucky	LSU	Kentucky	LSU	Kentucky
Wash.-Illinois	Illinois	Illinois	Illinois	Illinois
Tex.A&M-Mich. S.	Mich. St.	Mich. St.	Mich. St.	Mich. St.
Indiana-Mich.	Michigan	Michigan	Michigan	Michigan
Pitt-Notre Dame	N. Dame	N. Dame	N. Dame	N. Dame
Wis.-Ohio St.	Wisconsin	Wisconsin	Wisconsin	Wisconsin
Ark.-Baylor	Baylor	Baylor	Baylor	Baylor
Okla.-Texas	Okla.	Texas	Okla.	Okla.
Ore. St.-Stanford	Stanford	Stanford	Stanford	Stanford
Rice-UCLA	UCLA	UCLA	UCLA	UCLA

NEW College Diner

- Quality Food
- Prompt Service
- Reasonable Prices
- All Services

Counter
Cafeteria
Booths
Carry-outs
Between the movies

TO BE CHRIST-LIKE

expresses the highest desire of the Christian, and gives the pagan philosopher his noblest example.

"BEING LIKE CHRIST"

is the theme of the sermons to be preached at

THE PRESBYTERIAN CHURCH
STATE COLLEGE, PENNA.

SUNDAY MORNINGS AT 10:45

October 12, "Being Like Christ as One Who Serves"
October 19, "Being Like Christ in Suffering Wrong"
October 26, "Being Like Christ in Compassion"

Andrew E. Newcomer, Jr., Minister