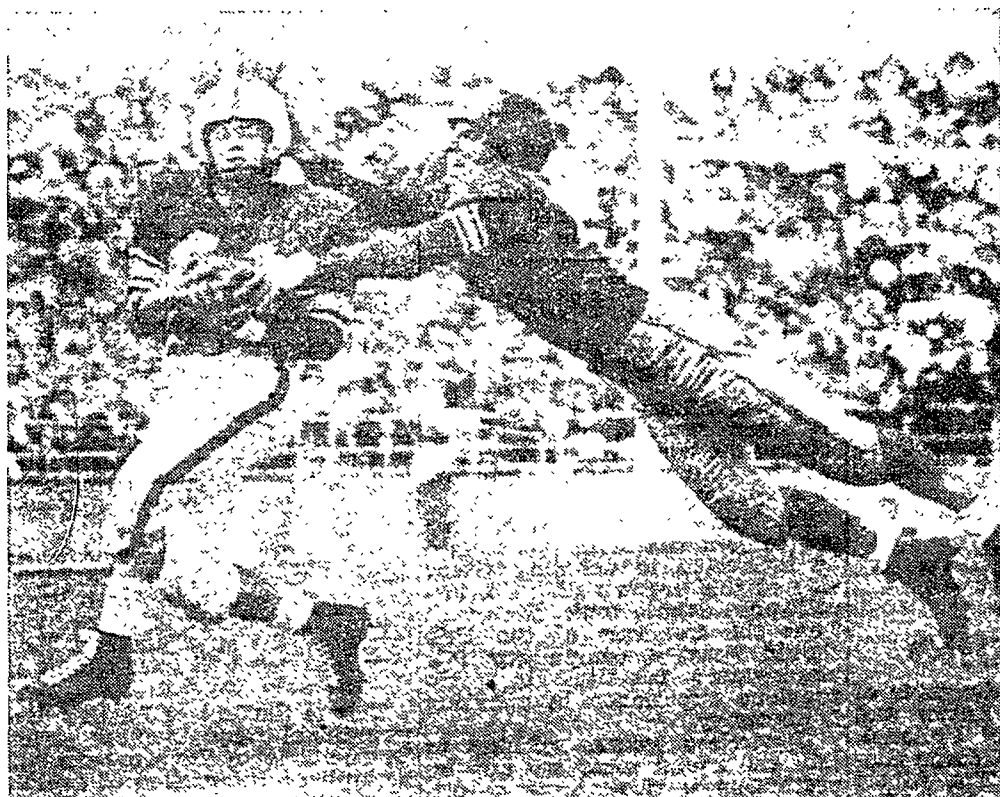
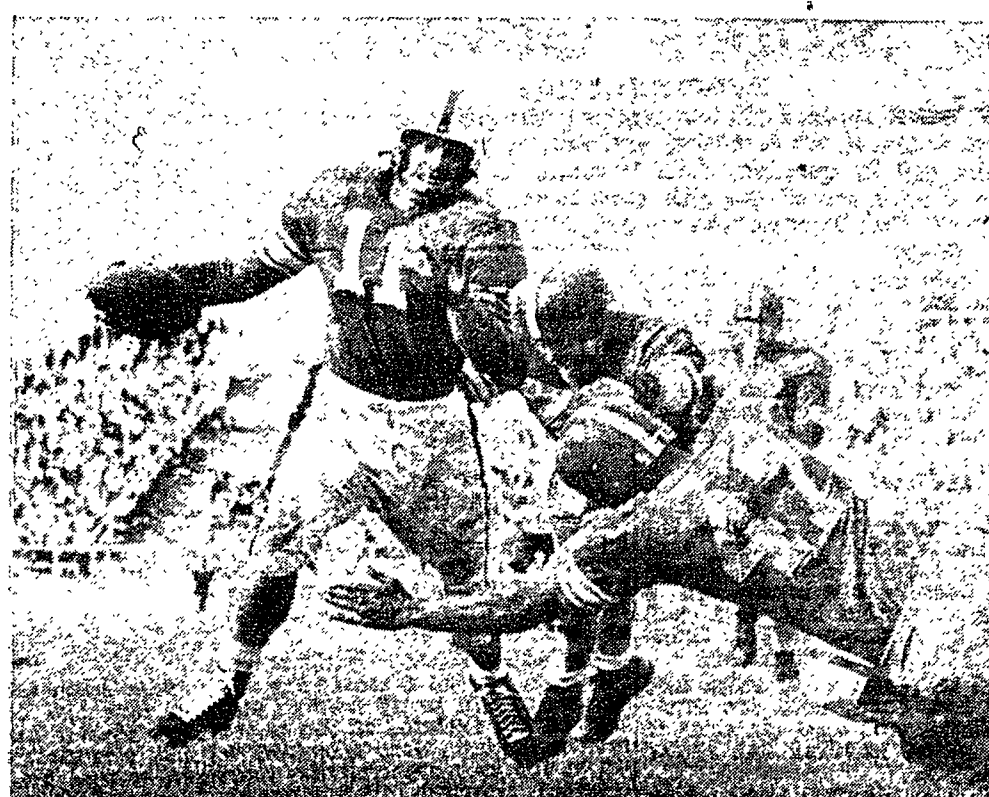


Action Shots Highlighting Saturday's Game



—Photo by Schroeder
DICK JONES, left, State's greased-lightning halfback, is shown plucking a "Rados Rocket" inside Temple's five yard line for the Lions' first TD in the closing stages of the second quarter. Duke Wuzzardo, Owl right halfback, no "wizzard" here, bit the dust in a vain effort to stop Jones. Lions won the Beaver Field opener.



—Photo by Schroeder
DON EYER, State's right half, picks up 10 yards and a first down in the 4th period before being stopped by two defensive men of Temple—Tex Robinson, left halfback, and Ed Charters, right half. Coming up fast to help in the tackle is Jim Cloney, defensive guard. State won, 20-13.

Lions Defeat Temple, 20-13

Gridders Bottle Up Owls Backfield But Show Lapses in Aerial Defense

By JAKE HIGHTON

Penn State effectively bottled up Temple's highly regarded backfield Saturday, but lapses on pass defense nearly caused the 66th Nittany football season to end in disaster.

Similar letups against Purdue, Samuels & Co. next Saturday might not find State getting off with a 20-13 victory as it did over the Owls Saturday on Beaver Field before a shirt-sleeved crowd of 14,000.

For Temple, as silent during the first half of the contest as it had been on Beaver Field during its last five appearances, suddenly caught fire in the third period and with two lightning aerial strikes took the play and a 7-0 lead away from State to go ahead 13-7—six more points than Temple had ever scored on the Nittany turf.

That the Lions were clearly the superior team was proved in the fourth quarter as Rip Engle's undaunted charges fought back to push across two touchdowns which snatched the Owls' momentary glimpse of their first Beaver Field triumph.

Offensively for State, it was a Tony Rados-Dick Jones passing combination which State parlayed into the first Nittany tallies of the season. Extra-point specialist Bill Leonard, who also showed he could run from his wingback position, added the points behind Jones' and Rados' TD's which would have given State a 14-13 victory.

However, not content with a "squeaker" victory, Lion quarterback Bob Szajna engineered the final scoring drive and plunged into paydirt himself with but 35 seconds left on the scoreboard clock.

Too obviously first-game-ragged, State fumbled and was stalled by penalties amounting to more than the length of the field before the game was over. Thus when Rados, surprisingly adept on a bad leg, sparked the team on a bad leg, sparked the team to the 3-yard line in the first period, a holding penalty halted the drive.

Wingback Don Eyer's good punting kept the Templars stuck deep in their own territory—once he kicked a beautiful coffin corner punt which rolled out on the 1½ yard line—and thus kept the Lions in striking distance. Strike they finally did, with less than five minutes remaining until the half.

With the big White line throwing the Temple backs backward, the Owls punted—almost blocked by backup Don Balthaser—to

Grid Box Score

PENN STATE	
LEFT ENDS—Yukica, Simon, Garrity.	
RIGHT ENDS—Arnelle, Malinak.	
LEFT TACKLES—Gratson, Sheetz.	
RIGHT TACKLES—Danser, Grier.	
LEFT GUARDS—Brown, Barney, Schoderbek.	
RIGHT GUARDS—Shank, Halderman, Green.	
CENTERS—Dooley, Balthaser, Smith.	
QUARTERBACKS—Szajna, Rados, Sherry.	
LEFT HALFBACKS—Jones, Bailey, Paul.	
RIGHT HALFBACKS—Leonard, Eyer, Vesting.	
FULLBACKS—Yanosich, Pollard.	
TEMPLE	
LEFT ENDS—Cooper, Daniels, Ciasullo, Stolte.	
RIGHT ENDS—McGee, Rothwell, Vuonavolta.	
LEFT TACKLES—Walters, Munro, Sarnese, Devicaris.	
RIGHT TACKLES—Lill, Sarnese.	
LEFT GUARDS—Ferrara, Clowry, Cardonick.	
RIGHT GUARDS—Edwards, Drobnik, Phillips.	
CENTERS—Parrota, French.	
QUARTERBACKS—McKernan, Piccone, Bronne, Braccia.	
LEFT HALFBACKS—Wuzzardo, Robinson, Hadley, Sarkos.	
RIGHT HALFBACKS—E. Charters, Lembach, Parri, Bandenzi, Kapp.	
FULLBACKS—Ramsey, Stout.	

STATISTICS	
Score by quarters:	
Temple	0 0 13 0-13
State	7 0 13-20
Temple scoring: Touchdowns: Joe McGee, 2. Points after touchdown: Dick Stolte, 1.	
Penn State scoring: Dick Jones, Tony Rados, Bob Szajna. Points after touchdown: Bill Leonard, 2.	
First downs	14 14
Rushing yardage	168 71
Passing yardage	103 112
Passes attempted	16 14
Passes completed	6 6
Passes intercepted by	2 3
Punts	8 6
Punting average	34 38
Ball lost, fumbles	0 1
Yards penalized	105 68

midfield where Don Bailey grabbed it for State and returned nicely to the Temple 32. Rados then dropped back and arched a strike into the arms of halfback Jones, who nabbed the ball right under the nose of Temple's ace back, Duke Wuzzardo. Stumbling, Jones tightroped the remaining four yards of sideline to the end zone. Leonard split the up-nights.

Temple Takes Lead
 After failing to cross the mid-

Sports Thru The Lion's Eye

By JAKE HIGHTON
 Collegian Sports Editor



Although the worth of the movie camera in the hands of Hollywood may still be a question for debate, there is no doubt whatsoever of the value of the movie camera in the hands of football coaches.

Football is a game unique in the respect that like few others, there is important action which goes unnoticed. If a fan watches a passer, he can't see the ends and backs deploying. If the fan concentrates on the ball toter, he often fails to see the blocks. Thus the magic camera. The football film can be studied easier than text, and is far more illuminating.

Film picks out every missed block, every evidence of loafing and by re-running enables every player to be watched through the completion of the play.

With the camera's second, third and even stop-look, it can be observed that Temple's first TD scored by end Joe McGee just within the bounds of the end zone was valid, as the officials called it. Movies showed McGee's one foot landing just inside the checkered zone while after initial contact, his other foot stepped out. More important than merely proving a ref right or wrong, the camera shows things which might go unnoticed during the course of the "first playing." For instance, it can show that a certain player hits the line like a battering ram—which everyone sees—but then the same player misses block after block—which few see.

Anyhow, after diligent study—stopping, starting, stopping—all day yesterday, the Nittany coaching staff found some "awfully good things." This in spite of the consensus of fan and writer that the Lions were "disappointing, not too deadly," en route to their 20-13 win over Temple.

Among the good things, Assistant Coach Tor Toretti claims State "played a good game," were these:

Several State individuals were outstanding. Assistant Coach Frank Patrick couldn't say enough in praise of offensive center Jim Dooley. Tackle Gene Danser, guard Don Shank and end Jesse Arnelle were commended by coaches for their offensive play. On defense, guard Don Barney received tremendous praise from the mighty as did halfback Don Bailey and safety Jack Sherry.

GOOD POINTS:
 Another obvious good point was the fine protection the line gave kicker Don Eyer and passers Tony Rados and Bob Szajna. . . . There were flashes of the Big White line. . . . Before the game was two minutes old tackle De Vicaris and QB Paul McKernan left the field under another's power. Others were shaken up often, so there must have been some hard hitting. . . . Temple's topflight backs were held to a net yards rushing of 71. . . . Temple, as Rip Engle points out, was better than most people rated them. . . . State played the entire game using only five plays. Can you blame them with Purdue scouts hovering like vultures?

BAD POINTS:
 First game jitteriness and ragged play hurt. Offside and back-in-motion penalties occurred more than they will even a week hence. . . . Pass defense, often tough by Bailey and Sherry, had two bad letups which a thrower like Samuels and a receiver like Flowers will capitalize on better than a Piccone and a McGee. A press box wag said it was a long season—which it almost was. But it isn't nearly over. State still rates a good chance of upsetting Purdue. Despite the fact that the victory didn't merit the frosh's tearing down Bill Leonard's targets, the performance was hardly shameful—no fourth quarter rally ever is.

IM Entry Deadline
 All intramural touch football and tennis singles entries must be turned in at the IM office, 213 Rec Hall, before 4:30 p.m. tomorrow in order to be included in this season's scheduling.
 The entry fee for the football tournament is \$1 per team. The tennis entry fee is 25 cents per man.

Sports Briefs

Rocky Favored
 PHILADELPHIA (AP) — Young Rocky Marciano rules a 3 to 2 choice to wrench the world heavyweight title from 38-year-old Jersey Joe Walcott tomorrow night in the same Municipal Stadium where Gene Tunney upset Jack Dempsey just 26 years ago.
 Co-promoters Jim Norris and Herman Taylor expect a crowd of 50,000 and a gate between \$550,000 and \$600,000 for the biggest heavyweight promotion since the Joe Louis-Walcott return.

Women in Golf
 PEBBLE BEACH, Calif. (AP)—Women golf professionals have been offered a chance to show up rivals in the men's ranks.
 Frank Chester, tournament director of the \$7,500 Northern California-Reno Open at Reno, Oct. 1 through 12, today invited members of the Women's Professional Golf Association to compete against the men on equal terms during the Reno play.

Musical, Fain Lead
 NEW YORK, (AP) — Stan Musical and Ferris Fain, the major league batting leaders during most of the 1952 season, are being hard pressed to hold their slight advantages as the campaign enters its final week.