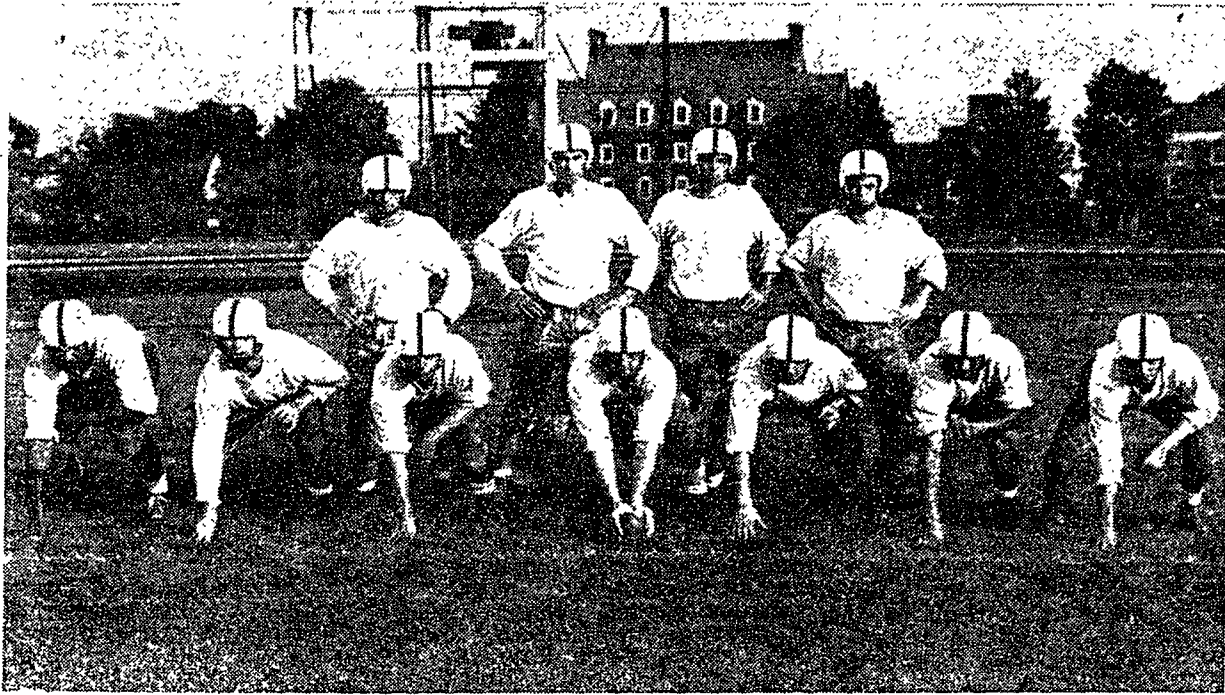


## State's Offensive First Team



STATE'S OFFENSIVE UNIT which will open the season against Temple today is pictured above. Along the forward wall, from left to right are: right end Jesse Arnelle, right tackle Gene Danser, right guard Don Shank, center

Jim Dooley, left guard Cy Brown, left tackle Joe Gratson and left end Joe Yukica. The backs from left to right are: fullback Matt Yanosich, quarterback Bob Szajna, wingback Bill Leonard and left half Dick Jones.

# Lions Meet Owls—

(Continued from page one)

Leading the Temple, diversified attack which will include the straight T, possibly the double wingback and perhaps even the split T, are two fine quarterbacks and passers, Paul McKernan and Chet Bromke.

Along the line, the Owls appear somewhat thin but two tackles in co-captains Dave Lill and Pat Sarnese should be quite conspicuous. Offensive platoon leader, Lill, at 215 pounds, is the heaviest man on the squad. Sarnese ought to be one of Temple's main defensive bulwarks attempting to stop State's Winged-T offense since Kawal considers him one of the best in the East.

Elsewhere along the line for the Philadelphians, the guard slots appear extra weak with only one half-way veteran, Johnny Edwards.

Three Nittanians are likely to do two-platoon duty. Jesse Arnelle will lend his 6-5 stature at offensive and bolster the defense with his 220 pounds. Co-Captain Joe Gratson, in addition to playing his new role of offensive guard, will double in his favorite back-erup spot. Offensive center Jim Dooley also may double as a line-backer on defense.

State's kicking situation is pretty much in doubt except for placekicking specialist Leonard. Kickoffs will probably be booted by number two quarterback behind Bob Szajna, Don Bailey. The punting on an obvious fourth down situation may be done by Gratson but backfielders' booting will fall to Pollard, Szajna or wingback Don Eyer.

Although not starting offensively or defensively, guard Pete Schoderbek, end Jim Garrity, Eyer, halfbacks Tony Frey and Keith Vesling and tackle Al Bowden will see plenty of action.

## Starting Lineups

PENN STATE		TEMPLE
Joe Yukica	LE	Gary Cooper
Joe Gratson	LT	Tom Walters
Cy Brown	LG	Nick Droboniku
Jim Dooley	C	Mike Parrotta
Don Shank	RG	Johnny Edwards
Gene Danser	RT	Dave Lill
Jesse Arnelle	RE	Joe McGee
Bob Szajna	QB	Paul McKernan
Dick Jones	LHB	Duke Wuzzardo
Bill Leonard	RHB	Ed Charters
Matt Yanosich	FB	Jack Ramsey

Penn State defensive starters: ends, Dave Simon and Don Malinak; tackles, Stew Scheetz and Rosey Grier; guards, Don Barney and Gratson; backerups, Bob Smith and Dooley; halfbacks, Leonard and Don Bailey; safety, Jack Sherry. Reserves: ends, Jim Garrity, Ken Newman, Ralph Wagner, Bob Rohland; tackles, Jim Eshach, Paul Shattuck, Carl Pffirman, Danny DeFalco, Al Bowden, Bill Biever, Herb Raifsnider; guards, Sam Green, Dubs Haldeman, Dan Van Sickel, Bob Waters, Ken Kurkiaka, Pete Schoderbek; centers, Don Balthaser, Larry Lancaster; halfbacks, Tony Frey, Norm Hickey; fullbacks, Bob Pollard, Pete Shopa, and Ron Younker; quarterbacks, John Dubinsky, Tony Rados, Norm Paul, Bill Patterson; wingbacks, Keith Vesling, Don Eyer, John Milsom.

## Lions Edged Owls; 7-0, in 1947

By JOHN SHEPPARD

The grayish altostratus clouds covering the whole sky gave it a dull, leaden appearance. The all-night rain had just ended an hour before the game, but the damage was already done.

The field—Temple Stadium—was a quagmire by the opening whistle. Both teams—Temple and Penn State—floundered around in the sea of mud and by the time the game was a few minutes old, the radio sports announcers were having a difficult time distinguishing one player from the other.

### Slosburg Fizzles

After successfully clawing their way past Washington State, Bucknell, Fordham, Syracuse, West Virginia, and Colgate, the Nittany Lions of '47 just had to win this one. Everything depended upon this one—if they were to get a bid for the Cotton Bowl tilt.

A quarter and a half had gone by and neither team had made any advances. Sonny Slosburg, the supposedly one-man Owl edi-

tor, fizzled out when it came to ground gaining and passing—his reputed long suits. Up to that time Sonny was held to a minus 12 yards, while the ex-Central High star's passing attack failed to materialize.

In the main, this was an overland battle. Successfully forward passing was virtually non-existent all afternoon. Temple's only concerted drive of any length occurred early in the second period. Joe Lee reeled off a sizable gain.

### Rogel Plunges

The ball has been snapped back to the backfield where a back took the ball and squatted with it between his legs. Another back faked taking the ball and pulled the Lions over to the left side of the line. Then on an end around play, left end Lee raced around right end and was headed for pay dirt, when all of a sudden, from nowhere, Co-captain Johnny Potoklan came up rapidly on Lee and finally pulled him down on the State 15—a gain of some 45 yards.

Early in the third period, Fran-

nie Rogel and Bobby Williams concentrated on short stabs at the Temple forward wall.

First, Rogel would bull his way through for two, and then Bobby would match his teammate's feat by slicing off tackle for four or five.

The Penn State line, whom they were calling "The Seven Mountains," began to surge ahead. Temple's line was unable to withstand the knife-like plunges of the powerful Rogel. The ball now was rested on the Owls two yard stripe.

### Williams Scores

It was third down and goal to go. Out of the huddle the mud-clad athletes came. Sixteen plays before they were 49 yards away. This was the opportunity they had been waiting for all afternoon.

The ball was snapped back to Williams who put his head down and plowed his way over for the Lion's first six points of the day. The extra point was good and Coach Bob Higgins' boys led, 7-0, while the stands, particularly the State rooters, set up a terrific furor.

Sports Thru

## The Lion's Eye

By JAKE HIGHTON  
Collegian Sports Editor



It's here at last! A brand new 1952 football season. And it is about time. Assorted and sundry "experts" have rated the Lions anywhere from tops, to 10th power in the East. And although the meeting with Temple this afternoon cannot possibly designate the Nittanians to any particular ranking niche, it will answer a lot of questions.

Prior to the time this afternoon when the game goes into the record books as either State's 9th or Temple's 4th win in the series, only one concrete thing has leaked out about the Lions. That leak was an insignificant appearing statement by Cornell's Coach Lefty James following the Big Red-Nittany scrimmage game last Saturday. To wit, "our defensive platoon is way ahead of the offense." For what it is worth, State defeated both Cornell's offense and defense.

As to the Templars, it's almost a goal-post-tearing "victory" when they score a touchdown on Beaver Field. The Owls haven't won in State's own balliwick in five attempts and during the same period own a rousing 1.4 points per game average—low even for a Pitt-Penn State basketball game. The only time the Owls showed any inconsistency was in 1950 when they held State to a 7-7 draw, to hang up their only figure other than a big 0.

However, a look at Temple's backfield this year shows there is plenty of potential to up the Owls' anemic Beaver Field scoring average. A half dozen backs bear a resemblance to TD's. Soph Tex Robinson, a speedy change of pacer has received nothing but rave notices after his frosh play with the varsity. Duke Wuzzardo is another open-field scamperer who after two excellent varsity years is figured to have his best by far this season. Halfback Eddie Charters, described by Templars as "sneaky" fast, showed he could go the whole distance, from way out, twice against Boston U. last year. Fullback Jack Ramsey is a hard smasher with two years of experience. Topping off what looks to be a stellar backfield, the Owls have two quarterbacks to direct their offensive T thrusts—Paul McKernan and Chet Bromke.

Glancing from the Temple backs to the comparatively weaker line, still "on paper," one is reminded of a once upon a time:

During the Golden Twenties of sport, so the story goes, Notre Dame Coach Knute Rockne started a game with his fabulous Four Horsemen but left the Seven Mules sitting on the bench. By the end of the first quarter, Miller, Layden, Crowley and Stuhldreher were screaming murderously for their first team line.

On a pure guess, it's very possible that Temple Coach Al Kawal will be screaming, "A line, a line, my kingdom for a line," simply because it isn't likely that Kawal has Seven Mules to match his brilliant backfield talent.

An interesting sidelight may develop out of today's game should Temple swing from its orthodox T formation to the Split T, probably not seen before on Beaver Field. The Split T, with its spaced linemen, and spread backs is the offensive vogue today along with the pass happy Southwest Conference's spread formation. Just as the spread needs a topflight tailback, so the split T almost requires a Waterfield or Lujack to quarterback. It's for the latter reason that the Owls may not even use the split today. Neither Bromke or McKernan have the speed or class to operate the QB optionals—dive over tackle, slant off tackle or the halfback pitchouts.

With today being opening day at the football races, one cannot help but hark back to last year's opener—a game not likely to be matched for Beaver Field thrills in a long while... The parade of touchdowns which came in such rapid order that you didn't dare to light a cigarette... the professional football magic of quarterback Harry Agganis sidestepping would-be tacklers forty yards behind the line of scrimmage... And the 40-34 pro football final score, except for the missed extra points.

### Pigskin Coin Flips...

## Out on a Limb

The Penn State Football Coaches Inc. (dedicated to winning football polls) took time out yesterday from preparing for today's State-Temple grid clash to compete with the Daily Collegian sports staff in the delicate matter of predicting decisions. Fifteen of the day's top football games to be played across the nation this afternoon have been chosen.

The writers, Sports Editor Jake Highton, Ted Soens, and Bob Schoelkopf, will compete among each other as well as the six football coaches taken as a unit. Head Coach Rip Engle, Tor Torretti, Jim O'Hara, Joe Paterno, Al Michaels, and Earl Bruce comprise the coaching staff.

Of the 15 grid contests under consideration, there are seven disagreements. In the "game of the day," Washington State at Southern California, Highton favors the Cougars, while the other contestants pick the Trojans.

Teams	Highton	Soens	Schoelkopf	Coaches
Ark.-Okla. A&M	Arkansas	Arkansas	Arkansas	Arkansas
Wash. & Lee-Duke	Duke	Duke	Duke	Duke
Ga.-Vanderbilt	Vand'bilt	Georgia	Georgia	Georgia
Idaho-Wash.	Wash.	Idaho	Wash.	Wash.
TCU-Kansas	TCU	TCU	TCU	(tie)
Villanova-Ky.	Kentucky	Kentucky	Kentucky	Kentucky
Texas-LSU	Texas	Texas	Texas	LSU
Md.-Missouri	Maryland	Maryland	Maryland	Maryland
VMI-W&M	W & M	VMI	W & M	VMI
S. Dakota-Nebr.	Nebr.	Nebr.	Nebr.	Nebr.
Ore. State-Utah	Ore. S.	Ore. S.	Ore. S.	Ore. S.
Wash. S.-S. Cal.	Wash. S.	S. Cal.	S. Cal.	S. Cal.
Wake For.-Baylor	Baylor	W. Forest	Baylor	Baylor
Oregon-UCLA	UCLA	UCLA	UCLA	UCLA
Santa Clara-Stan.	Stanford	Stanford	Stanford	Stanford