

# Maple Room Offers Lunchtime Specials

By HELEN LUYBEN

Pork chops, green peas, parsley potatoes, Waldorf salad, poppy-seed rolls, butter, strawberry parfait, and coffee. Sound good to you? It's just a sample of the meal you might be served in the Maple Room, the Home Economics school's cafeteria and tea room.

Not everybody knows about this student-operated eating place in the basement of the Home Economics building. But it's been there for a long time—so long that Miss Alma McDougall, assistant professor of hotel and institution administration, can't remember when it started.

It's called the Maple Room because of its furniture, although students have suggested it be renamed "Club 410" to give it a jazzier tone, according to Miss McDougall.

410 is the number of the tea room management course in which students operate the Maple Room Tuesday through Thursday nights.

Another institutional administration course, 330 (quantity cooking), sends its students to operate the Maple Room as a cafeteria at noon, Monday through Friday, and Monday night.

"We have about 90 to 100 customers for cafeteria lunch, and 40 to 60 for dinner," Miss McDougall reported. "Most of the customers are secretaries, faculty, and graduate students."

Students, many of whom are men in hotel administration, play menus and food lists, prepare food, and wash those dishes they use in the preparation.

Each noon a customer has a choice of two main dishes (meat or a meat substitute), two or three vegetables, three salads, rolls, four desserts, and five beverages. For dinner the Maple Room plans three menus, and with these go a choice of two or three vegetables, two salads, rolls, three desserts, and three beverages.

One student is manager each day. He plans a work schedule for the other students in his class. He keeps account of all the expenses for food and figures this percentage-wise with the money the tea room takes in. The object, as in any such business, is to take in more money than you spend. Miss McDougall reports much competition on this score.

## Panhel to Meet

Panhellenic Council will meet at 6:30 tonight in the Kappa Alpha Theta suite.

# Scott Named Westminster Moderator

Winfield Scott was elected moderator of the Westminster Foundation for the fall semester Sunday night, Clyde Herrick, outgoing moderator, announced.

Marjory Maxwell was elected vice-moderator; Rachael Withrow, secretary; and Edward McConnell, treasurer. McConnell will serve as treasurer the complete term instead of a semester as do the other executive officers.

Four commissions function in the organization. Each have two co-chairmen, one who is elected for a semester and the other who is retained from the previous semester.

Anna Harrison was elected co-chairman of the faith and life commission; Donald Mitchell, stewardship commission; Nancy Morris, fellowship commission; and Justine Miller, outreach commission. Chairmen of the commissions to hold office from this semester include Ann Allison, faith and life; Kay Edwards, stewardship; Gene Phlegar, fellowship; and Bruce Wagner, outreach.

A freshman man and woman will be appointed next fall to represent their class. Two upper-class members at large will be appointed to represent outside idea groups, Herrick said.

## Two Senior Groups Visit Rural Schools

Two groups of seniors, one accompanied by Dr. James H. Moyer, associate professor of education, and the other accompanied by Dr. Donald McGeary, associate professor of education, recently visited the Centre Hall-Potter High School and the Tusseyville, Tusseyville, and Potter's Mills schools.

The object of the visits was to show the multiplicity of duties a teacher in a small or rural school is asked to perform in addition to formal instruction.

# Sigma Chi Sweetheart



EDITH SPALDING, a sophomore in education, from Lancaster, was named Sigma Chi Sweetheart of 1952 at a dinner dance at the chapter house Saturday. She was presented with an engraved cup and a white cross of roses by Ray Reed, president of the fraternity, who is pictured with her. Miss Spalding's escort was David Heckel.

## Methodist Club Initiates 11 Women

Kappa Phi, Methodist girls club, initiated 11 new members Sunday. Initiated were Carolyn Ball, Jeannine Vandeuere, Ora Dieffenderfer, Wilma King, Emily Jackson, Jane LaCoe, Janet Hiles, Sally Wennett, Arlene Blöse, Ravenna Raymond, and Jacqueline Wilson.

Following the initiation, new officers were installed. They are Marjorie Shaffer, president; Joanne Church, vice president; Marda Shinton, corresponding secretary; Catherine Park, recording secretary; Barbara Harford, treasurer; Jane Montgomery, chaplain; and Gloria Beppler, program chairman.

## Co-Edits

### Sigma Delta Tau

Sigma Delta Tau recently held an open house in the suite for parents and friends. A tea was held on Mother's Day.

Recently initiated into the sorority are Sandra Wasserman, Sylvia Davis, Sandra Rosen, Marlene Garson, Karen Gold, and Myrna Siegel.

### Theta Phi Alpha

Recently pledged to Theta Phi Alpha are Dolores McHugh, Mary Louise Schutz, and Frances Rodgers. After pledging a pajama party was held in the suite.

Active members and pledges honored their mothers at a breakfast in the suite on Mother's Day.

Theta Phi Alpha will hold a public card party in the basement of Our Lady of Victory Catholic Church at 8 p.m. Friday.

### Alpha Phi Alpha

New officers of Alpha Phi Alpha are Robert Pollard, president; Seth Brown, vice president; William Jackson, secretary.

### Engineering Honorary

James Smithgall was recently elected president of Sigma Tau, national engineering honorary.

Max Schuster was elected vice president; Elvin Mix, recording secretary; Richard Sneeringer, corresponding secretary; Alan Sredenschek, treasurer; John Gaul, historian; and Robert Swab, student council representative.

See this money-saving gift idea!

**SPECIAL VALUE**

## Princess Gardner Billfold Set

Famous Registrar

Plus Matching Key Card

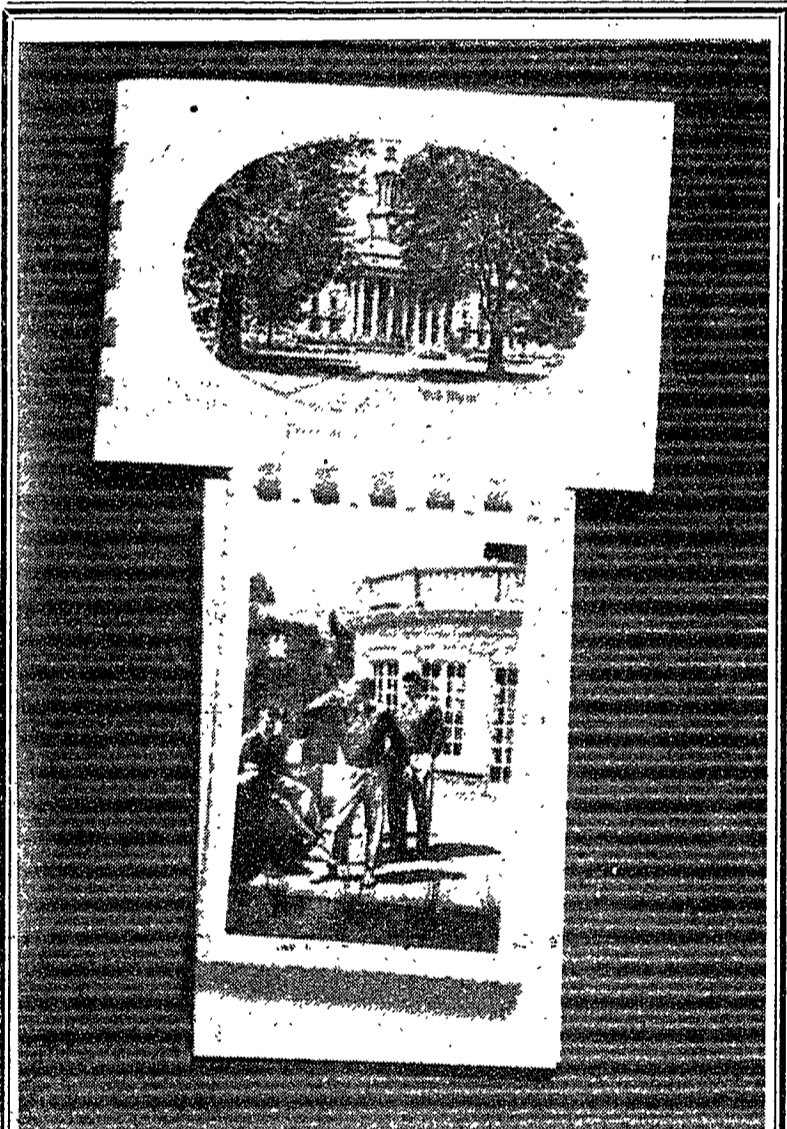


Usually \$6.75

Now Both for \$5.00 Plus Tax

For that June graduate—an invisible stitched billfold that can't pull apart. The Registrar in fine saddle cowhide PLUS matching Key Card. On special just in time for graduation.

**CRABTREES**



## SOUVENIR ALBUM

- with every roll of film developed and printed
- with reprints
- at no extra charge
- 24 hour service
- Come in today

**CENTRE COUNTY FILM LAB**

122 W. BEAVER AVE.

Today **WARNER** theatres  
**Cathouse**  
MARK STEVENS  
ANGELA LANSBURY  
PATRIC KNOWLES  
"MUTINY"

**State**  
LARRY PARKS  
ELIZABETH TAYLOR  
"LOVE IS BETTER THAN EVER"

**Nittany**  
OPEN AT 6:00  
ROBERT TAYLOR  
"MAGNIFICENT OBSESSION"