

## Discussing TV Problems

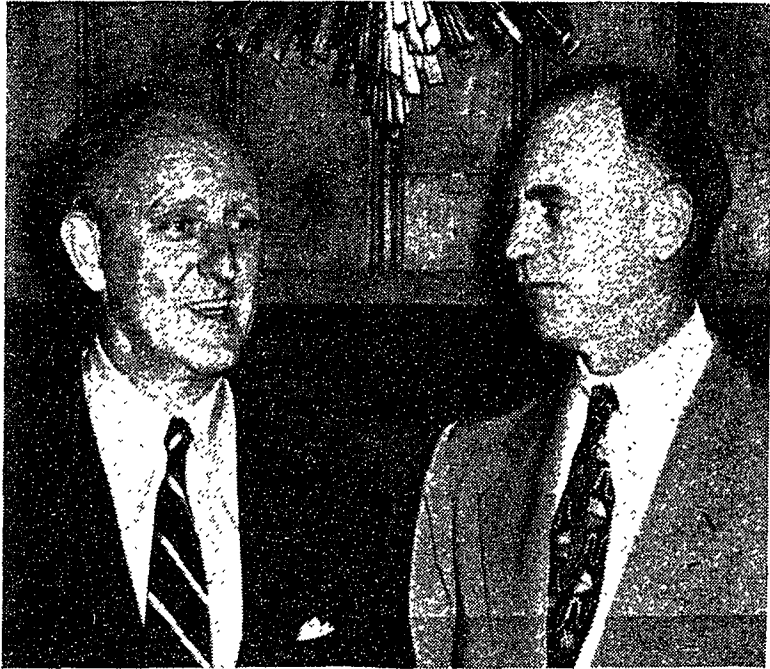


Photo by Schroeder  
KAY KYSER (left), former bandleader, and Gordon Gray, president of the University of North Carolina, talk over television at the Nittany Lion Inn yesterday. They were here for the Educational Television Program Institute which closed yesterday.

## TV Institute Discusses Production Costs, FCC

Production costs, Federal Communications Commission rules, organization of noncommercial television station staffs, and the equipment needed were discussed yesterday at the Educational Television Program Institute, according to Dr. Carroll Newson, general chairman of the institute.

Yesterday's discussion was carried out in small groups of 20 to 25 persons. These discussions were held to hear proposals which could be indorsed for the facilitation of development of educational television.

Today's session, Newson said, would be occupied with drawing up proposals to be recommended for the development of educational television.

One of the many suggestions that were made yesterday, Newson said, was one which listed industry as a possible source of financial support for the production of television programs that would carry education to the general public.

Today's session is the last one scheduled for the present institute.

### Poll --

(Continued from page two)  
State delegation is headed by Klisanin.

A political platform for the candidate will also be drawn up by the more than 500 delegates from 75 colleges and universities throughout the state.

#### Foreign Affairs Plank

The Penn-State-suggested plank of the natural resources committee will be presented by Edward Gildea. It favors the development of programs similar to TVA in the Missouri and Columbia River valleys, and a treaty for construction of a St. Lawrence Seaway. James Hand, of the local club, will be chairman of the natural resources committee of the convention.

A plank to be presented by Penn State's foreign affairs committee of ICG advocates the use of means to relieve East-West tensions; the support of the UN; fulfillment of the North Atlantic Treaty Organization obligations; and a policy of containment in Korea. Committee co-chairmen are Ralph T. Johnson and George Stennett.

The civil rights plank, prepared by a committee headed by Thomas Unholtz, advocates efforts to eradicate racial, religious, and economic discrimination; to reestablish the Fair Employment Practices Commission; and to abolish the poll tax as a voting requirement.

The labor plank includes plans in favor of revising the Taft-Hartley Act, and securing equality between labor and management. Thomas Pyle is chairman of the labor committee.

The military affairs plank opposes both UMT and the extension of the GI Bill of Rights to forces now in Korea. Military committee head is John Barth.

White flowers usually have a stronger odor than any other color flowers.

## Elections --

(Continued from page one)  
ten-minute intervals between classes today.

The heaviest voting took place between 1:30 and 5-p.m., Chapman said, with the intervals between classes being the busiest. By 1:30 p.m., only 812 votes had been cast, with over 1400 ballots cast in the last three and a half hours of the voting day.

State Party candidates in the All-College race are John Laubach, president; James Plyler, vice president; and William Griffith, secretary treasurer. Senior class State candidates are Theodore Kimmel, president; William O'Malley, vice president; and Margaret Hepler, secretary treasurer. Running for junior class offices are Richard Lemyre, president; Gail Shaver, vice president; and Ann Quigley, secretary treasurer.

Contestants in the All-College race for the Lion Party are Joseph Arnold, president; JoAn Lee, vice president; and Richard Rostmeyer, secretary treasurer. Lion candidates for senior class offices are Franklin Kelly, president; Joseph Haines, vice president; and Peggy Mayberry, secretary treasurer. Running in the junior class race are Theodore Edmunds, president; Robert Carruthers, vice president; and Peggy Crooks, secretary treasurer.

All male students are eligible to vote for the president and secretary treasurer of the Athletic Association. Runner-up in the presidential race will be named vice president. Robert Kenyon, Joseph Lemyre, William Leonard, Samuel Marino, and Herman Sledzik are the contestants in the AA presidential battle. Running for secretary treasurer are Robert Bowers, Donald Frey, James Herb, and Kurt Klaus.

## Transmitter --

(Continued from page two)  
the FM signal into AM so that greater coverage of the students would be available.

Other members of the committee are Eric Walker, dean of the School of Engineering; David R. Mackey, assistant professor of speech; Walter Wiegand, director of the physical plant; John Price, representative of the Radio Guild; and Milton Bernstein, representative of the cabinet radio committee.

tative of the cabinet radio committee. All-College Cabinet has gone on record as favoring the proposed FM-slave transmitter radio system with the condition that the College committee include a qualified engineer who can provide the group with technical data and information with regard to costs.

Final approval on any radio system for the campus rests with President Milton S. Eisenhower.

## CLASSIFIEDS

### LOST

IDENTIFICATION BRACELET. Name inscribed—Mildred Hoffman. If found, please notify Larry, 6061, ext. 281.

WALLET Friday night, McElwain lobby. Send no money—just cards. Ralph Clark, Phi Sigma Kappa.

GREY GABARDINE top coat at Sigma Chi Thespian party, April 4th. Smith Brothers tag. Contact Chuck Nagney, 2760.

LADIES' ELGIN Deluxe Gold Wristwatch, cord band. April 7, in West Dorm area. Call Joan Arehart 1083.

RENEE' TRAVELING Clock. Blue leather case. Name and address stamped inside. April 7, in West Dorm area. Call Joan Arehart 1083.

NOTEBOOK OUTSIDE of McElwain; notes invaluable, urgently needed; liberal reward! Call Lou, dial 7222.

PERSON WHO found white sport sweater outside room 219 E.E. Bldg. Friday afternoon, call Wesley Haer 4619.

### FOR SALE

4x5 PACEMAKER Speed Graphic outfit, \$225; Dejur 4x5 enlarger, \$100. Both \$300. For details, call Ellis, 6061-298.

MODEL-A FORD 1931 COUPE, excellent motor; real asset on and off campus. Call 3335 after 7:30 p.m.

TWO RESERVED seats for Saturday afternoon, Olympic tryouts. Call evenings. Nyle Hershberger, Woodsdale Trailer Park, 6595.

PICNIC LUNCHESES to take out for groups of 25 or over. Phone 2877.

### FOR SALE

REMAINDER OF household goods. Leaving town Friday. Must sell. Call 6821.

### WANTED

MATURE YOUNG men for positions as counsellors in fine Maine camp. Write: Maury Schreiber, 2609 Fairview Ave., Baltimore 15, Md.

RISE FOR 2 to New York or vicinity on 25th around 11 a.m. Call Kay, 151 Atherton.

### FOUND

BROWN JACKET with brown fur collar. Left in green Chev. truck during forest fire. Student may claim at Student Union by paying for ad.

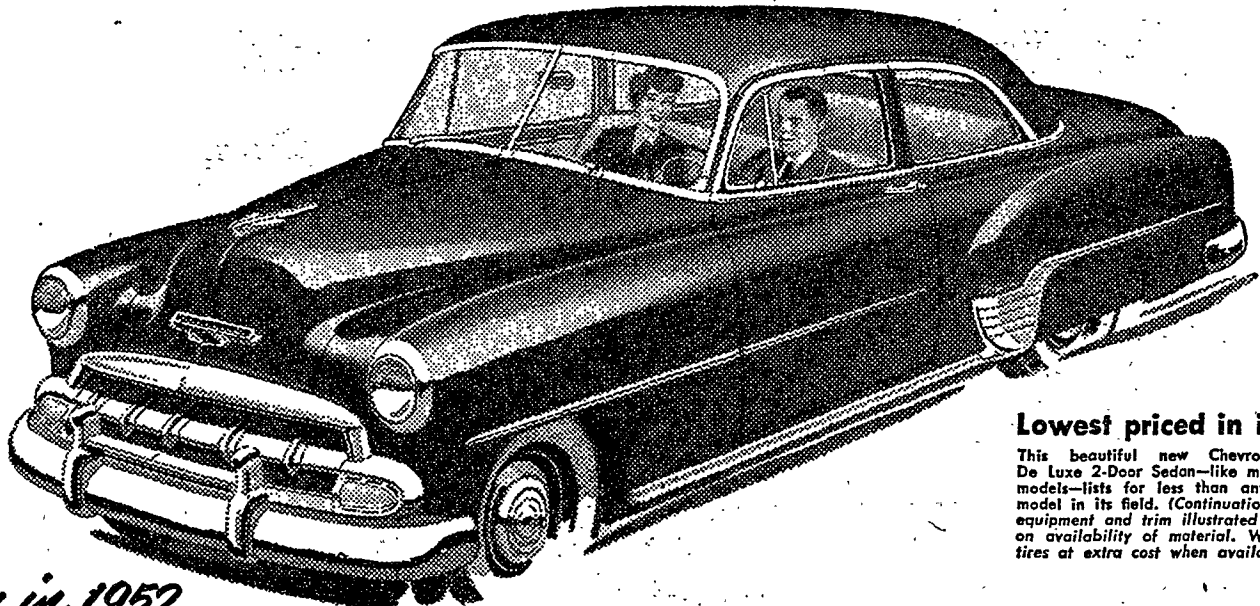
### MISCELLANEOUS

IF YOUR typewriter needs repairs, just call 2492 or bring machine to 633 W. College Ave. Mr. Beattie's 28 years experience is at your service.

FRENCH and SPANISH students: will tutor in grammar for reasonable rates. Call 6061-150 Simmons.

TYPING and MIMOGRAPHING—Secretarial Service—Room 207, Hotel State College. Phone 4906.

TENNIS FANS—it's Hassinger for racket stringing the no-awl way. Prompt service, guaranteed work, longer life to string and racket. R. T. Hassinger. Daily—White Hall, after 5 p.m. 514 E. Beaver Avenue.

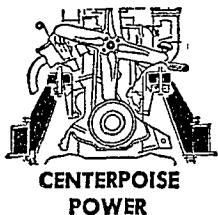


Lowest priced in its field!

This beautiful new Chevrolet Styleline De Luxe 2-Door Sedan—like many Chevrolet models—lists for less than any comparable model in its field. (Continuation of standard equipment and trim illustrated is dependent on availability of material. White sidewall tires at extra cost when available.)

# Again in 1952... lowest-priced line in its field!

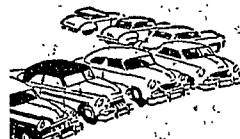
Yes, Chevrolet brings you lowest prices on model after model... as well as all these fine features found in no other low-priced car!



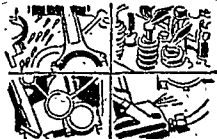
CENTERPOISE POWER



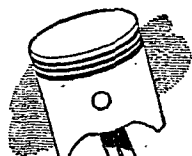
LARGEST BRAKES



WIDEST COLOR CHOICE



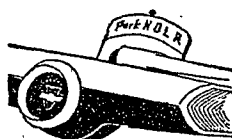
4-WAY ENGINE LUBRICATION



CAST IRON ALLOY PISTONS



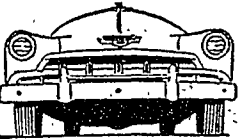
SAFETY PLATE GLASS ALL AROUND



POWERGLIDE AUTOMATIC TRANSMISSION\*



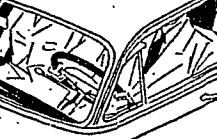
UNITIZED KNEE-ACTION RIDE



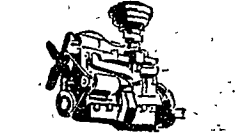
WIDEST TREAD



BODY BY FISHER



E-Z-EYE PLATE GLASS



MOST POWERFUL VALVE-IN-HEAD ENGINE

\*Optional on De Luxe models at extra cost.

MORE PEOPLE BUY CHEVROLETS THAN ANY OTHER CARS



The Only Fine Cars PRICED SO LOW!

SEE YOUR CHEVROLET DEALER FOR ALL YOUR AUTOMOTIVE NEEDS!

Conveniently listed under "Automobiles" in your local classified telephone directory