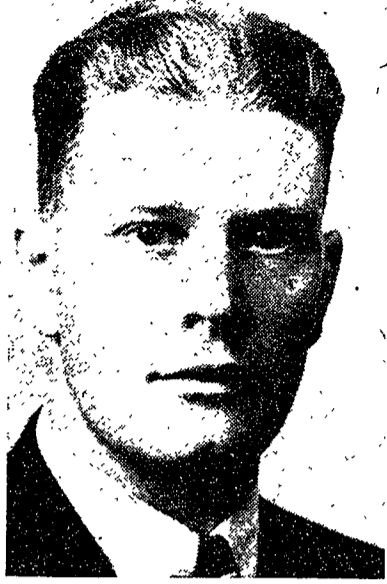


Accepts New Job



Richard E. Pride

State-China Official Gets Hort Post

Richard E. Pride, Penn State-China representative, has been named to a post with the horticultural extension service of the University of Massachusetts.

Pride is the successor to G. Weidman "Daddy" Groff as the American representative on the faculty of Lingnan University, Canton, China.

Pride has been on leave granted by the American Board of Trustees of Lingnan University, since 1949 when he left Lingnan as the communist troops spread throughout China. He and "Daddy" Groff have been working in Florida on an international plant exchange program.

Pride and his family are expected to arrive in State College this week en route to his new position.

Pride, who comes from Potter County, was graduated from the College, when he received his master of science degree. He and his wife sailed for China in July 1947 to continue the horticulture work that Groff started in 1911. Groff, also a graduate of the College, was forced to leave China during World War II when the Japanese forces seized Lingnan University.

Spanish Club to Meet

El Circulo Espanol, Spanish Club, will hold its regular meeting at 7 tonight in the Home Economics living center.

About 95 per cent of all rivers in North America flow south. The St. John's River in Florida is the only important river in the U.S. whose course is in a northerly direction.

Parking Plan --

(Continued from page one) problem for some months. Members of Wiegand's committee are Lyman E. Jackson, dean of the School of Agriculture; David Mutchler, Tribunal chairman; Calvin G. Reen, professor of civil engineering; and T. C. Kavanagh, of the Faculty Advisory Council traffic committee.

"The committee recognizes that special cases will have to be worked out," Wiegand said, "and that the plan will not be perfect at first. As soon as the plan goes into effect traffic and parking counts will be taken as a basis for determining changes necessary in the plan."

Physically handicapped students and staff members will be among special cases, he said.

As additional parking spaces are made available, more parking stickers will be issued to students and staff members, Wiegand said.

"Parking in service drives will be prohibited," he said. "Provisions will be made for visitor parking."

The committee found in its investigation that a major part of the parking problem is one of distribution and Wiegand expressed hopes that the new plan will help find a solution. The committee learned the parking area north of the Jordan plots seldom has more than 12 cars in it. The lot has 245 parking spaces.

Comedy Opens

(Continued from page one) tray Penny, the easy-going mother who is working on her latest play, "Sex Takes a Holiday." It is Penny who puts the two kittens, Groucho and Harpo, to work as paperweights.

Sonia Goldstein will appear as Essie, a ballerina who cooks "lovedreams," and Alice, the most normal member of the clan, will be played by Ruth Lyne.

Dyanne Michaud will be seen as Olga, a dethroned Russian countess, and Adele Gillispie will play Gay Wellington, an intoxicated actress.

Jeanne Risler will play Rheba, the maid, and Joseph Marko will appear as Donald. Mr. and Mrs. Kirby will be played by Lee Stern and Agnes Porter, and Arch Rugh will portray Ed.

Moylan Mills will appear as Henderson, a federal tax collector. John Devlin will play Paul; Lowell Keller, Tony, and John Anniston, Kolenkov. Richard Neuweiler will portray Mr. DePinna. The three G-men will be played by Charles Gaunt, George Resh, and Harry Carroll.

Michael Forgacs designed the settings. Heads of crews include Richard Speiser, technical assistant; Renee Kluger, properties; Richard Patterson, lights, and Sally Johnson and Thomas Owens, advertising.

Polly Williams is head of the costume group. James Simpson is directing the sound group, and Nancy May is in charge of make-up. Stage manager is Shirley Gallagher.

Amendments --

(Continued from page one) that absences and abstentions would be considered as votes against the proposal.

Through a telephone poll last night, the Daily Collegian learned that 6 members of cabinet have

been instructed to vote for the Olmsted amendment, while 3 other members have been instructed to vote against it. Twelve members have either not been instructed by their groups or such instruction is pending.

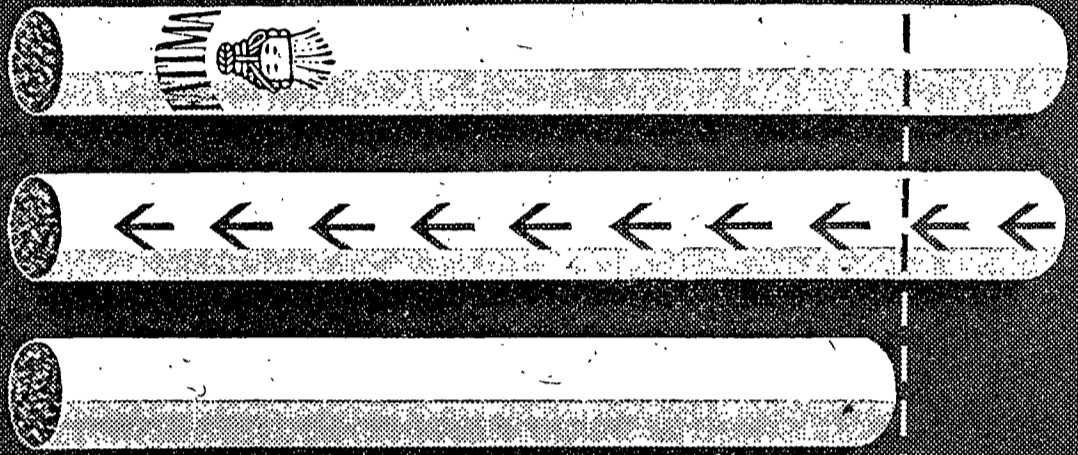
In a statement last night, Olmsted said students would benefit by the amendment because the poll would show cabinet the trend

in student opinion and because the postponement would give more time for all concerned to permit careful study of the fee change.

Also on the cabinet agenda is voting on the preferential seating proposal which would reserve section EH of Beaver Field for a special cheering section.

COMPARE FATIMA*

with any other KING-SIZE cigarette



- 1 FATIMA filters the smoke 85 millimeters for your protection.
- 2 FATIMA'S length cools the smoke for your protection.
- 3 FATIMA'S length gives you those extra puffs - 21% longer.

AND you get an extra-mild and soothing smoke - plus the protection of

FATIMA QUALITY



* Compare Fatima with any other King-Size cigarette. If you're not convinced Fatima is better, return pack and unsmoked Fatimas by Aug. 1, '52 for money back plus postage. Fatima, Box 37, New York 1, N.Y.

Best of All KING-SIZE Cigarettes

CLASSIFIEDS

LOST

SILDE RULE in Willard or Eng. A. Call Larry, 5051 Ext. 278. Reward.

K&E SLIDE RULE between corner Fairmount-Garner and Shortlidge Road-Pollock. Finder call Bob Wylie 4937.

PAIR GOLD rimmed glasses, green case, between Walker Lab and Recreation Hall. Please return to Student Union.

SCHAFFER JR. lead pencil in Agricultural Engineering Building. Brown. Finder call Wayne Pihl, 2044.

FOR SALE

HOUSE MANAGERS: Practically new-green band dinnerware; stainless steel silverware; electric Coca-Cola cooler; Griswald french fryer; hot plates, sandwich grills (electric); combination broiler and grill (gas); 1/3 h.p. compressor; new carbonator; red leather dura-chrome upholstered chairs; water, cocktail, juice glasses; S' smoke canopy for kitchen; waffle iron - Selling way below cost *all Wink's Skytop. 6592.

KEEP YOUR trailer snug and warm with a Coleman oil heater, model 666A. Radiating, circulating 31,000 BTU's an hour. Fuel-air control saves up to 25% on fuel; low draft burner, oversize heat exchanger, new functional air flow design. See it soon at Houts. O. W. Houts & Son, Inc. N. Buckhout, State College; 6703.

BEIGE 1947 CHEVROLET convertible; excellent condition; fully equipped. New top and tires. Only \$1,100. Call 361 Pleasant Gap after 6:30.

TIRED OF walking? Ride a bike. See at 716 Windercrest. New W.W. tires. \$15.00.

YES, MINORS are allowed at Center Stage featuring Hedda Gabler this weekend. Tickets at Student Union.

1957 PLYMOUTH COUPE. Blush-green in color, this car is a real buy. Call David

Apgar, after 6 at 6356.

TWO EXCELLENT reserved seat series tickets. E & B this weekend. \$4.00 each. Call 3121 after 7.

NEW GENTS' Benrus "Benjamin Franklin" wristwatch. A guaranteed \$125.00 value for \$68.75. Call Tom at 4249 after 8 p.m.

APARTMENT WASHER 3 1/2 ft. high; wringer; self-draining. Original price \$60. Now \$35. Phone 6395 after 5.

ROOM & BOARD

ROOM and BOARD at Marilyn Hall. \$16 per week. Ask for Mrs. Eileard at 317 E. Beaver Ave.

FOR RENT

FIRST FLOOR - room with bath and outside entrance in private residence. Available to one student in exchange for twelve hours work per week. Apply in person after 6:00 p.m. at 740 W. Fairmount Ave.

1/2 DOUBLE ROOM with cooking facilities. Call 8441 ext. 2345 between 8 and 5. After 5, 4078.

CENTRALLY LOCATED one room apartment (no cooking). Bath semi-private, suitable for one or two graduate students or part-time assistants. \$6 per week double. \$9 per week single. Dial 6-773 before five.

SINGLE ROOM for male student. Graduate or student with heavy curriculum preferred. West Park Ave. Phone 2534.

MISCELLANEOUS

IF YOUR typewriter needs repairs, just call 2492 or bring machine to 633 W College Ave. Mr. Beatties' 28 years experience is at your service.

TYPING and MIMEOGRAPHING - Secretarial Service - Room 207 Hotel State College. Phone 4906.