

# 281 Coeds Register For Rushing

Two hundred eighty-one coeds have registered for formal sorority rushing, Mary Brewer, assistant to the Dean of Women, said yesterday.

Coke dates will be held from 1 to 5 and 6:30 to 7:30 p.m. today through Friday at the 19<sup>th</sup> suites. School clothes will be appropriate for these affairs. No food will be served. The same schedule blanks will be used all week for coke dates.

Rushes are to return coke cards at 8 a.m. today to the Panhel post office in Woman's Building.

The averages required by the individual sororities are available for rushees at the post office. Information concerning cost of sororities may be obtained at the Dean of Women's office.

Freshman women who attend coffee hours will receive 10 o'clock permissions March 3, according to Marion Whiteley, Panhellenic Council rush chairman. Women in the water saving instructor's class may obtain excuses from the class by signing a list at the dean of Women's office.

Marilyn Levitt, Panhel president, asked rushees to attend as many coke dates as they possibly could. Miss Levitt advised rushees not to cut sororities until the At Homes.

All communication between sororities and a rushees will be handled by the post office. Miss Brewer asked rushees to cooperate with the post office by following the rush schedule.

## Co-Edits

### Delta Tau Delta

Newly-elected officers of Delta Tau Delta are Thomas Judge, president; Robert Gribben, vice president; Richard Haenel, treasurer; and Joseph Kline, secretary.

New initiates of the fraternity are Thomas Anderson, Fred Ernest, James Guerdon, William Johnson, Bruce Nichols, David Odiorne, David Pine, James Rugh, Darrell Shoaff, and Earle Van-Alst.

### Alpha Chi Omega

Alpha Chi Omega has initiated Donna Lee Bane, Helen Banes, Nancy Barth, Elizabeth Byrem, Lynn Crowley, Alice Hennessy, Ona Kay Lee, Nancy Maloy, Nancy Parrish, Norene Runyeon, Nancy Sadler, and Gayle Wismer.

Before initiation, a buffet supper was held for the pledges. Refreshments were served following the ceremony.

## Engagements

### Cover-Gillispie

Mr. and Mrs. Earl W. Gillispie of Lower Merion have announced the engagement of their daughter, Adele, to Harry Cover, son of Mr. and Mrs. Harry G. Cover of Pittsburgh.

Miss Gillispie, a senior in sociology, is a member of Alpha Gamma Delta, Players, and the College symphony orchestra.

Mr. Cover, former All-College vice president, is a member of Skull and Bones. He is a senior in labor-management relations.

### Activity Cards

Women students have been asked to bring their activity cards up to date by Mrs. Cordelia Hibbs, assistant to the Dean of Women. The cards are on file in the Dean of Women's office.

Mrs. Hibbs pointed out that several honoraries use the files when considering new members. She said that prospective employers and investigators also use the files.

### Photo Deadline Today

Noon today is the deadline for submitting pictures of candidates for the title of independent sweetheart.

Pictures may be turned in at the Student Union desk in Old Main. The name and address of the coed should be on the back of the photograph.

The contest is being sponsored by the Association of Independent Men and Leonides.

## Co-Edits

### Sigma Phi Alpha

Sigma Phi Alpha held a formal banquet for visiting alumni. Following the banquet, initiation ceremonies were held. Those initiated were John Christian, Barry Fein, Paul Linvill, and Kinzo Yamamoto.

### Beaver House

Recently elected officers of Beaver House are Arnold Gasche, president, and Robert Fry, vice president.

### Beta Sigma Omicron

Beta Sigma Omicron recently initiated Greta Dunsmore and Norma Zehner.

### Theta Xi

Theta Xi has initiated Richard Brown, Robert Brust, John Chemsak, Barry Collins, Clarence Davis, Duane Drew, Lloyd Eddings, Paul Gery, Joseph Knepper, Ellis Laubach, Lael Meixsell, Joseph P.orkowski, Richard Robinson, Winfield Scott, James Shaw, Ralph Skomsky, Richard Smedley, and George Steinhauser.

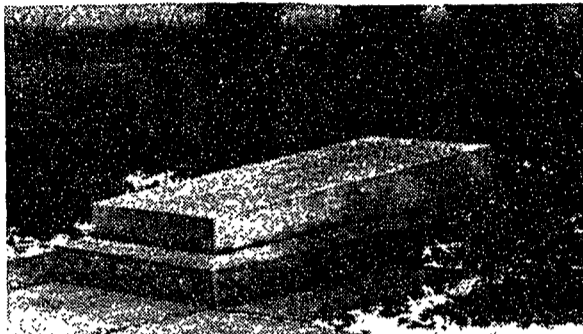
### Acacia

Acacia has initiated William Alden, John Hoffman, Howard Hudson, Thomas Irving, Peter Judd, John Kaufman, Jackson Keim, Frank Kilmer, William Kilmer, Charles Manwiller, Duane McIntyre, Charles Rohrbek, Stanley Thomas, and William Warncke.

The fraternity has pledged William Brubaker.

PLACES TO KNOW

Q.—Where is the only grave on campus?



PLACES TO KNOW

A. On the west side of Schwab Auditorium is the grave of George W. Atherton

Largest Selection of Men's SUITS and TOPCOATS at the most reasonable prices

The place to know is



204 W. COLLEGE AVENUE Across from Engineer. Bldg.

For the Finest in Footwear

Glick's

120 S. Allen St.

For All Your Fine Jewelry



MAX HARTSWICK'S SPORTSMAN'S SHACK

A COMPLETE LINE OF FISHING TACKLE, RODS, LICENSES, LINES, FLIES, FLY TYING MATERIAL

CALDER AVENUE

Smart Shop

Means fine clothes

At reasonable prices

Right for Co-eds

Try today

THE BIKE SHOP TO KNOW

W. F. KRUMRINE BIKE SHOP

WHIZZER MOTORS — RALEIGH BIKES SALES — SERVICE

Rr. 433 W. COLLEGE AVE

PHONE 4723

We Are Proud To Have Been Photographers For The 1951

First-Rated All-American La Vie

Let Us Help You, With Our First-rate Photographic Work.

PENN STATE PHOTO SHOP

212 EAST COLLEGE AVENUE

WOODRING'S FLORAL SHOP

BLOOMING FLOWERS THROUGHOUT THE YEAR FOR ALL OCCASIONS.

BEAUTIFUL CORSAGES FOR FORMAL AFFAIRS.

Phone 2045

117 E. COLLEGE AVE.

DELIVERY SERVICE

PHONE 6821

CENTER CLEANERS

LAUNDRY & DRY-CLEANING

REAR 352 COLLEGE AVE.

24-HR. CLEANING

PERSONALIZED

STATIONERY SPECIAL

Box of Harmony writing paper with colored border and your name in matching color scheme.

THIS WEEK ONLY

\$1.39

REA & DERICK'S

for Van Heusen Shirts

Hur's

MEN'S SHOP

Opposite Old Main

Opposite Old Main

If You Don't Know . . .

- WHO FOUND IT?
- WHERE TO BUY IT?
- HOW TO SELL IT?

TRY

COLLEGIAN CLASSIFIEDS

Page 8