

One Cent Votes To Select King

The 19 candidates for Mardi Gras king will really know how much they are worth to their friends. Each vote will cost a penny. The winner will be crowned at the Mardi Gras which will be held from 8 p.m. to midnight Saturday in Recreation Hall. The proceeds will go to the Charlotte Ray Scholarship Fund, established to help needy women students.

Thomas Bradrick, sponsored by Kappa Alpha Theta, is a senior in business education. He is president of Sigma Alpha Epsilon.

Kappa Sigma president Walter Conil, is Alpha Omicron Pi's candidate for the honor. Conil is a hotel administration senior and a member of Greeters Club.

Alpha Xi Delta has entered Donald Cook in the contest. He is vice president and rushing chairman of Beta Theta Pi. Cooke is also a member of Blue Key, junior men's honorary, and Phi Epsilon Kappa, physical education society. He is majoring in recreation and is president of the Recreation Society.

William Gourley is being sponsored by Chi Omega. He is treasurer of Delta Tau Delta. A senior horticulture student, he is a member of the Hort Club. Gourley also belongs to the Arnold Air Society.

Sponsored by Alpha Chi Omega, Daniel Grove is a senior in pre-law and is a member of Phi Delta Theta. He has played varsity lacrosse and appeared in the recent Thespian show.

Junior class president Michael Hanek is the Leonides candidate. As president of Dorm 44 he served on the Nittany Dorm Council. He is a member of the AIM Board of Directors. Hanek is a junior in psychology.

Thomas Hanna, head cheerleader, is being sponsored by Delta Zeta. He is president of Alpha Chi Rho and serves on the Interfraternity Council board of control. Hanna has also appeared in Thespian shows and was a member of the Glee Club.

Gamma Phi Beta entered the name of William Hoke, president of Sigma Pi. He is a senior in psychology and is head usher at chapel.

Thomas Judge, Alpha Gamma Delta's entry, is chairman of the Home Economics Council student-faculty board. A hotel administration senior, he is a member of Greeters Club, Sigma Eta Alpha, hotel administration society and the Junior Hotel Men of America.

Marc Kimelman, sponsored by Sigma Delta Tau, is vice president of Skull and Bones, senior men's honorary. He is business manager of Froth and treasurer of Thespians. Kimelman is a member of Alpha Phi Omega, service honorary, and serves as circulation manager of Inkling. A member of Phi Epsilon Pi, he is a senior in liberal arts.

Beta Sigma Rho president Morris Krap, is being sponsored by Alpha Epsilon Phi. He was a boxing manager and has appeared in Thespian shows. Krap is a senior in pre-dentistry.

Theta Phi Alpha's candidate is Donald McMahan. He is president of the Junior Hotel Men of America and a member of Greeters Club. A senior in hotel administration he is a member of Delta Tau Delta.

Samuel Marino, Kappa Kappa Gamma's candidate, is a junior in labor management relations. The boxer is a Sigma Nu and past president of Druids, sophomore men's honorary. Marino is chair-

man of the Hat Societies Council pep rally committee.

Athletic Association president Donald Maurey is Delta Delta Delta's entry. A member of Skull and Bones, and Delta Upsilon, Maurey is captain of the wrestling team.

Arthur Rosfeld, sponsored by Delta Gamma, is vice president of the sophomore class. He is president of Blue Key, vice president of Phi Delta Theta, and a member of Thespians. Rosfeld is a junior majoring in liberal arts.

Stanley Silberman, Phi Sigma Sigma's candidate, is president of Zeta Beta Tau. He is participating in the Interfraternity Council workshop. Silberman is a health education major.

Editor of the Penn State Engineer Burt Sparhawk is being sponsored by Phi Mu. He is majoring in engineering and is a member of Tau Beta Pi, engineering society and Triangle. Sparhawk is also in Skull and Bones.

The Women's Student Government Freshman Council is sponsor of Roy Tarr. Tarr is a freshman majoring in chemical engineering.

George Wieand, sponsored by Kappa Delta, is a member of Pi Kappa Alpha and is a liberal arts junior.

Princess Takes Gems on Tour

By the ASSOCIATED PRESS Princess Elizabeth apparently shares the belief of many young women that diamonds are a girl's best friend.

She's bringing a whole treasure chest of diamonds and other precious stones to wear on her visit to the nation's capitol starting today.

Two magnificent diamond tiaras are the highlights of the Princess' traveling jewel collection.

But she'll also dazzle the natives with necklaces—pearl by day, diamond by night—and a wealth of other glistening trinkets, such as earrings, bracelets, clips, brooches, insignia presented during her current Canadian tour.

Finally, there's the diamond star of the Order of the Garter—worth a king's ransom all by itself.

Less favored girls can salve their envy with this reflection, however: some of the royal gems are hand-me-downs from the princess' mother, Queen Elizabeth, and her grandmother, Queen Mary.

Coffee Hour Today

One-half of the Engineering and Agriculture Student Councils will be guests at the regular weekly Dean of Men's coffee hour at 4 p.m. today in the Dean of Men's office.

The programs, sponsored jointly by the Dean of Men's office and All-College Cabinet, may be attended by any student of the College.

IM Shows First Tie Of Season

Activities in White Hall gained momentum last night as progress was made in the schedule. Basketball results showed competition becoming keener.

The first tie of the season was recorded when Kappa Delta came from behind in the third quarter to equal the score, 24-24, in the closing seconds of play. In another thriller, Delta Zeta overcame Delta Gamma's third quarter lead to slide through a 17-16 victory. Nicoll paced the winners with a high of 10 points.

In the direct opposite, Alpha Omicron Pi completely swamped Thompson A 53-11. Records show Ewing getting a fair share of the winner's tallies with 29 points. Gamma Phi Beta trounced Delta Delta Delta to the tune of a 23-5 score. Garnering 12 points, Martin set the pace for the winners.

In table tennis, Kappa Kappa Gamma topped Phi Sigma Sigma, Phi Mu destroyed Chi Omega's attempts, Kappa Alpha Theta swamped Gamma Phi Beta, and Alpha Xi Delta completely stopped Alpha Epsilon Phi. The remainder of the games left Sigma Delta Tau forfeiting to the Co-op and Beta Sigma Omicron forfeiting to Alpha Chi Omega.

WRA IM Schedule

Table Tennis

Wednesday

6:30 Delta Gamma vs Delta Zeta. Gamma Phi Beta vs Delta Delta Delta.

7:15 Alpha Omicron Pi vs McAllister. Kappa Delta vs Thompson D.

Basketball

Wednesday

7:00 Thompson B vs Simmons. Chi Omega vs Phi Mu.

8:00 Kappa Kappa Gamma vs Alpha Epsilon Phi. Alpha Chi Omega vs Thompson C.

Engagements

Wertman-McMillin

Mr. and Mrs. Thomas McMillin of Brentwood announce the engagement of their daughter, Virginia, to Pvt. Edwin Wertman, son of Mr. and Mrs. Paul Wertman of Palmerton.

Miss McMillin is a junior in the School of Education and is a member of Alpha Chi Omega.

Pvt. Wertman is a graduate of Springfield College, Mass., and is now serving with the armed forces in Aberdeen, Md.

Cwens to Give Awards

Cwens, sophomore women's honorary, will give four scholarships of \$50 each to worthy or needy sophomore women, according to Joan Hutcheon, publicity director.

At a meeting of the organization Monday night Dorothy Hemphill and Joan Lee were appointed to the pep rally committee.

Trip Brings Appreciation Of Penn State

By CAROLYN BARRETT

A trip to another college campus either makes one envious or appreciative. In our case we became quite aware of the advantages Penn State possesses.

We took a trip to West Chester State Teachers College. It didn't take very long to realize that music and phys ed are the main fields of interest.

The place swarmed with coeds who were wearing shorts or blue jeans. A tennis racket seemed to be the most popular accessory to those outfits. As for the music students, each room in the dorm is used as a private little practice room. Fortunately is the one whose neighbor happens to be skilled with his chosen instrument!

Big Time Team

Although Penn State students may complain about the food and the waiter service, it is, in our estimation, much to be preferred to a system which requires students to carry their breakfast trays out to the kitchen to be cleared.

However unimpressive the football team may be for the rest of this season, we shall appreciate the precision and masterminding which distinguish it as a big time team.

Then there was the ratio. Men seemed about as scarce or unavailable as a date on a big weekend. In fact, coeds were forced to dance with each other if they wanted to join in the square dancing. Some members of campus society might not consider that situation as a disadvantage.

It Rained

Thank heavens for Glennland pool and White Hall! In spite of all the health education majors, as they're called at West Chester, a short cross-country hike is necessary to reach the YMCA swimming pool which is in the center of the downtown area. The "Y" pool is being used until a new one is constructed at the college.

It rained in West Chester, too, so we didn't feel sorry when we began the long trip back to State College.

Philotes Initiates

Philotes, independent women's social organization, initiated Shirley Beckley, Anna Burkett, Leila Madigan, Lauretta Taylor, Marilyn Wolf, Margaret Reismier, Evelyn Goss, and June Christoff yesterday.

NEW College Diner

Sidewalk Counter Service

for

FREZZER FRESH

ICE CREAM

Between The Movies

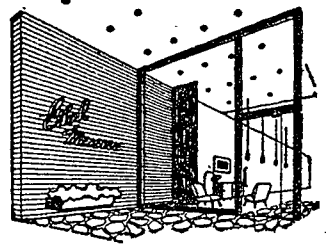
ALD to Meet Tomorrow, To Hold Freshman Tea

Members of Alpha Lambda Delta, freshman women's scholastic honorary, who plan to attend the Alpha Lambda Delta tea, will meet at 12:45 p.m. tomorrow in McElwain study lounge.

The tea is being held for all freshman women who were salutatorians or valedictorians of their high school classes. The tea will be held tomorrow from 3:30 to 5 p.m. in the northeast lounge of Atherton Hall. Students may wear school clothes.

Alpha Lambda Delta members interested in helping with arrangements for the tea will contact Virginia Opczenski, 427 McElwain.

Players Welcome you to "OUR TOWN"



thru the Looking Glass

with George

Did you ever see that Smith Brothers billboard showing a box-of-cough drops and pictures of the bewiskered brothers with the caption, "Take one to bed with you?" Me, I prefer my widdle teddy bear.

Women Start Here

But how did we get into this subject? I know; I was thinking of those dreamy rhinestones Ethel just received. Imagine . . . you can glitter like a million for tooth paste money. 22 different styles of rhinestone earrings for only \$1.20 a pair. (Not sold separately.) Dazzling rhinestone necklaces for only \$1.50. Sparkling rhinestone pins for a paltry \$1.50. Only \$4.20 for the works. You'll look so lovely his eyes will be dancing faster than his feet. That's if he doesn't just up and swoon.

Put Romance in the Dance

Of course, if you're going dancing, you'll need an evening bag. And that's where you're in luck again. Ethel has them and they're exquisite. Petite mesh bags, bead bags, embroidered bags . . . they start at \$5, but the compliments never end. Here's another good buy: a Slimfold. This is a wallet almost as thin as the bills that go in it. Very feminine with plaid, plain, embroidered, or beaded backs. Only \$3.

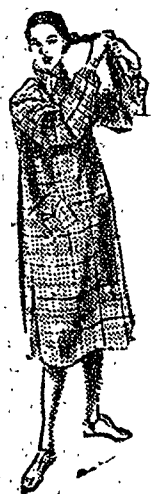
Men Start Here

O.K. Henry, it's your turn. If you haven't a stud set (or even if you have) you should see Ethel's mother of pearl, blue stone, and gold and silver sets. They're an investment because you'll go thru life impressing people with your excellent taste.

Ethel has silver key chains too at only \$2.75. And that's not all. This is all the space I have though, so stop in and surprise yourself.

Ethel Meserve

112 E. COLLEGE AVE. STATE COLLEGE, PA.



THE ROBE THAT TAKES A SHOWER

It's reversible . . . quilted plastic on one side, plaid wool on the other.

PLAID ROBES
PLAIN WOOLEN ROBES

Danks & Co.

S. Allen St.

Do you have BIRTHDAY PROBLEMS?

Another birthday and a dwindling purse . . . She'd love a bracelet, a pair of earrings or a choker. How about a lighter or cuff links for him? Come see our selection of favorite gifts today.

