

# May Day Program Opens With Dance

Pink, green, and blue streamers from two large maypoles, and a bandstand enclosed in lattice work decorated with artificial flowers and hemlock will be featured at the Coronation Ball from 9 to 12 tonight in White Hall.

The ball, sponsored by WSGA, will open the May Day program.

Tickets for the informal dance, with music by Gene Magill's orchestra, are on sale at the Student Union desk and may be purchased at the door. The price is \$1.50 per couple.

Parents of ticket holders will be admitted free. Card tables will be available for bridge and canasta. A sherbert punch will be served.

### Exhibits In Lobby

Exhibits on women's student government will be set up in the lobby outside the gym. They will include two white cards tacked on easels, one with pictures of present members of judicial, house of representatives, and senate, the other explaining the duties of these groups. A scrapbook of pictures from other May Days, and booklets explaining the functions of WSGA will also be on exhibit.

Barbara Werts and Elizabeth Stuter, freshman senators, are in charge of the displays.

Barbara Klopp is general chairman for the dance. The decoration committee includes Nancy Kern, chairman, and Juliana Fees, Carolyn Pelczar, Kajsa Craig, Catherine Greenbaum, Betty Agnew, Josephine Waterhouse, and Ruth Freed.

Patricia Uplinger, Joan Wiley, Ruth Johnson, and Doris Cook are in charge of publicity.

# Eisenhower Jr. Receives Key

Milton S. Eisenhower Jr., son of the president will be one of 38 Kansas State College students to receive K-Key publication awards at a student publication banquet tonight.

The gold K-Keys are given for outstanding work on student publications. Eisenhower's key will have two strips signifying work on two publications. He was business manager of the fall semester Kansas State Collegian, daily newspaper, and sports editor of the Royal Purple yearbook.

A senior in technical journalism, he will receive his degree May 27.

The last National Leaguer to better the .400 mark was Bill Terry of the Giants with a .401 average in 1930.



M. S. Eisenhower Jr.

# Co-Edits

## Sigma Delta Tau

Members of Sigma Delta Tau sorority were hostesses at a meeting held with Phi Sigma Sigma and Alpha Epsilon Phi sororities.

Dr. Laurence Rosan, philosophy instructor, spoke on "Outstanding Women in the Old Testament." Refreshments were served.

## Kappa Alpha Theta

Kappa Alpha Theta sorority entertained Delta Tau Delta fraternity in the recreation room of McElwain Hall. Skits were presented and games were played.

## Alpha Gamma Delta

Alpha Gamma Delta sorority held its annual formal pledge dance at the Delta Chi fraternity house Saturday night. The theme for the dance was Cafe Al Ga De.

## Kappa Delta Rho

New initiates of Kappa Delta Rho fraternity are William Bair, Robert Bethea, Robert Cassol, Herbert Flora, Ned Kocher, Vincent Purcell, Walter Lindquist, and John Swartz.

# Theta Phi Alpha Host At Convention

The local chapter of Theta Phi Alpha sorority was host last weekend for visiting delegates from the North Atlantic province of the sorority.

Mrs. Carl Steigerwald, national president, was guest of honor. Visitors from Syracuse and Rawlins were present.

A tea was held last Thursday in honor of the national president, and sorority members attended a luncheon at the State College Hotel Saturday.

A Founder's day banquet, was held Saturday night.

# LUTHERAN STUDENT ASSOCIATION

421 W. College Ave.

Fri. 6:30—Softball (meet at Student Center),  
8:30—Work and Play

Sat 9 A.M.—Midnight workers needed for banquet

Sun. 9:30—Student Bible Class  
10:45—Worship, Grace Lutheran  
5:30—Student Supper, 30c  
6:45—"The Christian Family"

Mrs. A. E. Kericomer, Jr., speaker

# The VARSITY RESTAURANT

invites

You and Your Parents

to

Dine With Them

Friday and Saturday

"For the best in eating pleasure"

# STARLITE DRIVE-IN

ON BELLEFONTE ROAD

SHOWTIME 8:30 P.M.

FRIDAY & SATURDAY

# "Curtain Call at Cactus Creek"

(Technicolor)

Donald O'Connor

Gale Storm

Walter Brennan

— PLUS —

"OPERATION HAYLIFT"

Bill Williams  
Ann Rutherford  
and the U. S. AIRFORCE

# COLLEGE MEN:

## BE PREPARED FOR YOUR DRAFT DEFERMENT APTITUDE TEST

Selective Service now urges and all but demands that every draft-eligible college man take the deferment aptitude test which will be held in May and June, regardless of scholastic standing. General Renfrow has said that should there be no test score for a student seeking deferment, the draft board may order his induction.

Now is the time to prepare for this all-important test which will help determine whether you can serve your country best by continuing your studies or entering the Armed Forces.

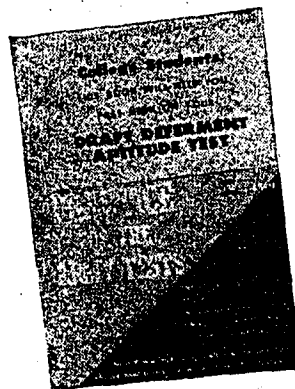
### WHAT THE APTITUDE TEST WILL ASK YOU

There is no quicker, easier, more inexpensive preparation than PRACTICE FOR THE ARMY TESTS. This "on-the-ball" book contains complete, simplified study material for the questions and answers on the four subjects you must know to obtain a high score, it covers: 1. Ability to read and comprehend materials collegians must study; 2. Ability to deal with words; 3. Interpretation of data in charts, graphs, tables, and diagrams; 4. Arithmetical reasoning which will require no advanced mathematical knowledge. These are the announced subjects of the test. And these are the subjects for which PRACTICE FOR THE ARMY TESTS prepares you.

### GET IT AT YOUR COLLEGE BOOKSTORE

PRACTICE FOR THE ARMY TESTS is vitally important to your career. Get your copy immediately! If the college bookstore is out of stock, give them your order and they'll have a new stock in a few days.

**BARNES & NOBLE, Inc.**  
105 Fifth Ave. New York 3, N. Y.



# Engagements

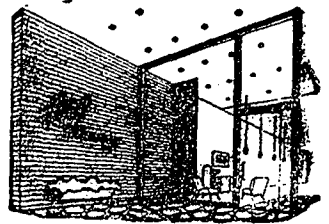
## Leinbach-Ashenfelter

Mr. and Mrs. Horace Ashenfelter of Collegeville have announced the engagement of their daughter, Jane, to Harold Leinbach, son of Mrs. Katie Leinbach, of Esterly, Pa.

Miss Ashenfelter is a senior in home economics, and a member of Alpha Gamma Delta sorority. Mr. Leinbach is a senior in liberal arts and a member of Pi Kappa Phi fraternity. He is former IFC president.

## May Day Practice

In case of rain, all women participating in the May Day ceremony have been asked to report to the second floor lounge of Old Main at 3 p.m. today.



# thru the Looking Glass

with George

If you are one of the two or three girls who isn't a Queen of Something or Other, don't fret.

Ethel says every girl can be a queen. A pretty choker of white beads and matching earrings . . . a smart new straw bag and hat—it doesn't take more than a few dollars to walk out of Ethel's looking and feeling like Queen of the Universe.

## Make way for The Queen

Speaking of Queens, no coed has a chance on Sunday. Of course, the nicest gift you can give Mom. Ethel doesn't sell . . . your proud smile of appreciation for the woman without peers.

But Ethel does have a store full of grand remembrances for Mom. Both personal, and for the home.

## Mom will love these

For example, new California pottery bowls that serve for flowers, salads, candy. They're lovely, with a sunburst effect in green or aqua. Prices range from \$2 to \$5.

If she prizes bone china and ceramic what-nots, you'll have a wonderful time choosing from Ethel's 40' display of tea cups, sets of dishes, salad bowls, relish dishes, salt and pepper shakers . . . the list is endless.

Or Mom is sure to love a pretty table cloth. Or smart new bamboo place mats (8 for \$2.40) in natural, yellow, chartreuse, and red.

## Bring dad along

If you and dad are splurging, you'll find Waring Blenders, automatic percolators, bean pots, silver services, personal lamps . . . loads of lovely things.

But if you prefer something personal, stop in at the leather goods and jewelry counter inside the door. For that matter, if Mom is coming this weekend, why not suggest she stop in at Ethel's if she has a little time to spend shopping?

*Ethel Meserve*

112 E. COLLEGE AVE  
STATE COLLEGE, PA.