

Leonides Makes Nominations For Officers

At a special meeting of the Leonides council Monday evening, nominations were made for new Leonides officers. Nominations will be reopened at the regular meeting next Monday night.

Those women nominated are: Sorley Snyder and Doris Sher, president; Roberta Reece and Edna Baylson; vice president; Mary Pettigout, recording secretary; Vivian Peterson, corresponding secretary; and Yvone Carter, corresponding secretary; Anne Burlingame and Catherine Green, treasurer; and Elizabeth Johnson, parliamentarian.

The Leonides Council meeting will be held next Monday night at 6:30 in the second floor McElwain lounge. Final nominations will be made at this time. Qualifications must be given at the time of nomination.

Leonides elections will be held early in April and will be open to all independent women.

Photos On Display In Pattee Library

A display of approximately 100 photos from the fifth annual Traveling Salon of Popular Photography magazine is being shown in the main lobby of Pattee library until tomorrow.

The display, under the auspices of the Penn State Camera club, has some of the finest examples of contemporary photography. It includes the work of some of the leading professionals and amateurs from all over the world.

The display includes a wide variety of subject matter ranging from the dramatic and human interest type of photographs to serene landscapes, which are highlights of the show.

Technical data describing the type of equipment and camera settings used in taking the pictures are written on each one for the interest of photographers.

Beta Sigma Omicron

Newly elected officers of Beta Sigma Omicron sorority are Marion Wiser, president; Joanne Snavelly, vice-president; Ruth Ann Davies, recording secretary; Shirley Miller, corresponding secretary; Barbara Smith, treasurer; Julia Savage, social chairman; Margaret Ann Bratt, rush chairman; Billie Ann Deuvall, assistant rush chairman; and Barbara Bollban; pledge trainer.

Co-Edits

Alpha Omicron Pi

Alpha Omicron Pi held their annual sorority elections Monday night. The officers elected are Jane Morton, president; Jet Webber, vice-president; Virginia Haudenschild, recording secretary; Katherine Hoy, corresponding secretary; Emma Jean Way, social chairman; June Leighty, PanHellenic delegate and Pat Williams, treasurer.

Zeta Beta Tau

The Initiation ball of Zeta Beta Tau was held at the Nittany Lion inn on March 3.

The new initiates are Stanley Bushkoff, Herbert Cheskis, Robert Wiser, Morton Solomon, Albert Landsman, Ascher Barmish, Jay Simmons, David Schwartz, and Stan Goldman.

Acacia

Newly elected officers of Acacia fraternity are George Ripple, venerable dean; Robert Goodman, senior dean; Merlin Miller, junior dean; Alfred Wilson, secretary; Wayne Williams, treasurer; James Class, rushing chairman; and Arthur Woodard, alumni secretary.

Alpha Gamma Rho

The following officers were elected by Alpha Gamma Rho fraternity: Kendall Tomlinson, noble ruler; Charles Rightmire, vice noble ruler; Al Zihmer, secretary; Lou Laffoon, treasurer; Bill Kincaid, house manager; Dick Spanley, alumni secretary; Ed Landis, chapter representative; Dick Dun, chaplain; and Tom Scott, usher.

Pi Lambda Phi

Pi Lambda Phi pledged five men. They are Allen Brown, Jack Cohen, Morton Forbes, George Silverblatt, and Nelson Goldberg.

This weekend is open house for the Pi Lambda Phis. The weekend will feature a square dance Friday, a candle light dinner, and a party afterwards.

Phi Sigma Kappa

Phi Sigma Kappa initiated eight into the fraternity. They are Jack Clark, Ralph Clark, Jack Cranston, Joseph Bonchonsky, Reeves Lukens, Donald Fields, John Russ, and Ray Oberdick.

The house was entertained last week by the Chi Omega sorority.

Prof To Give Report

Patrick J. Boner, instructor in economics, will report on a new fraternity management program at a meeting of Interfraternity council at 7 o'clock tonight in 317 Willard hall.

To The Woods

Paul Bunyan Visits State

By LEN KOLASINSKI

Paul Bunyan, legendary woodsman, visited the campus 11 years ago to pay tribute to the Forestry ball. As he wandered around, the giant lumberman left behind a trail of mammoth white footprints. Tribunal and cabinet were exasperated.

The truth of the matter is that Bunyan symbolized the theme of the Forestry ball. His "footsteps" were whitewashed on the paved walks by a team of forestry students. Tribunal warned against such publicity.

World War II interrupted Bunyan's capers on campus, for the giant was engaged in war work. However, the Hemlock Looper was substituted for the woodsman. The night before the ball, the campus was covered with loops, and the Looper retreated to Recreation hall. Couples attending the ball discovered that the Hemlock Looper was a huge, green worm.

March 17 marks the day for Bunyan's return to Penn State. Darrell Rishel and his orchestra will serenade the woodsman at a semi-formal dance which will last from 9 to 12.

Whether Bunyan will leave his telltale footprints behind cannot be predicted with a certainty. Since '40 the giant woodsman may have washed the mark of the great northwestern woods from his boots.

Theater Party Tickets Now Available at SU

Tickets for the Penn State club theater party at Center stage Friday night may be picked up at the Student Union desk in Old Main, Moylan Mills, club vice-president, said yesterday.

Mills said approximately 50 persons had signed up for the party. He said only those persons who signed the official list are eligible to pick up tickets. Half the price of members' tickets will be paid by the club but members will have to pay full price for guests, Mills said.

Journ Fraternity Plans Banquet

Planning for the 11th annual Gridiron banquet, sponsored by Sigma Delta Chi, men's professional journalistic fraternity, began Monday when the group held a business meeting.

The banquet, scheduled for Thursday, April 12, will be the second since the war. The banquets were suspended during the war and were not resumed until last year.

President Eisenhower will be guest of honor at the dinner, which is modeled after the Gridiron banquet given by the National Press club in Washington every year.

Lester To Address Psi Chi Group Tonight

Psi Chi, psychology fraternity, will hold a business meeting tonight at 7:30 in 105 Forestry building. A speech by Dr. Lester Myer will follow the meeting, President Jack Gillespie announced.

Dr. Myer, who is chief of special education in Harrisburg, will speak on "Psychology of Exceptional Children." Refreshments will be served after the speech.

For Best Results Use Collegian Classifieds

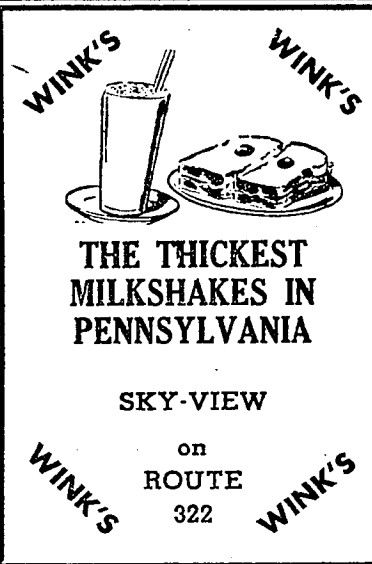
Engagements

Anderson-Warner

Mr. and Mrs. Wilbur G. Warner of Lehigh, Pa., announce the engagement of their daughter, Jacqueline Ann, to Robert H. Anderson of Mt. Lebanon, Pittsburgh, Pa.

Miss Warner is a senior in commerce and finance and is president of Phi Mu sorority. She is also a member of Chimes, Phi Theta, Masquerettes, and Players.

Mr. Anderson, a member of Phi Delta Theta fraternity, is a senior in commerce and finance and is in the Thespian club.



WINK'S

THE THICKEST MILKSHAKES IN PENNSYLVANIA

SKY-VIEW on ROUTE 322

WINK'S

RUGS

FURS

Our Automatic Filter Assures You Of Cleaner, Brighter Clothes Everytime

For Proof Bring Your Clothes To

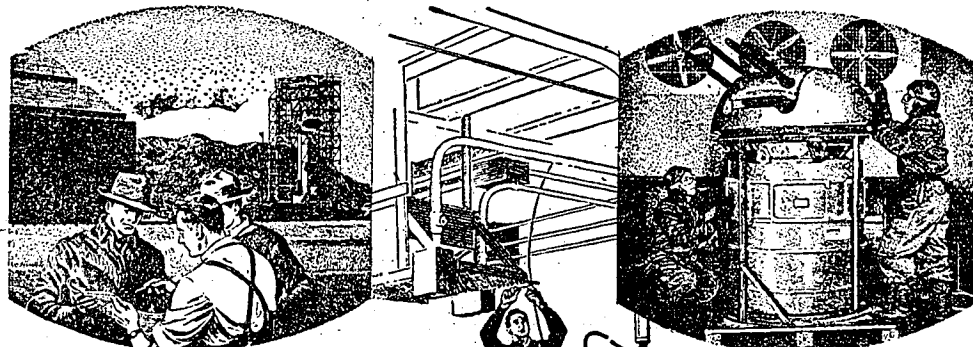
PORTAGE CLEANERS

New Location—118 South Pugh Street (In Calder Alley)

Phone 2632 For Pickup and Delivery Service

DRAPES

SHIRTS



GUIDED MISSILES—G-E engineers are aiding the Army's development program.

AIRCRAFT ARMAMENT—Gunnery systems are among G.E. developments for the Air Force.

JET ENGINES—In 1941, the Air Force asked General Electric to build the first U.S. jet engines. Today G-E jet engines power such fast planes as the F-86 Sabre.

College graduates at General Electric are working on some of the nation's most vital projects

The rocket that rises above White Sands, N. M., contains a device that reads 28 instruments every thirty-fifth of a second and transmits its reports to earth. It was developed by G-E engineers...

Special communications systems for civil defense are being undertaken by G-E electronics engineers...

The newest class of Navy heavy cruisers gain their power from 30,000-horsepower propulsion turbines built by General Electric...

During 1951 more than 30 per cent of G-E production will comprise projects like these... the design and construction of equipment to help fill America's military needs.

The General Electric engineers, physicists, and other specialists sharing in these projects work with the assurance that their contributions are meaningful and important. Their talents and skills, further developed through G-E training courses, are standing the nation in good stead.

You can put your confidence in—

GENERAL ELECTRIC

Fashions That Point To Spring

Millinery

Flattering styles and colors to suit your own best taste.

\$3.98 to \$8.98

Gloves

A variety of styles in spring fabrics and desired lengths.

\$1.98 to \$3.50

Hand Bags

Selected specially to go with your new spring ensemble. Boxy, shoulder, and pouch styles.

\$2.98 to \$7.98

Smart Shop

123 S. Allen

