

IFC-Panhel Sing Plans Announced

Sing positions for fraternities and sororities which will participate in the Interfraternity council-Panhellenic sing were decided Thursday night at a meeting of fraternity and sorority representatives.

Lynn Levitt, co-chairman for the affair, reviewed the rules for the sing which will be held April 1-3. The first two nights will be eliminations. A winner will be chosen from the finalists the third night.

Miss Levitt announced one rule change. She said two fraternity winners will be chosen each night of eliminations. Previously, only one fraternity winner was chosen on elimination nights. Miss Levitt said this means four fraternities will be in the finals with the two sorority winners.

"Blue and White" and a fraternity or a sorority song are required for the sing, Miss Levitt

Clockeyed Power Tells Timely Lies

Don't pay too much attention to your electric alarm clock this morning.

Don't even depend very strongly on the faithful chimes of Old Main. In fact, if you've got any electric timing device, from a waffle baker to an observatory, better switch to steam for today, anyway.

College electricians discovered yesterday that all these machines had snapped their volts and were telling all kinds of lies about the time of day. It seems the College's cable to regulating devices at West End Power company had decided to lie down and not really die, but be deathly sick.

So the College went merrily off on a time system of its own, said James Wharton is also co-chairman for the affair. Gordon Harrington and Jerome Gibson are working with Wharton.

Marketing Club

The Penn State Marketing club will sponsor a program on WMAJ Monday at 7:30 p.m.

The program is entitled "How Business Prospects and War Mobilization May Affect Job Opportunities For College Graduates."

Students producing the program are: Cyril Farrelly, Robert Lansberry, Gerald McCormick, John Pacuska, and William Polito.

Edwerth Korte, Luther Harshbarger, and Robert Eaus will lead the Freshman Roundtable of the Penn State Christian association at 7 p.m. Monday.

Practical religion in college life and current problems will be discussed.

completely unrelated to Greenwich, the international dateline, the naval observatory, or Bulova watch. The chronological spree is not yet over, although Physical plant officials hope to get the school back into the solar system today.

Homer Barr Moves Up

(Continued from page six)

undefeated 167-pounder in the EIWA this season, came up with his second pin of the day and dropped Cornell's Les Simon from further competition.

Swygart will meet Penn State's Joe Lemyre, who decisioned Columbia's Al Angelino. In the other 167-pound semi-final, Yale's George Graveson will meet Army's Dean Mulder. Mulder also pinned two men yesterday. His last victim was Syracuse's Murray Winer. It was the first time that Winer has been pinned this season.

In the 177-pound class, Army's undefeated Al Paulekas fought off a determined bid by Yale's Mac Reinhoff and pinned his man in 7.27. Cornell's Don Dickason will meet Paulekas today, and Penn State's Mike Rubino and Rutgers' Ray Vohden will meet in the other 177-pound match.

Dickason took a 6-1 decision from Marc Rowe of Brown, while

Rubino threw Navy's John Godek around for a shutout 5-0 decision. Vohden dumped Russ Schelling of F&M in a close 3-1 match.

Barr Pins Chernak

Two good battles are in prospect in the heavyweight division this afternoon. The four top-seeded heavies, Penn State captain Homer Barr, Lehigh's Don Berndt, Princeton's Bard Glass, and Cornell's Dick Clark all came up with victories and will meet this afternoon. Barr, who pinned John Chernak of Brown with seven seconds left in the match, will meet Berndt, who took a knock-down-drag-out 6-2 decision from Navy's rough and tumble Jim Hunt. Glass, the only undefeated heavyweight, with a record of 5-0-1, meets Clark. Glass pinned Gill Malone of Columbia in 2:57 and Clark pinned Art Merriman of Yale at 3:37. Glass and Clark both had two pins yesterday.

COME TO CHURCH



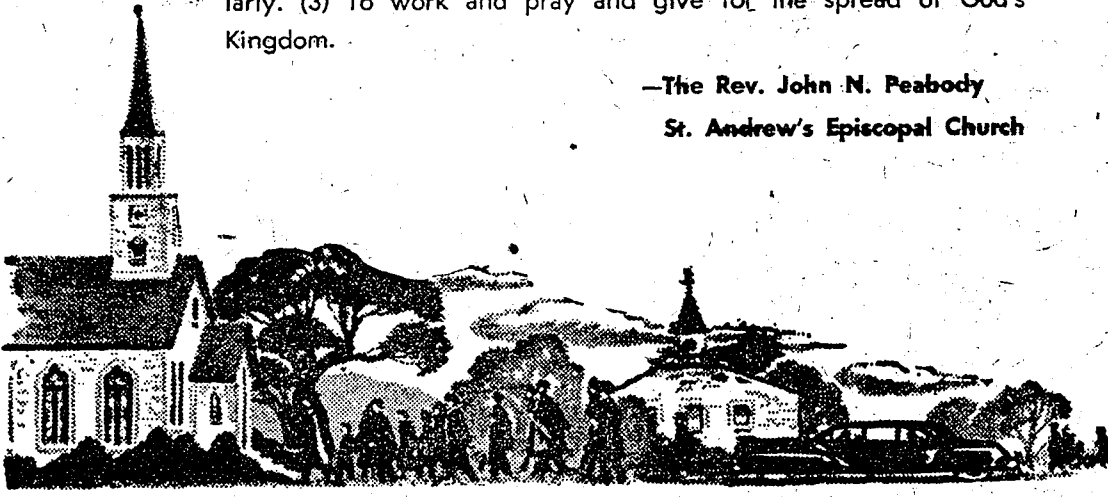
**College Chapel
Schwab Auditorium**
March 11, 1951—11 a.m.
Address by The Honorable Basil O'Connor, member of the board of directors of the National Conference of Christians and Jews, president of the National Foundation for Infantile Paralysis.
Choir: "Lacrymosa" from Requiem Mass—Mozart

**St. John's Evangelical
United Brethren Church**
Beaver Ave. and Burrowes St.
The Rev. James P. Reed, Pastor
Morning Worship and Sunday School 9:30 a.m.
Student Fellowship Meeting 6:15 p.m.
Vespers 7:30 p.m.

**University Baptist
Church**
Nittany Ave. and Burrowes St.
The Rev. Robert H. Eads, Pastor
Church School College Class 9:40 a.m.
Morning Worship 10:45 a.m.
Roger Williams Fellowship Student Service 5 to 7:30 p.m.

Free Methodist Church
Sparks Street
W. College and West Beaver Ave.
Sunday School 9:45 a.m.
Sunday Service 10:45 a.m.
Young People's Service 7:00 p.m.
Sunday Evening Service 7:30 p.m.
Prayer Meeting, Wed. 7:30 p.m.

- Allencrest
- Alpha Tau Omega
- Beaver House
- Beta Sigma Rho
- Chi Phi
- Chi Omega
- Collegian
- Delta Chi
- Delta Upsilon
- Gamma Phi Beta
- Jack Harper
- Kappa Alpha Theta



What sort of discipline do you set for yourself? Here is a good Rule of Life to follow: (1) To worship God every Sunday in his church. (2) To read the Bible or other devotional literature regularly. (3) To work and pray and give for the spread of God's Kingdom.

—The Rev. John N. Peabody
St. Andrew's Episcopal Church

**St. Andrew's Episcopal
Church**
Foster Ave. and Frazier St.
The Rev. John N. Peabody, Rector
Holy Communion every Sunday 7:45 a.m. Also First Sunday, 10:45 a.m.
Sunday Church School 10:45 a.m.
Morning Prayer and Sermon 10:45 a.m.
Evening Service 5:00 p.m.
College Student Meeting 6:30 p.m.

Grace Lutheran Church
College Ave. and Atherton St.
The Rev. John F. Harkins, D.D., Pastor
and
The Rev. Edwerth E. Korte, Campus Pastor
Church School 9:30 a.m.
The Service 10:45 a.m.
Lutheran Student Meeting 6:30 p.m.
Vespers 7:30 p.m.

Roman Catholic
Fairmount Ave. and Frazier St.
The Rev. John C. O'Leary Rector
and
The Rev. Richard Walsh
Sunday during regular College Session 8:00, 9:00, 10:00 and 11:00 a.m.—10:30 Mass at Nittany Theatre
Holy Days — 6:30, 7:00, 8:00 a.m.

**First Church of Christ
Scientist**
108 West Beaver Ave.
Sunday School 9:30 a.m.
Sunday Service 11:00 a.m.
Testimonial meeting
Wednesday 7:30 p.m.

**B'nai B'rith
Mifal Foundation**
133 West Beaver Ave.
Rabbi Benjamin M. Kahn, Director
Friday Evening Services 8:00 p.m.
Saturday Morning Services 10:00 a.m.

**The Presbyterian Church
and
Westminster Foundation**
Beaver and Frazier St.
Rev. Andrew E. Newcomer, Jr. Pastor
and
The Rev. Donald W. Carruthers, Director
College Sunday School 9:30 a.m.
Morning Church Service 10:45 a.m.
Westminster Fellowship 6:30 p.m.
Evening Church Service 7:30 p.m.

**Faith Evangelical and
Reformed Church**
College Ave. & Miles St.
The Rev. Albert Asendorf and
The Rev. Richard Goodling
Sunday School 9:30 a.m.
Sunday Service 10:45 a.m.
Student Fellowship 6:30 p.m.

**St. Paul's Methodist
Church
and
Wesley Foundation**
College Ave. and McAllister
The Rev. Frank W. Montgomery, Pastor
Mrs. Dorothy G. Anderson Program Director
Student classes 9:30 a.m.
Morning Worship 10:45 a.m.
Fellowship Supper and Program 5:30-7:30 p.m.

Friends Meeting
318 Atherton St.
School for Youth and Adults and Student Discussion 9:30 a.m.
Meeting for Worship, 10:45 a.m.
Student Meeting 7:00 p.m.

Church of Christ
Woodman Hall
O. L. Castieberry, Minister
Bible Class 10:00 a.m.
Worship 11:00 a.m.

- Kappa Sigma
- Kayes Korner
- Keeler's
- Lambda Chi Alpha
- Margaret Shop
- Music Room
- Phi Kappa
- Pi Lambda Phi
- Rea & Derick's
- Sears & Roebuck
- Sigma Alpha Epsilon
- Sigma Chi
- Zeta Tau Alpha

This Message is Brought To You Through the Courtesy of Both College and Town Organizations