

Gamma Phi Beta Wins WRA IM Championship

By MILDRED MARTIN

Gamma Phi Beta sorority captured the Women's Recreation association intramural basketball championship last night by defeating Kappa Kappa Gamma, 30-14, in White hall gym.

Lead Throughout

The Gamma Phi girls led the Kappas through the whole game. A slow first half ended with a score of 11-7. The Gamma Phi's increased their lead during the third period which ended 15-9. In the last quarter the Kappa's shot wildly and missed basket after basket, while the Gamma Phi's controlled the backboard and made 15 points to the Kappa's 5.

Playing on the winning team were Grace Black, Robin Brunner, Jean Garretson, Barbara Sprenkle, Willie Williams, and Pat Wolf. High scorers for the winners were Pat Wolf with 16 points and Jean Garretson, captain, with 14 points. Pete Caraway was high scorer for the losers with six points. Miss Ruth McFeeter and Miss Anne Jesnak, physical education instructors, officiated.

Runner-Ups

Members of the runner-up team were Pete Caraway, Ann Chapman, Sandy Hackett, Barbara Holzka, Lois Kenyon, Peg Mayberry, Flossie Tietz, Ella Williams, and Meredith Williamson.

Gamma Phi Beta defeated Zeta Tau Alpha, 33-21, and Kappa Kappa Gamma won over Atherton West, 17-12, Wednesday night in the semi-final game.

The basketball playoffs began Monday night when Atherton West defeated Atherton East, and Phi Mu defeated Alpha Epsilon Phi. Tuesday night Leonides lost to Atherton West, 28-21. Kappa Kappa Gamma defeated Kappa Alpha Theta, 27-25, and Kappa Phi Beta won over Zeta Tau Alpha, 22-20.

Beta Sigma Rho

Newly-elected officers of Beta Sigma Rho are: Joel Kranich, chancellor; Murray Goldman, vice-chancellor; Edwin Lefkowitz, warden; Bernard Cooper, vice-warden; Melvin Kates, recorder, and Barre Kaufman, corresponding secretary.

TYPING? FOR fast service and low rates on term papers, theses, etc. Just call 6324 330-B-Windercrest.

STUDENTS FROM Warren, Penna. intending to return by chartered bus for Christmas may make their reservation by signing up and paying \$3 at the Student Union desk. Reservations will be on a first come basis.

ROOM AND BOARD

CHEERFUL ROOM for two students. Double bunk beds. College Heights. Phone 4223.

FOR RENT

26 FOOT TRAILER. Immediate occupancy. Room attached. Call 6595 after 5 p.m. Ask for Howe or Webster.

DESIRABLE DOUBLE room available for male students. Three blocks back of campus on North Allen. Call 2079.

FOR SALE

CHRISTMAS GIFT Ideal Penn State engagement calendar with 55 campus scenes, \$1.00 each. Published by Alumni Association. Purchase at Alumni Office, 104 Old Main; Student Union.

UNLUCKY IN LOVE. Beautiful \$225 diamond ring 2 months old. Will sacrifice for \$100. Call 4232. Ask for Tom.

1936 CHEV. Good running condition. Radio and heater. Bargain. Call 6789 after six. Ask for Dean.

K&G LOG LOG trig duplex slide rule \$10. Lew Goelin 124 Thompson Hall.

THE LARGEST selection of Christmas cards in Centre County from 5c up at G. C. Murphy's Five and Dime.

WANTED

PEOPLE TO shoot and take home turkeys. Come to live turkey shoot held at Penn State Trailer Sales, near Woodycrest. Saturday, Dec. 16 at 1 p.m.

YOUNG MALE instructor or graduate student to share modern 3-room apartment. Monthly expenses under \$35.00. Write P.O. Box 213.

RIDERS TO Minnesota or vicinity leaving Dec. 18th or 19th. Call Don Flom 4309 after 5.

RIDERS TO Atlanta, Ga. leaving Dec. 20. Call Bensch at 2335 noon or after 5.

SMALL APARTMENT or large double room for occupancy Feb. 1. Phone Collegian editor 8441 Ext. 543, after 4 p.m.

TWO RIDES to Greensburg or vicinity Tuesday Dec. 19. Call 5051-298 Dorrn 38. Pete Thomas.

RIDE TO Florida leaving Dec. 18 or 19. Call Fazio 2079.

LOST

BROWN PLASTIC wallet lost Dec. 2 at Rec Hall. Please return to James Erb. Phone 2602. Reward.

MAN'S BROWN Wallet containing valuable papers. Reward. Call State College 6384 after 6 p.m.

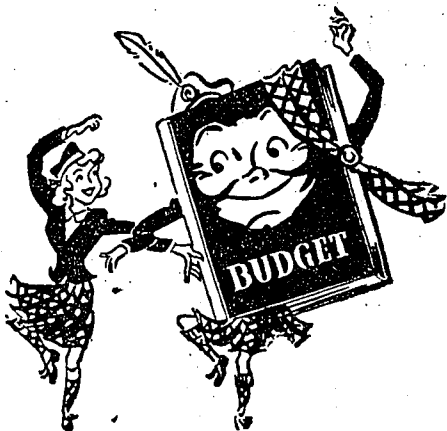
CLASSIFIEDS

MISCELLANEOUS

IF YOUR typewriter needs repairs just call 2492 or bring machine to 633 W College Ave. Mr. Beatties 25 years experience is at your service.

MEALS FOR students in vicinity of 622 S. Allen St. Mrs. E. Miley.

TYPEWRITER REPAIRING. All work guaranteed. Will call for and deliver. Phone Paul E. Henninger, State College 7532.



Budget Yourself at Every R & D Counter

Every R & D counter has top-notch values at budget prices! You'll find this so from the first to the last counter.

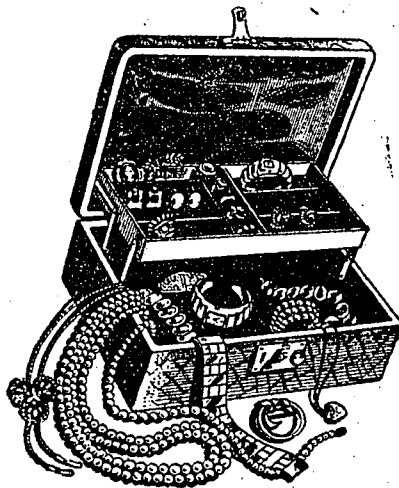
Your budget headquarters for

- CIGARETTES
- CANDIES
- COSMETICS
- FOUNTAIN GOODS
- MEDICINES
- CARDS
- JEWELRY
- GIFTS OF ALL KINDS

REA & DERICK

"A Good College Drug Store In A Good College Town"

GIFT JEWELRY



for coeds who appreciate the glamorous touch

PRESENT Problems?

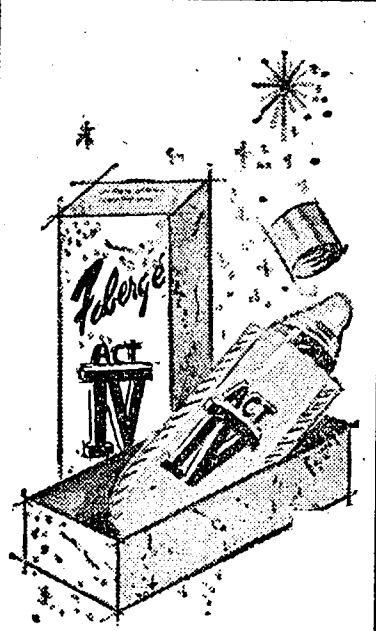
Let us suggest costume jewelry . . . so small in size, but so BIG in thanks.

Your choice of lustrous pearl or rhinestone necklaces, earrings, and bracelets. Or the new Hieratic necklaces with removable pendant that doubles as pin.

Stop in today.

MARY LEITZINGER

136 E. COLLEGE AVENUE
Store Hrs. 9 to 9 Mon., Wed., Fri.



After the show is over . . . it's time for Act IV Fabergé's new, new perfume, the gayest gift of all! The jewel-like FABERGÉTTE "Touch Control" applicator, filled with Act IV perfume in gold-engraved white leather purse pouch, gift boxed, 2.50

also in Aphrodisia, Woodhues, Tigress, Straw Hat.

McLanahan's

YES - For Your Convenience OPEN UNTIL 9:00 p.m. . . . From now until Xmas we're open every day to serve you!

We carry a complete line of Holiday Material for interior and exterior decorating . . . including Christmas Bells, Artificial Christmas Trees, Tree Ornaments, Christmas Tree Lights, Mazda Lamps in Christmas Colors, Artificial Snow, Crepe Paper and Streamers, Icicles and many other items.

We will consider it a pleasure to assist you in making your selection.

Don't forget our line of toys for your Kiddy Parties, also your own Christmas Party and dances.

At G. C. MURPHY'S
State College Pa. Phone 4016

:: Important Places To Know ::

1. LIBRARY . . . Upper Part of Mall
2. COLLEGIAN OFFICE . . . Basement Carnegie Hall

The News-Stand To Know Is

Nittany News
110 W. COLLEGE
Stop Here for All
Magazines - Candy - Newspapers - Tobacco

The Furniture Store To Know Is

PEOPLE'S
This Christmas give your Sweetheart a Portable Radio
For your best Gal or Mom an Automatic Toaster.
Come in Today and See Our Large Selection
320 E. College

The Shoe Store To Know Is

GLICK'S

SLIPPERS
MAKE THE PRETTIEST GIFTS
Make your family extra happy this Christmas . . . Give slippers from our colorful display. Priced \$1.99 up.
SOUTH ALLEN STREET

The Packard To Know Is

The 1951
Now On Display

SERVICE DEPENDABILITY

CLARK MOTOR CO.

120 S. Pugh Street, State College